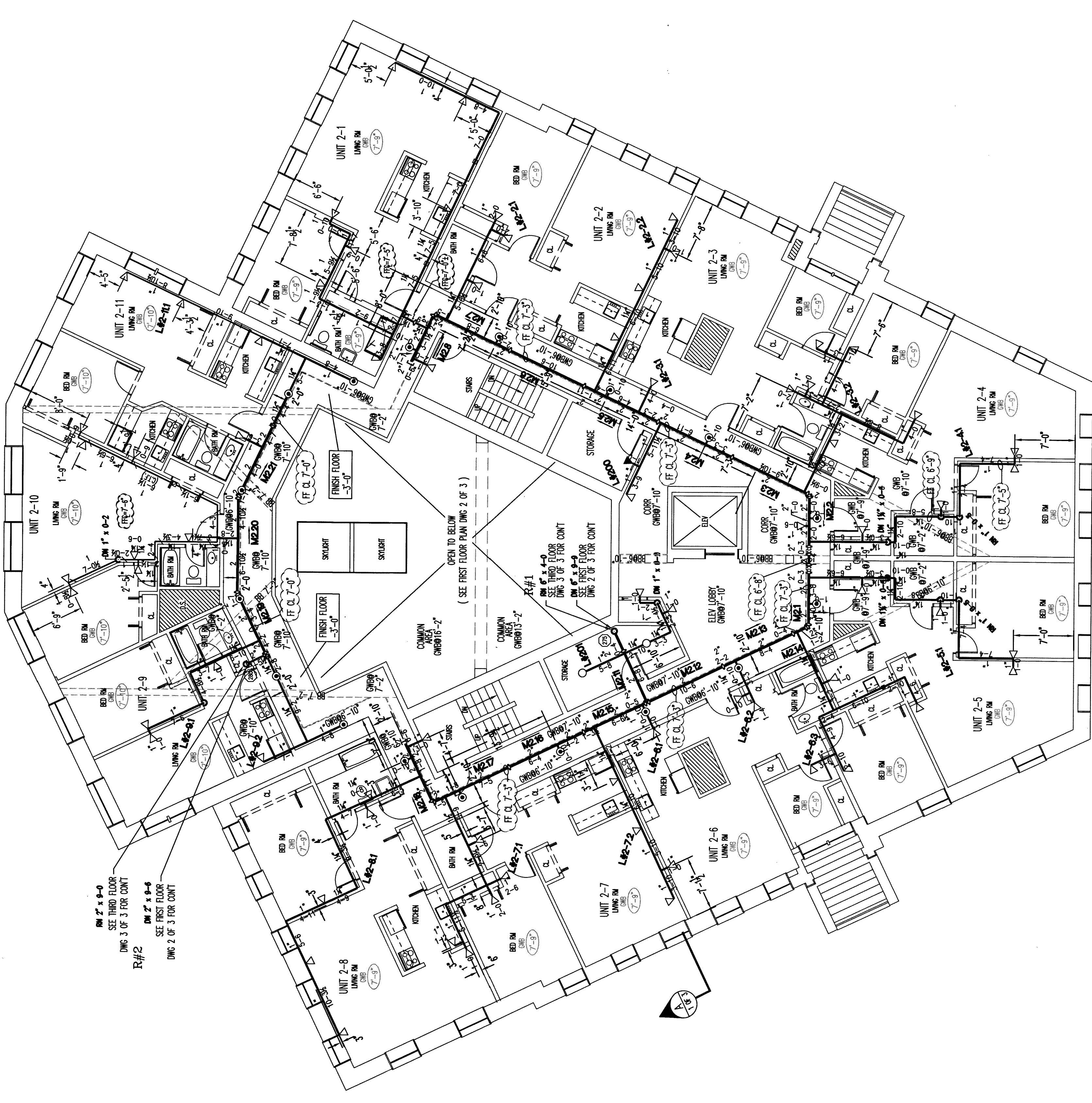
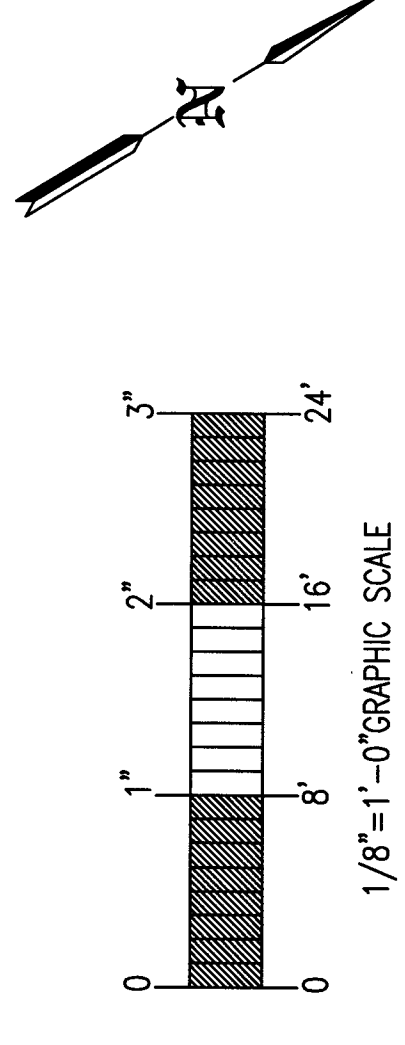


FIRE SPRINKLER PLAN - FIRST FLOOR
 SCALE: 1/8"=1'-0"
 AREA PROTECTED: 11,140 SQ. FT.
 FINISH FLOOR ELEVATION: 100.00'
 COLOR CODE: YELLOW

Symbol	Count	Thread	SIN#	K-FACTOR	TEMP	Description	Note
△	80	1/2"	R3531	4.4	155°	RELIABLE FIFR 44 WHITE HORIZ SIDEWALL	ON LINE
○	20	1/2"	R4016	4.9	165°	RELIABLE RFC 48 CONCEALED PENDENT	ON DROP
○	3	1/2"	R4145	5.6	200°	RELIABLE FIFR 56 BRASS UPRIGHT	ON LINE
◀	3	1/2"	R4143S	5.6	200°	RELIABLE FIFR 56 WHITE HORIZ SIDEWALL	ON LINE

108 = Total Number of Heads FIRST FLOOR



FIRE SPRINKLER PLAN - SECOND FLOOR
 SCALE: 1/8"=1'-0"
 AREA PROTECTED: 9,835 SQ. FT.
 FINISH FLOOR ELEVATION: 109.75'
 COLOR CODE: YELLOW

Symbol	Count	Thread	SIN#	K-FACTOR	TEMP	Description	Note
△	72	1/2"	R3531	4.4	155°	RELIABLE FIFR 44 WHITE HORIZ SIDEWALL	ON LINE
○	17	1/2"	R4016	4.9	165°	RELIABLE RFC 48 CONCEALED PENDENT	ON DROP
○	2	1/2"	R4145	5.6	200°	RELIABLE FIFR 56 BRASS UPRIGHT	ON LINE
◀	1	1/2"	R4143S	5.6	200°	RELIABLE FIFR 56 WHITE HORIZ SIDEWALL	ON LINE

92 = Total Number of Heads SECOND FLOOR

GENERAL NFPA #13R NOTES

SPRINKLER SYSTEM INSTALLATION TO COMPLY WITH NFPA PAMPHLET #13R 2013

1. SPRINKLERS ARE NOT REQUIRED IN THE FOLLOWING AREAS AS PER NFPA 13R 2007 EDITION

- A. BATHROOMS NOT EXCEEDING 55 SQ. FT.
- B. SMALL CLOSETS WITHIN THE DWELLING UNIT LESS THAN 24 SQ. FT. IN AREA WITH THE LEAST DIMENSION NOT EXCEEDING 30" SO. FT. IN AREA WITH THE LEAST DIMENSION NOT EXCEEDING 30" SO. FT.
- C. OPEN ATTACHED PORCHES, BALCONIES, CORRIDORS AND STAIRS
- D. CRAWL SPACES, ATTICS, PENHOUSE EQUIPMENT & ELEVATOR MACHINE ROOMS, FLOOR/CEILING SPACES AND ELEVATOR SHAFTS AND OTHER CONCEALED SPACES THAT ARE NOT INTENDED FOR LIVING PURPOSES AND DO NOT CONVEY FUEL-FIRED EQUIPMENT.
- E. CLOSETS ON EXTERIOR BALCONIES W/NO DIRECT ACCESS FROM THE DWELLING UNIT.

OWNER TO PROVIDE SUFFICIENT HEAT THROUGHOUT BUILDING TO PREVENT FREEZING OF WATER FILLED EXPOSED LINES BEING 1/2" TO BE BLACK SCHEDULE 40 JOINED BY THREADED BOULTE IRON FITTINGS

OWNER TO PROVIDE SUFFICIENT HEAT THROUGHOUT BUILDING TO PREVENT FREEZING OF WATER FILLED EXCEPT FOR UNHEATED, TYP. SPACES WHICH WILL BE PROTECTED BY NEW DRY PIPE SPRINKLER SYSTEM.

REQUIRED APPROVALS

OWNER / ARCHITECT
 STATE FIRE MARSHAL
 PORTLAND FIRE DEPARTMENT

REVISIONS

DATE	DESCRIPTION

DRAWN BY: CRD
 CHECKED BY: WJF
 INSET LEVEL III: CERT # 08574
 CONTRACTOR LICENSE # 101
 CONTRACTOR REG # 368

BUTLER SCHOOL APARTMENTS
 77 PINE STREET, PORTLAND, ME

CONTRACT WITH: **HEBERT CONSTRUCTION**

EASTERN FIRE PROTECTION
 AUBURN/LEWISTON INDUSTRIAL AIRPARK, AUBURN, MAINE 04210

FIRE SPRINKLER PLANS & DETAILS
 DWG. NO. 2 OF 3
 JOB NUMBER AU-5308-15
 SCALE AS NOTED
 DATE 06/30/15