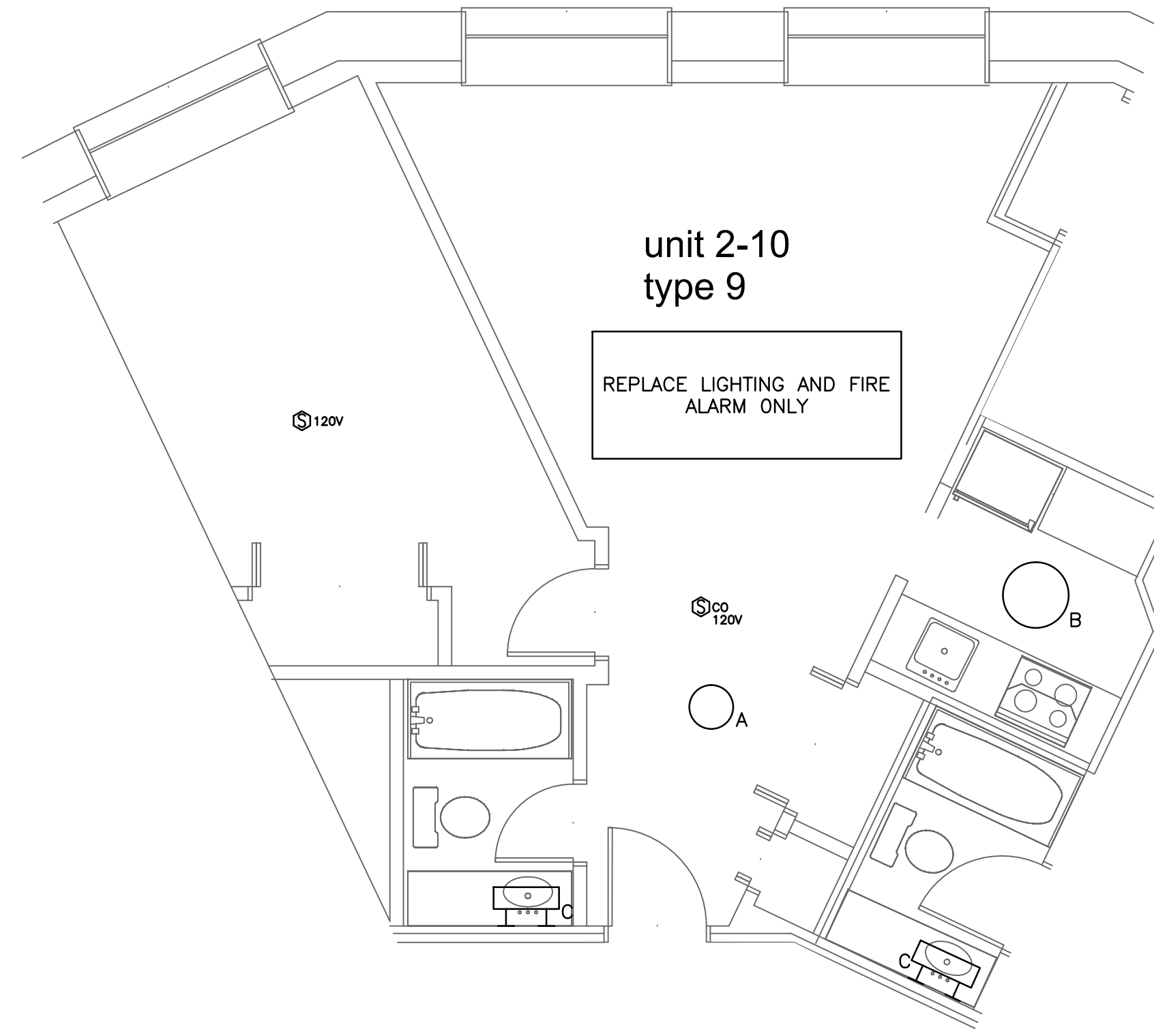
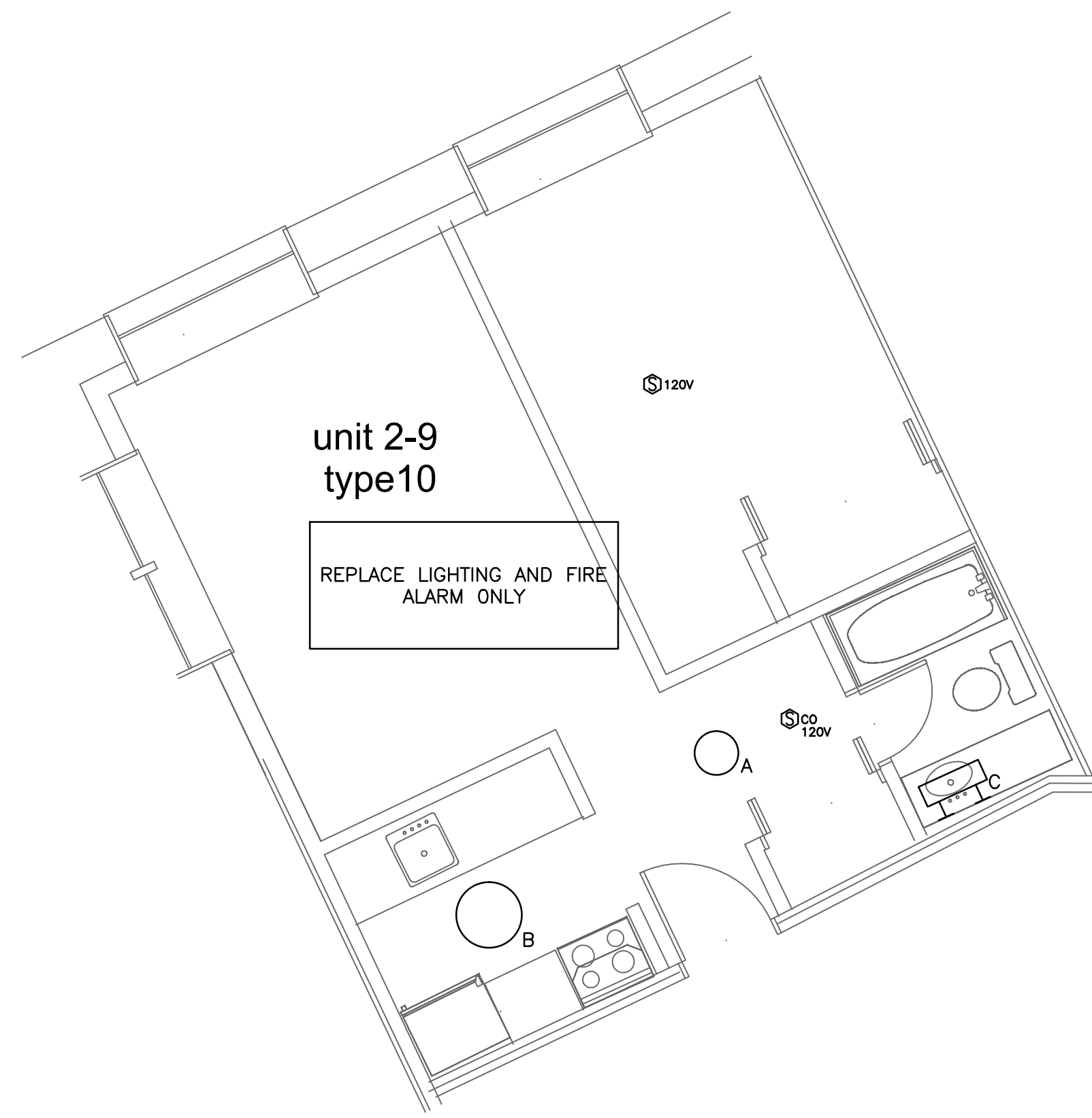


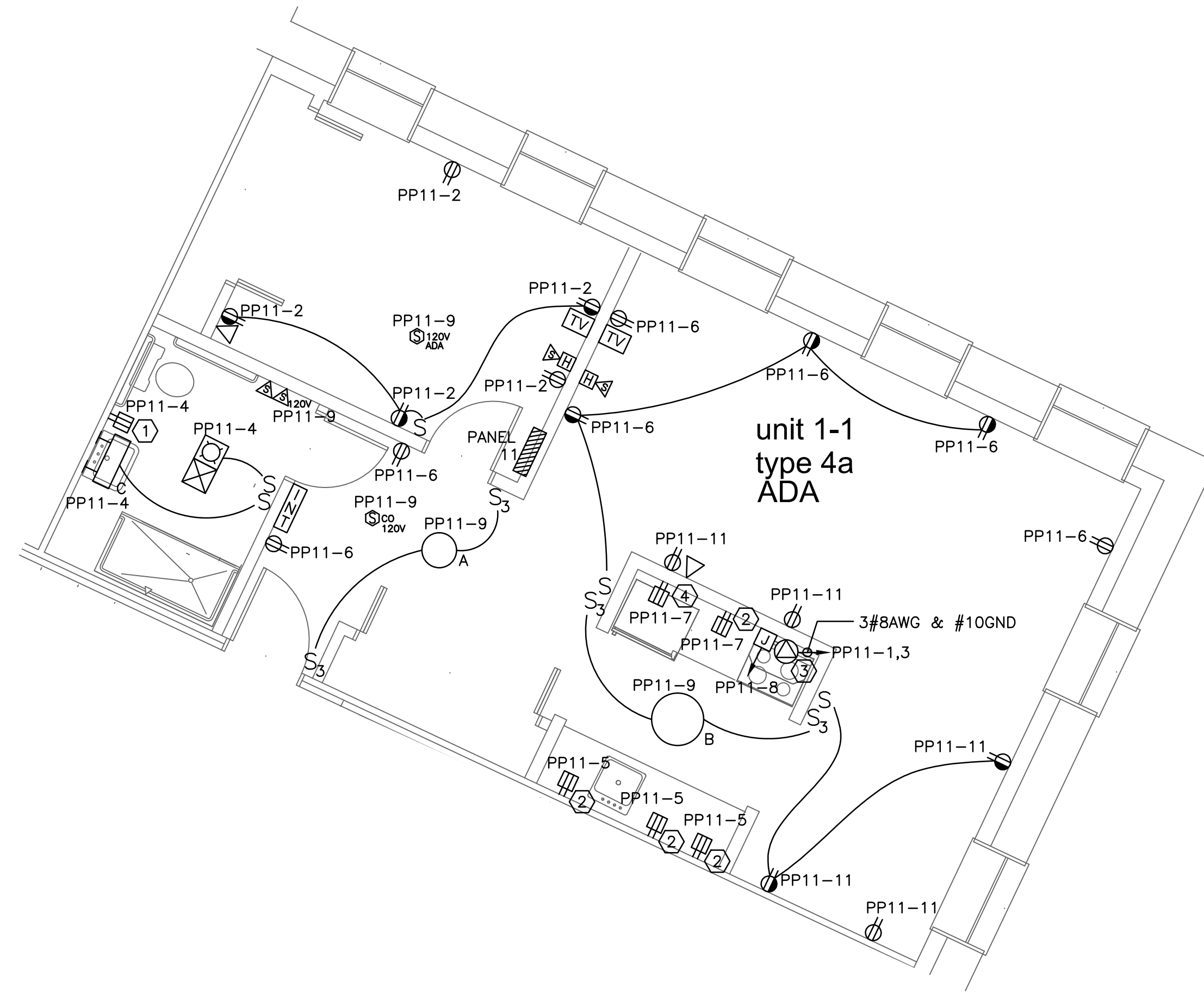
1 DETAIL - UNIT TYPE 8  
SCALE: 1/4"=1'



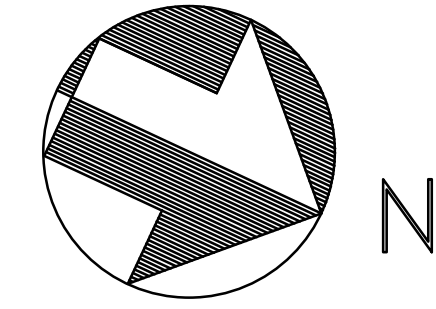
2 DETAIL - UNIT TYPE 9  
SCALE: 1/4"=1'



3 DETAIL - UNIT TYPE 10  
SCALE: 1/4"=1'



4 DETAIL - UNIT TYPE 4  
SCALE: 1/4"=1'



project name

**Butler Payson**  
pine st.  
state st.  
portland, me

NOTES:  
1. SEE E0.0 FOR LEGEND, ABBREVIATIONS AND GENERAL NOTES.

- KEYED NOTES:
- ① MOUNT 42" AFF
  - ② COUNTERTOP RECEPTACLE. MOUNT 6" ABOVE COUNTER COORDINATE WITH BACKSPASH.
  - ③ RANGE RECEPTACLE
  - ④ REFRIGERATOR(WIRE THROUGH COUNTERTOP GFI.
  - ⑤ RANGE HOOD. COORDINATE MOUNTING HEIGHT WITH APARTMENT ELEVATION PLAN.

**avesta housing**

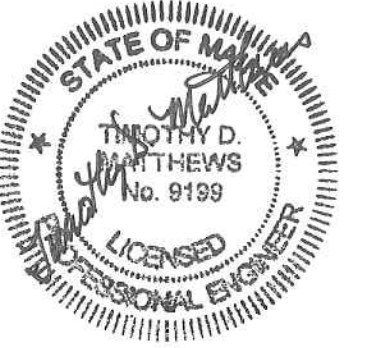
goduti/thomas architects

44 oak st.

portland, maine 04101

ph. 207-775-3184

fax 207-774-0486



**SWIFTCURRENT**  
Engineering Services  
10 Forest Falls Dr. Unit 4b  
Yarmouth, ME 04096  
Tel: (207) 847-9280

ISSUED FOR PERMIT

revisions

date  
Feb. 6, 2015

sheet title

INDIVIDUAL UNIT DETAILS

scale: as shown

drawn by:JMD checked by:TDM

project number

BE1.5