

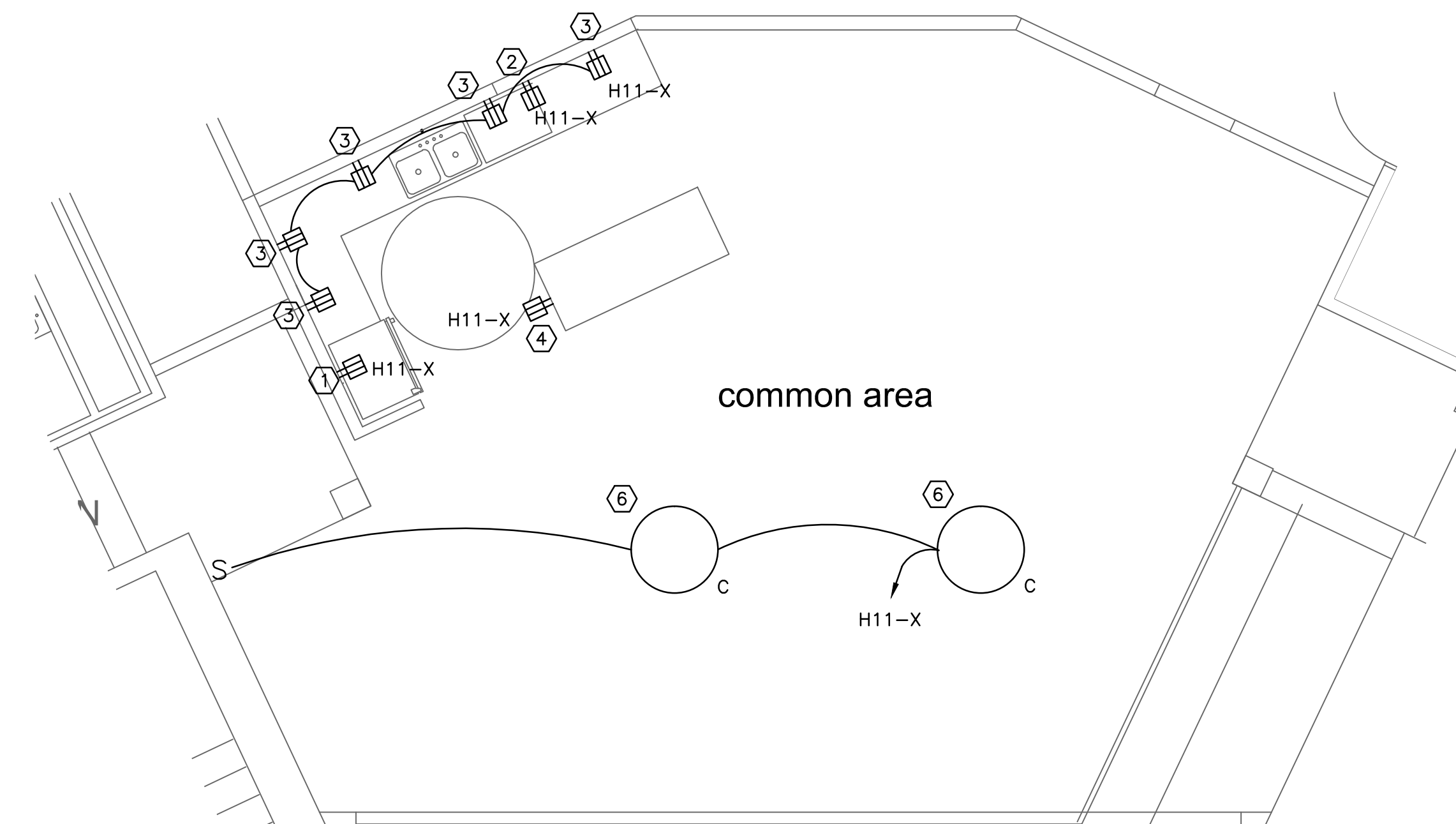
**1** ELECTRICAL POWER & SYSTEMS PLAN – FIRST FLOOR  
SCALE: 1/8"=1'

**NOTES:**

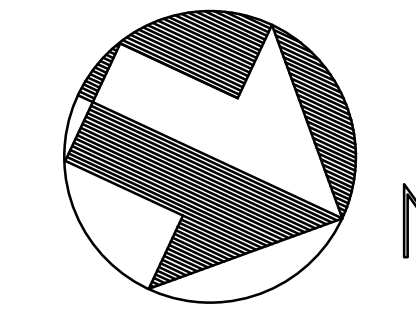
1. SEE E0.0 FOR LEGEND, ABBREVIATIONS AND GENERAL NOTES.
2. REPLACE EXISTING CORRIDOR LIGHTS IN PLACE WITH NEW FIXTURES. REWIRE TO EXISTING CIRCUITS AND CONTROLS.
3. WIRE KITCHEN RECEPTACLES TO PANEL H11. FURNISH ADDITIONAL RECEPTACLES AS REQUIRED.

**KEYED NOTES:**

- ① REFRIGERATOR
- ② DISHWASHER
- ③ COUNTERTOP RECEPTACLE. MOUNT 6" ABOVE COUNTER COORDINATE WITH BACKLASH.
- ④ ISLAND RECEPTACLE.
- ⑤ NEW LIGHT LOCATION WIRE TO CORRIDOR LIGHTING CIRCUIT.
- ⑥ NEW LIGHT WIRE TO NEW MENT FROM SPARE BREAKER IN PANEL H11



**2** ELECTRICAL DETAIL – COMMON AREA  
SCALE: 1/4"=1'



project name

**Butler Payson**  
pine st.  
state st.  
portland, me

**avesta housing**

goduti/thomas architects

44 oak st.

portland, maine 04101

ph. 207-775-3184

fax 207-774-0486



**SWIFTCURRENT**  
Engineering Services  
10 Forest Falls Dr. Unit 4b  
Yarmouth, ME 04096  
Tel: (207) 847-9280

ISSUED FOR PERMIT

revisions

date

Feb. 6, 2015

sheet title

ELECTRICAL FLOOR PLAN –  
FIRST FLOOR

scale: as shown

drawn by:JMD checked by:TDM

project number

BE1.1