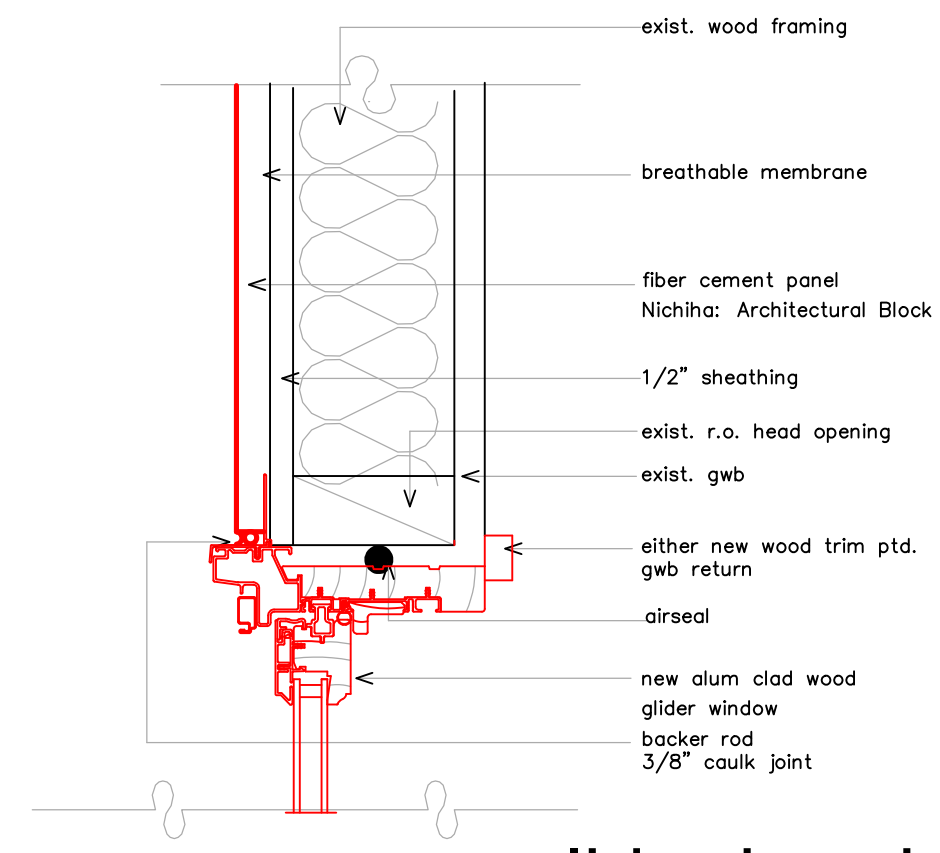
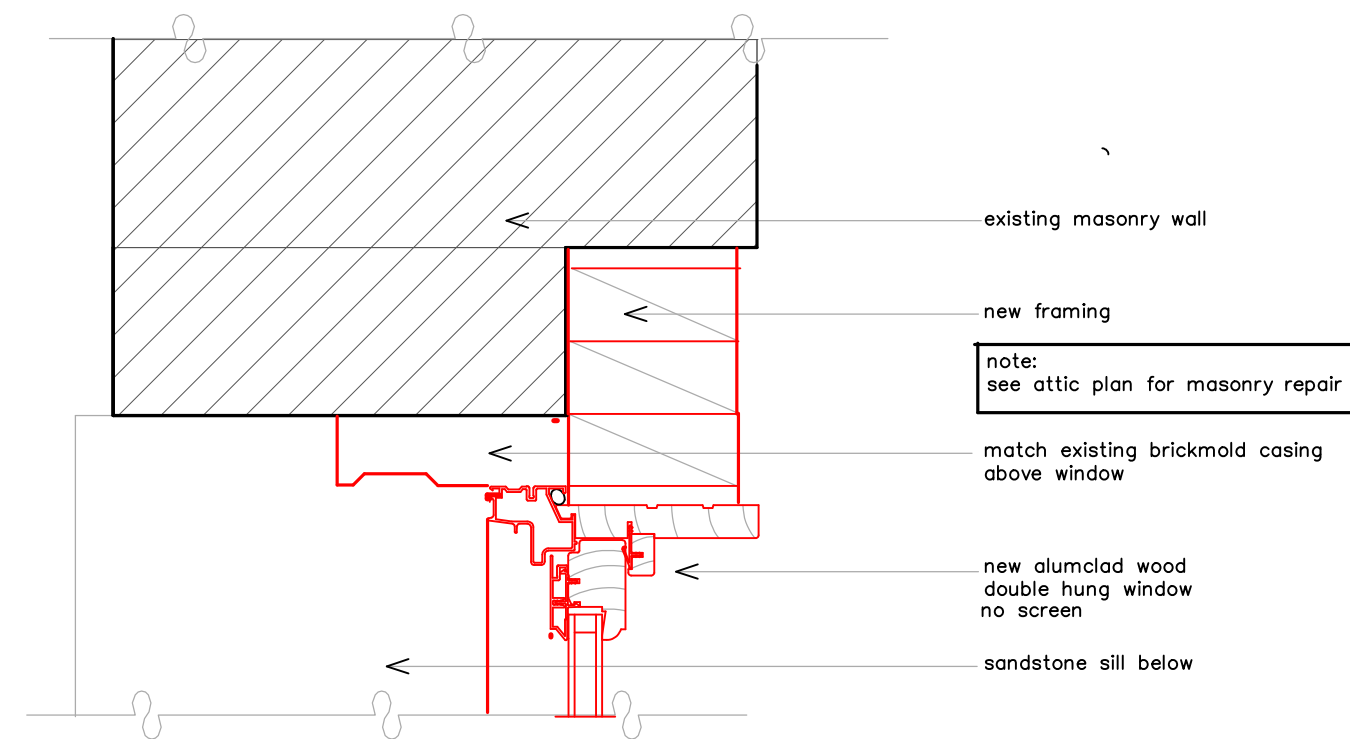


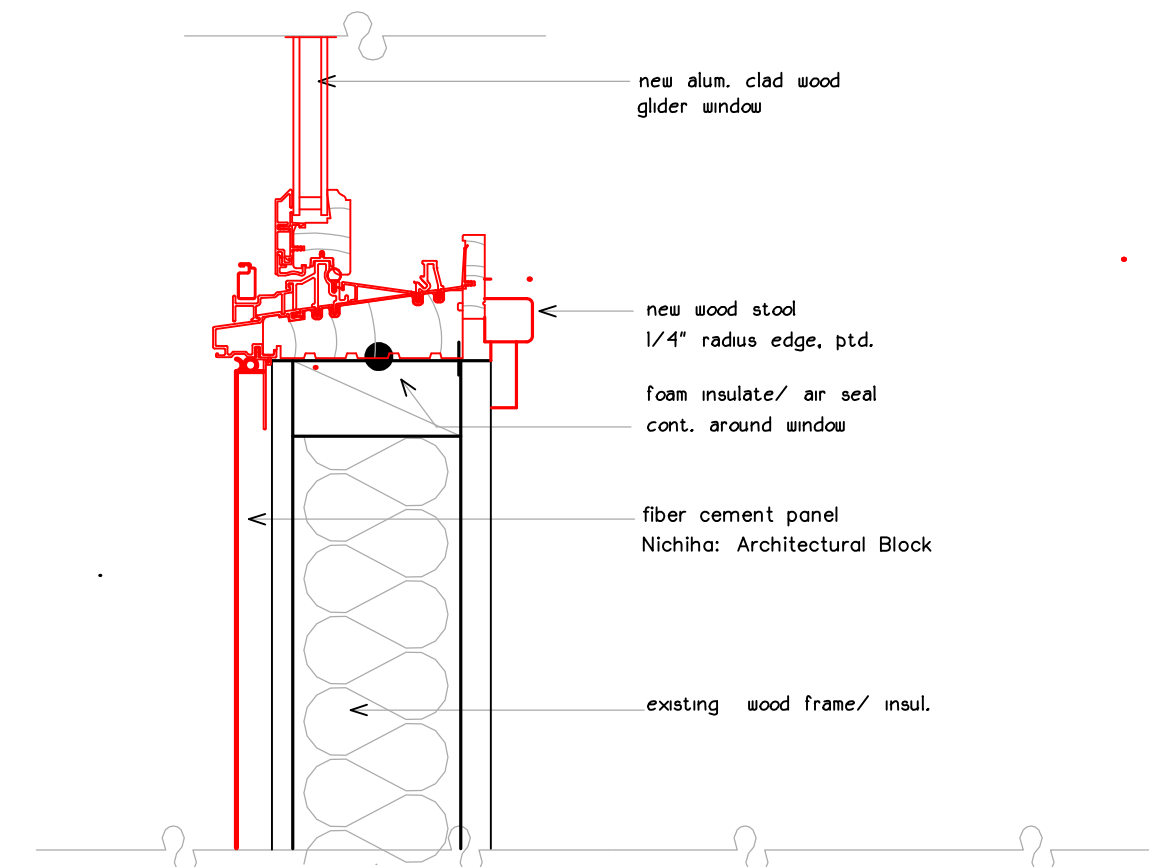
9 new window head @ attic window



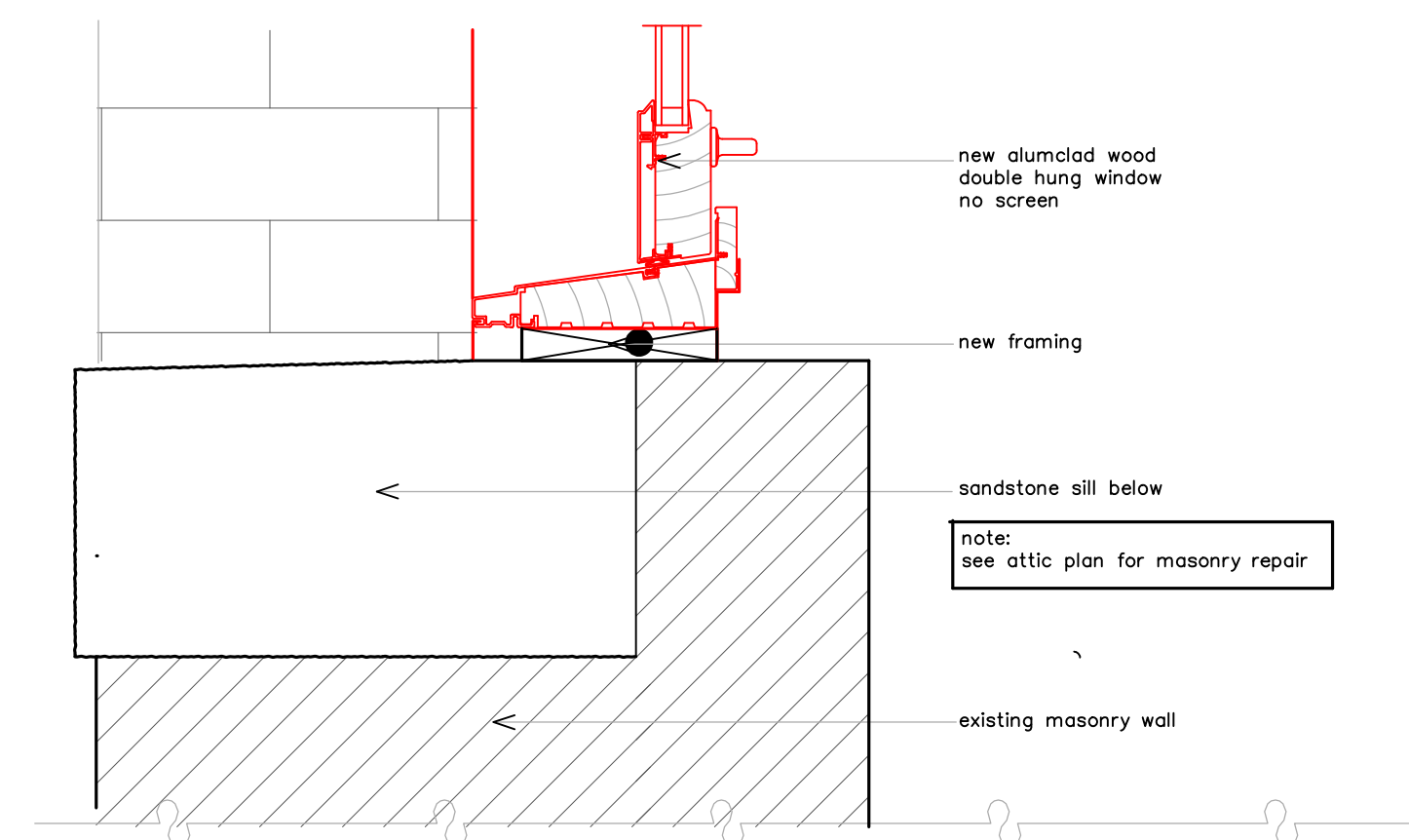
12 new glider head @ roof court similar at jamb



10 new jamb @ attic dormer window



13 new glider sill at roof court



11 new sill @ attic dormer window

project name

Butler Payson
pine st.
state st.
portland, maine

avesta housing

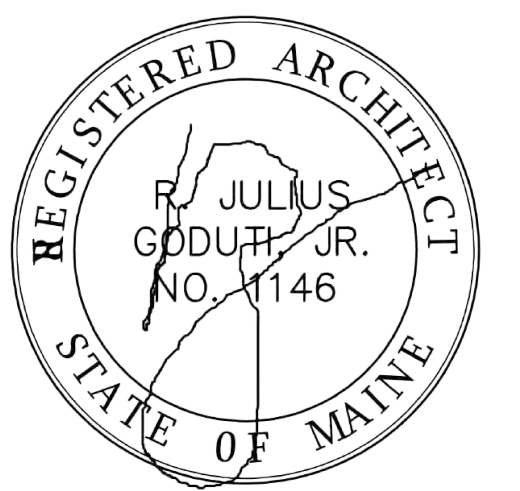
goduti/thomas architects

44 oak st.

portland, maine 04101

ph. 207-775-3184

fax 207-774-0846



revisions

date

january 17th, 2015

sheet title

butler
typical windows
section/ elevation

scale

1 1/2" = 1'-0" (80% enlargement)

drawn by

RG

project number

butler payson

sheet number

BA5.2