

project name

**Butler Payson**  
pine st.  
state st.  
portland, me.

**avesta housing**

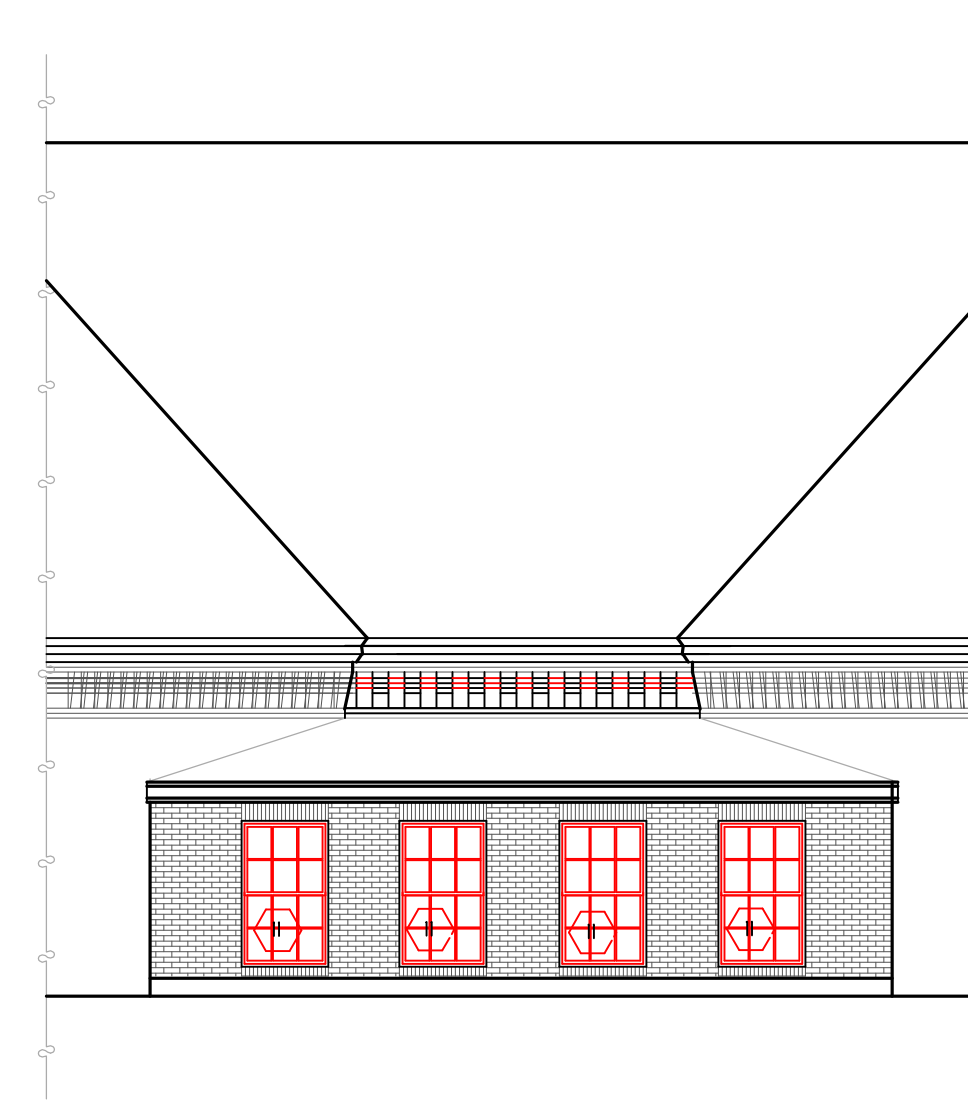
goduti/thomas architects

44 oak st.

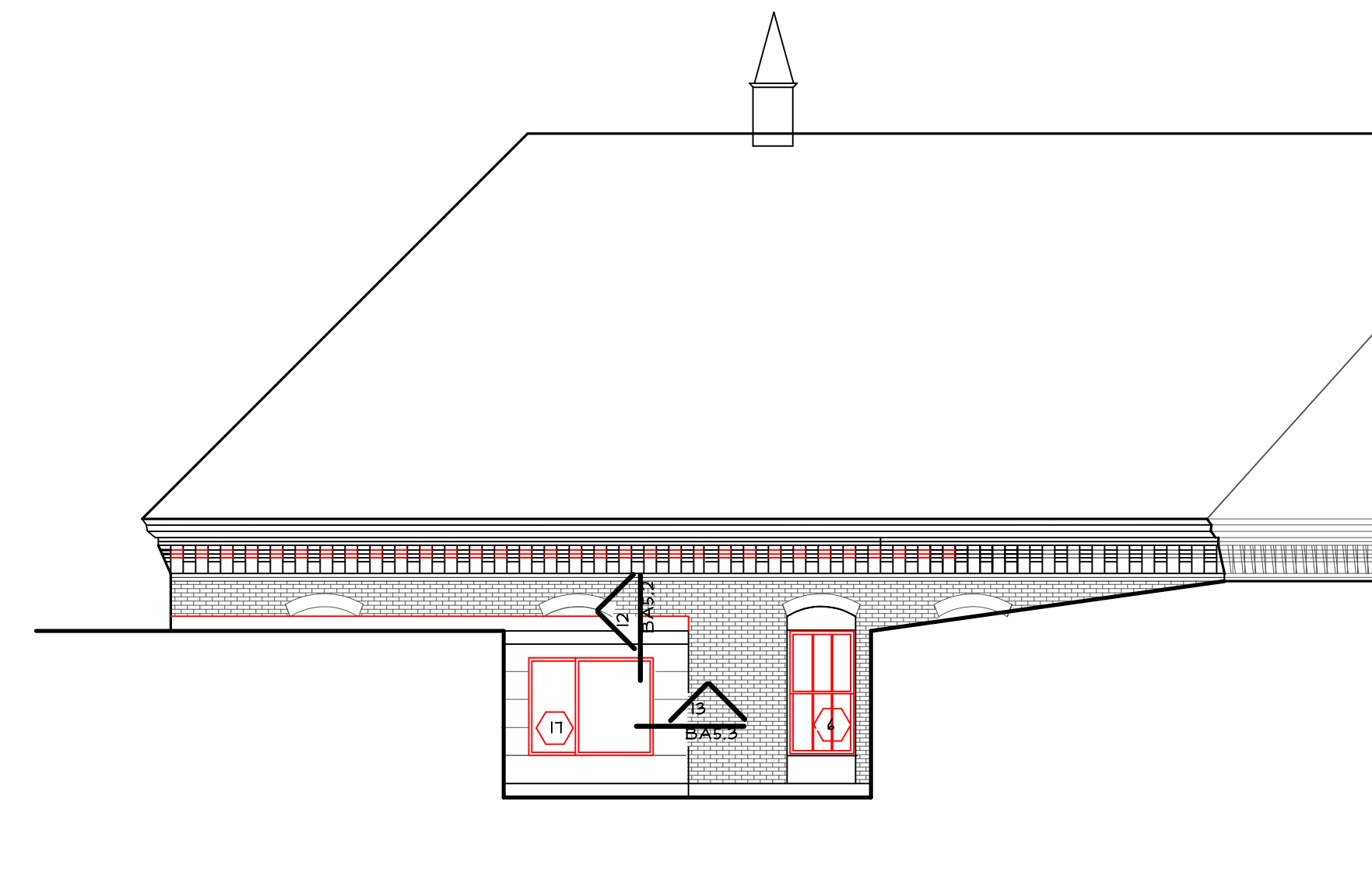
portland, maine 04101

ph. 207-775-3184

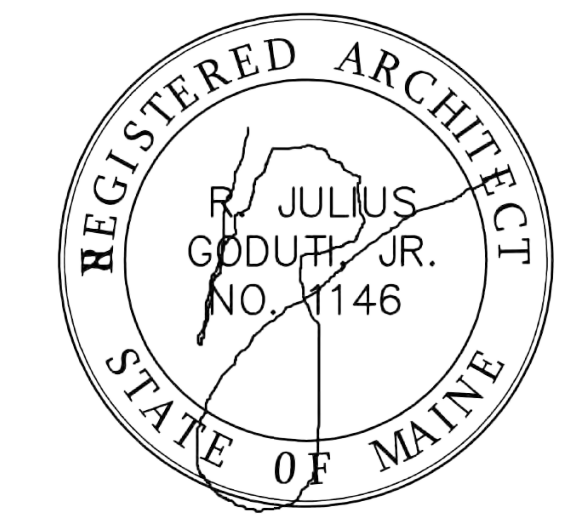
fax 207-774-0846



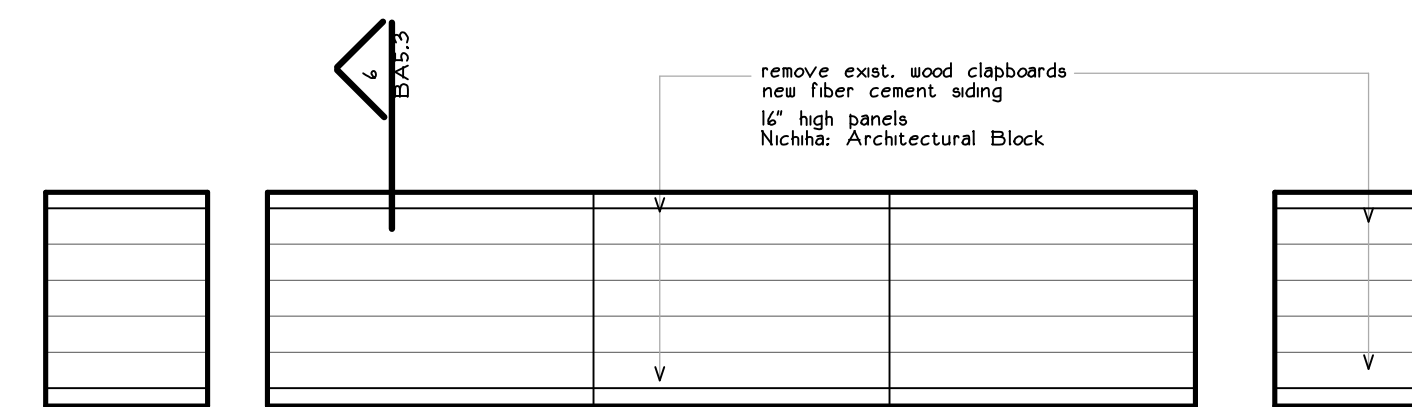
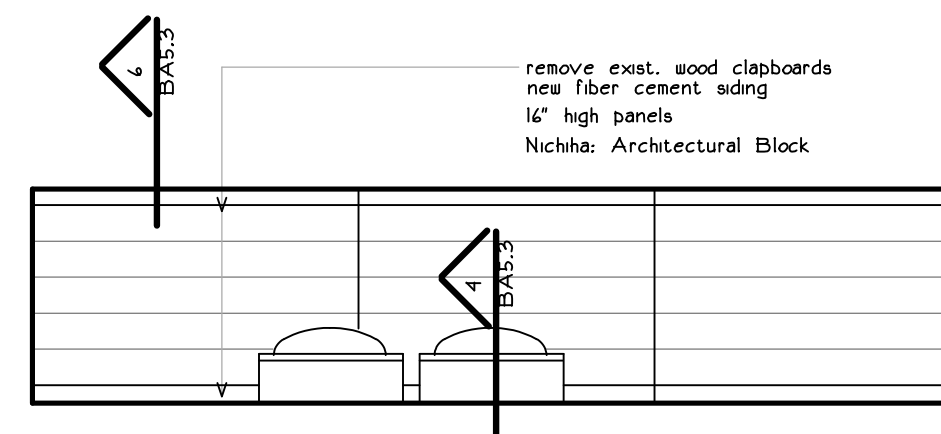
roof top elevation, office



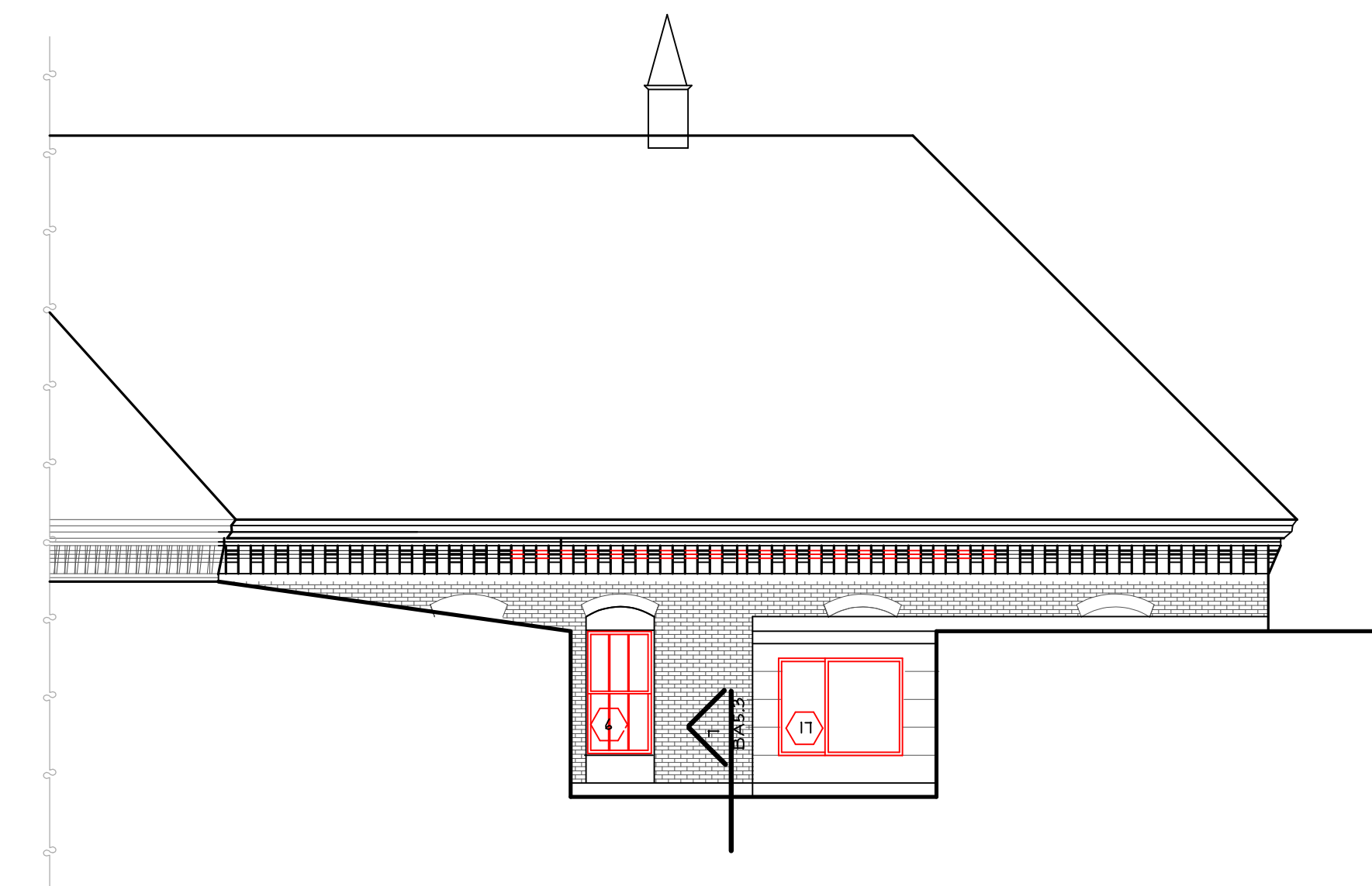
roof top elevation, west street wing



remove exist. wood clapboards  
new fiber cement siding  
16" high panels  
Nichols: Architectural Block



roof top elevation, infill addition



roof top elevation, pine street wing

revisions

date

january 17th, 2015

sheet title

**butler**  
**existing elevations**

scale

1/8"=1'-0"

drawn by

MS

project number

butpag

sheet number

**BA2.3**