

project name

Butler Payson
pine st.
state st.
portland, me

avesta housing

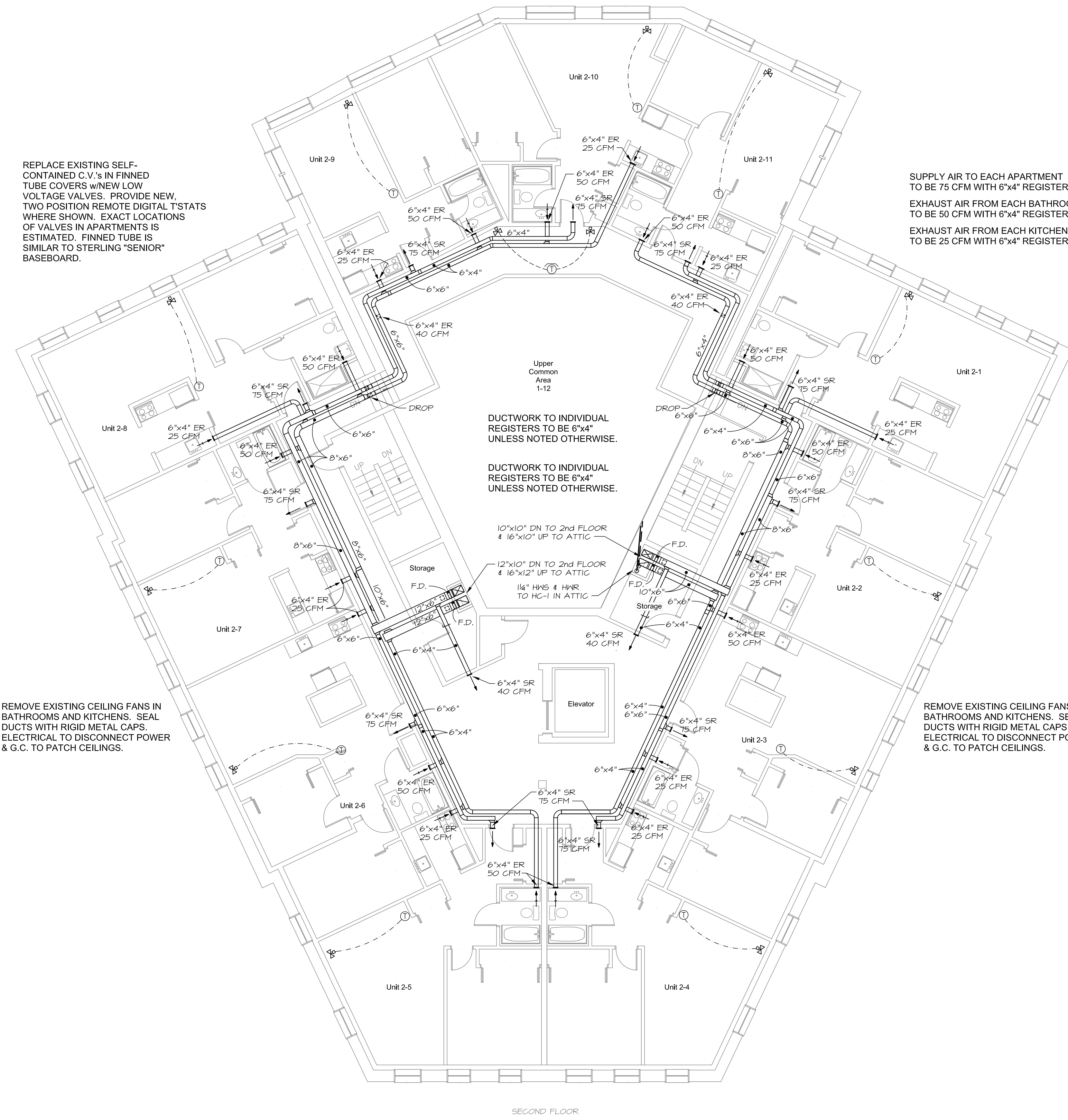
goduti/thomas architects

44 oak st.

portland, maine 04101

ph. 207-775-3184

fax 207-774-0486



REPLACE EXISTING SELF-CONTAINED C.V.'s IN FINNED TUBE COVERS w/NEW LOW VOLTAGE VALVES. PROVIDE NEW, TWO POSITION REMOTE DIGITAL T'STATS WHERE SHOWN. EXACT LOCATIONS OF VALVES IN APARTMENTS IS ESTIMATED. FINNED TUBE IS SIMILAR TO STERLING "SENIOR" BASEBOARD.

SUPPLY AIR TO EACH APARTMENT TO BE 75 CFM WITH 6"x4" REGISTERS.
EXHAUST AIR FROM EACH BATHROOM TO BE 50 CFM WITH 6"x4" REGISTERS.
EXHAUST AIR FROM EACH KITCHEN TO BE 25 CFM WITH 6"x4" REGISTERS.

REMOVE EXISTING CEILING FANS IN BATHROOMS AND KITCHENS. SEAL DUCTS WITH RIGID METAL CAPS. ELECTRICAL TO DISCONNECT POWER & G.C. TO PATCH CEILINGS.

REMOVE EXISTING CEILING FANS IN BATHROOMS AND KITCHENS. SEAL DUCTS WITH RIGID METAL CAPS. ELECTRICAL TO DISCONNECT POWER & G.C. TO PATCH CEILINGS.

PERMIT SET

revisions

date
January 17, 2015

sheet title

butler
level 2
mechanical plan

scale

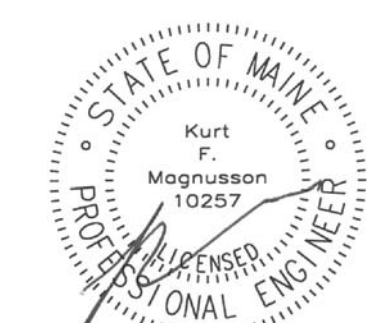
1/8" = 1'-0"

drawn by

R.E.M.

project number

butpay



MECHANICAL SYSTEMS ENGINEERS
ROYAL RIVER CENTER, UNIT 108
10 FOREST FALLS DRIVE, YARMOUTH, MAINE 04096
(207) 846-1441
FACEBOOK: MECHANICAL SYSTEMS ENGINEERS
© COPYRIGHT 2015



BM3

