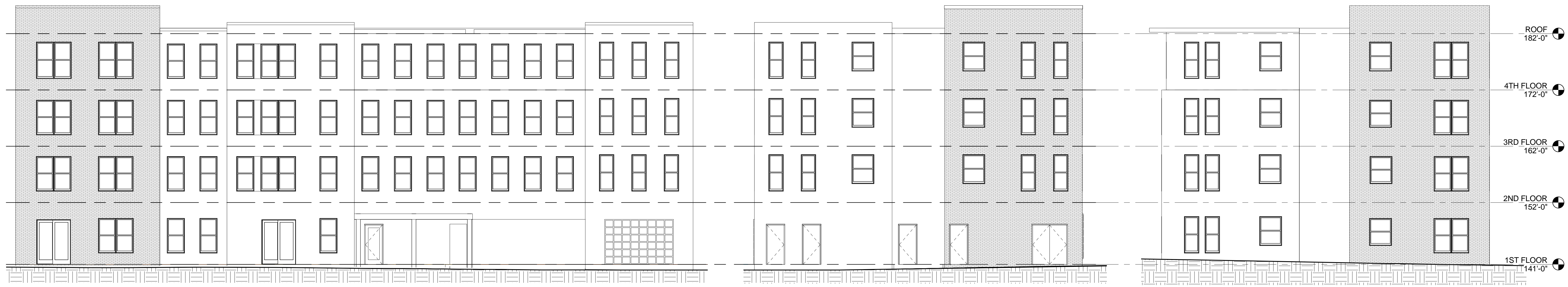


1 | WEST ELEVATION
 1/8" = 1'-0" 0 2' 4' 8' 16'



2 | EAST ELEVATION
 1/8" = 1'-0" 0 2' 4' 8' 16'

3 | NORTH ELEVATION
 1/8" = 1'-0" 0 2' 4' 8' 16'

4 | SOUTH ELEVATION
 1/8" = 1'-0" 0 2' 4' 8' 16'

CARLETON STREET

Carleton Street, Portland, Maine

APRIL 30, 2015

A2.1

