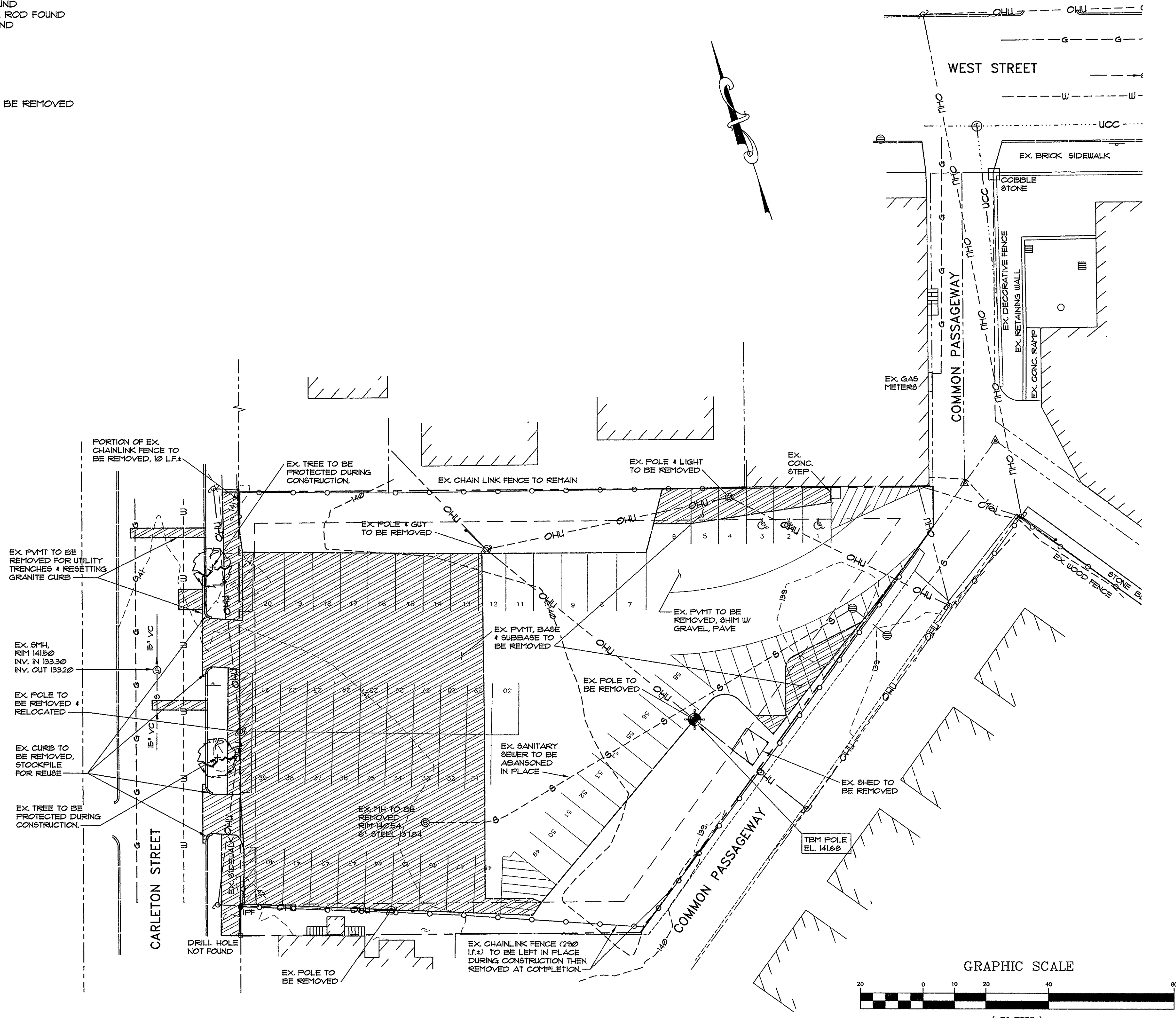


LEGEND

EXISTING

---	PROPERTY LINE
---	BUILDING SETBACK
---	ADJUTERS PROPERTY
---	EDGE OF PAVEMENT
---	CONTOURS
---	BUILDING
---	EDGE OF GRAVEL
---	CURB
---	GAS LINE
---	SANITARY SEWER
---	STORM DRAIN
---	OVERHEAD UTILITY
---	UNDERGROUND COMMUNICATION CABLE
---	WATER LINE
---	CATCH BASIN
---	DRAIN MANHOLE
---	TELEPHONE MANHOLE
---	SEWER MANHOLE
---	UTILITY POLE
---	UTILITY POLE W/ GUY WIRE
---	SIGN
---	CHAINLINK FENCE
---	MONUMENT FOUND
---	IRON PIPE OR ROD FOUND
---	MAG NAIL FOUND
---	HYDRANT
---	GATE VALVE
---	GAS VALVE
---	LIGHT POLE
---	TREE
---	BENCHMARK
---	PAVEMENT TO BE REMOVED



DEMOLITION NOTES

1. ANY UNUSED SERVICE LINES ARE TO BE PROPERLY REMOVED TO THE MAIN CAP EACH IN ACCORDANCE WITH THE APPROPRIATE UTILITY REQUIREMENTS.
2. NOTIFY THE CITY OF PORTLAND ARBORIST TO APPROVE TREE PROTECTION MEASURES OF THE EXISTING TREES.
3. COORDINATE WITH THE ELECTRICAL CONSULTANT PLANS TO MAINTAIN SERVICES TO ADJACENT BUILDINGS.

PINKHAM & GREER
CIVIL ENGINEERS
 28 WANNAM AVE. PORTLAND, ME. 04103
 TEL: 207.781.5942 FAX: 207.781.4245

Professional Engineer Seal for Thomas Greer, License No. 4206, State of Maine. Includes signature and date 5/7/15.

REV.	DATE	DESCRIPTION
1	5/7/15	ISSUED FOR SUBDIVISION & SITE PLAN APPROVAL

AVESTA BUTLER PAYSON PL
 307 CUMBERLAND AVENUE
 PORTLAND, ME. 04101

SCALE: AS SHOWN
 DATE: APRIL 10, 2015
 PROJECT: 15108

DRN BY: RJS/JDC
 DESG BY: TSG
 CHK BY:

17 CARLETON STREET
 CARLETON STREET, PORTLAND, MAINE

**EXISTING CONDITIONS
 AND DEMOLITION PLAN**