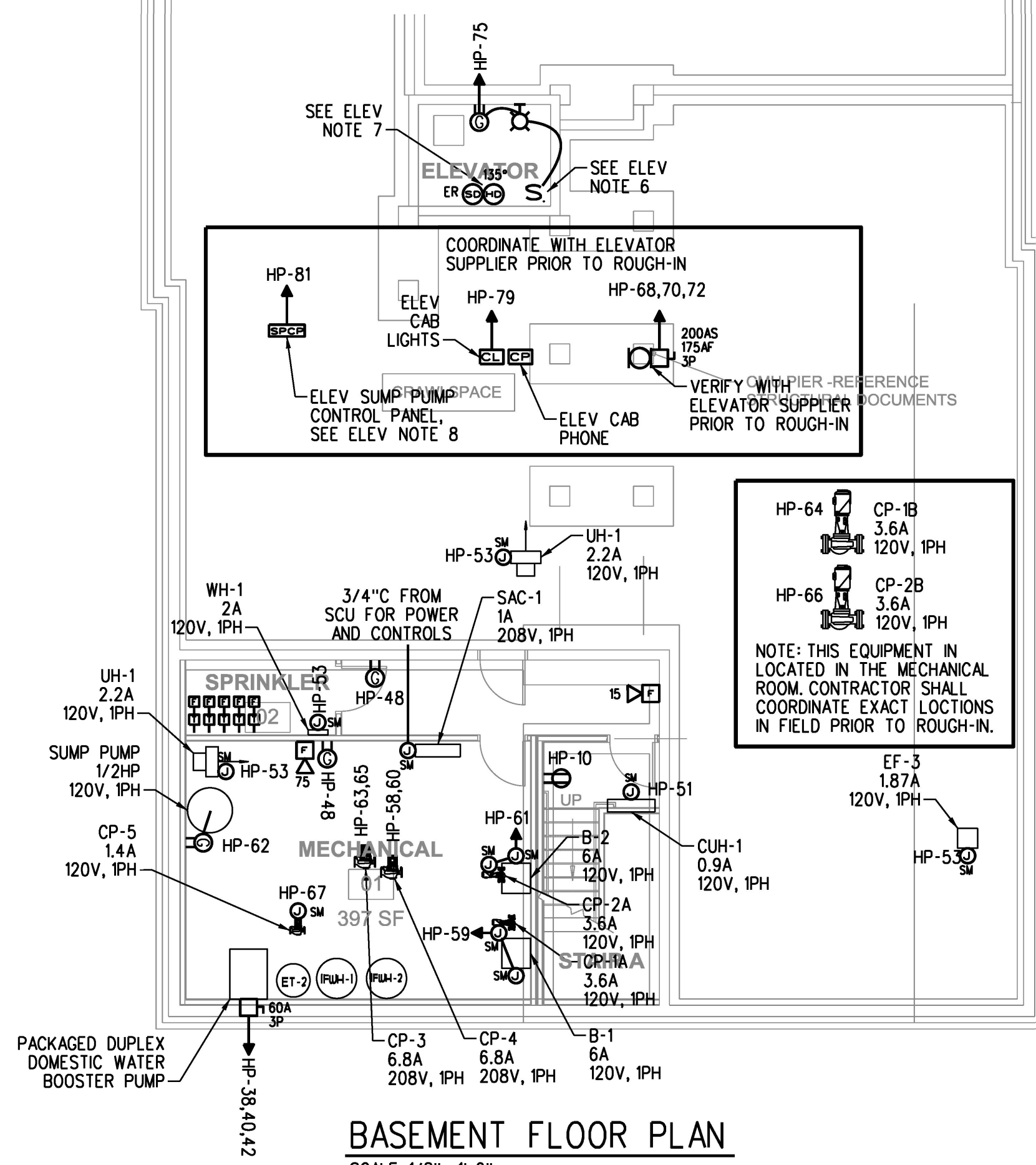


### ELEVATOR NOTES

1. CONNECT ALL REQUIRED SMOKE DETECTORS FOR ELEVATOR RECALL. VERIFY REQUIREMENTS WITH ELEVATOR VENDOR AND LOCAL FIRE DEPARTMENT FOR ELEVATOR SMOKE DETECTORS AND INSTALL IN ACCORDANCE WITH NFPA 72.
2. PROVIDE ELEVATOR POWER SHUTDOWN VIA HEAT DETECTORS IN ELEVATOR SHAFT, PIT, AND MACHINE ROOM. HEAT DETECTORS ADJACENT TO SPRINKLER HEADS SHALL ALARM BEFORE SPRINKLER HEAD ACTIVATION BASED ON RATE OF TEMPERATURE RISE FOR THE SPRINKLER HEAD. HEAT DETECTORS SHALL BE INSTALLED WITHIN TWO FEET OF THE SPRINKLER HEAD. PROVIDE A CONNECTION TO A SHUNT-TRIP CIRCUIT BREAKER FOR ELEVATOR POWER SHUTDOWN. THE FIRE ALARM SYSTEM SHALL MONITOR SHUNT TRIP CONTROL POWER. COORDINATE WORK WITH THE LOCAL AUTHORITY HAVING JURISDICTION (AHJ).
3. PROVIDE A CONNECTION FROM THE ELEVATOR TAMPER SWITCH TO THE FIRE ALARM CONTROL PANEL (FACP).
4. COMPLY WITH REQUIREMENTS ASME A17.1 AND NFPA 72.
5. AUTOMATIC TRANSFER SWITCHES (ATS) MONITORING: PROVIDE 2\*14AWG\*1\*14GND IN 1/2" C. FROM ELEVATOR CONTROL PANEL TO ATS DRY CONTACTS.
6. PLACE SWITCH AT TOP OF ELEVATOR PIT ACCESS LADDER. COORDINATE LIGHT AND RECEPTACLE LOCATION WITH ELEVATOR SUMP.
7. PLACE ONE SET IN ELEVATOR PIT AND ONE SET AT TOP OF ELEVATOR SHAFT.
8. COORDINATE LOCATION OF SUMP PUMP CONTROL PANEL WITH ELEVATOR SUPPLIER AND SUMP LOCATION.
9. CONTRACTOR SHALL CONFIRM LOCATION OF ALL ELEVATOR ASSOCIATED EQUIPMENT WITH VENDOR PRIOR TO ROUGH-IN.



**BASEMENT FLOOR PLAN**  
SCALE: 1/8" = 1'-0"

### WORK NOTES

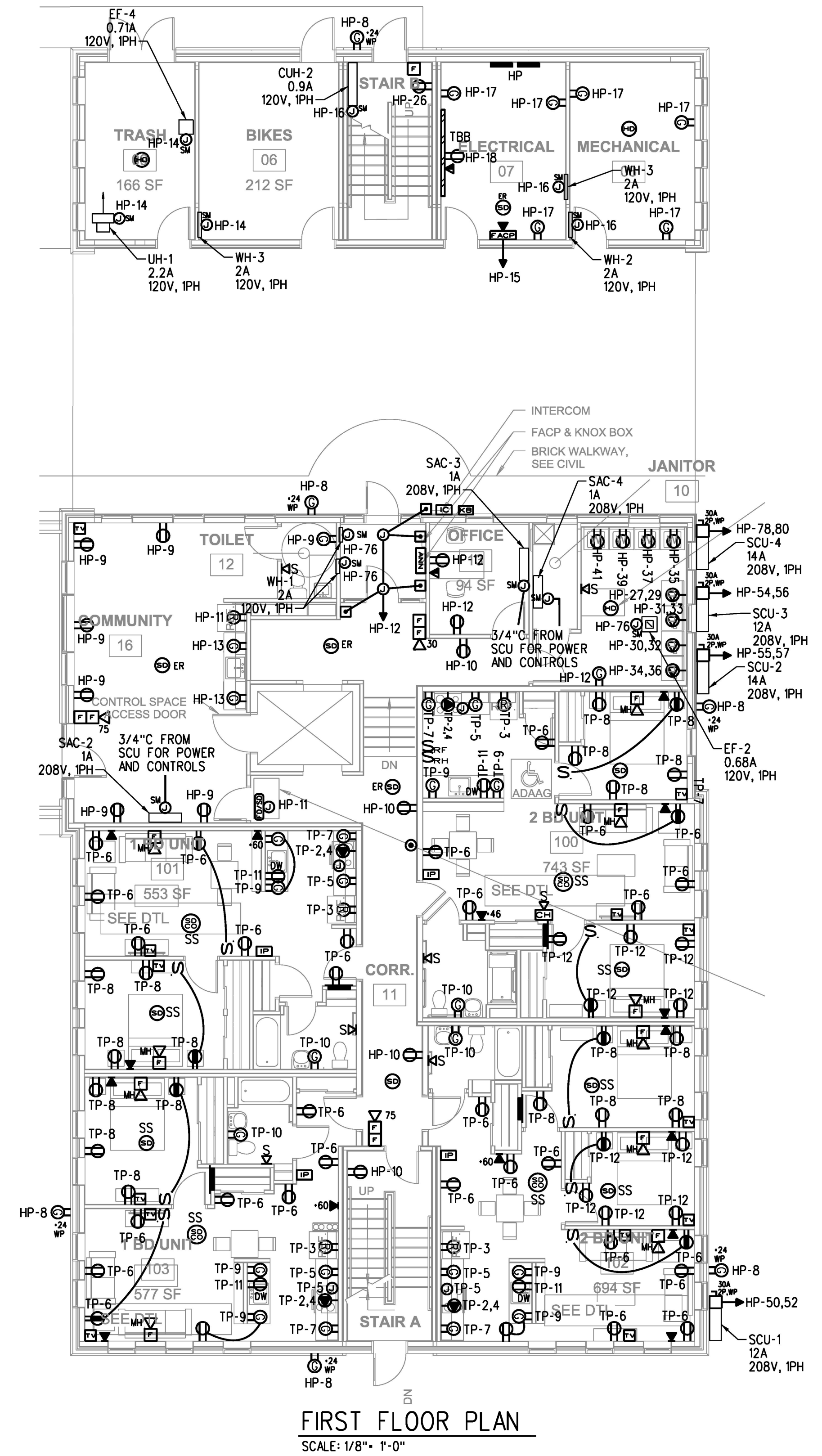
1. RESIDENTIAL LOAD CENTERS: LOAD CENTERS LOCATED IN APARTMENTS SHALL BE MOUNTED SO NO CIRCUIT BREAKER HANDLE IS MORE THAN 48 AFF. ALL UNITS ARE EITHER A OF B PER ANSI 117.1-2009 (REF 1003.9 AND 1004.9).
2. FIRE ALARM SYSTEM STROBES: ALL ROOMS IN HANDICAP DESIGNATED APARTMENTS SHALL HAVE FIRE ALARM SYSTEM STROBES, 177CD IN SLEEPING ROOMS AND 15CD IN ALL OTHERS.
3. FAN/LIGHT SWITCHES FOR OVEN HOODS: OVEN HOODS IN HANDICAP DESIGNATED APARTMENTS SHALL HAVE FAN AND LIGHT SWITCHES MOUNTED AT COUNTER HEIGHT 46 AFF.
4. DOOR BELL AND STROBE: PROVIDE AN AUDIO/VISUAL ALARM OPERATED BY A DOOR BELL BUTTON (HARD WIRED) AT THE UNIT ENTRANCE FOR THE UNIT DESIGNATED TO COMPLY WITH HEARING AND VISION IMPAIRMENTS. IN ADDITION THE BUILDING INTERCOM MUST BE CAPABLE OF SUPPORTING TTY COMMUNICATIONS.

### GENERAL NOTES:

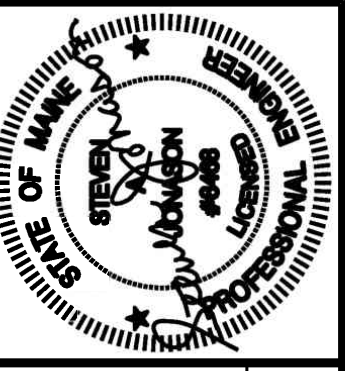
1. SWITCHES, OUTLETS, TEL JACKS AND TV JACKS TO BE STAGGERED IN COMMON WALLS BETWEEN UNITS TYPICAL. PROVIDE PUTTY PADS IN INSTANCES WHERE DEVICES CANNOT BE PROPERLY STAGGERED.
2. CONTRACTOR SHALL ROUGH IN BOXES IN ONE OF EACH UNIT TYPE FOR REVIEW IN THE FIELD BY THE OWNER.
3. REFER TO ARCHITECTURAL REFLECTED CEILING PLAN TO COORDINATE THE LOCATION OF LIGHTING FIXTURES.
4. ALL PRODUCTS OF COMBUSTION DETECTORS (SMOKE DETECTORS) SHALL PROVIDE BOTH AUDIO AND VISUAL ALARMS.
5. SWITCHES FOR RANGE HOOD FAN AND LIGHT SHALL BE MOUNTED AT COUNTER HEIGHT. ALSO REFER TO WORK NOTE 3 ABOVE.

### UNIT FIRE ALARM NOTES:

1. SUPERVISED CENTRAL SYSTEM ACTIVATION SHALL ALARM ALL SYSTEM AUDIO/VISUAL AND VISUAL ONLY DEVICES.
  2. WHEN UNIT SMOKE DETECTOR GOES INTO ALARM ALL SINGLE STATION AUDIO/VISUAL AND VISUAL ONLY DEVICES WITHIN THAT UNIT WILL ACTIVATE. THIS WILL NOT ACTIVATE THE ENTIRE BUILDING SYSTEM.
  3. THE WALL MOUNTED HORN/STROBES WITHIN THE LIVING UNITS SHALL BE CONNECTED TO THE SUPERVISED CENTRAL SYSTEM.
  4. CARBON MONOXIDE DETECTORS (120V) IN RESIDENCES SHALL BE INSTALLED AT LEAST 10 FEET FROM ANY HEAT SOURCE.
  5. INTERCONNECT ALL SINGLE STATION 120 VOLT CARBON MONOXIDE (CO) AND SMOKE DETECTORS WITHIN EACH LIVING UNIT. ALL INTERCONNECTED DETECTORS SHALL BE ON THE SAME CIRCUIT FOR PROPER OPERATION. REFER TO MANUFACTURER'S INSTALLATION MANUAL AND MOUNT DETECTORS IN ACCORDANCE WITH MANUFACTURER'S RECOMMENDATIONS. CO DETECTORS SHALL HAVE AN ALARM SOUND THAT IS DIFFERENT THAN THE LIVING UNIT SMOKE DETECTORS AND FIRE ALARM SYSTEM ALARMS.
  6. A/V DEVICES IN BEDROOMS SHALL BE 75db AND 15cd. STROBES SHALL BE 177Cd FOR HEARING IMPAIRED.
- AUDIBLE ALARM Db LEVELS SHALL COMPLY WITH NFPA 72.



**FIRST FLOOR PLAN**  
SCALE: 1/8" = 1'-0"



Prepared For:  
**AVESTA BUTLER  
PAYSON PL.**  
307 CUMBERLAND AVE  
PORTLAND, ME. 04101



Consulting Engineer:  
**BENNETT  
ENGINEERING**  
MECHANICAL, ELECTRICAL,  
PLUMBING (MEEP)  
(207) 772-4056



Architect:  
**ARCHETYPE  
architects**  
48 Union Wharf Portland, Maine 04101  
(207) 772-6022 Fax (207) 772-4056

Project:  
**CARLETON STREET  
SENIOR HOUSING**  
17 CARLETON ST.  
PORTLAND, MAINE

Revisions:

Date: 08/08/2016  
Scale: As Noted

**BASEMENT AND FIRST  
FLOOR POWER PLANS**

**E3.01**