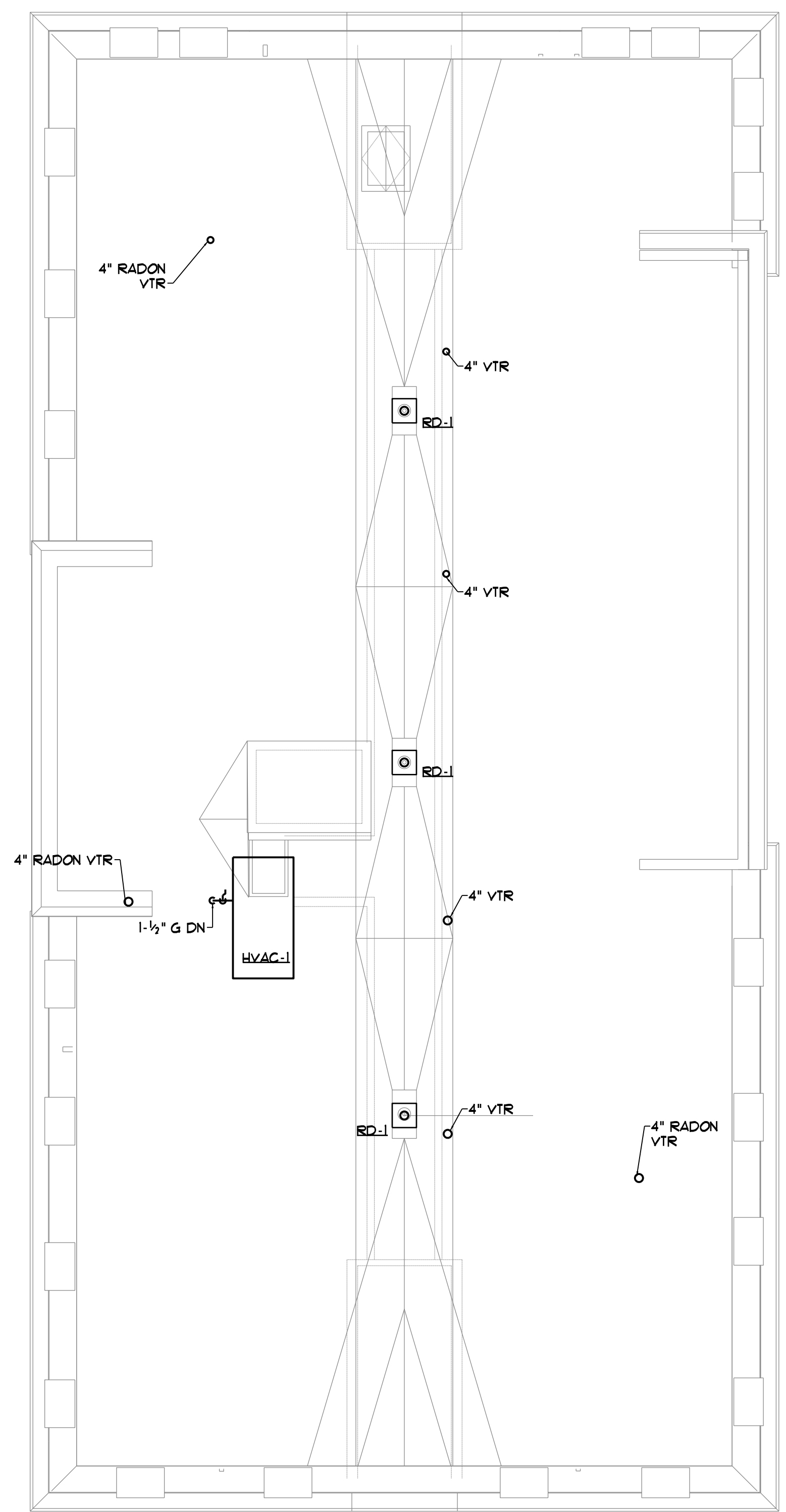
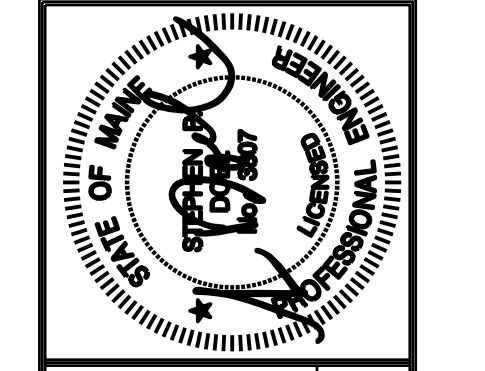


FOURTH FLOOR PLUMBING PLAN
SCALE - 1/8" = 1'-0"

NOTES
UNIT BRANCH PIPING SHALL BE 3/4" HD 1 3/4" CW UNLESS NOTED OTHERWISE.
SANITARY AND VENT PIPING STACKS SHALL BE AS FOLLOWS (UNLESS NOTED OTHERWISE):
SINGLE FIXTURES EACH FLOOR
WATER CLOSETS (P-1/P-1A) - 3" S, 2" V
LAVATORIES (P-2/P-2A) - 2" S, 2" V
TUBS/SHOWERS (P-3, P-3A, P-3B) - 3" S, 2" V
KITCHEN SINKS (P-4/P-4A) - 2" S, 2" V
-- SANITARY STACK SHALL TRANSITION TO 4" IN VERTICAL STACK BELOW FIRST FLOOR AND PRIOR TO ANY HORIZONTAL PIPING OR OFFSET.
BACK TO BACK FIXTURES EACH FLOOR
WATER CLOSETS (P-1/P-1A) - 4" S, 3" V
LAVATORIES (P-2/P-2A) - 2" S, 2" V
TUBS/SHOWERS (P-3, P-3A, P-3B) - 3" S, 2" V
KITCHEN SINKS (P-4/P-4A) - 3" S, 2" V



ROOF PLUMBING PLAN
SCALE - 1/8" = 1'-0"



Prepared For:
**AVESTA BUTLER
PAYSON PL.**
307 CUMBERLAND AVE
PORTLAND, ME. 04101

Consulting Engineer:
**BENNETT
ENGINEERING**
MECHANICAL, ELECTRICAL
0071889495

Architect:
**ARCHETYPE
architects**
48 Union Wharf Portland, Maine 04101
(207) 772-6022 Fax (207) 772-4056

Project:
**CARLETON STREET
SENIOR HOUSING**
17 CARLETON ST.
PORTLAND, MAINE

Revisions:

Date: 08/08/2016
Scale: As Noted
**FOURTH FLOOR AND ROOF
PLUMBING PLANS**

M2.03