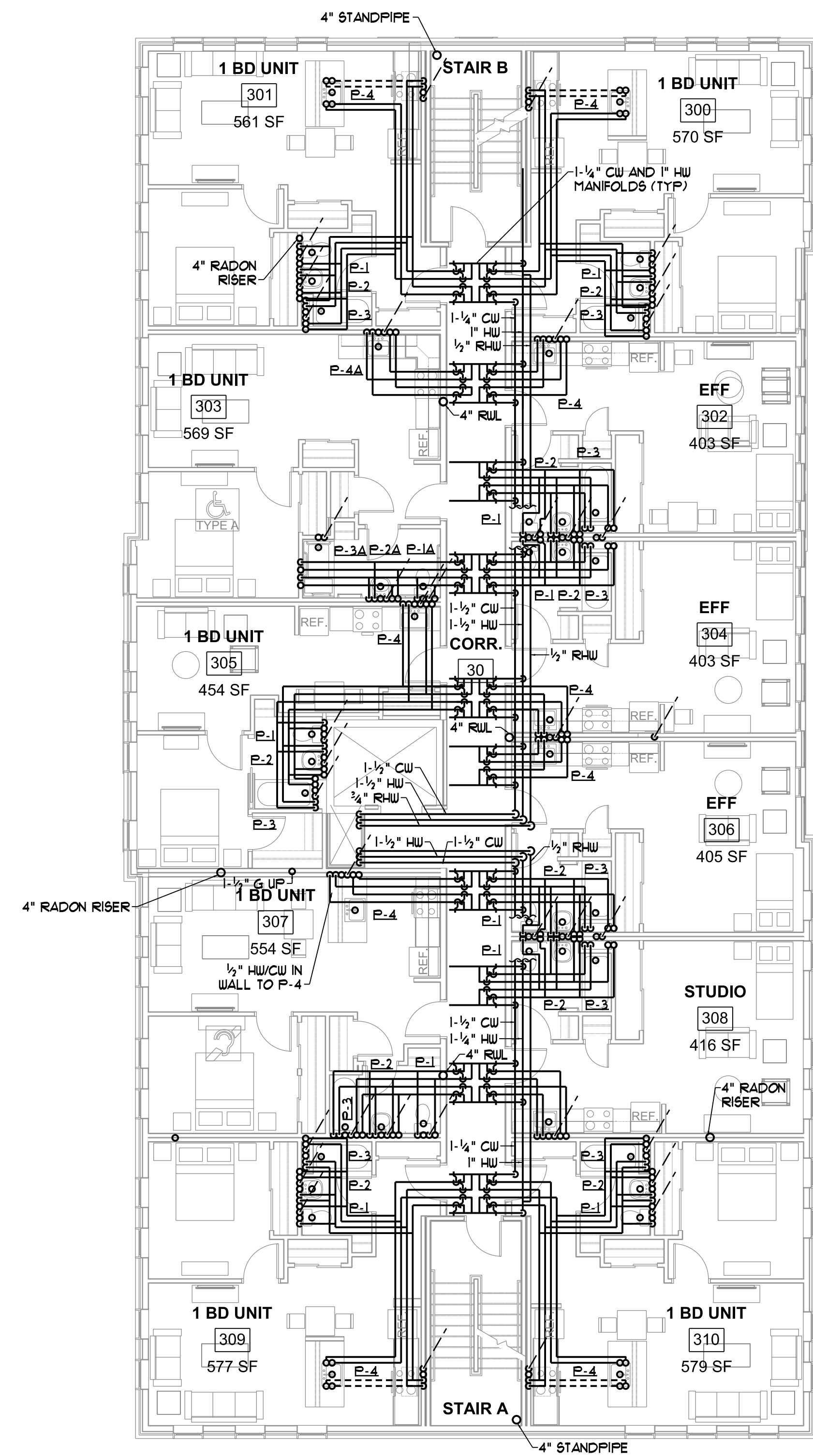
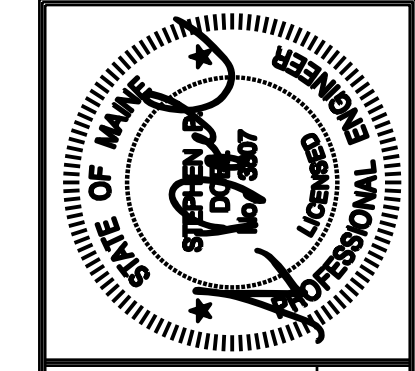


SECOND FLOOR PLUMBING PLAN
SCALE - 1/8" = 1'-0"

NOTES
 UNIT BRANCH PIPING SHALL BE 3/4" HW & 3/4" CW UNLESS NOTED OTHERWISE.
 SANITARY AND VENT PIPING STACKS SHALL BE AS FOLLOWS (UNLESS NOTED OTHERWISE):
 SINGLE FIXTURES EACH FLOOR
 WATER CLOSETS (P-1/P-1A) - 3" S, 2" V
 LAVATORIES (P-2/P-2A) - 2" S, 2" V
 TUBS/SHOWERS (P-3, P-3A, P-3B) - 3" S, 2" V
 KITCHEN SINKS (P-4/P-4A) - 2" S, 2" V
 ** - SANITARY STACK SHALL TRANSITION TO 4" IN VERTICAL STACK BELOW FIRST FLOOR AND PRIOR TO ANY HORIZONTAL PIPING OR OFFSET.
 BACK TO BACK FIXTURES EACH FLOOR
 WATER CLOSETS (P-1/P-1A) - 4" S, 3" V
 LAVATORIES (P-2/P-2A) - 2" S, 2" V
 TUBS/SHOWERS (P-3, P-3A, P-3B) - 3" S, 2" V
 KITCHEN SINKS (P-4/P-4A) - 3" S, 2" V



THIRD FLOOR PLUMBING PLAN
SCALE - 1/8" = 1'-0"



Prepared For:
**AVESTA BUTLER
 PAYSON PL.**
 307 CUMBERLAND AVE
 PORTLAND, ME. 04101

Consulting Engineer:
**BENNETT
 ENGINEERING**
 MECHANICAL, ELECTRICAL
 607/6869475

Architect:
**ARCHETYPE
 architects**
 48 Union Wharf Portland, Maine 04101
 (207) 772-6022 Fax (207) 772-4056

Project:
**CARLETON STREET
 SENIOR HOUSING**
 17 CARLETON ST.
 PORTLAND, MAINE

Revisions:

Date: 08/08/2016
 Scale: As Noted
**SECOND AND THIRD FLOOR
 PLUMBING PLANS**

M2.02