

Prepared For:
**AVESTA BUTLER
 PAYSON PL.**
 307 CUMBERLAND AVE
 PORTLAND, ME. 04101



Consulting Engineer:
**BENNETT
 ENGINEERING**
 MECHANICAL/ELECTRICAL
 607-686-9475



Architect:
**ARCHETYPE
 architects**
 48 Union Wharf Portland, Maine 04101
 (207) 772-6022 Fax (207) 772-4056

Project:

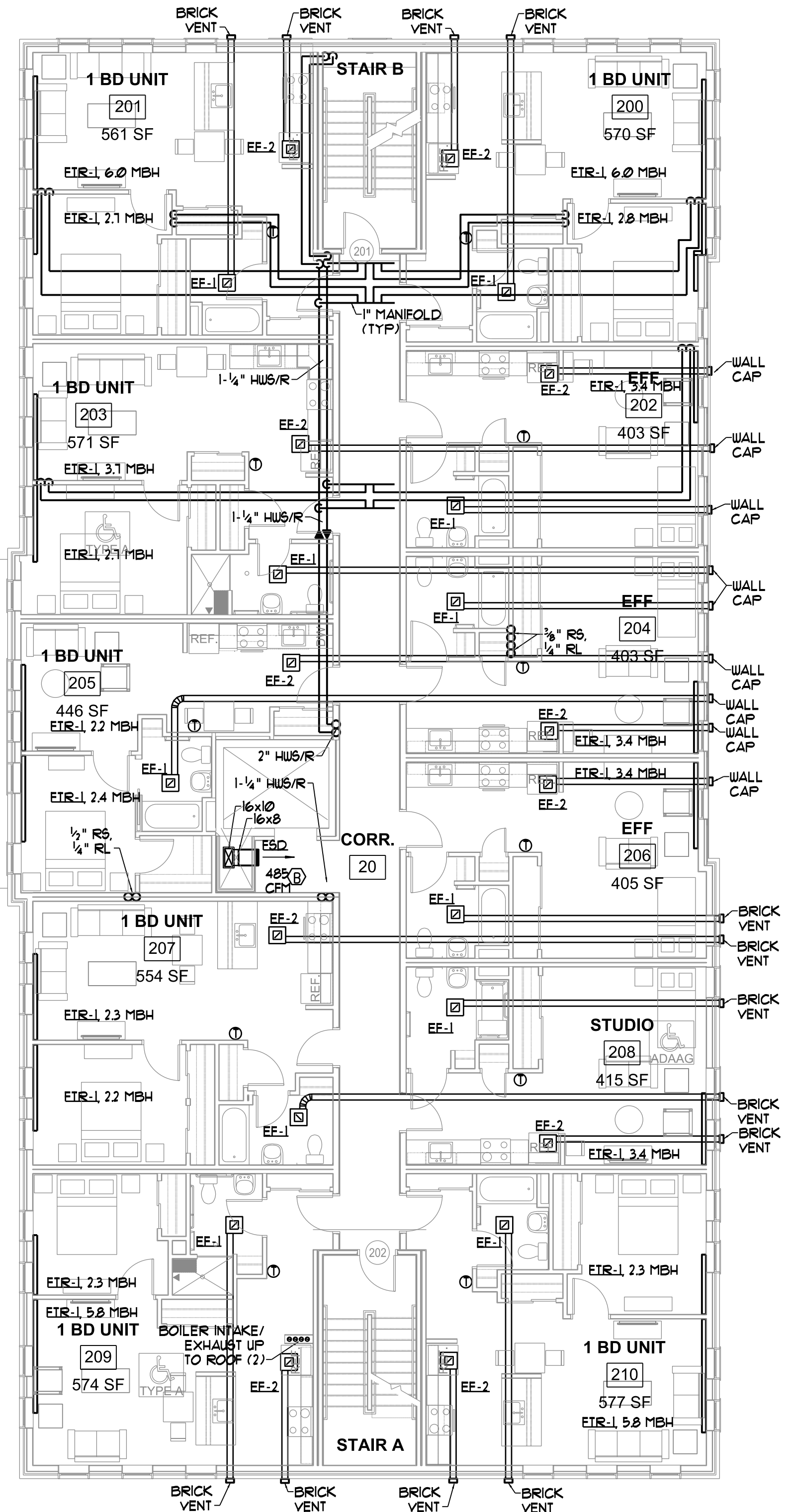
**CARLETON STREET
 SENIOR HOUSING**
 17 CARLETON ST.
 PORTLAND, MAINE

Revisions:

Date: 08/08/2016
 Scale: As Noted

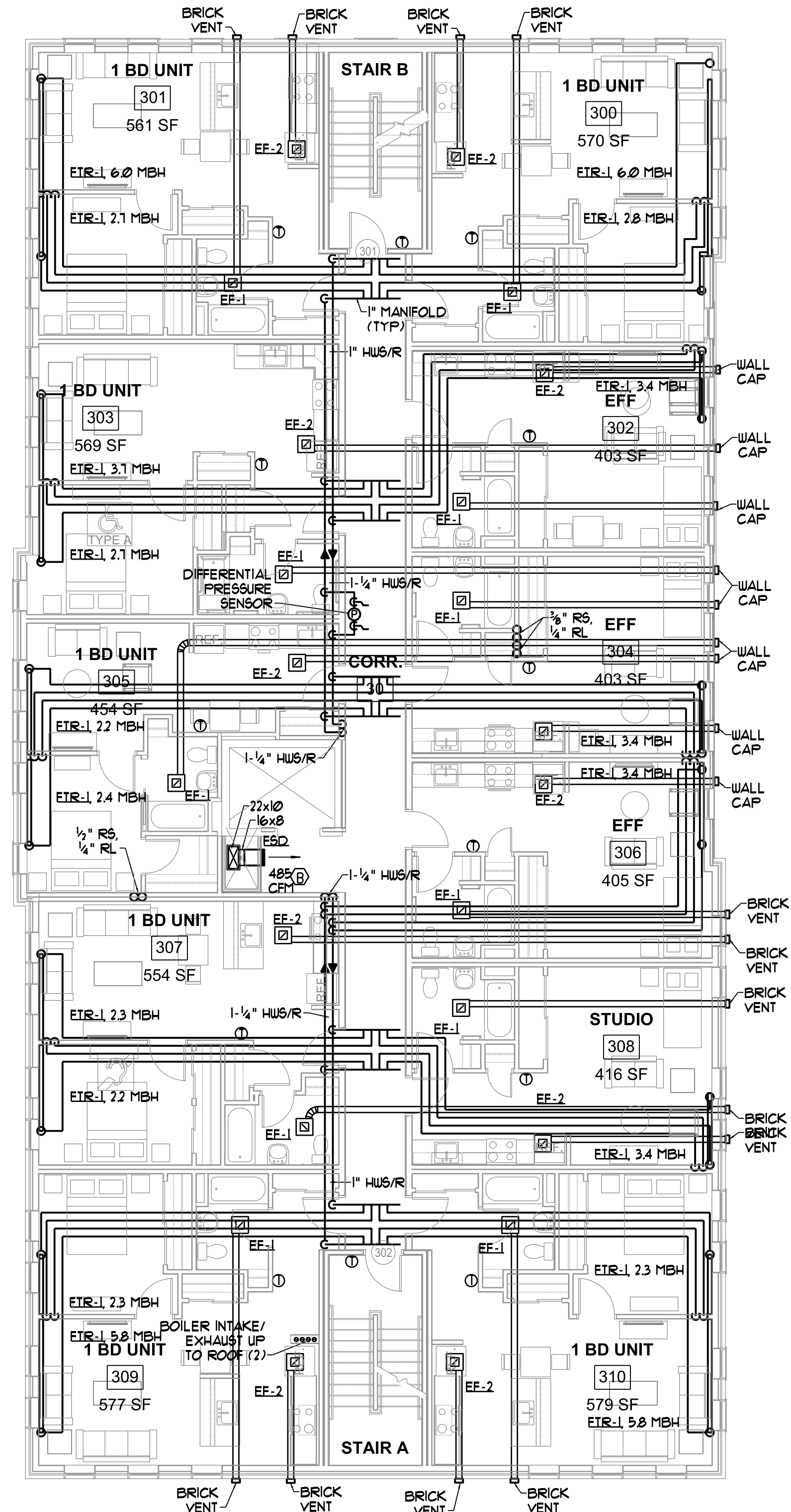
**SECOND AND THIRD FLOOR
 MECHANICAL PLANS**

M1.02



SECOND FLOOR MECHANICAL PLAN
 SCALE - 1/8" = 1'-0"

NOTES
 1. HWS/R BRANCHES SHALL BE 3/4" UNLESS OTHERWISE NOTED.
 2. EXHAUST FAN DUCTS SHALL BE 6" UNLESS OTHERWISE NOTED.
 3. COORDINATE WALL CAP AND BRICK VENT LOCATIONS WITH ARCHITECTURAL ELEVATIONS, PROVIDE DUCT OFFSETS AS NECESSARY.



THIRD FLOOR MECHANICAL PLAN
 SCALE - 1/8" = 1'-0"