

abutting building

See Detail 8

paved parking

MNS N62°20'25"W
24.70'

N/F
Carlson
TM: 54 Lot: F-45
CCRD: 18555/154

S29°04'59"W

bulkhead

"Steele House"

B
TM: 5
CCRD

"Reed House"

85.41' N29°04'59"W
post and chain fence

CIRS

35.82'
35.6' (deed)
brick

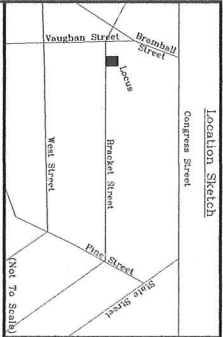
U.P.

entrance

S60°19'01"E
MNS

sidewalk

ackett Street

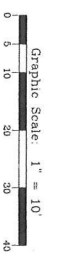
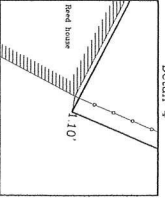
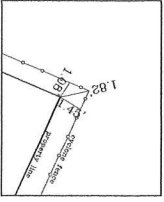
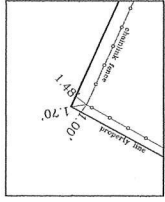
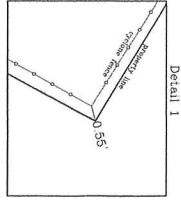
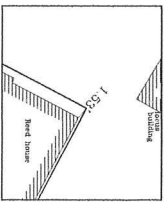
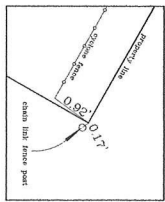
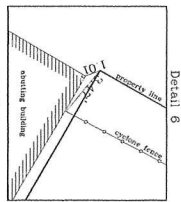
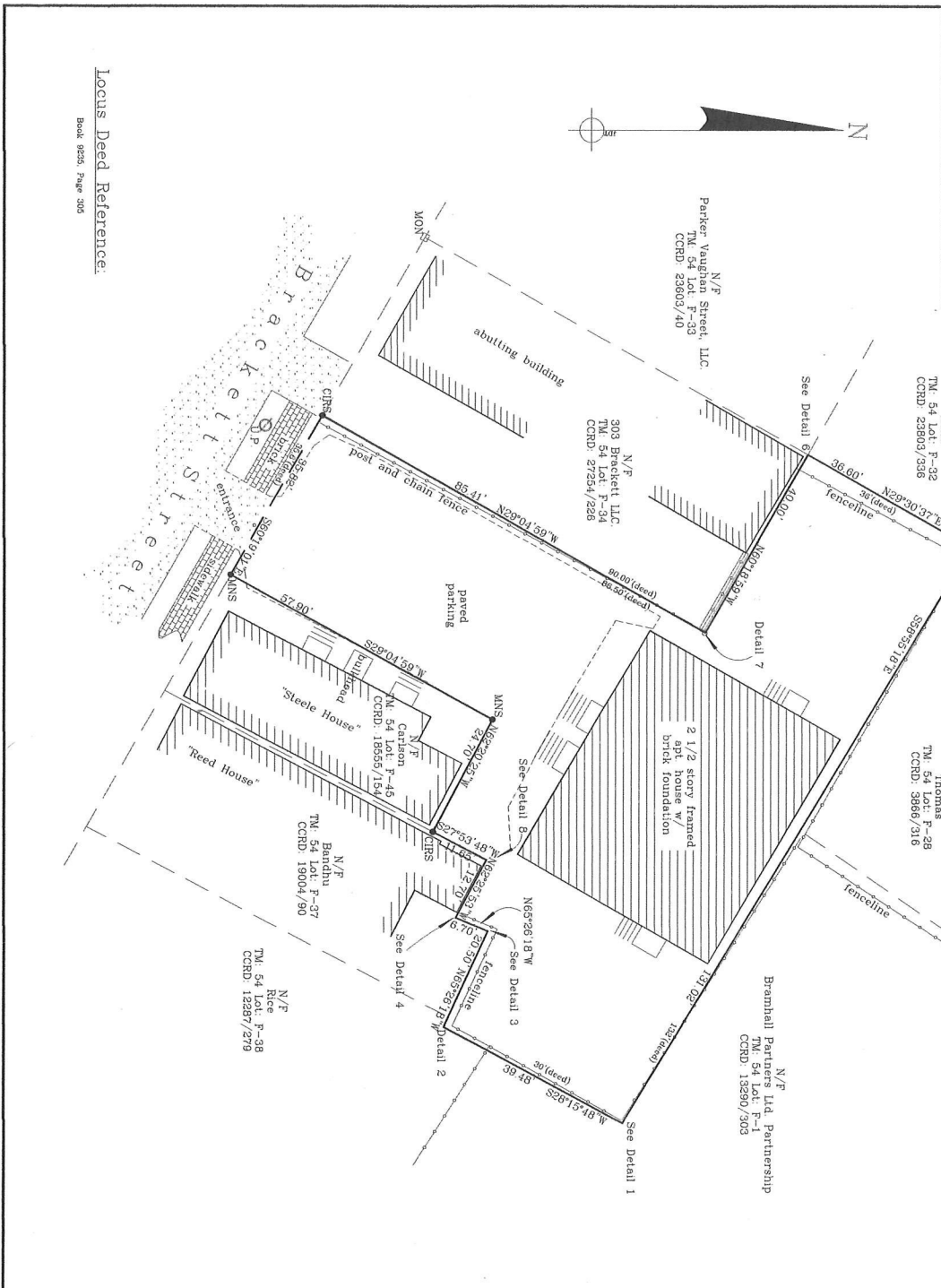


Legend:

- N/F - now or formerly of
- F/W - assumed right of way line
- MON - stone monument found
- U/P - utility pole
- MS - exposed iron rod set "The-Higher"
- M/S - iron nail set

Notes:

1. The lot contains 8,604.74 Sq. Ft.



**BOUNDARY SURVEY OF LAND ON THE
NORTHEASTERLY SIDE OF BRACKETT STREET
IN
PORTLAND, MAINE
MADE FOR
CHRISTOPHER MAFFUCCI
BY
LYNNSTON-HUGHES
Professional Land Surveying Corporation
88 Centre Road, Kennebunkport, Maine 04066**

Book 9236-0203 Sheet 22A Date 07/2011 Project 108-262

Locus Deed Reference:
Book 9236, Page 305