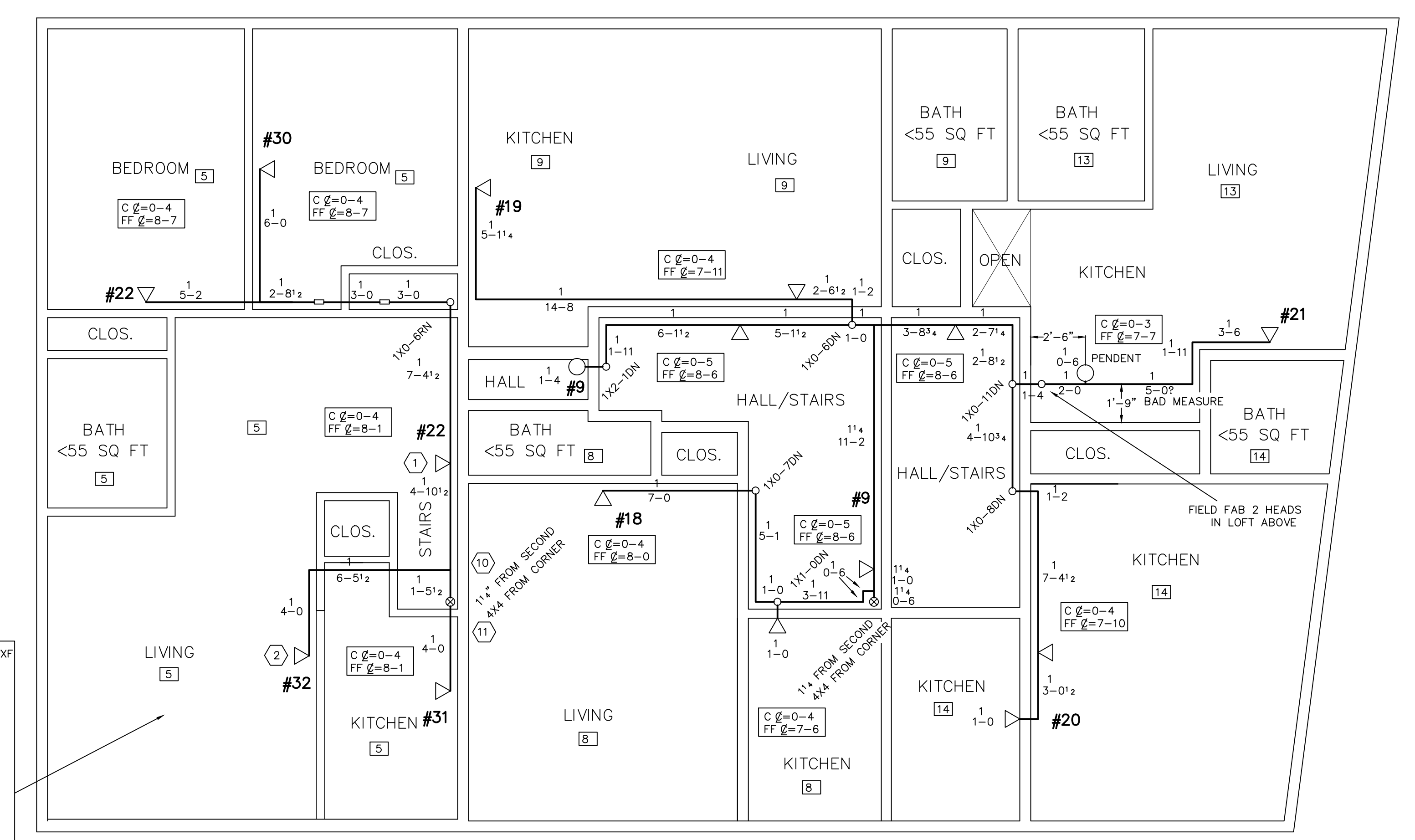
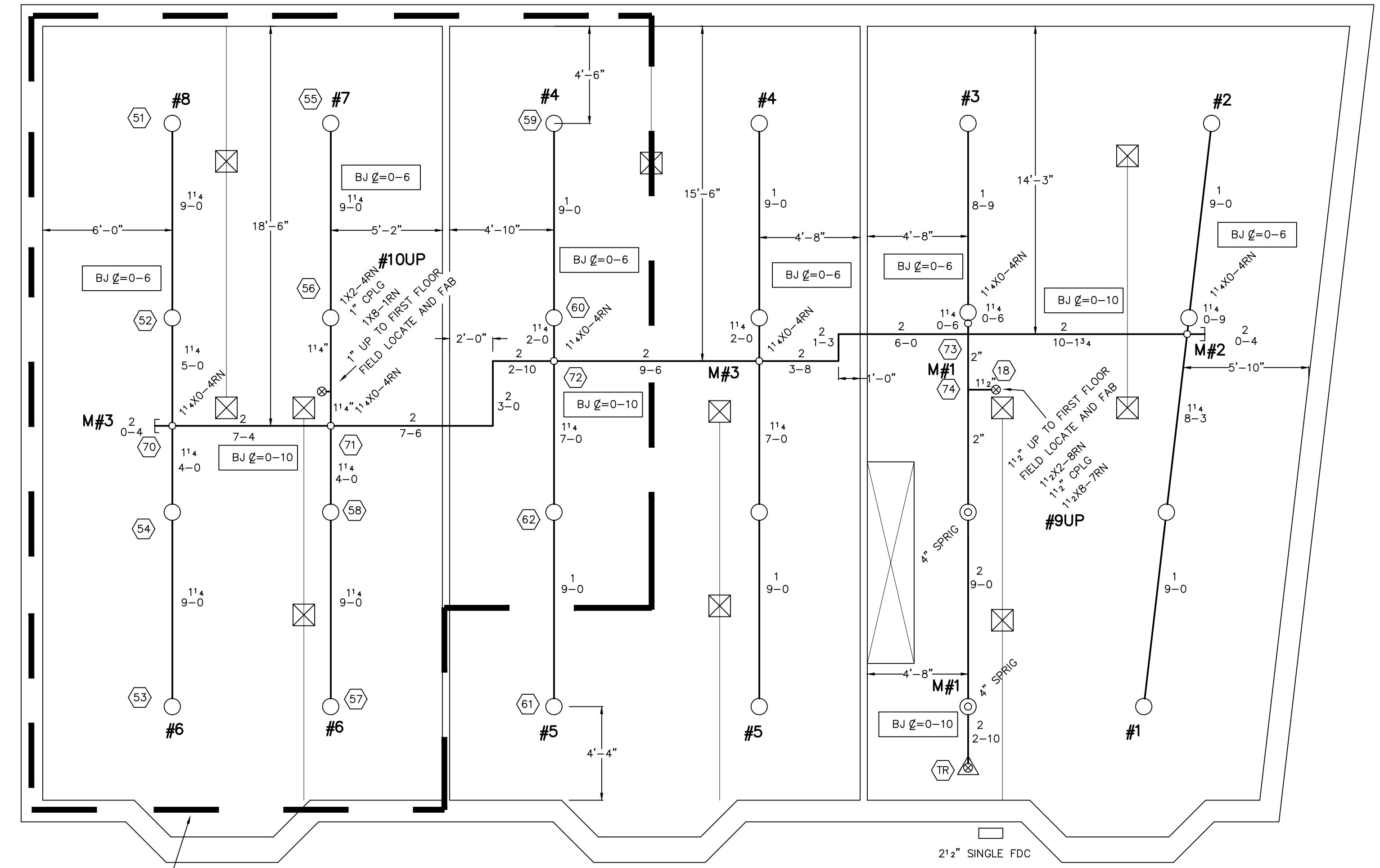


FIRST FLOOR



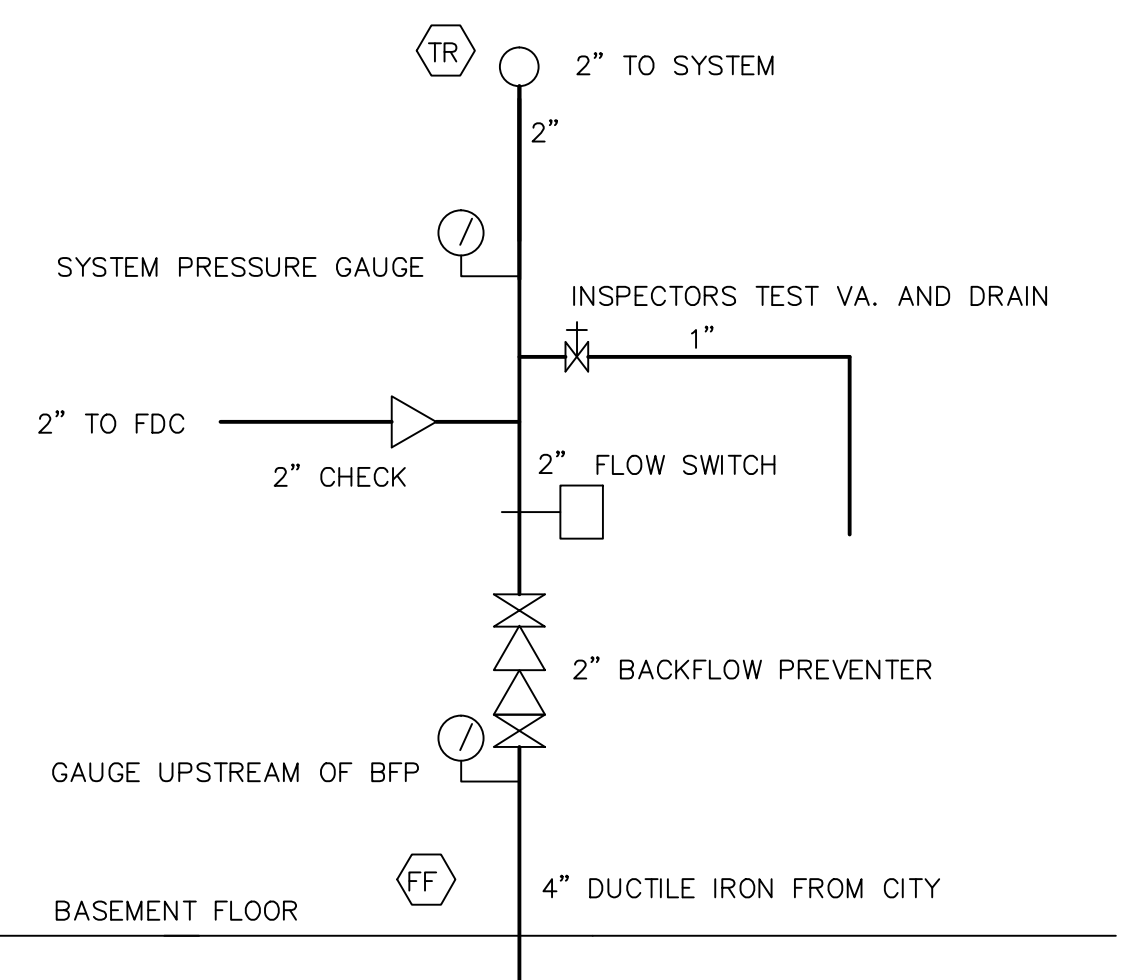
THIRD FLOOR

CALC : BRACKETT STREET THIRD FLR.WXF
 HYDRAULIC DATA:
 BASIS OF DESIGN:
 DENSITY AREA OF COVERAGE
 0.05 2 HEADS
 TOTAL ORIFICE TEMP 2 7/16" 155"
 SPRINKLERS
 SYSTEM DEMAND AT CITY:
 PRESSURE FLOW HOSE
 46.8 32.6 0
 SAFETY MARGIN 5.2 PSI
 OCCUPANCY: APARTMENTS

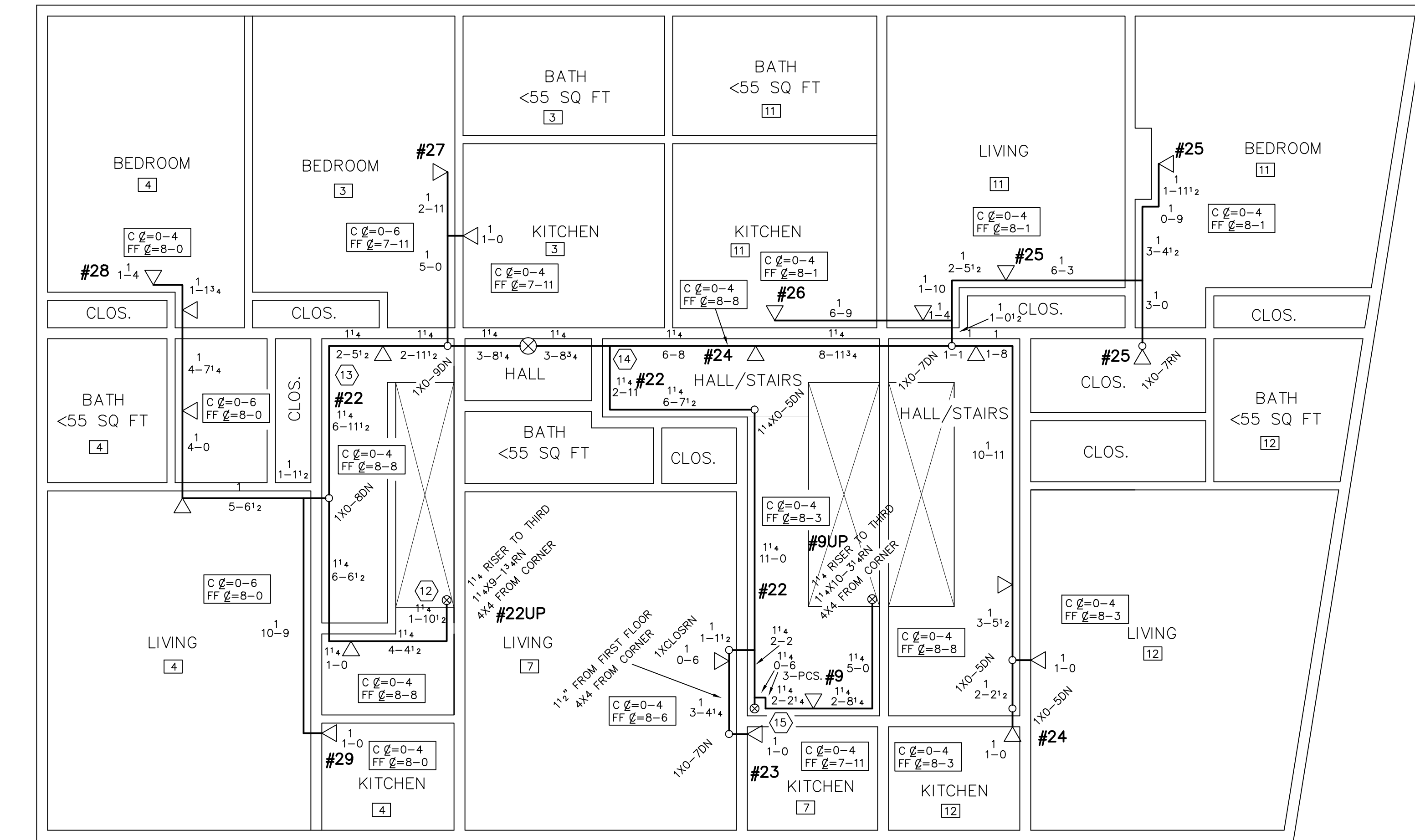


BASEMENT

CALC : BRACKETT STREET BASEMENT.WXF
 HYDRAULIC DATA:
 BASIS OF DESIGN:
 DENSITY AREA OF COVERAGE
 0.15 900 SQ FT
 TOTAL ORIFICE TEMP 11 1/2" 155"
 SPRINKLERS
 SYSTEM DEMAND AT CITY:
 PRESSURE FLOW HOSE
 46.1 189.7 100
 SAFETY MARGIN 5.5 PSI
 OCCUPANCY: BASEMENT



RISER SECTION
NO SCALE



SECOND FLOOR

LEGEND

- ▷ -155' RELIABLE F1FRS44 RES HOR SIDEWALL SPRINKLER
- ⊗ -155' RELIABLE F1FR Q R WHITE PENDENT SPRINKLER
- -155' RELIABLE F1FR Q R BRASS UPRIGHTS
- FF ℄=XX FIN FLR TO CENTERLINE OF PIPE
- BJ ℄=XX BOTTOM OF JOISTS TO CENTERLINE OF PIPE
- C ℄=XX CEILING TO CENTERLINE OF PIPE
- RISE OR DROP NIPPLE
- ⊗ RISER BETWEEN FLOORS
- ALL PIPE 4" FROM WALLS UNLESS NOTED

SYSTEM CLASSIFICATION

A WET PIPE NFPA #13R
 SPRINKLER SYSTEM TO BE INSTALLED IN ALL
 AREAS OF THE BUILDING TO MEET NFPA,
 STATE, AND CITY OF PORTLAND CODES.

GENERAL NOTES

ALL DIMENSIONS ARE CENTER TO CENTER U/N
 ALL 2" AND SMALLER PIPE TO SCH 40 BLACK STEEL
 ALL SCREWED FITTINGS TO BE STD. WT. C.I. BLACK U/N
 ALL HANGER SPACING AND SIZES TO CONFORM TO NFPA #13.
 SUFFICIENT HEAT TO PREVENT FREEZING OF THE WET PIPE SPRINKLER SYSTEM
 AND REQUIRED INSULATION METHODS PER NFPA STANDARDS
 ARE REQUIRED TO BE FURNISHED BY THE BUYER/OWNER.

DEAN & ALLYN, INC.
 FIRE PROTECTION • SPECIAL HAZARD
 PO BOX 709, GRAY, MAINE 04039
 (207)657-5646 FAX: (207)657-5647

REVISIONS	DATE	APPROVED BY	DATE	SURVEYED BY	HAK	2-18-16	TITLE

279 BRACKETT STREET
 PORTLAND, MAINE

NO OF SPRINKLERS
SHOWN ON THIS SHEET
91
 NO OF SPRINKLERS
ON JOB
91
 CONTRACT NO.
C161323