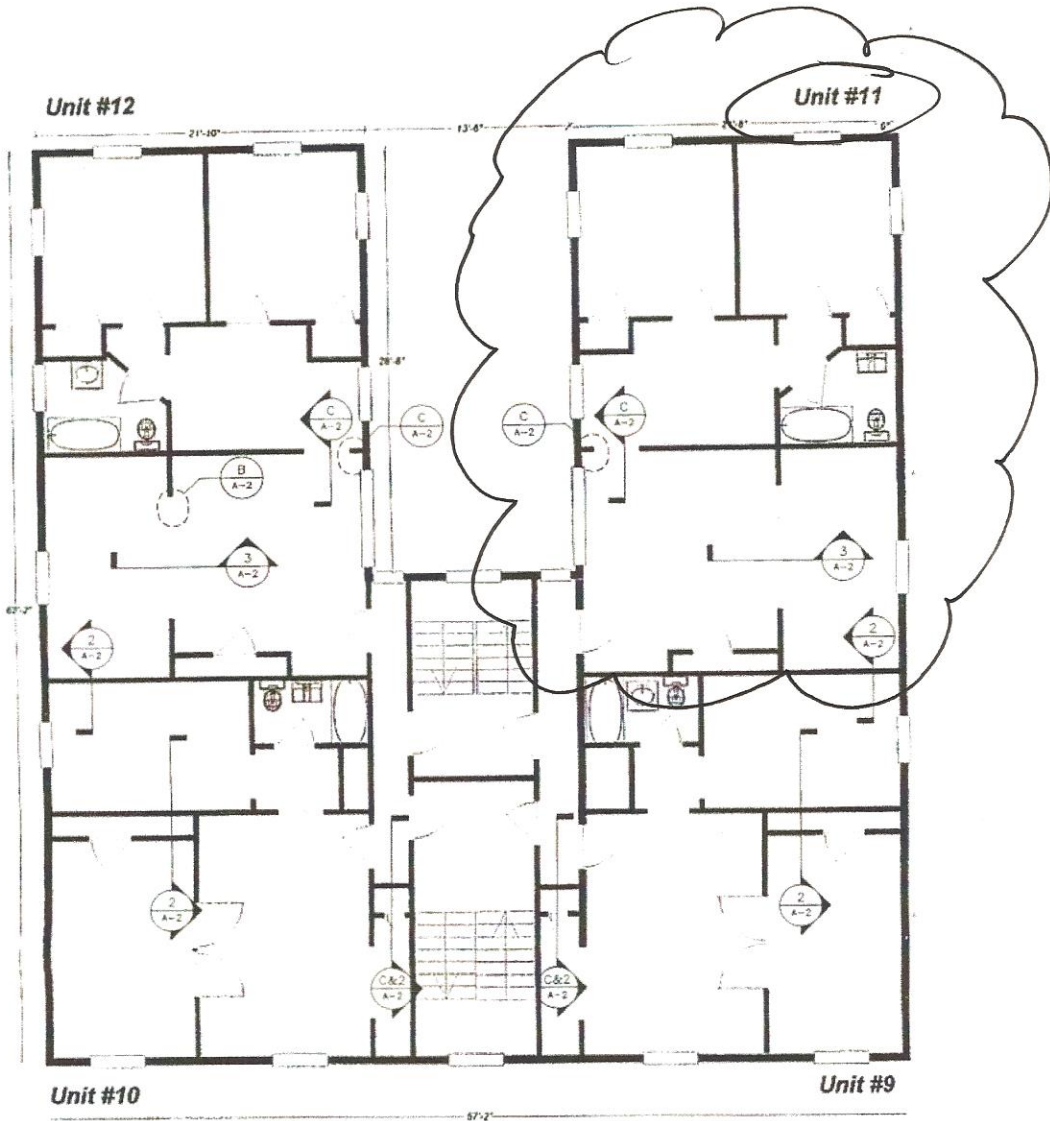


\* CONDO BELOW ATTIC



**THIRD FLOOR  
PROPOSED**

*CAMILLA MOZO  
168 NEAL ST.  
UNIT #11*

- Change entry to closet from hallway to inside Unit 9. The doorway in the hall will be closed up, and a door, 30" x 80" will be created to access the closet from inside the unit.  
**Cost = 12 hours labor x \$30 ph + \$120 materials = \$480**
- A closet in the kitchen of Unit 9 will be eliminated and the space combined with the bedroom closet. The closet door in the kitchen will be closed up, and the partition between the two closets will be removed. The effect will be a single larger closet in the bedroom.  
**Cost = 12 hours labor x \$30 ph + \$60 materials = \$410**
- The door from the kitchen to the bedroom will be removed. The bedroom closet will be removed and the door from the bedroom to the closet will be closed. There will be a solid wall dividing Unit 9 with Unit 11.  
**Cost = 16 hours labor x \$30 ph + \$90 materials = \$570**
- An opening will be created between the two rooms. The opening will be 96" x 80" tall.  
**Cost = 20 hours labor x \$30 ph + \$150 materials = \$750**
- The doorway between the living area and kitchen in Unit 11 will be moved 18" to the left to accommodate planned kitchen cabinetry. The opening will be 28" x 80"  
**Cost = 8 hours labor x \$30 ph + \$60 materials = \$300**

**r Building Costs: \$5,030**

PROPERTY

**FRC CADD**  
Engineering Resource Center  
75 Bialco St  
Portland, Maine 04103  
207-876-8511 Fax 207-876-8512  
E-Mail: [reg@frcadd.com](mailto:reg@frcadd.com)

**JONATHAN CULLEY**  
168 NEAL STREET

REVS:  
CODE:  
TOWN:  
DATE: 2 FEB 06  
SCALE 1/8"=1'-0"  
DRAWN: PES  
TITLE:  
THIRD FLOOR  
REENOVATIONS  
FILE: 06-0012