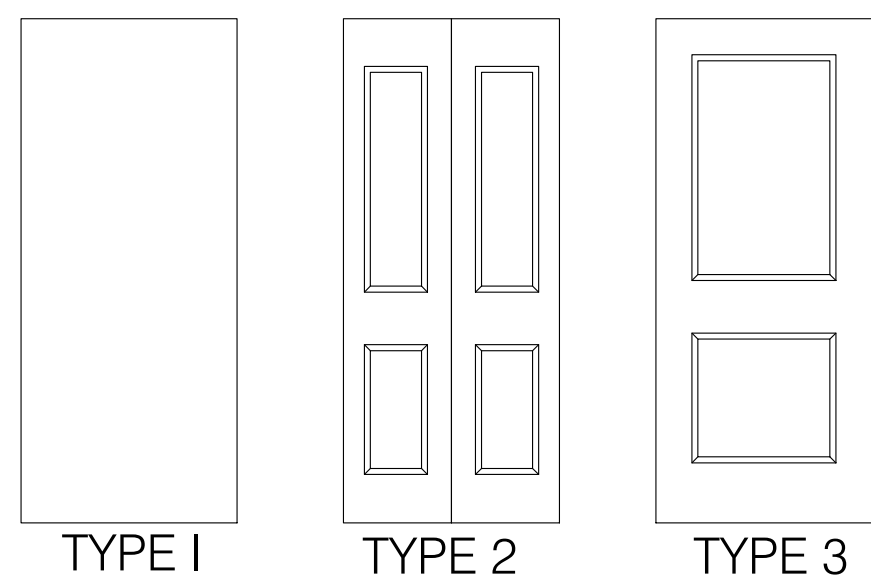


DOOR SCHEDULE								
DOOR #	FROM	TO	DOORS				HARDWARE SET	NOTES
			SIZE	DOOR MATERIAL	DOOR TYPE	DOOR RATING		
100	HALLWAY	UNIT #1 ENTRANCE	2'-10" X 7'-0"	SOLID CORE	TYPE 1	60 MIN	01	1
101	UNIT #1 VESTIBULE	UNIT #1 BEDROOM 1	3'-0" X 7'-0"	SOLID CORE	TYPE 3	-	03	-
102	UNIT #1 VESTIBULE	UNIT #1 BATHROOM	3'-0" X 7'-0"	SOLID CORE	TYPE 3	-	03	-
103	UNIT #1 VESTIBULE	UNIT #1 BEDROOM 2	3'-0" X 7'-0"	SOLID CORE	TYPE 3	-	03	-
104, 105	UNIT #1 BEDROOM 1	UNIT #1 BEDROOM 1 CLOSET	3'-0" X 6'-8"	SOLID CORE	TYPE 2	-	02	-
106, 107	UNIT #1 BEDROOM 2	UNIT #1 BEDROOM 2 CLOSET	3'-0" X 6'-8"	SOLID CORE	TYPE 2	-	02	-
108	UNIT #1 LIVING ROOM	STAIRS 3	2'-7" X 7'-0"	SOLID CORE	TYPE 1	60 MIN	01	1
201, 801	HALLWAY	UNIT #2, #8 ENTRANCE	2'-10" X 7'-0"	SOLID CORE	TYPE 1	60 MIN	01	1
202, 802	UNIT #2, #8 KITCHEN	UNIT #2, #8 BATHROOM	3'-0" X 7'-0"	SOLID CORE	TYPE 3	-	03	-
203, 803	UNIT #2, #8 LIVING ROOM	UNIT #2, #8 CLOSET	4'-0" X 6'-8"	SOLID CORE	TYPE 2	-	02	-
700	HALLWAY	UNIT #7 ENTRANCE	2'-10" X 7'-0"	SOLID CORE	TYPE 1	60 MIN	01	1
701	UNIT #7 VESTIBULE	UNIT #7 BATHROOM	3'-0" X 7'-0"	SOLID CORE	TYPE 3	-	03	-
702	UNIT #7 VESTIBULE	UNIT #2 BEDROOM	3'-0" X 7'-0"	SOLID CORE	TYPE 3	-	03	-
703, 704	UNIT #1 BEDROOM 2	UNIT #1 BEDROOM 2 CLOSET	3'-0" X 6'-8"	SOLID CORE	TYPE 2	-	02	-
705	UNIT #7 LIVING ROOM	STAIRS 4	2'-7" X 7'-0"	SOLID CORE	TYPE 1	60 MIN	01	1
600	HALLWAY	UNIT #6 UNIT ENTRANCE	2'-10" X 7'-0"	SOLID CORE	TYPE 1	60 MIN	01	1
301, 901	HALLWAY	UNIT #3, #9 ENTRANCE	2'-10" X 7'-0"	SOLID CORE	TYPE 1	60 MIN	01	1
302, 902	UNIT #3, #9 VESTIBULE	UNIT #3, #9 BATHROOM	3'-0" X 7'-0"	SOLID CORE	TYPE 3	-	03	-
303, 903	UNIT #3, #9 VESTIBULE	UNIT #3, #9 BEDROOM	2'-8" X 7'-0"	SOLID CORE	TYPE 3	-	03	1 FOR 303, N/A FOR 903
304, 305, 904, 905	UNIT #3, #9 BEDROOM	UNIT #3, #9 BEDROOM CLOSET	4'-0" X 6'-8"	SOLID CORE	TYPE 2	-	02	-
306	UNIT #3 LIVING ROOM	STAIRS 3	2'-7" X 7'-0"	SOLID CORE	TYPE 1	60 MIN	01	1
906	UNIT #9 LIVING ROOM	STAIRS 4	2'-7" X 7'-0"	SOLID CORE	TYPE 1	60 MIN	01	1
401, 1001	HALLWAY	UNIT #4, #10 ENTRANCE	2'-10" X 7'-0"	SOLID CORE	TYPE 1	60 MIN	01	1
402, 1002	UNIT #4, #10 LIVING ROOM	UNIT #4, #10 BATHROOM	3'-0" X 6'-8"	SOLID CORE	TYPE 3	-	03	1
501, 1101	HALLWAY	UNIT #4, #10 ENTRANCE	2'-8" X 7'-0"	SOLID CORE	TYPE 1	60 MIN	01	1
502	UNIT #5 LIVING ROOM	STAIRS 3	2'-6" X 7'-0"	SOLID CORE	TYPE 1	60 MIN	01	1
1102	UNIT #11 LIVING ROOM	STAIRS 4	2'-6" X 7'-0"	SOLID CORE	TYPE 1	60 MIN	01	1
403, 1003	UNIT #4, #10 HALLWAY	UNIT #4, #10 ENTRANCE	3'-0" X 7'-0"	SOLID CORE	TYPE 1	60 MIN	01	-

GENERAL DOOR SCHEDULE NOTES:
ALL PUBLIC EXIT DOOR HANDLES TO BE ADA COMPLIANT LEVER HANDLES.

DOOR SCHEDULE NOTES:
1. KEEP EXISTING WOOD FRAME

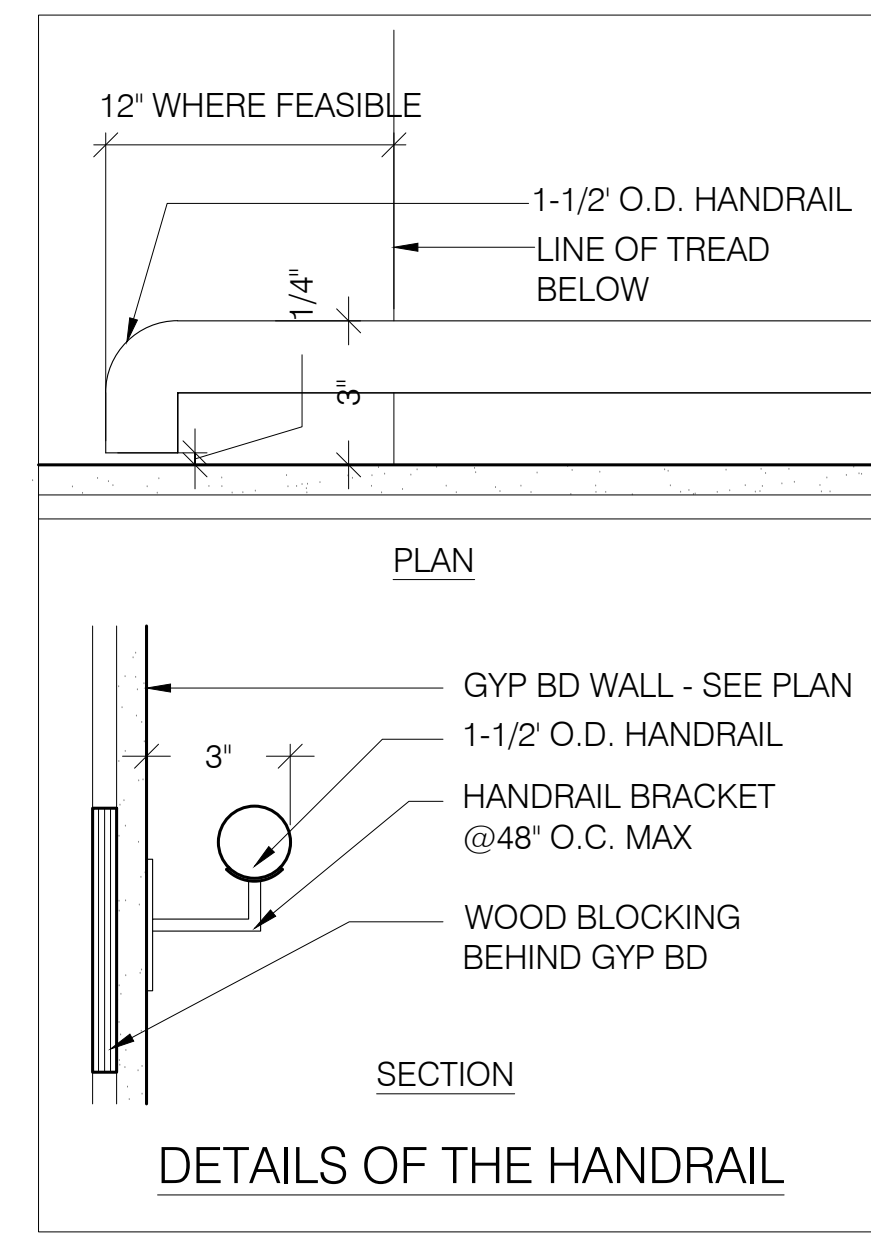
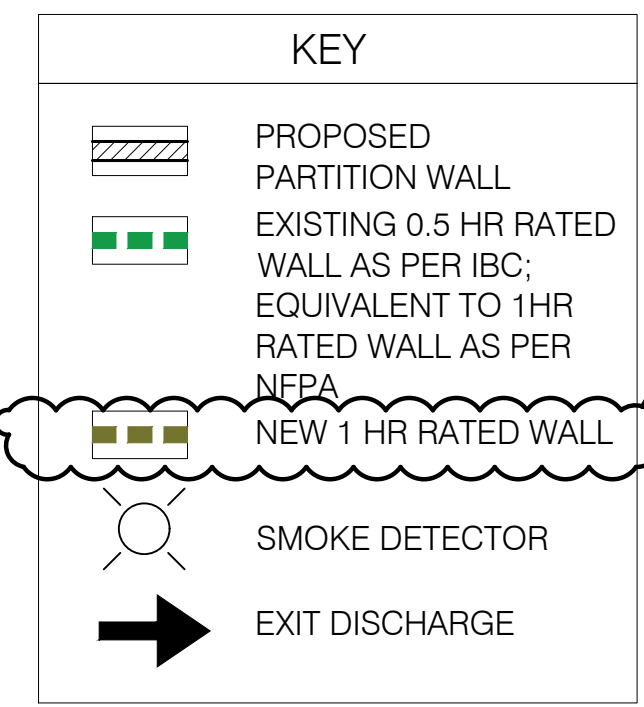
HARDWARE SETS:
01) UNIT ENTRY DOORS: PEEP HOLE, (3) HINGES, SOFT CLOSE DAMPER, STRIKE, DOOR STOP, SINGLE CYLINDER DEADBOLT, LOCKSET, THROW-BOLT, LATCH ASSEMBLY, LEVER, DOOR CHIME ON
02) CLOSET DOORS: (3) HINGES, PASSAGE LOCKSET
03) BEDROOM & BATH DOORS: (3) HINGES, PRIVACY LOCKSET, CORES



GENERAL NOTES:

- A. CARE SHALL BE TAKEN BY THE CONTRACTOR TO PROTECT EXISTING SYSTEMS AND SURFACES TO REMAIN. ALL DAMAGE RESULTING FROM THE CONTRACTOR'S OPERATIONS SHALL BE REPAIRED OR REPLACED AS APPROVED BY THE ARCHITECT AT NO ADDITIONAL COST TO THE OWNER.
- B. WHERE REMOVALS OCCUR, PATCH HOLES AND AREAS OF MISSING FINISH (IE EXPOSED STUD AREAS WHERE WALLS ARE REMOVED, FLOOR FINISHES, ETC. TO MATCH EXISTING ADJACENT SURFACE). PROVIDE A SMOOTH CONTINUOUS SURFACE FREE OF SHADOW LINES.
- C. FINAL FINISHES TO BE SELECTED BY OWNER.
- D. CLEAN AND PREPARE SURFACES TO RECEIVE NEW FINISHES. PAINT ALL EXISTING AND NEW EXPOSED SURFACES INCLUDING GYPSUM WALLBOARD AT FLOORS AND CEILINGS, TRIM, RAILINGS, ETC.
- E. ALL HEADERS IN 2X6 BEARING WALLS ARE (2) 2X6 NO.1 GRADE SPF MIN, UNLESS NOTED OTHERWISE.

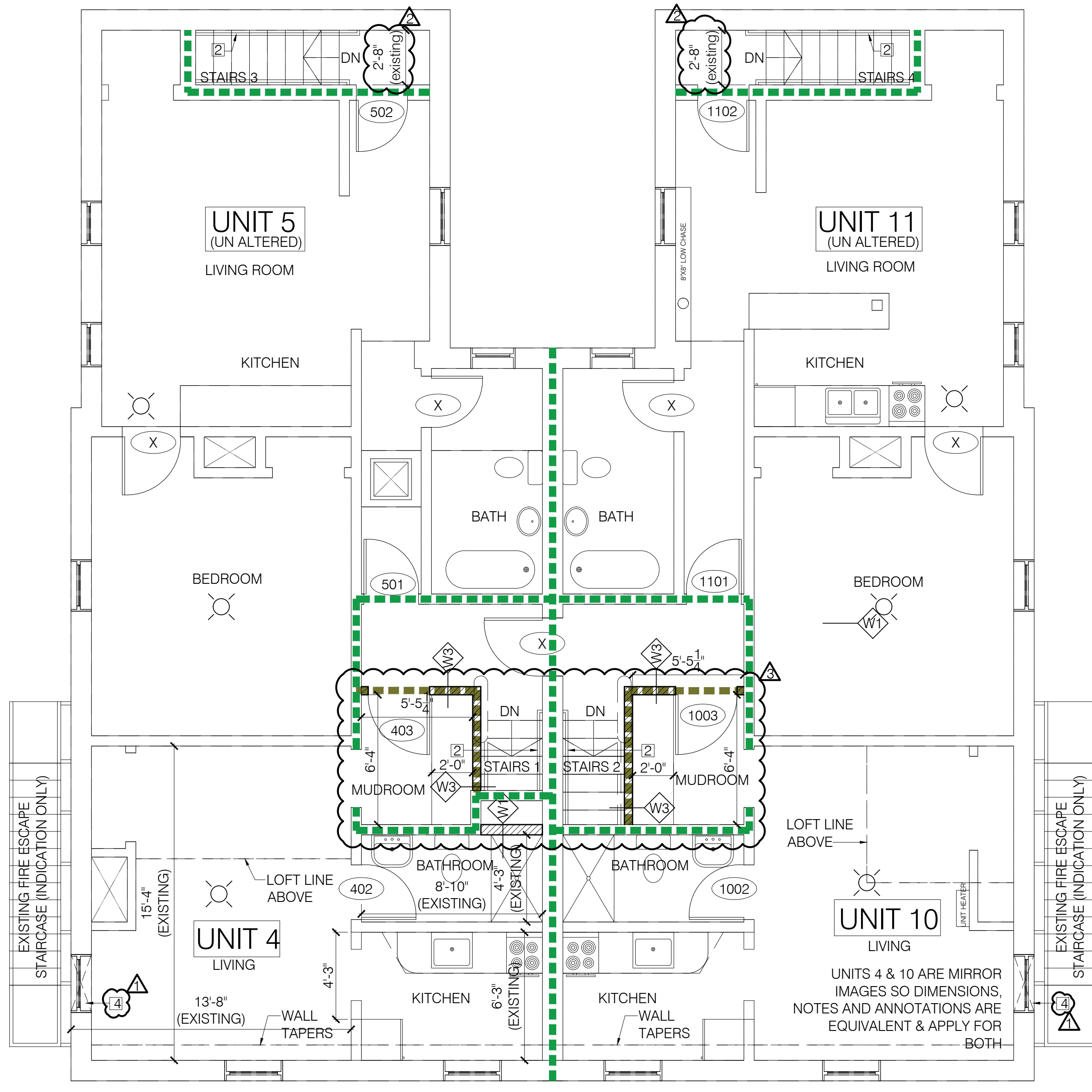
- 1. EXISTING 24" HAND RAIL.
- 2. 1 1/2" DIA PROPOSED HANDRAIL @ 36" ABOVE FF.
- 3. EXISTING WINDOW, CLEAR OPENING FOR EGRESS IS 31" H X 31" W.
- 4. EXISTING WINDOW, CLEAR OPENING FOR EGRESS IS 23" H X 27" W.
- 5. CONTRACTOR OPTIONS FOR LVLS DROPPED BELOW EXISTING FRAMING WITH ENDS SUPPORTED ON STUD PACK FOR FULL DEPTH OF WALL FRAMING:
 - a. (3) OF 5 3/8" OR
 - b. (2) OF 7 1/4"



GRAPHIC DESCRIPTION		DESCRIPTION		
		1. 5/8" TYPE "X" GYPSUM BOARD FASTENED IN ACCORDANCE WITH UL ASSEMBLY. 2. 2X6 WOOD STUDS @ 16" O.C. 3. FRICTION FIT BETWEEN STUDS R-19 UNFACED FIBERGLASS INSULATION BATTS MEASURING 6-1/4" THICK AND 15-1/4" WIDE 4. 5/8" TYPE "X" GYPSUM BOARD FASTENED IN ACCORDANCE WITH UL ASSEMBLY. NOTES: • PROVIDE MOISTURE RESISTANT GWB AT BATHROOMS. • A BEAD OF ACOUSTICAL SEALANT SHALL BE APPLIED AROUND THE PARTITION PERIMETER FOR SOUND CONTROL. • SEE FINISH SCHEDULE FOR WALL FINISH MATERIAL AND SUBSTRATE REQUIREMENTS		
		TYPE	WOOD PARTITION WALL	
W2	FIRE RATING	UL NUMBER	STC RATING	R-VALUE
	1-HR	U305	56	N/A

GRAPHIC DESCRIPTION		DESCRIPTION		
		1. 5/8" TYPE "X" GYPSUM BOARD FASTENED IN ACCORDANCE WITH UL ASSEMBLY. 2. 2X4 WOOD STUDS @ 16" O.C. 3. FRICTION FIT BETWEEN STUDS R-19 UNFACED FIBERGLASS INSULATION BATTS MEASURING 3-1/2" THK. 4. 5/8" TYPE "X" GYPSUM BOARD FASTENED IN ACCORDANCE WITH UL ASSEMBLY. NOTES: • A BEAD OF ACOUSTICAL SEALANT SHALL BE APPLIED AROUND THE PARTITION PERIMETER FOR SOUND CONTROL. • SEE FINISH SCHEDULE FOR WALL FINISH MATERIAL AND SUBSTRATE REQUIREMENTS		
		TYPE	WOOD PARTITION WALL	
W3	FIRE RATING	UL NUMBER	STC RATING	R-VALUE
	1-HR	U305	56	N/A

GRAPHIC DESCRIPTION		DESCRIPTION		
		1. 5/8" TYPE "X" GYPSUM BOARD FASTENED IN ACCORDANCE WITH UL ASSEMBLY. 2. 2X4 WOOD STUDS @ 16" O.C. 3. 5/8" TYPE "X" GYPSUM BOARD FASTENED IN ACCORDANCE WITH UL ASSEMBLY. NOTES: • PROVIDE MOISTURE RESISTANT GWB AT BATHROOMS. • A BEAD OF ACOUSTICAL SEALANT SHALL BE APPLIED AROUND THE PARTITION PERIMETER FOR SOUND CONTROL. • SEE FINISH SCHEDULE FOR WALL FINISH MATERIAL AND SUBSTRATE REQUIREMENTS		
		TYPE	WOOD PARTITION WALL	
W1	FIRE RATING	UL NUMBER	STC RATING	R-VALUE
	N/A	N/A	N/A	N/A



1 THIRD FLOOR PLAN
SCALE: 1/4" = 1'-0"