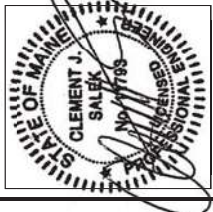


T-Mobile
 T-MOBILE NORTHEAST, LLC
 NORTON, MA 02766
 (508) 298-2700

CROWN CASTLE
 655 WEST CANNONS PARK, SUITE 3000
 ROSMERY, MA 01930
 (818) 970-0022

CHAPPELL ENGINEERING ASSOCIATES, LLC
Civil/Structural/Land Surveying
 P.O. EXECUTIVE CENTRE
 100 BOSTON ROAD, SUITE 101
 WEST, WEST, MA 01922
 (508) 481-7400
 www.chappellingengineering.com



THESE DOCUMENTS ARE THE SOLE PROPERTY OF T-MOBILE AND MAY NOT BE REPRODUCED, DISSEMINATED OR REDISTRIBUTED WITHOUT THE WRITTEN CONSENT OF T-MOBILE.

CHECKED BY: JMT
 APPROVED BY: JMT

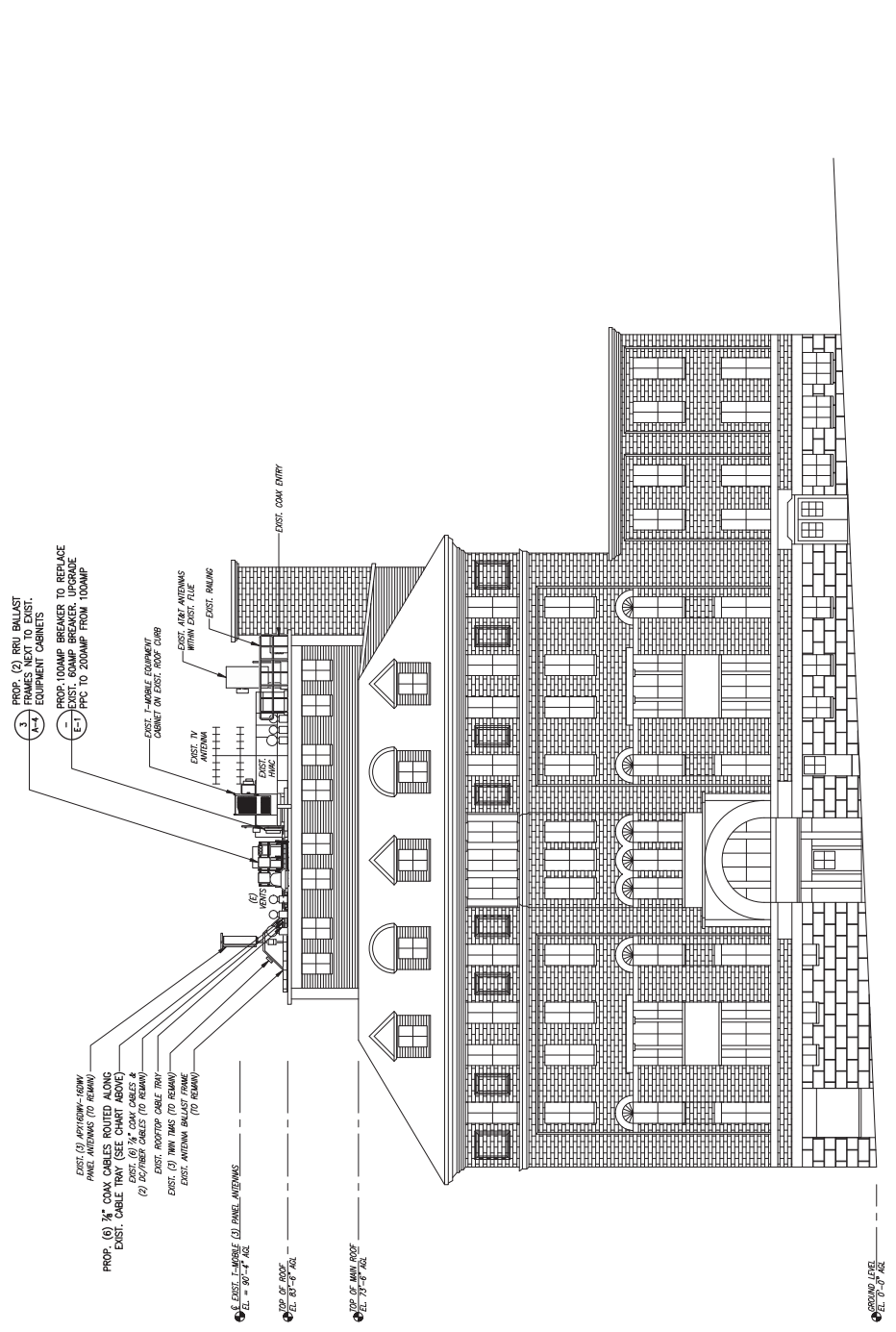
REV.	DATE	DESCRIPTION	BY
5	10/11/17	CONSTRUCTION PERSED	CAC
4	09/26/17	CONSTRUCTION PERSED	CAC
3	09/27/17	CONSTRUCTION PERSED	CAC
2	09/07/17	CONSTRUCTION FINAL	CAC
1	08/29/17	ISSUED FOR CONSTRUCTION	CAC
0	04/26/17	ISSUED FOR REVIEW	BJP

SITE NUMBER:
 4DN2285D
 SITE NAME:
 ME285/HOLT HALL
 SITE ADDRESS:
 784 CONGRESS STREET
 PORTLAND, ME 04102

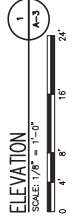
SHEET TITLE
 ELEVATION

SHEET NUMBER
 A-3

COAX CHART		
EXISTING CONFIGURATION	PROPOSED CONFIGURATION	FINAL CONFIGURATION
ALPHA (2) 1/2" COAX CABLES	(2) 1/2" COAX CABLES	(4) 1/2" COAX CABLES
BETA (2) 1/2" COAX CABLES	(2) 1/2" COAX CABLES	(4) 1/2" COAX CABLES
GAMMA (2) 1/2" COAX CABLES	(2) 1/2" COAX CABLES	(4) 1/2" COAX CABLES



RRU NOTE
 CONTAIN FINAL NUMBER OF FINAL RF DATA SHEET, (IF REQUIRED)



ELEVATION
 SCALE 1/8" = 1'-0"

1502285