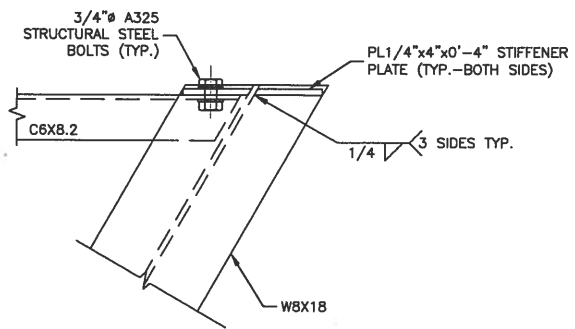
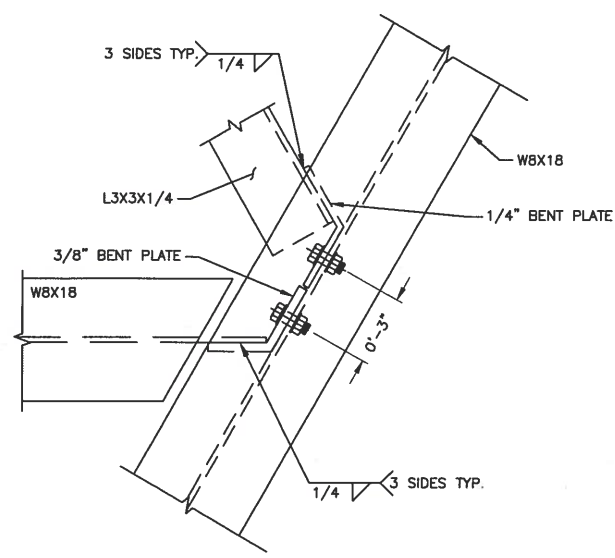


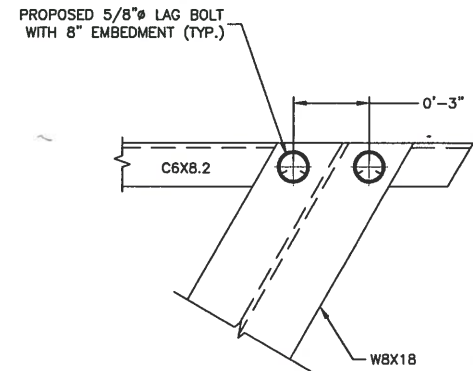
W8 TO W8 CONNECTION DETAIL
 SCALE: 1 1/2"=1' FOR 11"x17"
 3"=1' FOR 22"x34"
 0' 3" 6" 9"



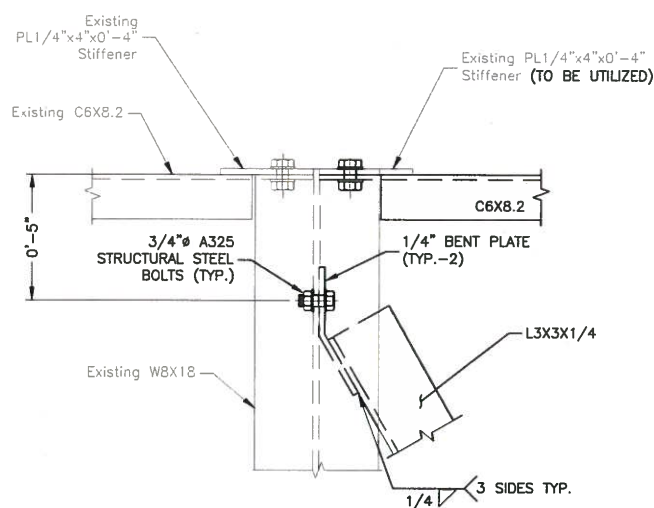
C6 TO W8 CONNECTION DETAIL
 SCALE: 1 1/2"=1' FOR 11"x17"
 3"=1' FOR 22"x34"
 0' 3" 6" 9"



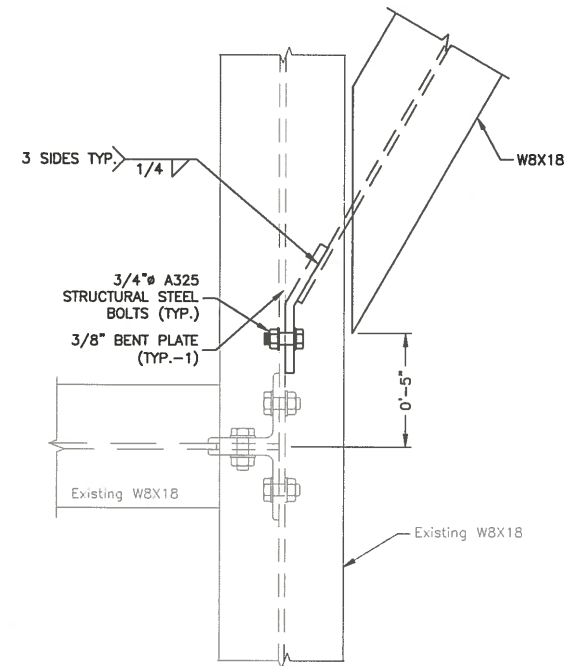
CONNECTION DETAIL
 SCALE: 1 1/2"=1' FOR 11"x17"
 3"=1' FOR 22"x34"
 0' 3" 6" 9"



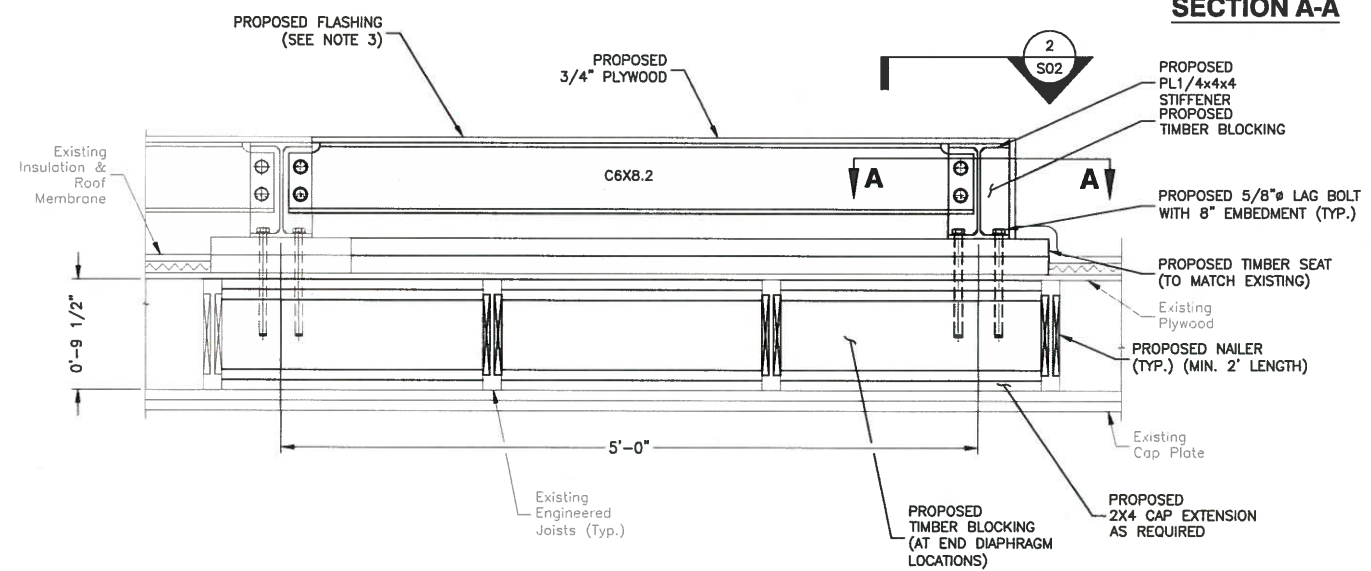
SECTION A-A



CONNECTION AT EXISTING FRAME
 SCALE: 1 1/2"=1' FOR 11"x17"
 3"=1' FOR 22"x34"
 0' 3" 6" 9"



W8 TO W8 SKEWED CONNECTION DETAIL
 SCALE: 1 1/2"=1' FOR 11"x17"
 3"=1' FOR 22"x34"
 0' 3" 6" 9"



END DIAPHRAGM SECTION
 SCALE: 3/4"=1' FOR 11"x17"
 1 1/2"=1' FOR 22"x34"
 0' 1/2' 1' 1 1/2'

- NOTES:**
- SOME EXISTING AND PROPOSED INFORMATION NOT SHOWN FOR CLARITY.
 - ANTENNA AND MOUNTING FRAME TO BE INSTALLED ACCORDING TO STRUCTURAL ANALYSIS ISSUED BY DEWBERRY ENGINEERS INC. DATED 05-17-16.
 - PROPOSED MOUNTING CURB TO BE FLASHED AND WEATHERPROOFED. ALL ROOF WORK SHALL ADHERE TO EXISTING ROOF WARRANTIES AND BE COMPLETED BY LL APPROVED ROOFER.
 - CONTRACTOR SHALL VERIFY DIMENSIONS OF PROPOSED FEATURES PRIOR TO FABRICATION AND CONSTRUCTION.

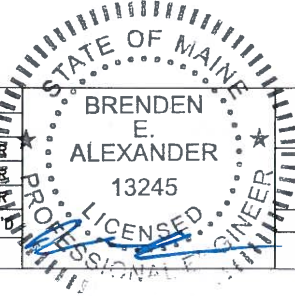
Dewberry
 Dewberry Engineers Inc.
 280 SUMMER ST.
 10TH FLOOR
 BOSTON, MA 02210
 PHONE: 617.665.3400
 FAX: 617.665.3310

SAI
 27 NORTHWESTERN DRIVE
 SALEM, NH 03079

HOLT HALL
 SITE NO. ME5091 LTE 3C/4C
 794 CONGRESS STREET
 PORTLAND, ME 04102

at&t
 Mobility
 550 COCHITUATE ROAD
 SUITES 13 & 14
 FRAMINGHAM, MA 01701

2	05/20/16	ISSUED FOR CONSTRUCTION	CDH	DAS	BBB
1	05/17/16	ISSUED FOR REVIEW	CDH	DAS	BBB
0	03/25/16	ISSUED FOR REVIEW	SK	CDH	BBB
NO.	DATE	REVISIONS	BY	CHK	APP'D
SCALE: AS SHOWN		DESIGNED BY: CDH	DRAWN BY: JG		



AT&T MOBILITY
 FRAMINGHAM, MA 01701

CONNECTION DETAILS

DEWBERRY NO.	DRAWING NUMBER	REV
50019239/50066401	S02	2