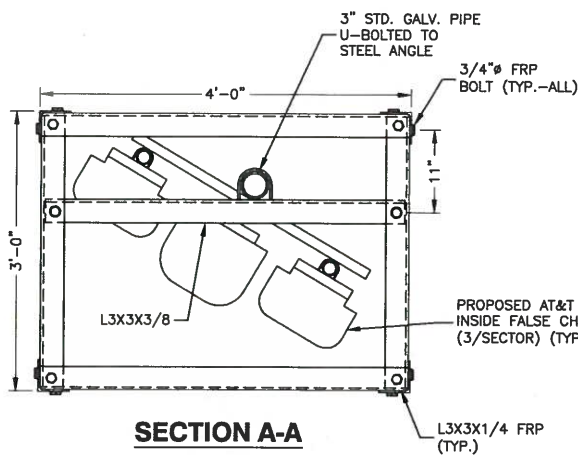
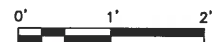
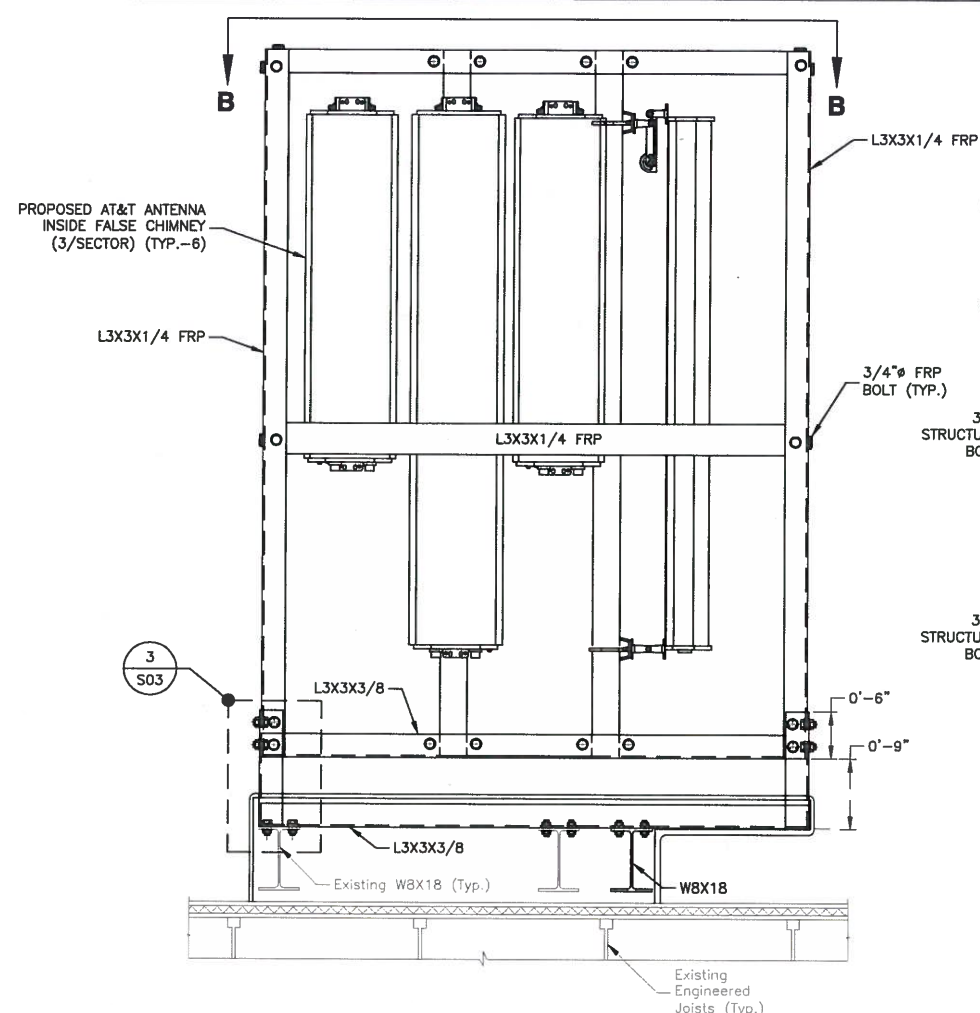


BETA SECTOR FALSE CHIMNEY PLAN & ELEVATION

SCALE: 1/2"=1' FOR 11"x17"
1"=1' FOR 22"x34"

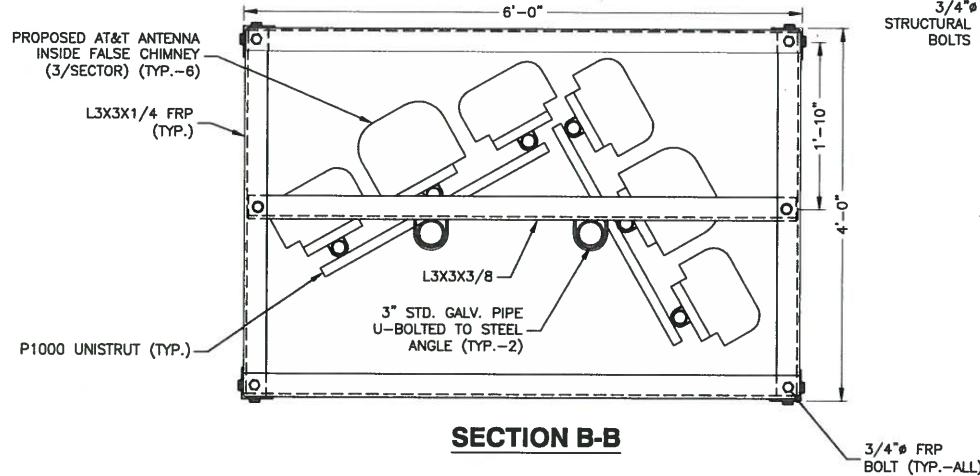
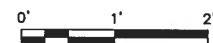


SECTION A-A

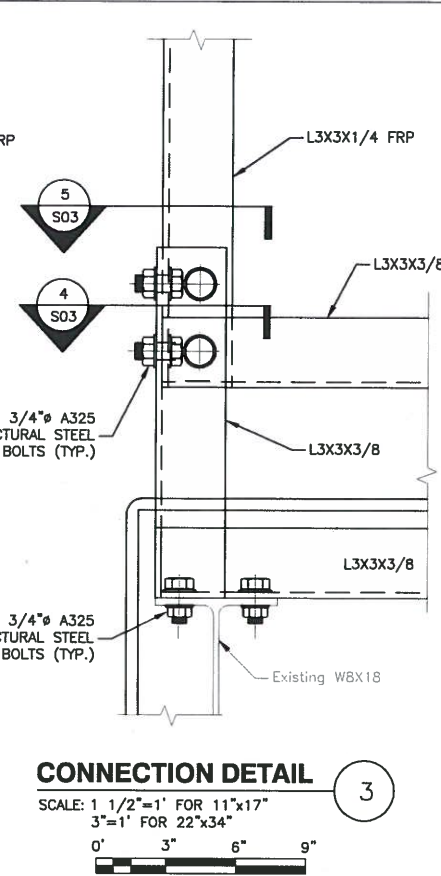


ALPHA & GAMMA SECTORS FALSE CHIMNEY PLAN & ELEVATION

SCALE: 1/2"=1' FOR 11"x17"
1"=1' FOR 22"x34"

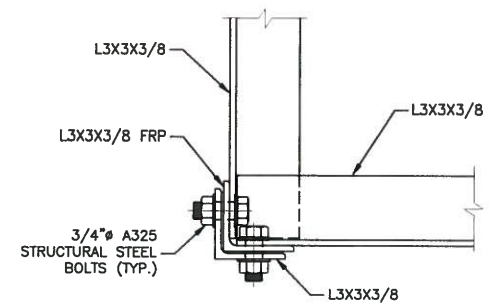
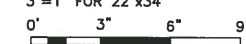


SECTION B-B



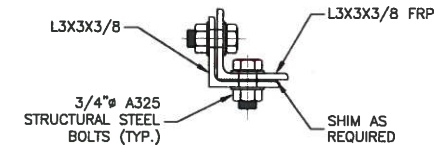
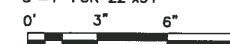
CONNECTION DETAIL 3

SCALE: 1 1/2"=1' FOR 11"x17"
3"=1' FOR 22"x34"



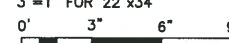
VERTICAL AND HORIZONTAL ANGLE CONNECTION DETAIL 4

SCALE: 1 1/2"=1' FOR 11"x17"
3"=1' FOR 22"x34"



VERTICAL ANGLE CONNECTION DETAIL 5

SCALE: 1 1/2"=1' FOR 11"x17"
3"=1' FOR 22"x34"



FIBERGLASS NOTES:

- CHIMNEYS SHALL BE PAINTED TO MATCH RANGE OF COLORS OF THE BUILDING FACADE. SUBMIT SAMPLES TO LANDLORD AND CITY OF SOMERVILLE FOR APPROVAL.
- FRP (FIBERGLASS REINFORCED POLYMER) STRUCTURAL SHAPES SHALL BE MANUFACTURED USING THE PULTRUSION PROCESS.
- IF PRE-FABRICATED MEMBERS DO NOT ASSEMBLE ACCORDING TO PLAN, CONTACT DUROFIBER BEFORE CUTTING OR ALTERING FABRICATED MEMBERS.
- FRP MEMBERS SHALL BE FABRICATED AND ASSEMBLED AS INDICATED ON THE DRAWINGS.
- THE CONTRACTOR SHALL PROTECT THE FRP STRUCTURAL MEMBERS FROM ABUSE TO PREVENT BREAKAGE, NICKS, GOUGES, ETC. DURING FABRICATION, HANDLING, AND INSTALLATION.
- FRP BOLTS SHOULD BE TIGHTENED 1/2 TURN PAST SNUG AND LOCKED WITH EPOXY.
- FIBERGLASS TO MEET ALL AT&T STANDARDS FOR RF PROPAGATION. PROVIDE TEST REPORTS TO AT&T FOR REVIEW & APPROVAL.
- STRUCTURAL FRP SHALL HAVE THE MINIMUM MECHANICAL PROPERTIES:
E=2800PSI
TENSILE STRENGTH(LW): 33KSI
COMPRESSIVE STRENGTH(LW): 33 KSI
FLEXURAL STRENGTH(LW): 33KSI
DENSITY: 104-121PCF
- FIBERGLASS PANEL DESIGN & CONNECTION DESIGN TO BE BY OTHERS.
- PROVIDE ANTENNA ACCESS PANEL BEHIND ANTENNAS.

NOTES:

- SOME EXISTING AND PROPOSED INFORMATION NOT SHOWN FOR CLARITY.
- ANTENNA AND MOUNTING FRAME TO BE INSTALLED ACCORDING TO STRUCTURAL ANALYSIS ISSUED BY DEWBERRY ENGINEERS INC., DATED 05-16-16.
- PROPOSED MOUNTING CURB TO BE FLASHED AND WEATHERPROOFED. ALL ROOF WORK SHALL ADHERE TO EXISTING ROOF WARRANTIES AND BE COMPLETED BY LL APPROVED ROOFER.
- CONTRACTOR SHALL VERIFY DIMENSIONS OF PROPOSED FEATURES PRIOR TO FABRICATION AND CONSTRUCTION.
- ALL FRP ANGLE TO FRP ANGLE CONNECTIONS TO BE BOLTED WITH FRP BOLTS.

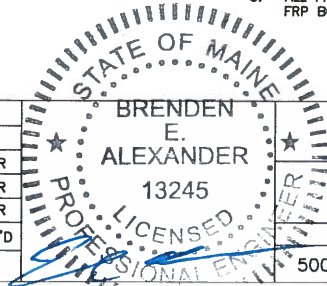
Dewberry
Dewberry Engineers Inc.
280 SUMMER ST.
10TH FLOOR
BOSTON, MA 02210
PHONE: 617.665.3400
FAX: 617.665.3310

SAI
27 NORTHWESTERN DRIVE
SALEM, NH 03079

**HOLT HALL
SITE NO. ME5091 LTE 3C/4C**
794 CONGRESS STREET
PORTLAND, ME 04102

**at&t
Mobility**
550 COCHITUATE ROAD
SUITES 13 & 14
FRAMINGHAM, MA 01701

NO.	DATE	REVISIONS	BY	CHK	APP'D
2	05/20/16	ISSUED FOR CONSTRUCTION	CDH	DAS	BBR
1	05/17/16	ISSUED FOR REVIEW	CDH	DAS	BBR
0	03/25/16	ISSUED FOR REVIEW	SK	CDH	BBR
SCALE: AS SHOWN		DESIGNED BY: CDH	DRAWN BY: JG		



**AT&T MOBILITY
FRAMINGHAM, MA 01701**
FIBERGLASS CHIMNEY DETAILS

DEWBERRY NO.	DRAWING NUMBER	REV
50019239/50066401	S03	2