

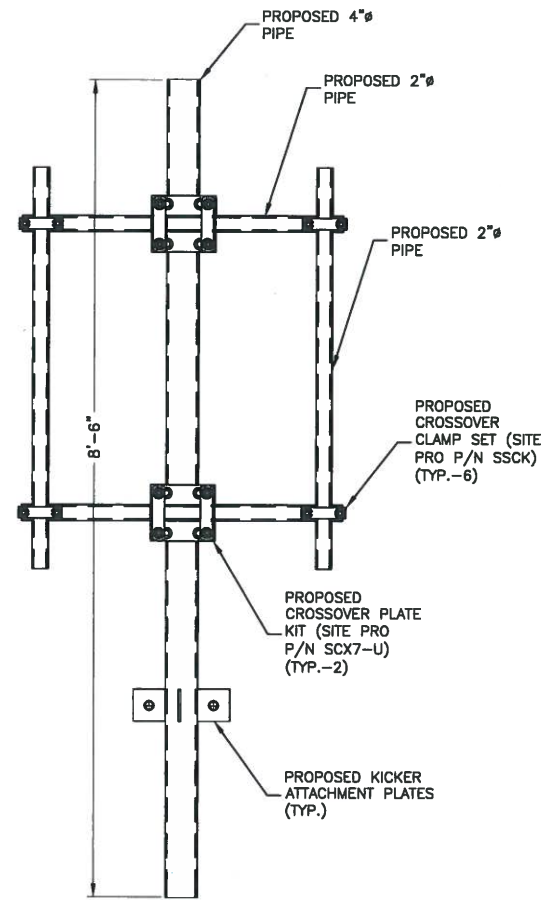
PROPOSED KICKER ORIENTATION PLAN

SCALE: 3/16"=1' FOR 11"x17"
3/8"=1' FOR 22"x34"



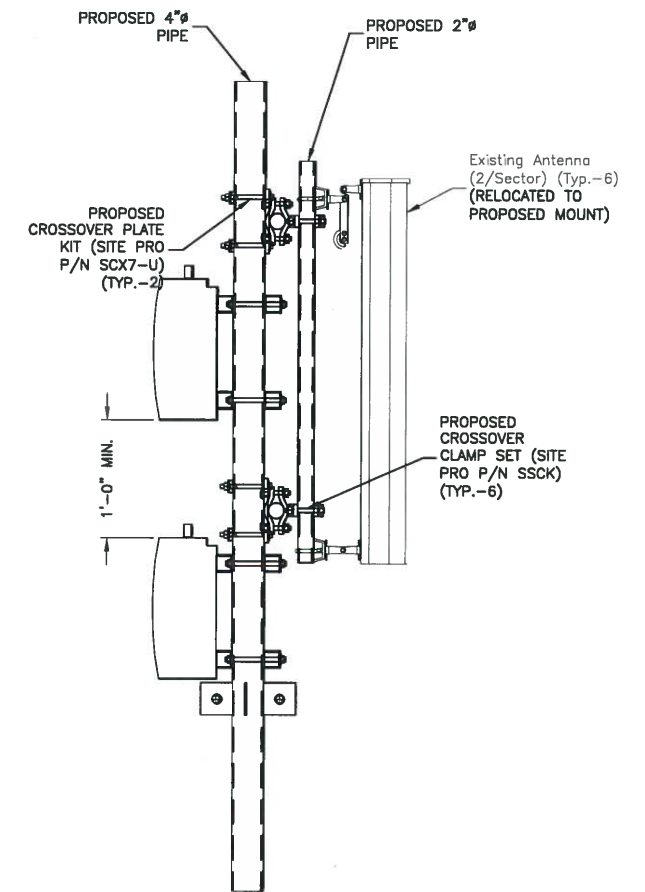
NOTES:

1. SOME EXISTING AND PROPOSED INFORMATION NOT SHOWN FOR CLARITY.
2. NORTH ARROW SHOWN AS APPROXIMATE.
3. ALL PROPOSED EQUIPMENT, ANTENNA INSTALLATION, AND FRAMING TO BE INSTALLED PER STRUCTURAL ANALYSIS BY DEWBERRY ENGINEERS INC., DATED 12-02-16.
4. ROUTE (1) FIBER & (2) DC CABLES TO ALPHA SECTOR & (2) FIBER & (4) DC CABLES TO BETA & GAMMA FROM EQUIPMENT ROOM IN BASEMENT TO ROOF. UTILIZE EXISTING SPARE CONDUITS.
5. ALL ANTENNAS AND SHALL BE PAINTED TO MATCH AND ALL CABLES SHALL BE NEATLY BUNDLED AND PAINTED TO MATCH.
6. DRAWINGS BASED ON EXISTING PLANS AND SITE VISIT BY DEWBERRY ENGINEERS INC.
7. PROPOSED MOUNTING CURB TO BE FLASHED AND WEATHERPROOFED. ALL ROOF WORK SHALL ADHERE TO EXISTING ROOF WARRANTIES AND BE COMPLETED BY LL APPROVED ROOFER.



PIPE MOUNTING

SCALE: 1/2"=2' FOR 11"x17"
1"=1' FOR 22"x34"



ANTENNA & RRU MOUNTING DETAIL

SCALE: 1/2"=1' FOR 11"x17"
1"=1' FOR 22"x34"



NOTES:

1. CENTER ANTENNA MOUNTING PIPE NOT SHOWN FOR CLARITY.
2. 4" PIPE BOTTOM ATTACHMENT NOT SHOWN FOR CLARITY. SEE DETAIL 2 ON SHEET S02.

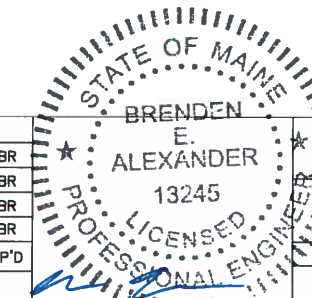
Dewberry
Dewberry Engineers Inc.
280 SUMMER ST.
10TH FLOOR
BOSTON, MA 02210
PHONE: 617.695.3400
FAX: 617.695.3310

SAI
27 NORTHWESTERN DRIVE
SALEM, NH 03079

HOLT HALL
SITE NO. ME5091 LTE 3C/4C
794 CONGRESS STREET
PORTLAND, ME 04102

at&t
Mobility
550 COCHITUATE ROAD
SUITES 13 & 14
FRAMINGHAM, MA 01701

3	12/07/16	ISSUED FOR CONSTRUCTION	CDH	DAS	BBR
2	05/20/16	ISSUED FOR CONSTRUCTION	CDH	DAS	BBR
1	05/17/16	ISSUED FOR REVIEW	CDH	DAS	BBR
0	03/25/16	ISSUED FOR REVIEW	JG	CDH	BBR
NO.	DATE	REVISIONS	BY	CHK	APP'D
SCALE: AS SHOWN			DESIGNED BY: CDH	DRAWN BY: JG	



AT&T MOBILITY
FRAMINGHAM, MA 01701

STRUCTURAL DETAILS I

DEWBERRY NO.	DRAWING NUMBER	REV
50019239/50066401	S01	3