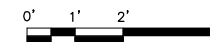
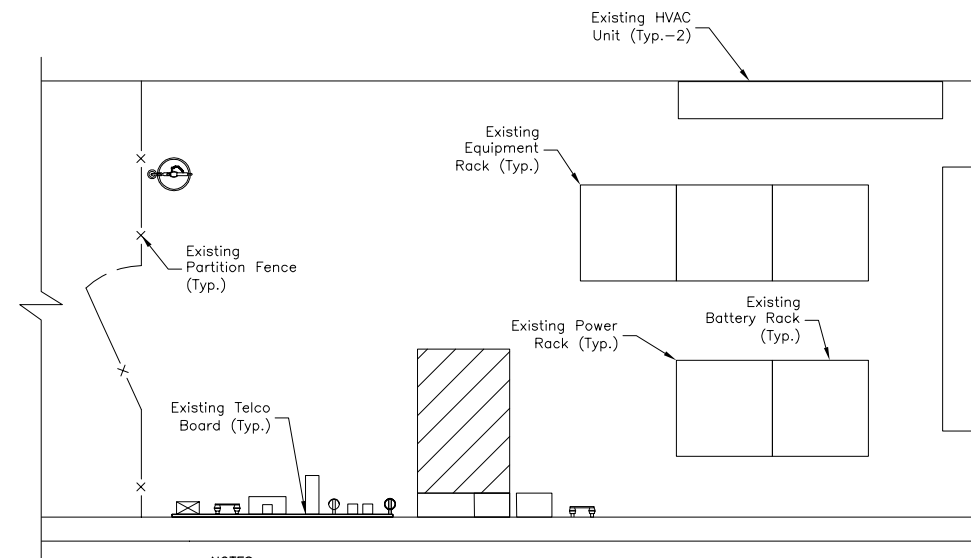
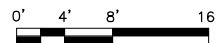
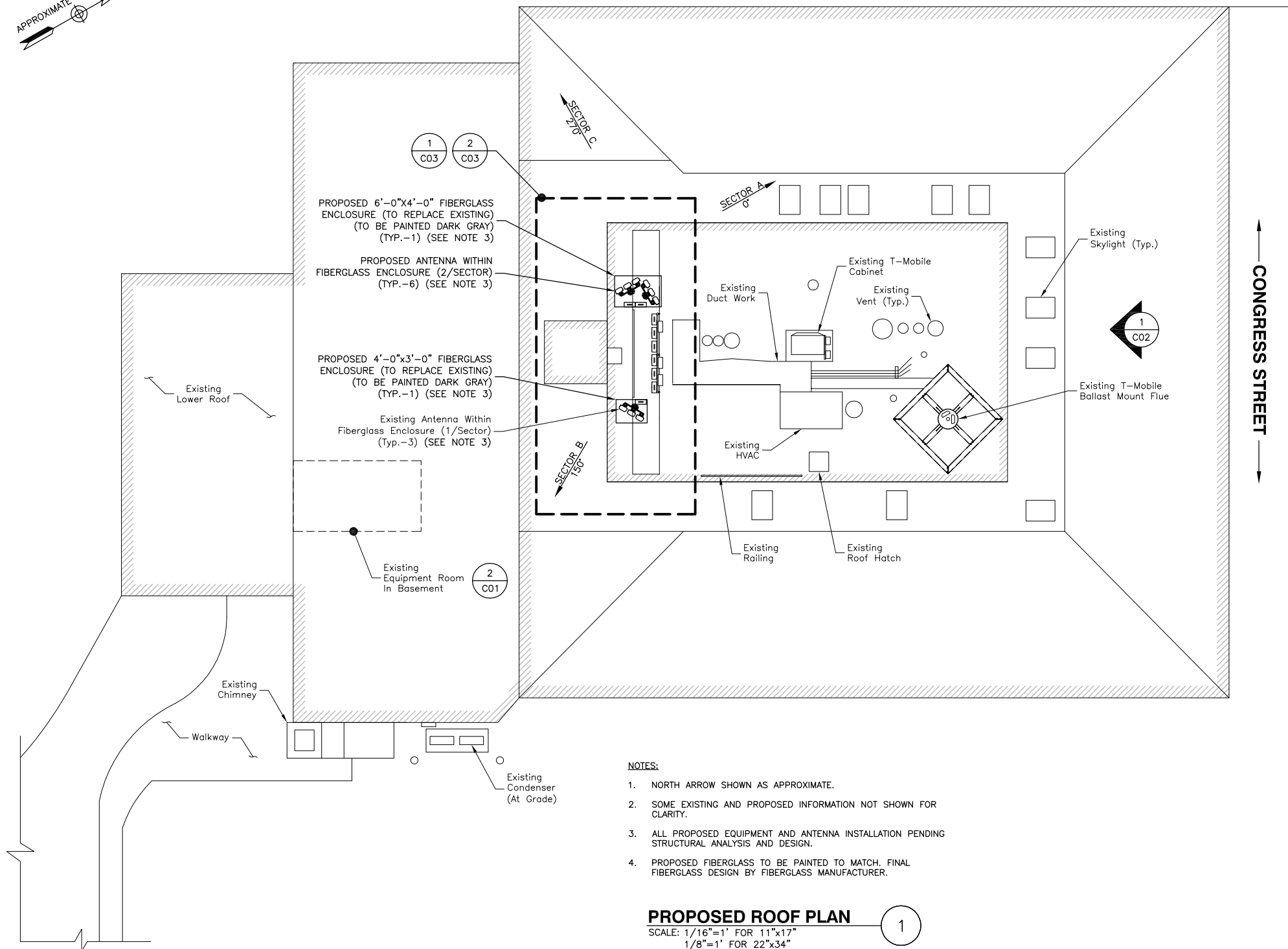


← BRAMHALL STREET →

↑ CONGRESS STREET ↓



Dewberry
 Dewberry Engineers Inc.
 280 SUMMER ST.
 10TH FLOOR
 BOSTON, MA 02210
 PHONE: 617.695.3400
 FAX: 617.695.3310

SAI
 27 NORTHWESTERN DRIVE
 SALEM, NH 03079

HOLT HALL
SITE NO. ME5091 LTE 3C/4C
 794 CONGRESS STREET
 PORTLAND, ME 04102

at&t
 Mobility
 550 COCHITUATE ROAD
 SUITES 13 & 14
 FRAMINGHAM, MA 01701

1	02/22/16	ISSUED FOR REVIEW	JG	CDH	BBR
0	12/22/16	ISSUED FOR REVIEW	JG	CDH	BBR
NO.	DATE	REVISIONS	BY	CHK	APP'D
SCALE: AS SHOWN		DESIGNED BY: CDH	DRAWN BY: JG		

AT&T MOBILITY FRAMINGHAM, MA 01701		
PROPOSED ROOF & EQUIPMENT PLANS		
DEWBERRY NO.	DRAWING NUMBER	REV
50019239/50066401	C01	1