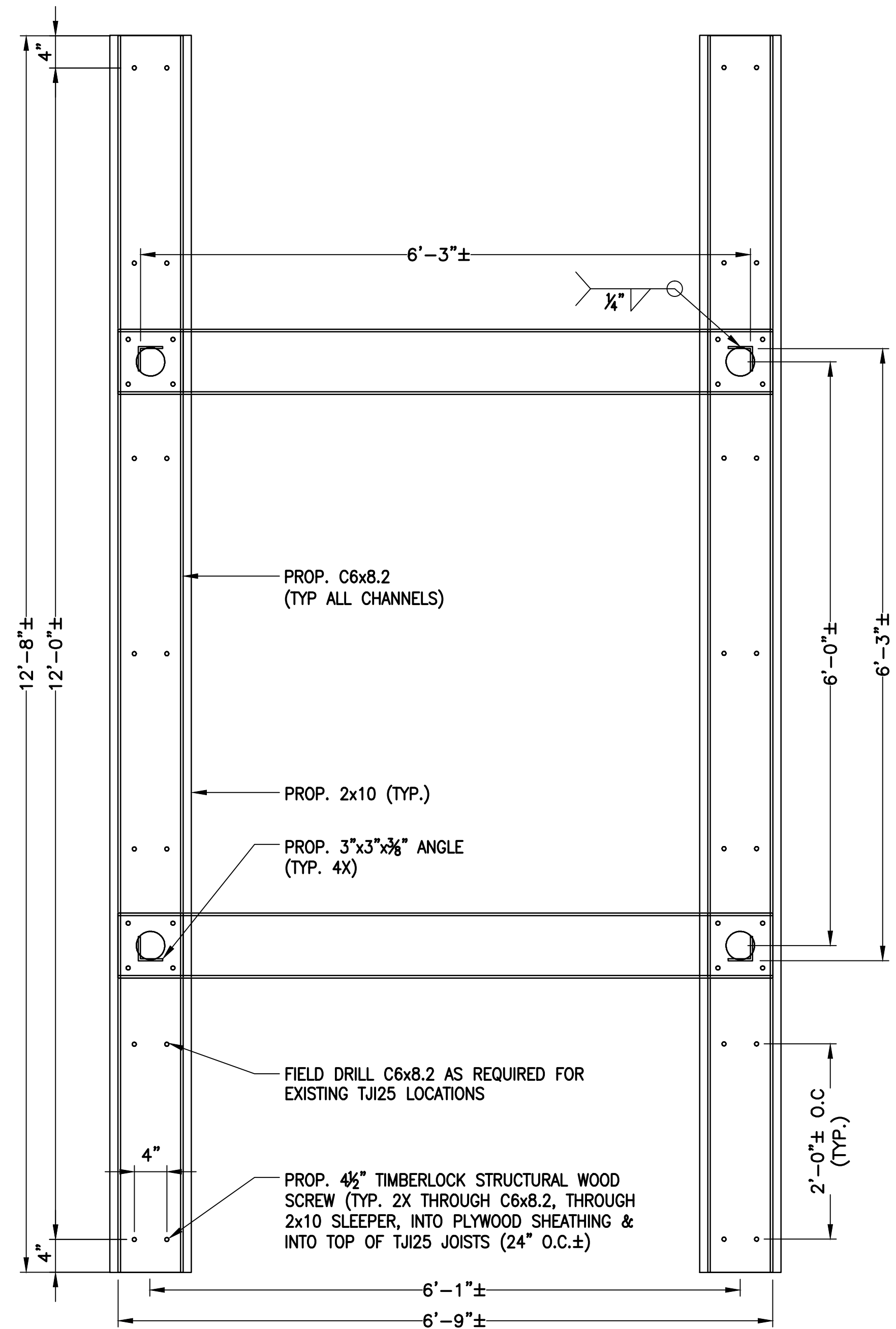
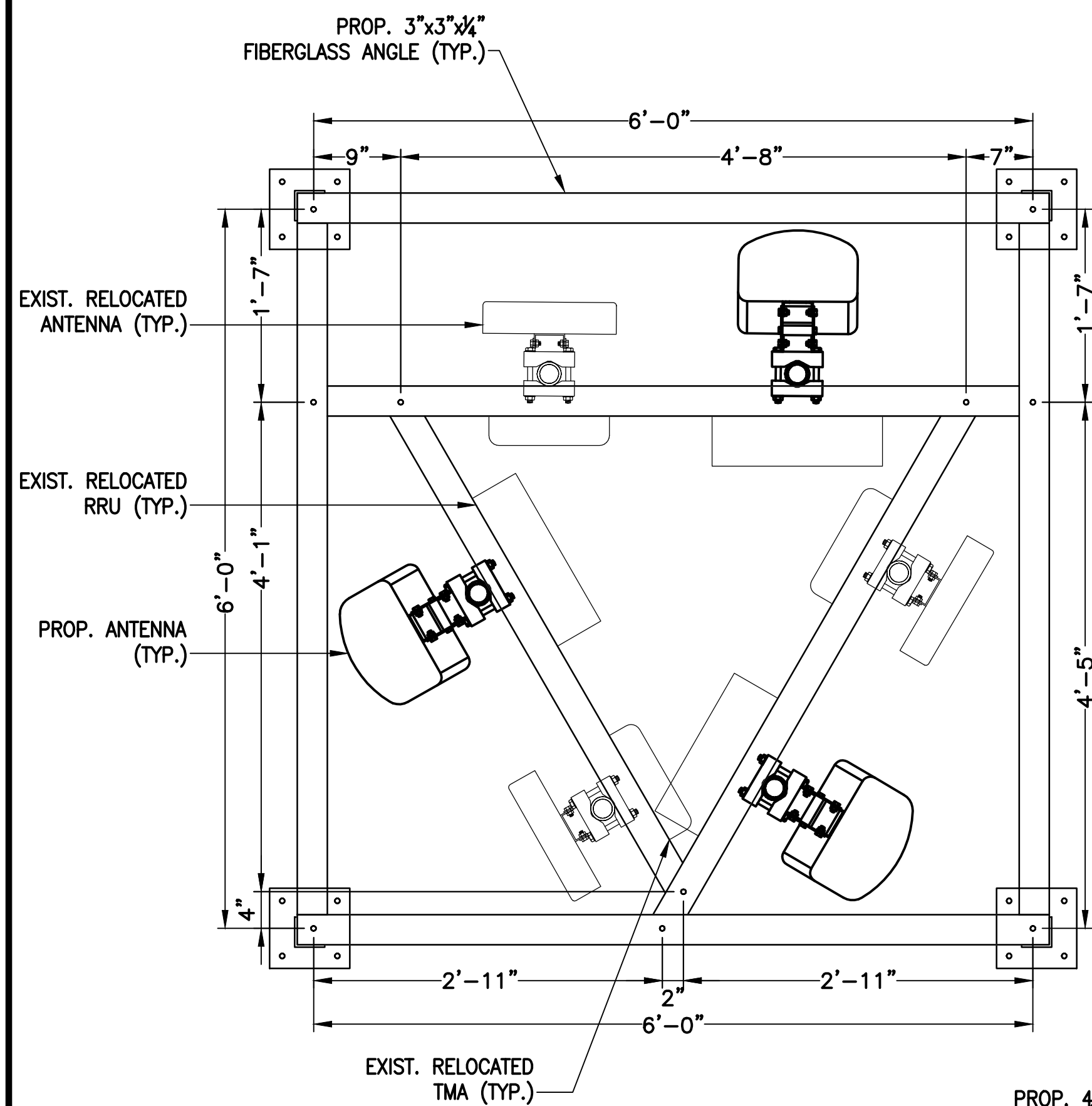


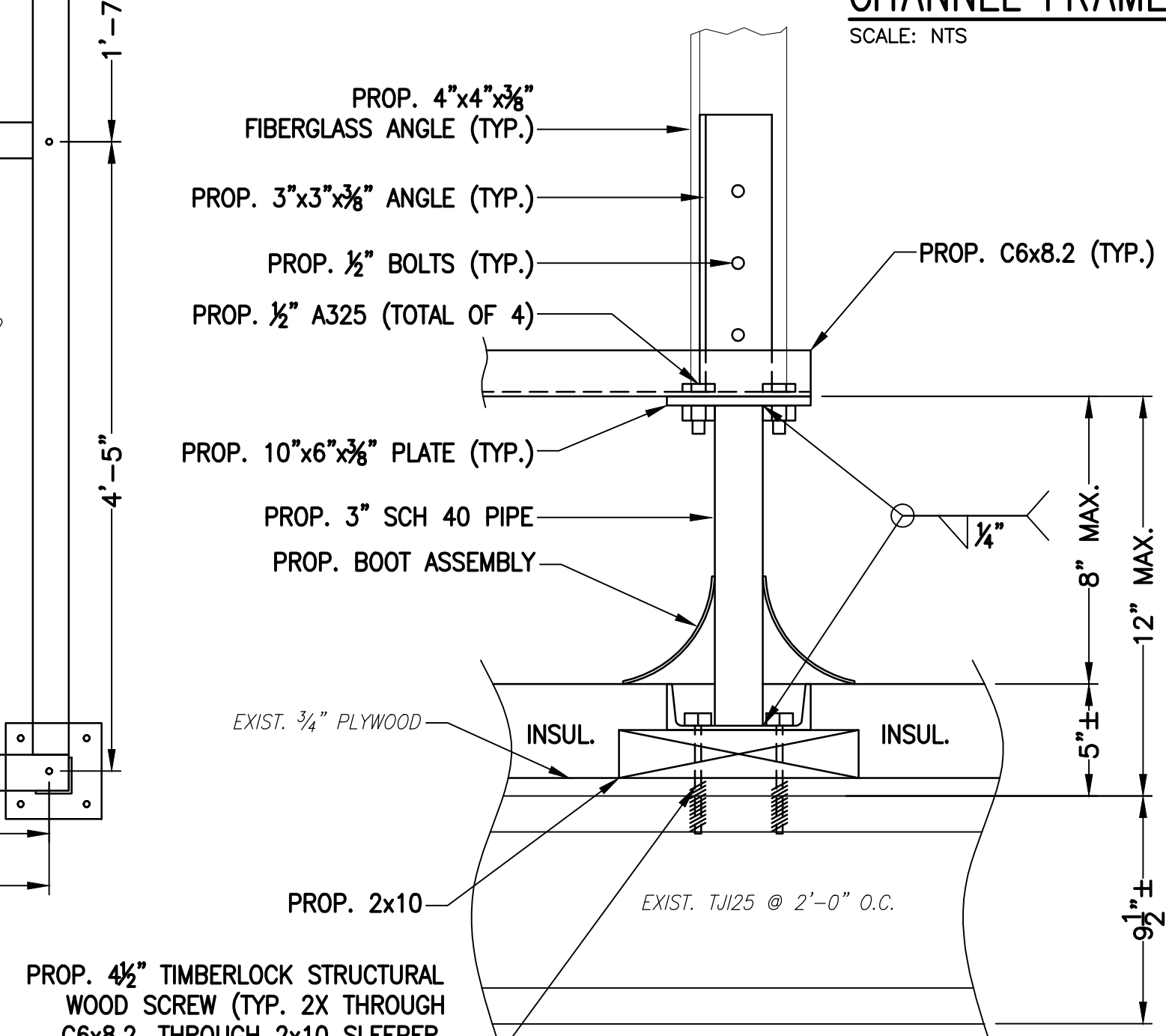
ANTENNA FRAME ISOMETRIC 1
SCALE: N.T.S. S-1



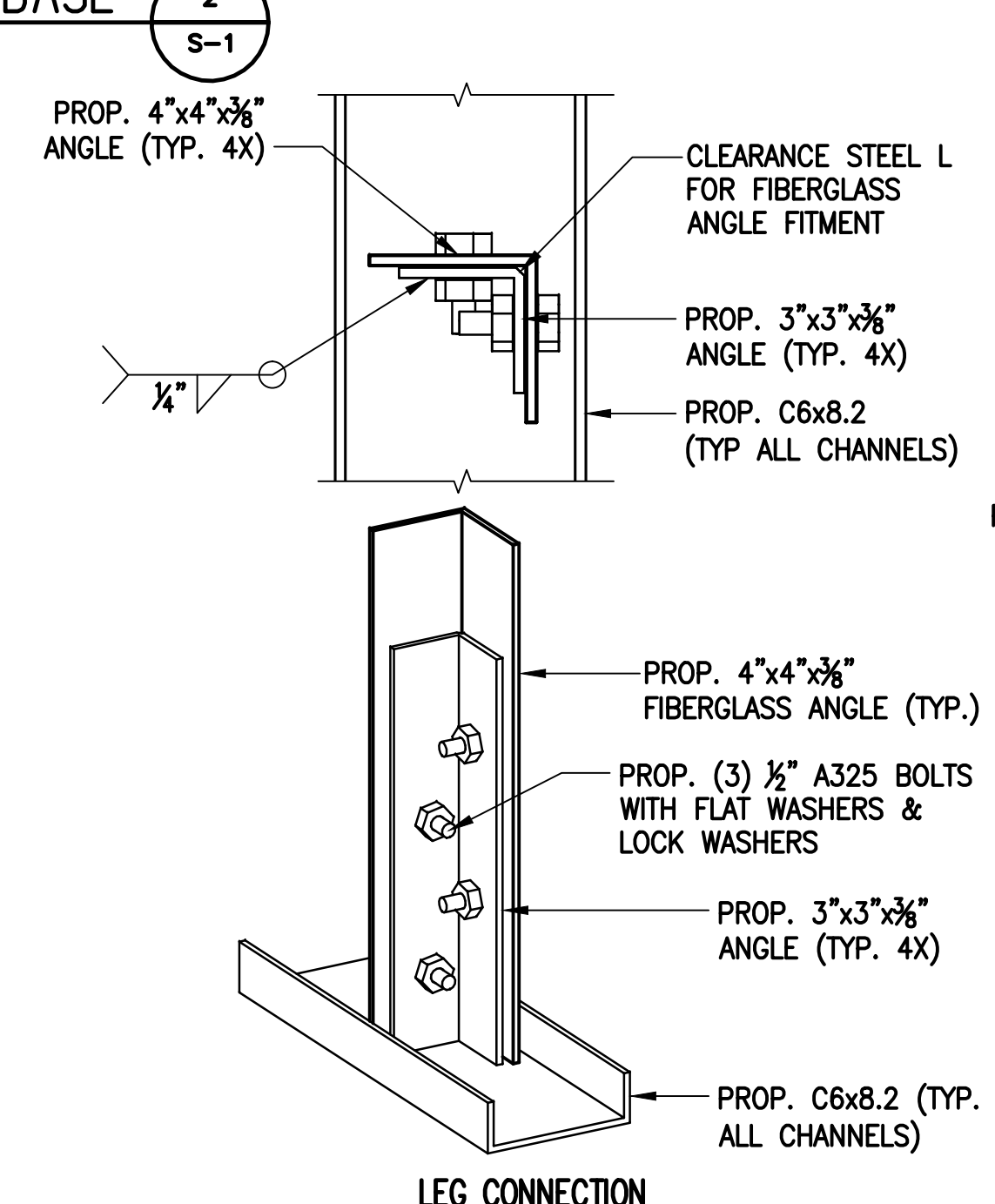
CHANNEL FRAME BASE 2
SCALE: N.T.S. S-1



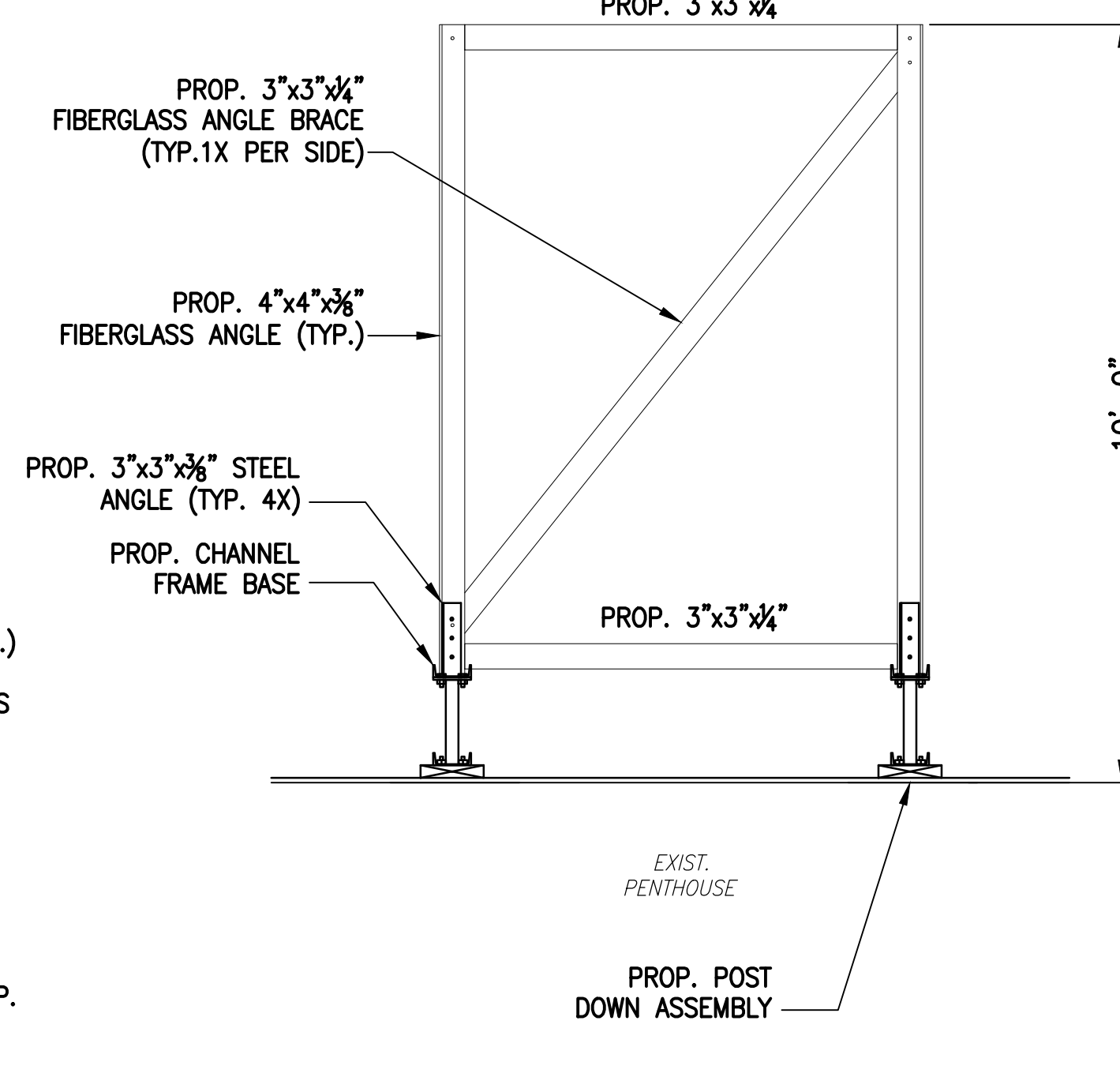
PENTHOUSE FRAMING PLAN 4
SCALE: N.T.S. S-1



POST DOWN ASSEMBLY DETAIL 6
SCALE: N.T.S. S-1



LEG CONNECTION ASSEMBLY DETAIL 5
SCALE: N.T.S. S-1



ANTENNA FRAME ELEVATION 3
SCALE: N.T.S. S-1

STEALTH SCREENING NOTES:

FRP STRUCTURAL MEMBERS:

- FRP STRUCTURAL SHAPES SHALL BE STEALTH FRP SERIES 1525 OR EQUAL, MANUFACTURED USING THE PULTRUSION PROCESS.
- IF PREFABRICATED MEMBERS DO NOT ASSEMBLE PER PLAN, CONTACT STEALTH CONCEALMENT SOLUTIONS, INC. BEFORE CUTTING OR ALTERING FABRICATED MEMBERS.
- FRP STRUCTURAL MEMBERS SHALL BE FABRICATED AND ASSEMBLED AS INDICATED ON THE DRAWINGS.
- THE CONTRACTOR SHALL PROTECT THE FRP STRUCTURAL MEMBERS FROM ABUSE TO PREVENT BREAKAGE, NICKS, COUGES, ETC. DURING FABRICATION, HANDLING, AND INSTALLATION.
- COAT ANY CUT OR DRILLED EDGES OF FRP STRUCTURAL MEMBERS WITH HETROLAC OR EQUIVALENT RESIN OR ACRYLIC SEALER.

RF PANELS PANELS:

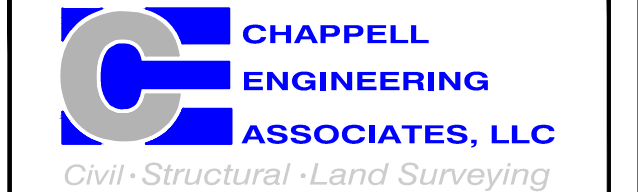
- FASTENER HOLES IN RF PANELS FOAM COMPOSITE PANELS ARE NOT FACTORY DRILLED AND MUST BE DRILLED IN THE FIELD.
- PANEL FASTENERS TO BE SPACED 18" O.C. MAX. AND LOCATED 6" MAX. HORIZONTALLY FROM EACH EDGE AT TOP AND BOTTOM OF PANEL. MAINTAIN 1/2" EDGE DISTANCE FROM ALL EDGES. 4" WIDE PANELS REQUIRE (3) FASTENERS TOP AND BOTTOM. 5" WIDE PANELS (4) FASTENERS TOP AND BOTTOM. CORNER PANELS REQUIRE (2) FASTENERS TOP AND BOTTOM PER SIDE.
- WHEN FASTENER BOLT HEAD OR NUT BEARS DIRECTLY ON SURFACE OF RF PANELS PANEL, TIGHTEN PANEL BOLTS ONLY 1/2 TURN PAST SNUG. APPLY THREAD LOCK COMPOUND TO THE THREADS OF METAL BOLTS. USE THIN BEAD OF EPOXY TO LOCK THE NUTS OF FRP BOLTS AND STEALTH STAINLESS STEEL PANEL BOLTS. USE WASHER OR FLANGED HEAD BOLT OR FASTENER WITH LARGE BEARING SURFACE.
- PANELS WILL EXPAND AND CONTRACT DUE TO TEMPERATURE. WHEN INSTALLING PANELS IN COLD TEMPERATURES, EVENLY SPACE PANELS ALONG LENGTH OF SCREEN WALL WITH EQUAL GAPS BETWEEN PANELS TO ALLOW FOR EXPANSION DURING WARM TEMPERATURES.
- ADJACENT FLAT PANELS ARE JOINED BY A VERTICAL FOAM SPLINE THAT IS INSERTED INTO GROOVES CUT INTO THE SIDES OF EACH PANEL. DO NOT LIFT PANELS BY GROOVES. PANELS MUST BE LIFTED WITH FORCE DIRECTED ONTO PANEL SURFACE.
- ADJACENT RADIUS PANELS ARE JOINED BY A VERTICAL H-CHANNEL. INSERT PANELS INTO EACH SIDE OF H-CHANNEL.
- RADIUS PANELS MUST BE EVENLY SPACED ALONG RADIUS SUPPORT. CONTRACTOR TO MEASURE LENGTH OF RADIUS SUPPORT AND DIVIDE BY THE NUMBER OF RADIUS PANELS TO DETERMINE PROPER SPACING. H-CHANNEL CONNECTORS ARE USED TO COVER THE GAP BETWEEN PANELS AND TO ALLOW FOR PANEL EXPANSION AND CONTRACTION.
- SURFACES OF PANELS SHALL BE COATED WITH SUITABLE PAINT FOR UV PROTECTION, TOP EDGE OF PANEL MUST BE COVERED TO PREVENT WATER TRAVEL BETWEEN PANELS. USE SHERWIN-WILLIAMS "COROTHANE II" OR PRE-APPROVED EQUIVALENT.
- EXPOSED TOP AND SIDE FOAM EDGES OF PANELS MUST BE COVERED OR COATED FOR UV PROTECTION. TOP EDGE OF PANEL MUST BE COVERED TO PREVENT WATER TRAVEL BETWEEN PANELS. MANUFACTURER SHALL PROVIDE PANEL EDGE CAPS TO BE FIELD APPLIED FOR THIS PURPOSE.



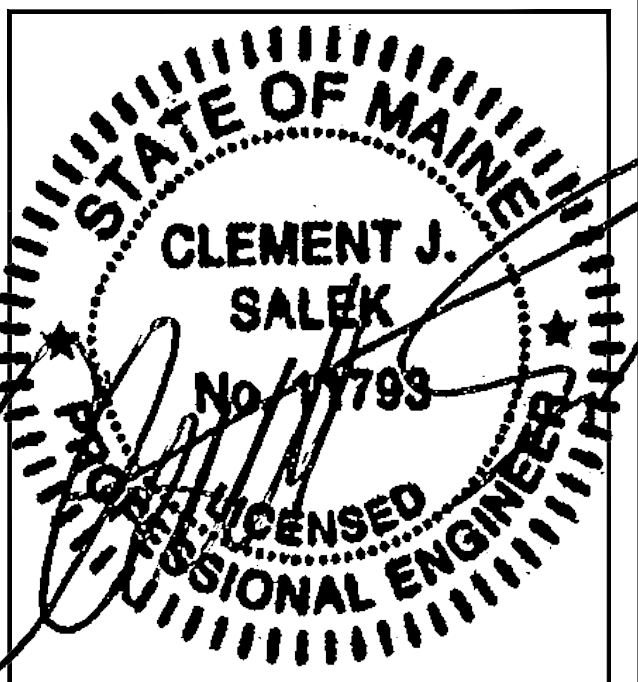
T-MOBILE NORTHEAST LLC
15 COMMERCE WAY, SUITE B
NORTON, MA 02766
(508) 286-2700



CROWN CASTLE INTERNATIONAL
500 WEST CUMMINGS PARK, SUITE 3600
WOBURN, MA 01801
(781) 970-0052



R.K. EXECUTIVE CENTRE
201 BOSTON POST ROAD WEST, SUITE 101
MARLBOROUGH, MA 01752
(508) 481-7400
www.chappellengineering.com



THESE DOCUMENTS ARE
CONFIDENTIAL AND ARE THE SOLE
PROPERTY OF T-MOBILE AND
MAY NOT BE REPRODUCED,
DISSEMINATED OR REDISTRIBUTED
WITHOUT THE EXPRESS WRITTEN
CONSENT OF T-MOBILE.

CHECKED BY: JMT

APPROVED BY: JMT

SUBMITTALS			
REV.	DATE	DESCRIPTION	BY
1	03/24/16	ISSUED FOR CONSTRUCTION	CMC
0	01/28/16	ISSUED FOR REVIEW	NWC

SITE NUMBER:
4DN2285D

SITE NAME:
ME285/HOLT
HALL

SITE ADDRESS:
794 CONGRESS STREET
PORTLAND, ME 04102

SHEET TITLE
STRUCTURAL
DETAILS

SHEET NUMBER

S-1