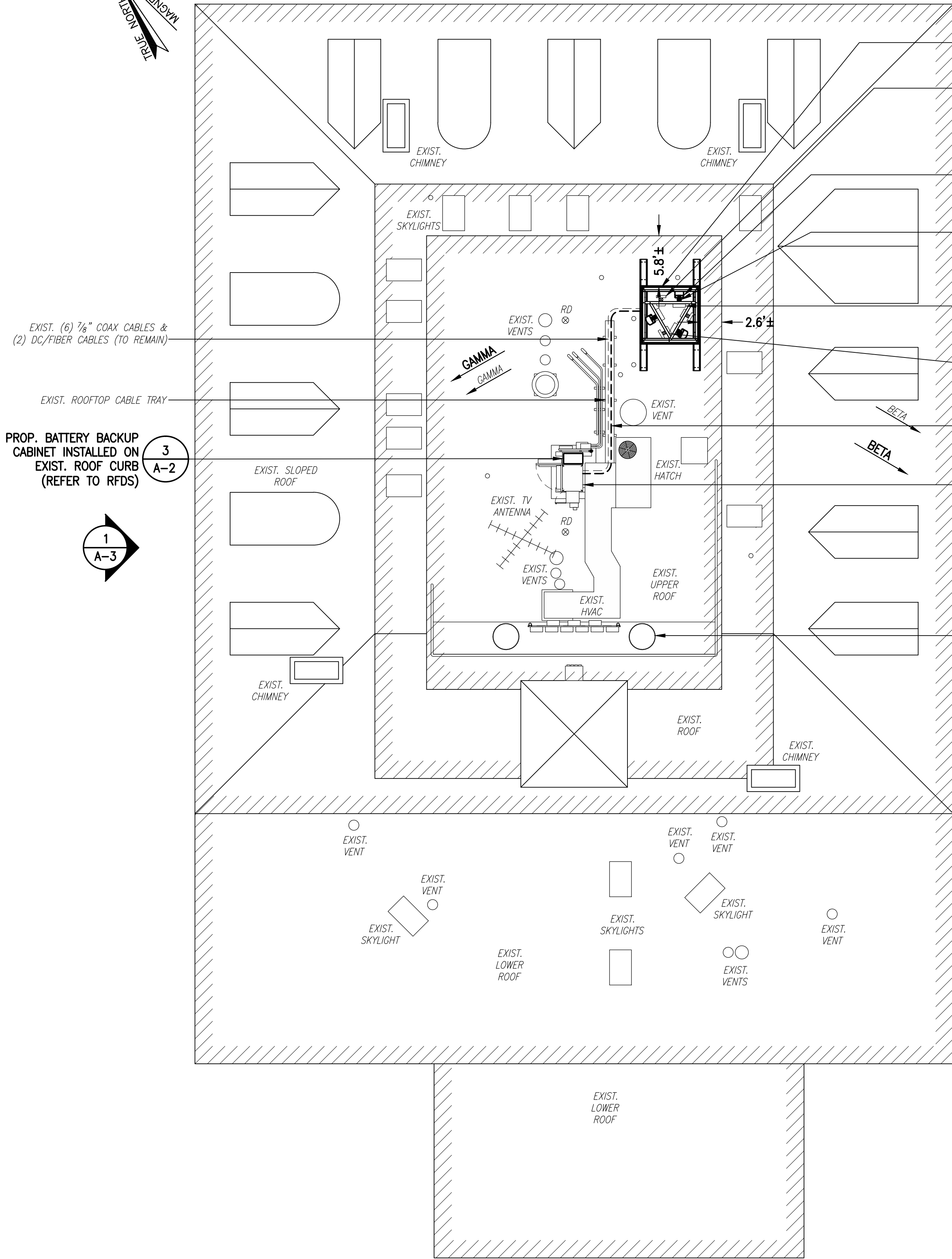


ALPHA
ALPHA



EXIST. (6) 7/8" COAX CABLES & (2) DC/FIBER CABLES (TO REMAIN)

EXIST. ROOFTOP CABLE TRAY

PROP. BATTERY BACKUP CABINET INSTALLED ON EXIST. ROOF CURB (REFER TO RFDS)

1
A-3

1 S-1 REPLACE EXIST. BALLAST MOUNT WITH PROP. 6'-5"x6'-5"x10'-0" FAUX CHIMNEY (PAINT TO MATCH)

EXIST. PANEL ANTENNAS WITHIN EXIST. FLUE TO BE RELOCATED TO PROP. FAUX CHIMNEY (1 PER SECTOR, TOTAL OF 3)

2 A-4 INSTALL PANEL ANTENNAS WITHIN PROP. FAUX CHIMNEY (1 PER SECTOR, TOTAL OF 3)

4 A-4 INSTALL SMART BIAS T'S WITHIN PROP. FAUX CHIMNEY BEHIND PROP. ANTENNAS (1 PER SECTOR, TOTAL OF 3)

EXIST. RRU'S TO BE RELOCATED TO PROP. FAUX CHIMNEY (2 PER SECTOR, TOTAL OF 6) (SEE NOTE)

EXIST. TWIN PCS TMA'S TO BE RELOCATED TO PROP. FAUX CHIMNEY (1 PER SECTOR, TOTAL OF 3)

PROP. (6) 7/8" COAX CABLES ROUTED ALONG EXIST. CABLE TRAY (SEE CHART ABOVE)

EXIST. T-MOBILE EQUIPMENT CABINET ON EXIST. ROOF CURB

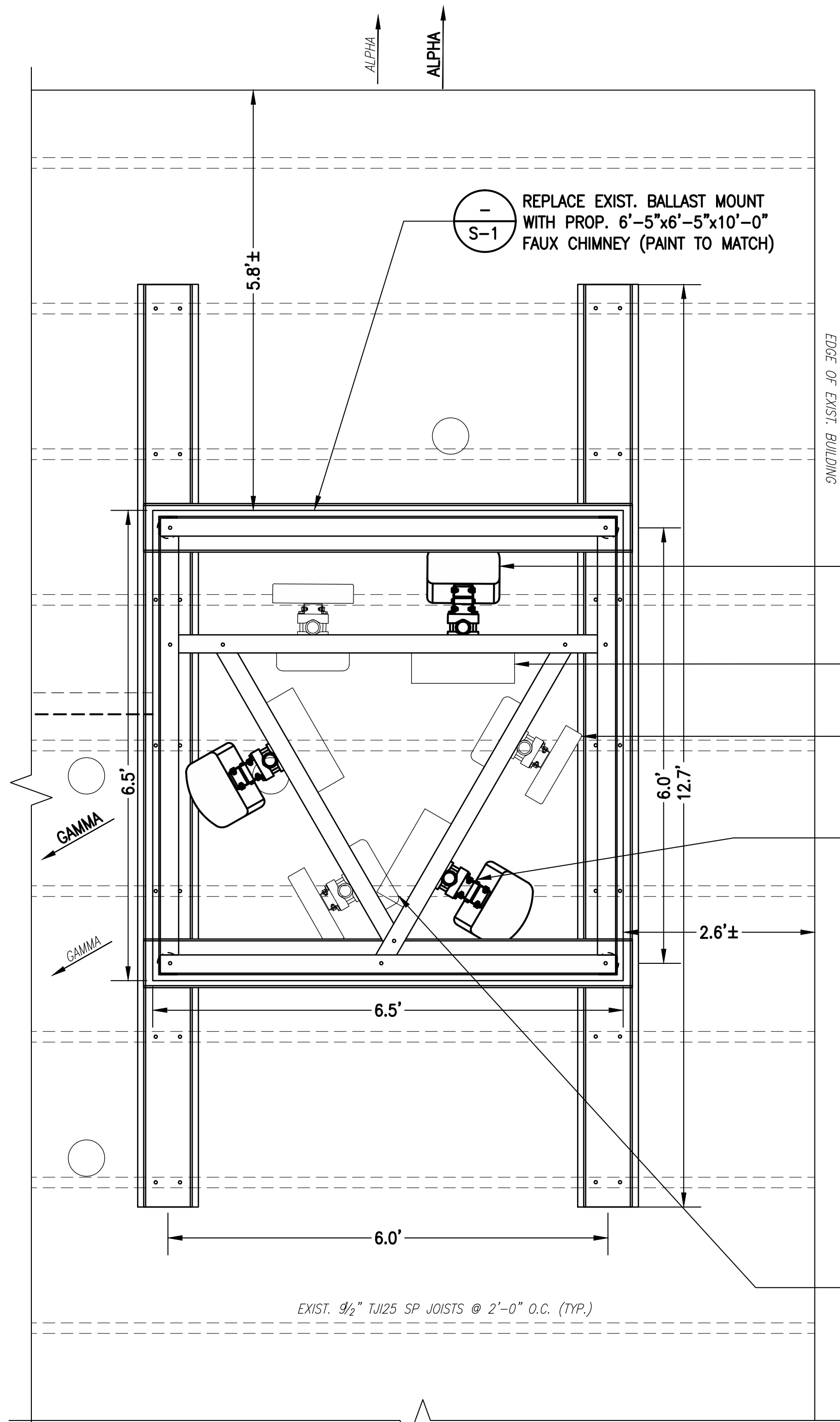
EXIST. AT&T ANTENNAS WITHIN EXIST. FLUE

RRU NOTE
CONFIRM FINAL NUMBER OF RRU'S FOR RBS 3518 WITH FINAL RF DATA SHEET.

ROOF PLAN
SCALE: 1/8" = 1'-0"
0 4' 8' 16' 24'

1
A-1

COAX CHART			
	EXISTING CONFIGURATION	PROPOSED CONFIGURATION	FINAL CONFIGURATION
ALPHA	(2) 7/8" COAX CABLES	(2) 7/8" COAX CABLES	(4) 7/8" COAX CABLES
BETA	(2) 7/8" COAX CABLES	(2) 7/8" COAX CABLES	(4) 7/8" COAX CABLES
GAMMA	(2) 7/8" COAX CABLES	(2) 7/8" COAX CABLES	(4) 7/8" COAX CABLES



PARTIAL ROOF PLAN
SCALE: 3/4" = 1'-0"
0 6' 12' 24' 36'

2
A-1

T-Mobile

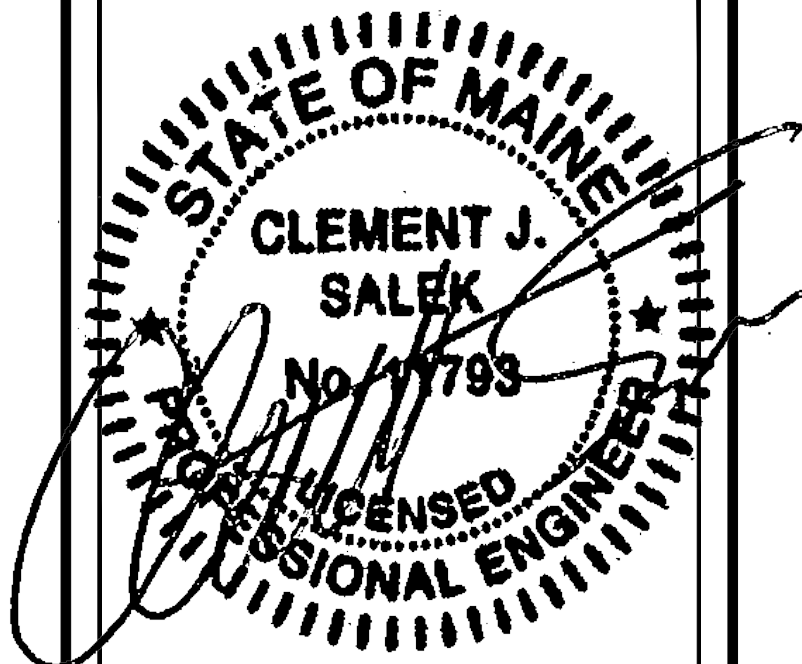
T-MOBILE NORTHEAST LLC
15 COMMERCE WAY, SUITE B
NORTON, MA 02766
(508) 286-2700

CROWN CASTLE

CROWN CASTLE INTERNATIONAL
500 WEST CUMMINGS PARK, SUITE 3600
WOBBURN, MA 01801
(781) 970-0052

CHAPPELL ENGINEERING ASSOCIATES, LLC
Civil-Structural-Land Surveying

R.K. EXECUTIVE CENTRE
201 BOSTON POST ROAD WEST, SUITE 101
MARLBOROUGH, MA 01752
(508) 481-7400
www.chappellengineering.com



THESE DOCUMENTS ARE CONFIDENTIAL AND ARE THE SOLE PROPERTY OF T-MOBILE AND MAY NOT BE REPRODUCED, DISSEMINATED OR REDISTRIBUTED WITHOUT THE EXPRESS WRITTEN CONSENT OF T-MOBILE.

CHECKED BY: JMT

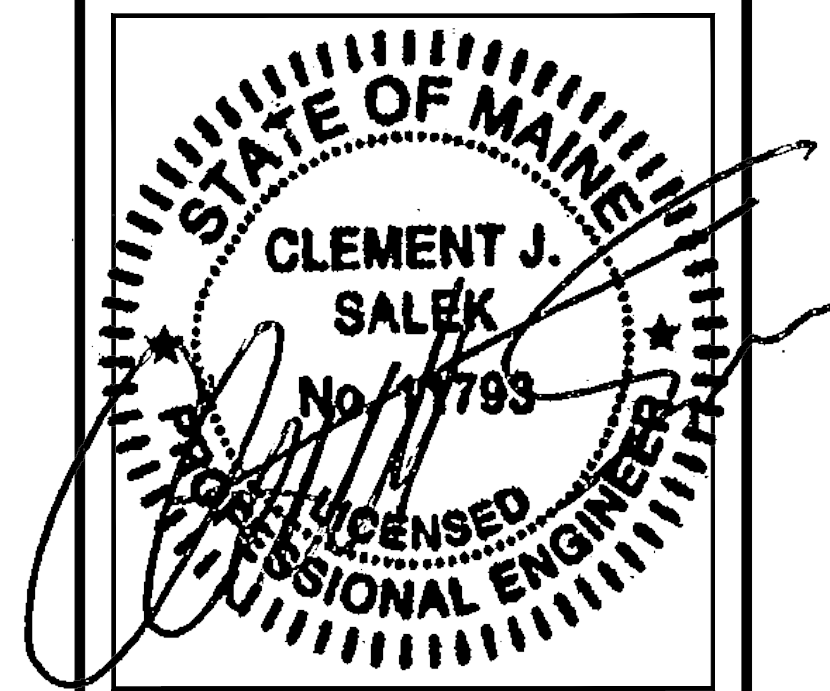
APPROVED BY: JMT

SUBMITTALS			
REV.	DATE	DESCRIPTION	BY
1	03/24/16	ISSUED FOR CONSTRUCTION	CMC
0	01/28/16	ISSUED FOR REVIEW	NWC

SITE NUMBER:
4DN2285D
SITE NAME:
ME285/HOLT HALL
SITE ADDRESS:
794 CONGRESS STREET
PORTLAND, ME 04102

SHEET TITLE
ROOF PLAN

SHEET NUMBER
A-1



THESE DOCUMENTS ARE CONFIDENTIAL AND ARE THE SOLE PROPERTY OF T-MOBILE AND MAY NOT BE REPRODUCED, DISSEMINATED OR REDISTRIBUTED WITHOUT THE EXPRESS WRITTEN CONSENT OF T-MOBILE.

CHECKED BY: JMT

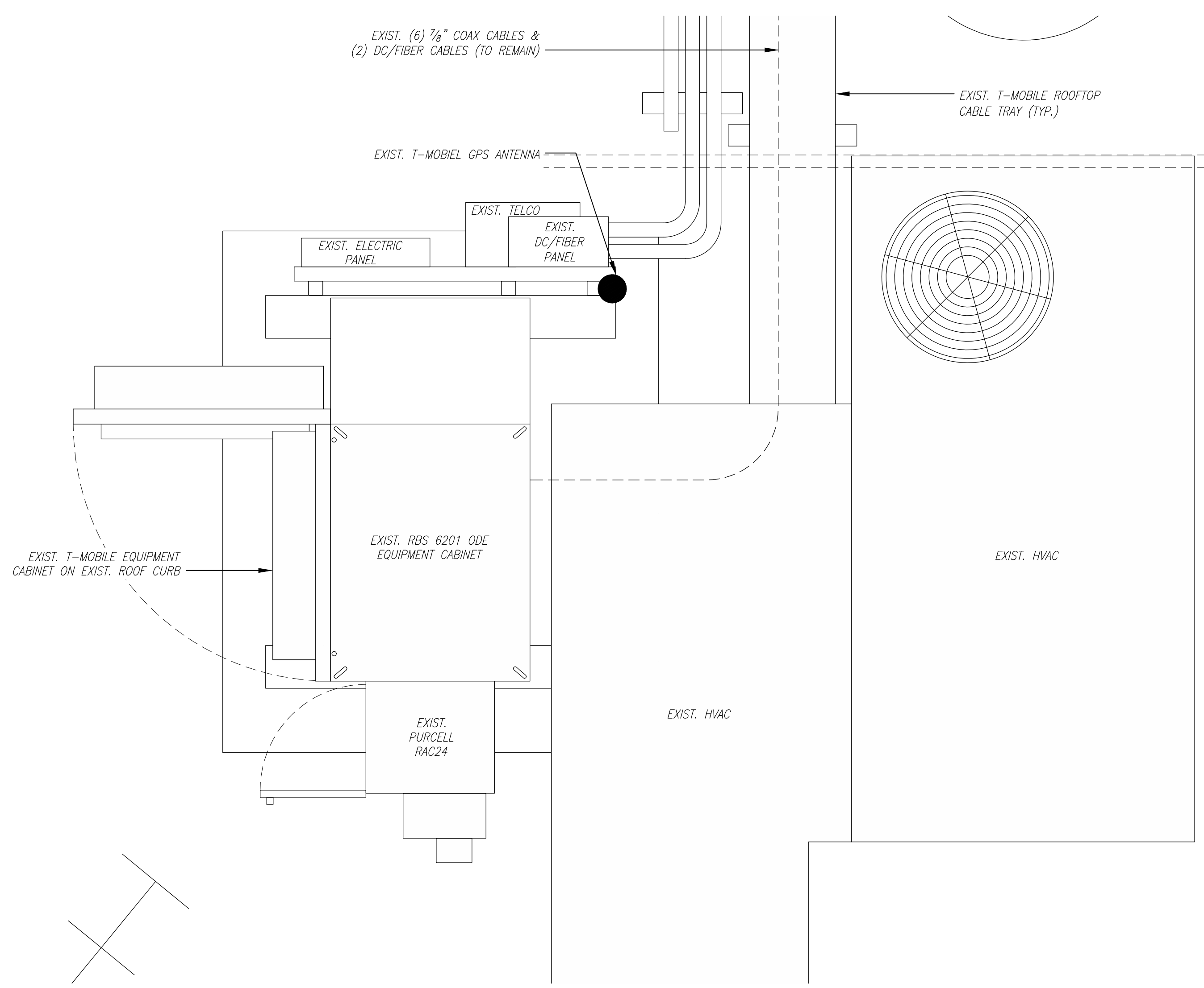
APPROVED BY: JMT

SUBMITTALS			
REV.	DATE	DESCRIPTION	BY
1	03/24/16	ISSUED FOR CONSTRUCTION	CMC
0	01/28/16	ISSUED FOR REVIEW	NWC

SITE NUMBER:
4DN2285D
SITE NAME:
ME285/HOLT HALL
SITE ADDRESS:
794 CONGRESS STREET
PORTLAND, ME 04102

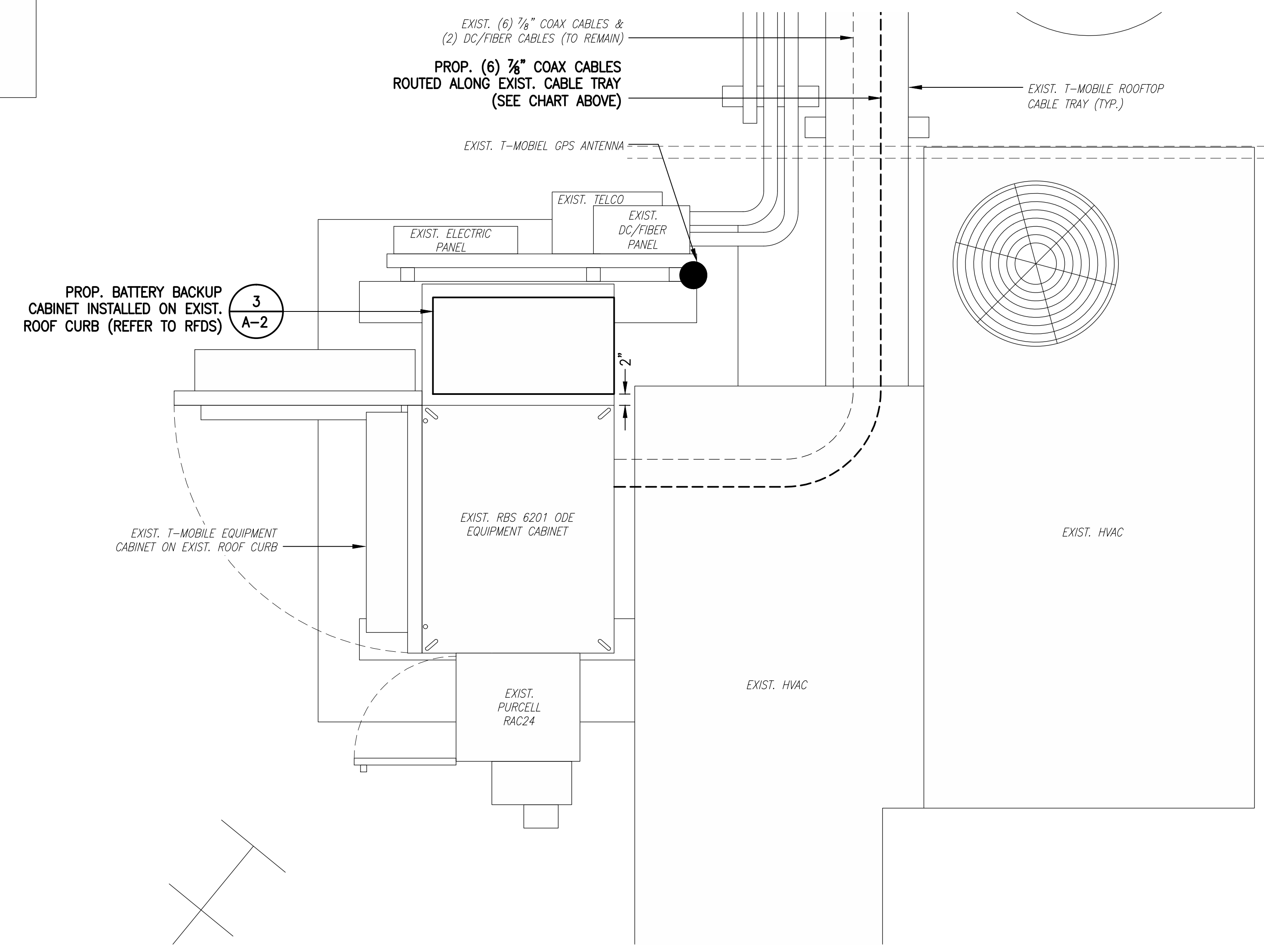
SHEET TITLE
EQUIPMENT PLANS

SHEET NUMBER
A-2

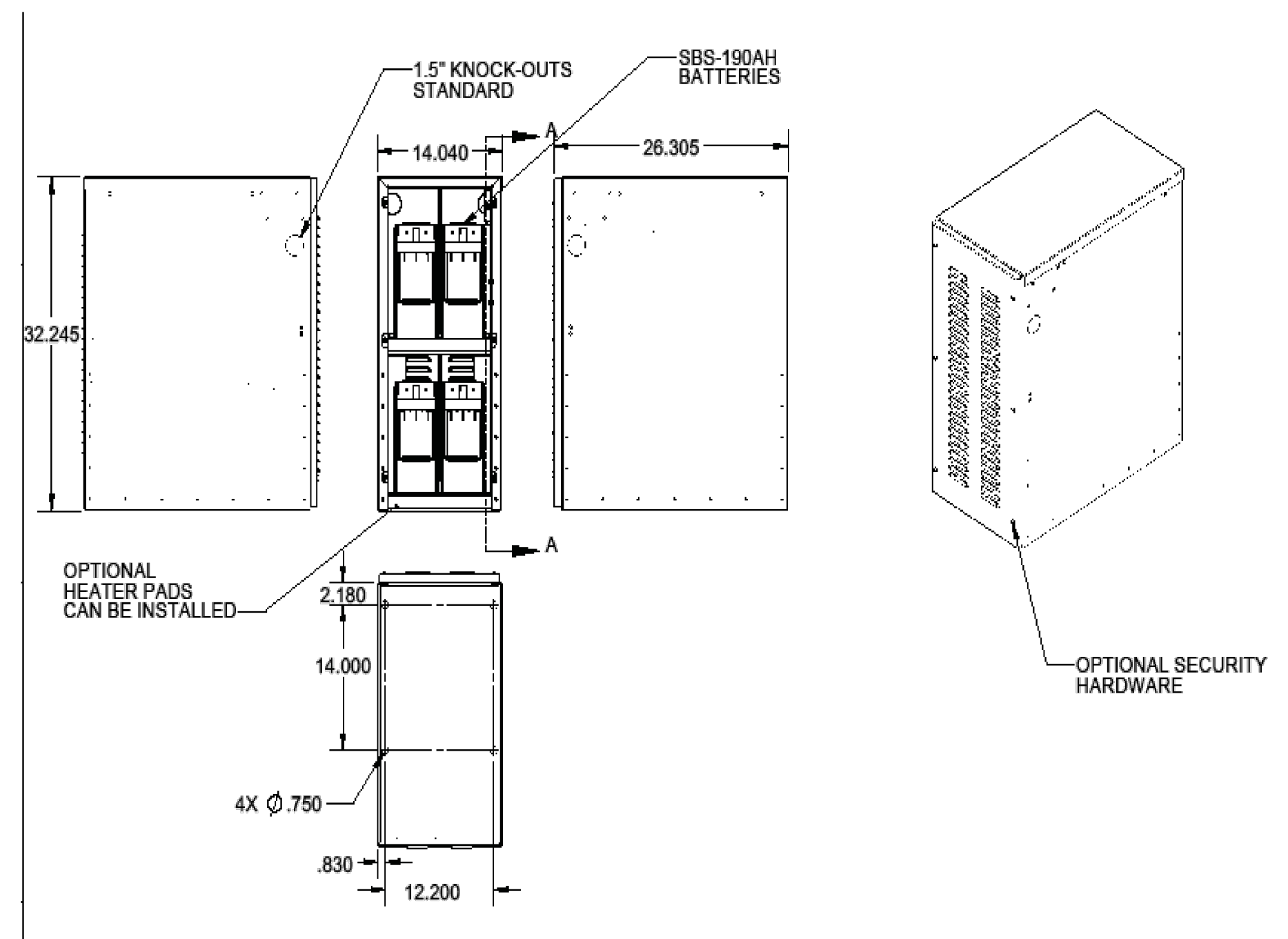


EXISTING EQUIPMENT PLAN
SCALE: 1" = 1'-0"
1 A-2

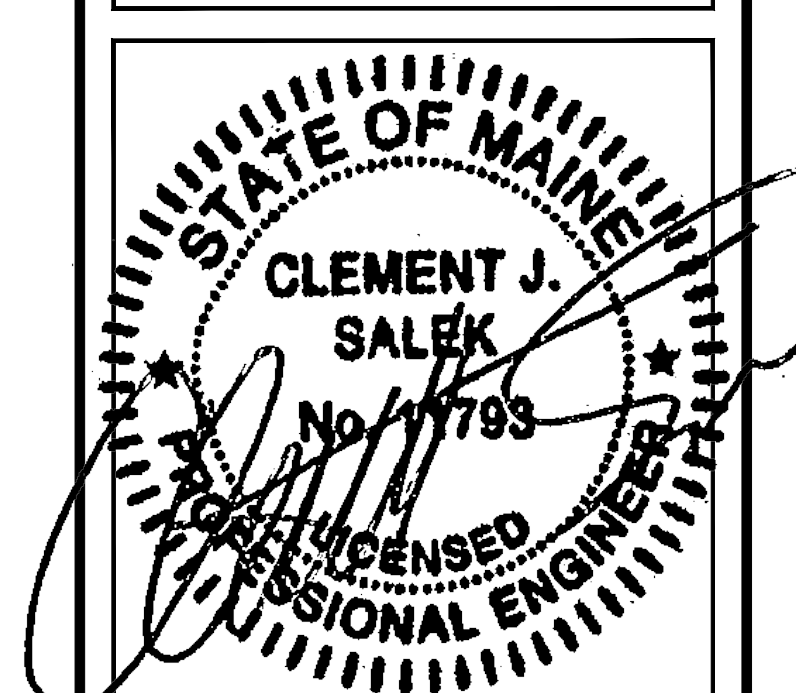
COAX CHART			
	EXISTING CONFIGURATION	PROPOSED CONFIGURATION	FINAL CONFIGURATION
ALPHA	(2) 7/8" COAX CABLES	(2) 7/8" COAX CABLES	(4) 7/8" COAX CABLES
BETA	(2) 7/8" COAX CABLES	(2) 7/8" COAX CABLES	(4) 7/8" COAX CABLES
GAMMA	(2) 7/8" COAX CABLES	(2) 7/8" COAX CABLES	(4) 7/8" COAX CABLES



PROPOSED EQUIPMENT PLAN
SCALE: 1" = 1'-0"
2 A-2



BBU DETAIL
SCALE: N.T.S.
3 A-2



THESE DOCUMENTS ARE CONFIDENTIAL AND ARE THE SOLE PROPERTY OF T-MOBILE AND MAY NOT BE REPRODUCED, DISSEMINATED OR REDISTRIBUTED WITHOUT THE EXPRESS WRITTEN CONSENT OF T-MOBILE.

CHECKED BY: JMT

APPROVED BY: JMT

SUBMITTALS			
REV.	DATE	DESCRIPTION	BY
1	03/24/16	ISSUED FOR CONSTRUCTION	CMC
0	01/28/16	ISSUED FOR REVIEW	NWC

SITE NUMBER:
4DN2285D
SITE NAME:
ME285/HOLT HALL
SITE ADDRESS:
794 CONGRESS STREET
PORTLAND, ME 04102

SHEET TITLE
ELEVATION

SHEET NUMBER
A-3

COAX CHART			
	EXISTING CONFIGURATION	PROPOSED CONFIGURATION	FINAL CONFIGURATION
ALPHA	(2) 7/8" COAX CABLES	(2) 7/8" COAX CABLES	(4) 7/8" COAX CABLES
BETA	(2) 7/8" COAX CABLES	(2) 7/8" COAX CABLES	(4) 7/8" COAX CABLES
GAMMA	(2) 7/8" COAX CABLES	(2) 7/8" COAX CABLES	(4) 7/8" COAX CABLES

RRU NOTE
CONFIRM FINAL NUMBER OF RRU'S FOR RBS 3518 WITH FINAL RF DATA SHEET.

