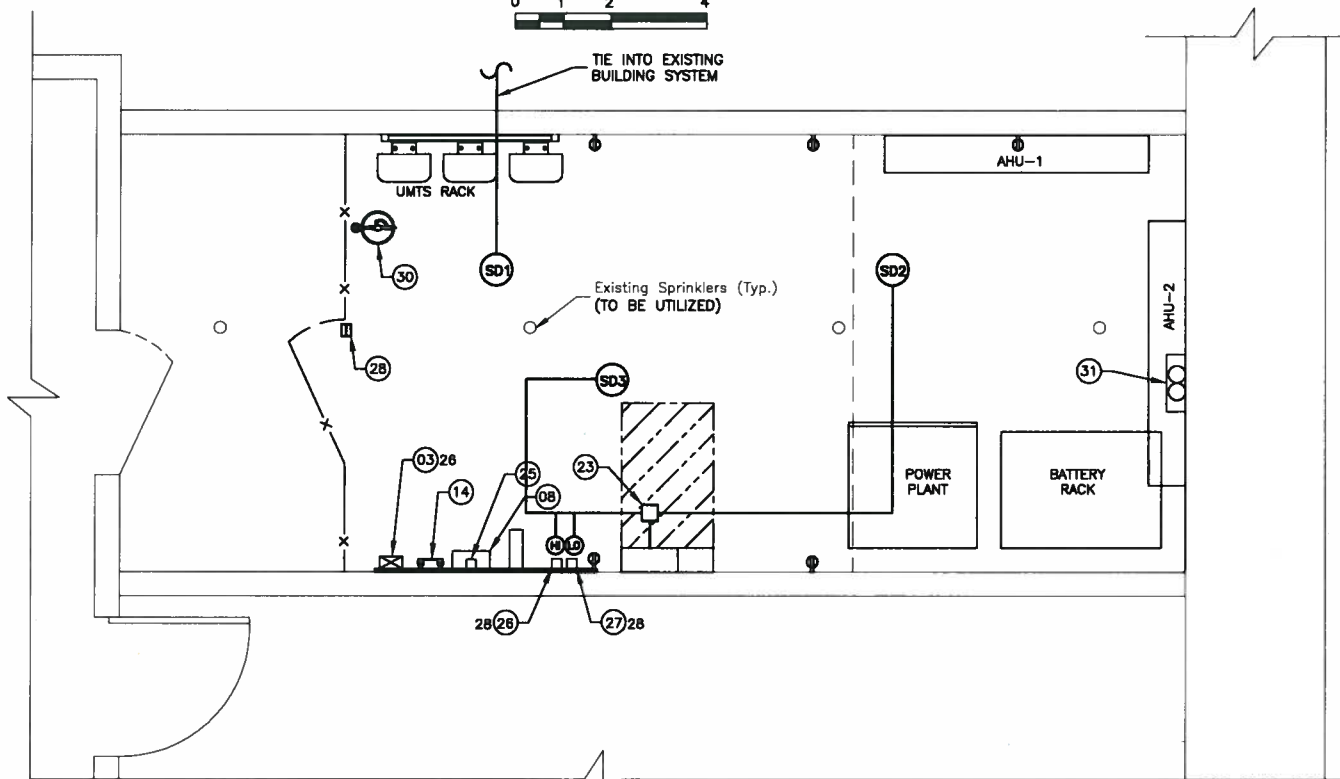
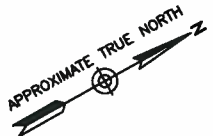
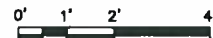


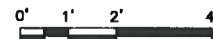
CABLE TRAY PLAN

SCALE: 1/4"=1' FOR 11"x17"
1/2"=1' FOR 22"x34"



ALARM & SIGNAL PLAN

SCALE: 1/4"=1' FOR 11"x17"
1/2"=1' FOR 22"x34"



NEMA 1		PANEL SCHEDULE - ILC		22,000 A.I.C.	
W/200A MAIN C/B					
CKT #	DESCRIPTION	AMP	AMP	DESCRIPTION	CKT #
1	BATTERY/RECTIFIER	40	40	FIF	2
3					4
5	SPARE	40	40	SPARE	6
7					8
9	SPARE	40	40	SPARE	10
11					12
13	SPARE	40	40	SPARE	14
15					16
17	SPARE	*30	30	SPARE	18
19					20
21	RECEPTACLES - EQUIPMENT ROOM	20	20	LIGHTING-EQUIPMENT ROOM	22
23	SPACE	-	-	SPACE	24
25	SMOKE, TEMP, DOOR ALARMS	20	-	CONTROLLER	26
27	TWIST LOCK RECEPTACLE-TELCO	15	20	CONTROLLER (HI/LO)	28
29	SPACE	20	20	SPARE	30
31	SPACE	-	-	SPACE	32
33					34
35	SURGE ARRESTOR	60	-	SPACE	36
37					38
39	SPACE	-	-	SPACE	40
41	SPACE	-	-	SPACE	42

LEGEND	
(SD1)	ROOM FIRE ALARM* *TIE INTO EXISTING BUILDING FIRE ALARM SYSTEM
(SD2)	STAND ALONE SMOKE DETECTOR WITH DRY CONTACTS FOR CONNECTION TO AT&T DIAL UP
(SD3)	STAND ALONE SMOKE DETECTOR WITH DRY CONTACTS FOR HVAC SHUTDOWN UPON ACTIVATION.

ALARM NOTES:

- COORDINATE ALL WORK WITH CURRENT ALARM MAINTENANCE COMPANY, BUILDING OWNER & LOCAL FIRE PREVENTION OFFICER.
- TIE INTO ALARM SYSTEM AT FIRE ALARM PANEL IF APPLICABLE. REPROGRAM THE EXISTING FIRE ALARM ANNUNCIATOR TO READ NEW DEVICES.
- VERIFY BREAKER SIZE WITH EQUIPMENT MANUFACTURER PRIOR TO CONSTRUCTION.

NOTE:

- # :- REFER TO SHEET E-1 FOR BILL OF MATERIALS.
- # :- REFER TO THIS SHEET FOR POWER PANEL SCHEDULE.

CABLE TRAY PARTS-BOM

NEWTON INSTRUMENTS #A-2213, CEILING HANGER BRACKET
NEWTON INSTRUMENT #3010-8, 3/8"x1 3/4" CAP SCREW
NEWTON INSTRUMENT 5/8"-11 THREADED ROD
NEWTON INSTRUMENT #3014-8, 5/8"-11 NUT
NEWTON INSTRUMENT #3029-1, HANGER BRACKET
NEWTON INSTRUMENT #3014-8, NUT
NEWTON INSTRUMENT #A-1589, SPLICE CLAMP
NEWTON INSTRUMENT #3017-2, BOLT
NEWTON INSTRUMENT #3018-4, 5/8" EXPANSION SHIELD
NEWTON INSTRUMENT #2003-23, 18-INCH CABLE TRAY
NEWTON INSTRUMENT #A-1592, CORNER CLAMP
NEWTON INSTRUMENT #3017-1, BOLT
NEWTON INSTRUMENT #2085-8, 18" END CLOSING BAR



550 COCHITUATE ROAD
SUITES 13 & 14
FRAMINGHAM, MA 01701



22 KEEWAYDIN DRIVE
SALEM, NH 03079

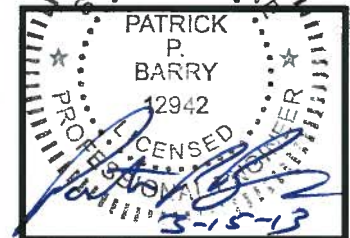
HOLT HALL
SITE NO.: ME2980

CONSTRUCTION DRAWINGS

0 03/15/13 FOR CONSTRUCTION
A 03/12/13 FOR COMMENT



Dewberry Engineers Inc.
280 SUMMER STREET
10TH FLOOR
BOSTON, MA 02210
PHONE # 617 695-3400
FAX # 617 695-3310



DRAWN BY: MR

REVIEWED BY: DAS

CHECKED BY: PPB

PROJECT NUMBER: 50003936

JOB NUMBER: 50048546

SITE ADDRESS

794 CONGRESS STREET
PORTLAND, ME 04102

SHEET TITLE

CABLE TRAY &
ALARM & SIGNAL PLANS

SHEET NUMBER