

LIGHTING FIXTURE SCHEDULE							
ALL FIXTURES SHALL BE FURNISHED COMPLETE WITH ALL HARDWARE LAMPS, HANGERS, FITTINGS, ETC. FOR A COMPLETE AND PROPER INSTALLATION							
TYPE	MANUFACTURER	CATALOG NO.	MTG.	VOLT	LAMPS		REMARKS/BALLAST INFORMATION
					NO.	WATT	
A	RECESSED DOWNLIGHT FLUORESCENT PRESCOLITE	CFRCB-826EB-STCB8CL	R	120	2	26	F26T3X/SPX/4P 8" APERTURE, CLEAR ALZAK REFLECTOR LUTRON HI-LUME DIMMING BALLAST FDB-CF26-120-2

LIGHTING FIXTURE SCHEDULE
NO SCALE REF: NA **D3**

ABBREVIATIONS

ER = EXISTING TO REMAIN
R = REMOVE (EXISTING EQUIPMENT/DEVICE OR LIGHT FIX.)
RL = RELOCATE (EXISTING EQUIPMENT/DEVICE OR LIGHT FIX.)
RX = EXISTING EQUIP./DEVICE OR LIGHT FIXTURE RELOCATED

GENERAL NOTES

- SURFACE MOUNTED CONDUIT OR RACEWAYS (WIREFORM, ETC) ARE NOT ACCEPTABLE AT NEW OR EXISTING WALLS.
- PROVIDE SHALLOW BOXES AT WALLS WITH FURRING CHANNELS.
- ALL EMERGENCY CIRCUITS REQUIRE CONDUCTORS RUN IN CONDUIT. REMOVE GYPSUM WALL BOARD AS REQUIRED TO CONCEAL CONDUIT.

ABBREVIATIONS AND GENERAL NOTES
NO SCALE REF: NA **D2**

LEGEND

- LP-1,3 → HOMERUN TO PNLBRD - ARROWS INDICATE NUMBER OF CIRCUITS. CROSS LINES INDICATE NUMBER OF CONDUCTORS OTHER THEN TWO.
- ↑ → CIRCUIT NUMBER(S)
- PANEL DESIGNATION
- WIRING CONCEALED IN WALL OR CEILING
- E - EXISTING WIRING
- 1' x 4' FLUORESCENT FIXTURE
- 4' x 6" FLUORESCENT FIXTURE
- 8' x 6" FLUORESCENT FIXTURE
- 2' x 2' FLUORESCENT FIXTURE
- WALL MOUNTED FIXTURE
- CEILING MOUNTED FIXTURE
- ↻ EXISTING NURSE CALL LIGHT
- S SINGLE POLE SWITCH - MTD CL UP 4'-0"
- ⊞ EXISTING TOGGLE SWITCH
- ⊞ THREE-WAY SWITCH - MTD CL UP 4'-0"
- ⊞ SWITCH AND PILOT LAMP - MTD CL UP 4'-0"
- ⊞ DIMMER SWITCH - MTD CL UP 4'-0"
- ⊞ MULTI-LOCATION DIMMER SWITCH (CONTROL) MASTER AND REMOTE SEE SPEC.
- ⊞ DUPLEX CONVENIENCE RECEPTACLE - MOUNTED - CL UP 18" OR AS NOTED
- ⊞ EXISTING DUPLEX CONVENIENCE RECEPTACLE
- ⊞ DUPLEX CONVENIENCE RECEPTACLE - MOUNTED CL UP 48" OR AS NOTED
- ⊞ GFCI DUPLEX CONVENIENCE RECEPTACLE - MOUNTED CL UP 48" OR AS NOTED
- ⊞ DOUBLE DUPLEX RECEPTACLE IN TWO GANG WALL BOX - CL UP 18" OR AS NOTED
- ⊞ TELCOM OUTLET- PACS SYSTEM OUTLET 2 VOICE, 1 PACS NET, 1 MMC NET, (3 DROPS)- MOUNTED CL UP 18"
- ⊞ TELCOM OUTLET- STANDARD MMC OUTLET 2 VOICE, 1 MMC NET, 1 BLANK (2 DROPS)- MOUNTED CL UP 18"
- ⊞ EXISTING TELCOM OUTLET
- ⊞ TV OUTLET, COORDINATE MOUNTING WITH TV BRACKET.
- ⊞ SPECIAL OUTLET AS INDICATED - MOUNTED AS INDICATED
- ⊞ EXISTING - SPECIAL OUTLET
- ⊞ ELECTRICAL MOTOR
- ⊞ MOTOR CONTROL EQUIPMENT
- ⊞ DISCONNECT SWITCH - FUSED WHEN NOTED. SIZE AS REQUIRED OR AS INDICATED
- ⊞ FUSED DISCONNECT SWITCH - SIZE FUSES AS RECOMMENDED BY MANUFACTURER
- ⊞ JUNCTION BOX - SIZE AS REQUIRED OR AS INDICATED
- ⊞ TELEPHONE (TEL) OR DATA (DF) BACKBOARD - SIZE AS INDICATED
- ⊞ LIGHTING/POWER PANELBOARD 208Y/120
- ⊞ LIGHTING/POWER PANELBOARD 480V
- ⊞ EXISTING PANELBOARD 208Y/120
- ⊞ EXISTING PANELBOARD 480Y/277
- ⊞ DRY TYPE TRANSFORMER
- ⊞ FIRE ALARM DEVICES -----
- ⊞ SMOKE DETECTOR - MOUNTED ON CEILING
- ⊞ EXISTING SMOKE DETECTOR - MOUNTED ON CEILING
- ⊞ HEAT DETECTOR - MOUNTED ON CEILING
- ⊞ EXISTING FIRE ALARM HORN/LIGHT UNIT
- ⊞ FIRE ALARM HORN/LIGHT UNIT, MIN 75/15 CD OR AS NOTED - MOUNTED UP 80" ON WALL
- ⊞ FIRE ALARM STROBE LIGHT UNIT, MIN 75/15 CD OR AS NOTED - MOUNTED UP 80" AFF
- ⊞ FIRE ALARM MANUAL PULL STATION - MOUNTED CL UP 4'-0" ON WALL
- ⊞ EMERGENCY LIGHTING DEVICES -----
- ⊞ EXIT SIGN WITH ARROWS AS INDICATED - CEILING MOUNTED, EXCEPT AS NOTED
- ⊞ EXIT SIGN WITH ARROWS AS INDICATED - WALL MOUNTED TIGHT TO CEILING, EXCEPT AS NOTED
- ⊞ EXISTING EXIT SIGN (ARROWS AS INDICATED)
- ⊞ MISCELLANEOUS -----
- ⊞ CONTROL PANEL
- ⊞ PUSH BUTTON - MTD UP 4'-0" OR AS INDICATED
- ⊞ EXISTING PUSH BUTTON STATION
- ⊞ ELECTRIC DOOR HOLDER (EXISTING IS SHOWN AS DASHED)
- ⊞ TELEVISION COAXIAL OUTLET - MOUNTED UP SAME AS ASSOCIATED RECEPTACLE
- ⊞ RELAY OR CONTACTOR - SIZE AS REQUIRED OR AS INDICATED
- ⊞ CLOCK - MOUNTED UP 8'-0" ON WALL
- ⊞ EXISTING SPEAKER
- ⊞ EQUIPMENT LABEL - SEE EQUIPMENT SCHEDULE FOR WIRING REQUIREMENTS. VERIFY EXACT LOCATION WITH ASSOCIATED PLAN.
- ⊞ KEYNOTE TAG

ELECTRICAL LEGEND
NO SCALE REF: NA **A1**

Architects • Engineers

HARRIMAN ASSOCIATES

One Auburn Business Park
Auburn, Maine 04210

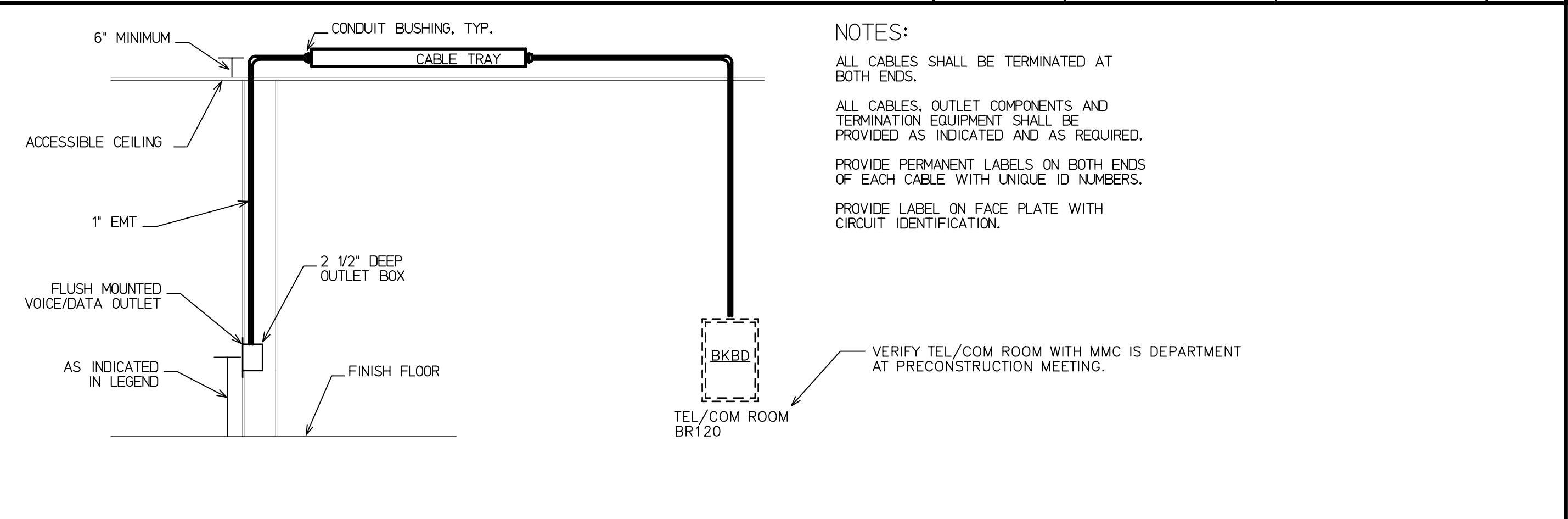
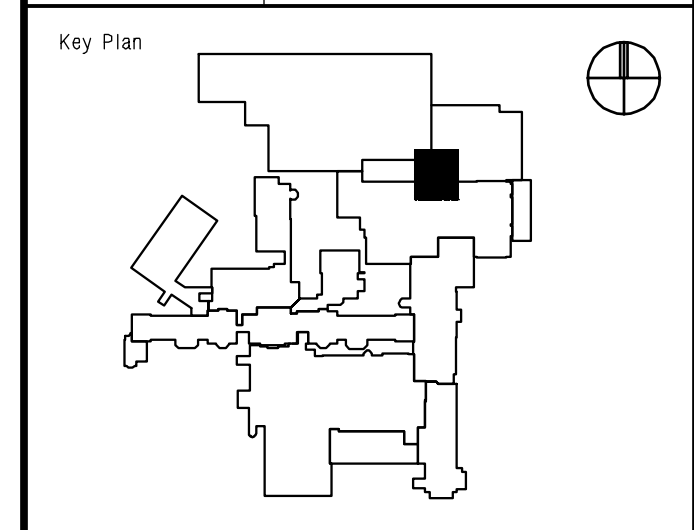
207.784.5100 tel
207.782.3017 fax
www.harriman.com

Building communities since 1970

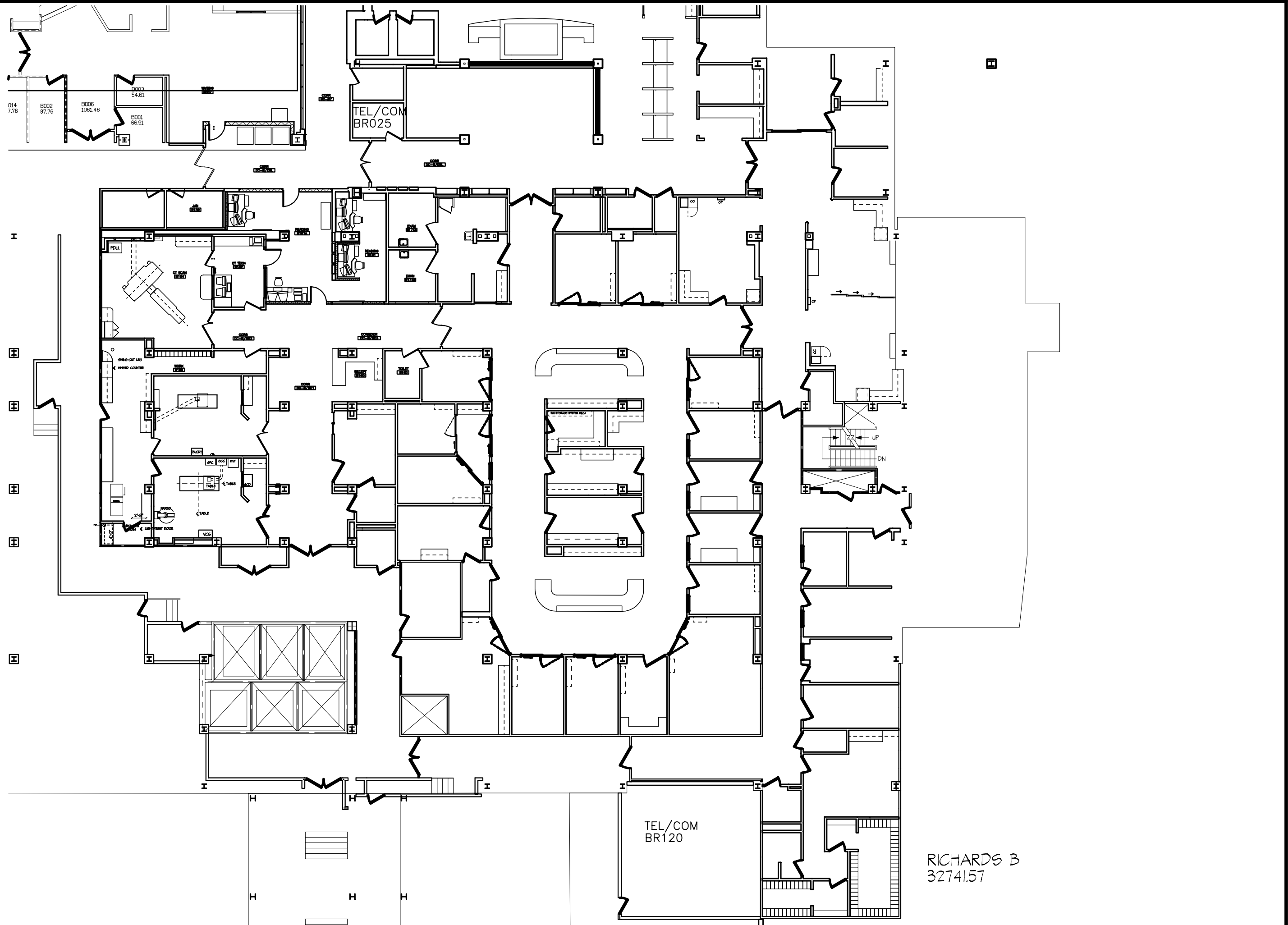
© 2002

Project Title
**MAINE MEDICAL CENTER
ED READING
RENOVATION**
PORTLAND, MAINE

HA Project No. **00112**



VOICE/DATA DETAIL
NO SCALE REF: NA **C3**



PART. PLAN - TEL/COM ROOM LOCATIONS
NOT TO SCALE REF: NA **A3**

Mark	Date	Description
-	07-22-02	ISSUED FOR PRICING
-	06-07-02	FINAL REVIEW
-	05-14-02	PROGRESS REVIEW

Issue Dates

Drawing Status

Drawing Title
**ELECTRICAL LEGEND
AND SCHEDULES**

PA / PE: **PRM** Drawn By: **PRA**

Drawing Number

E00.1