

DEMO CEILING PLAN
 1/4" = 1'-0" 0 2 4 6 REF: NA **A2**

DEMOLITION LEGEND

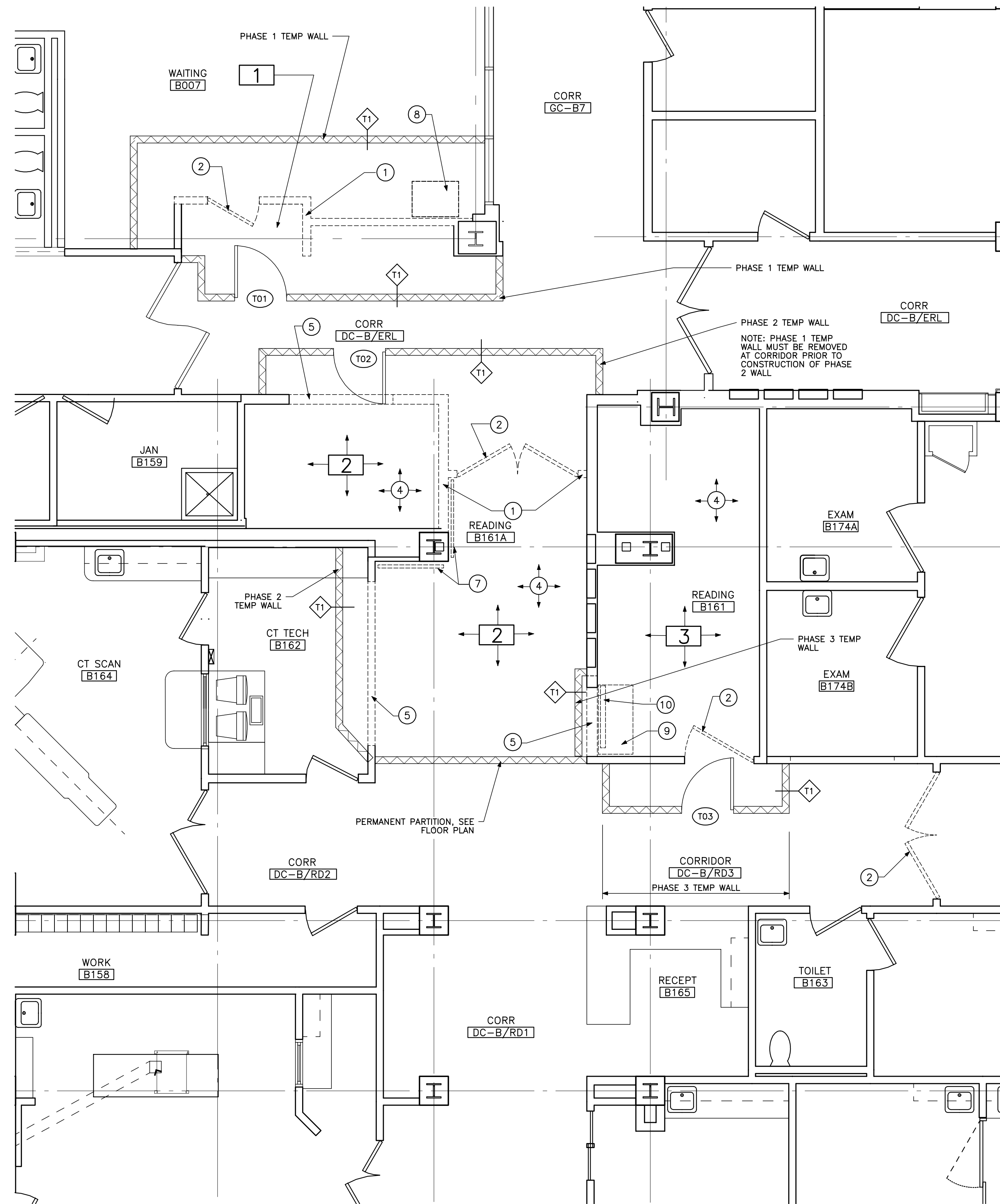
- ① REMOVE EXISTING STUD AND GPDW PARTITION COMPLETE.
- ② REMOVE EXISTING DOOR AND FRAME COMPLETE.
- ③ REMOVE EXISTING ACOUSTICAL TILE CEILING COMPLETE.
- ④ REMOVE EXISTING V.C.T. FLOORING AND VINYL BASE COMPLETE.
- ⑤ REMOVE PORTION OF EXISTING STUD AND GPDW PARTITION AS INDICATED BY PLAN.
- ⑥ REMOVE EXISTING GPDW SOFFIT
- ⑦ REMOVE EXISTING WOOD RAIL FOR RELOCATION
- ⑧ REMOVE EXISTING TV AND WALL MOUNT FOR RELOCATION
- ⑨ REMOVE EXISTING CASEWORK
- ⑩ REMOVE EXISTING FILM ILLUMINATOR FOR RELOCATION

PHASING NOTES

- ① CONSTRUCT NEW VENDING ALCOVE AT CORRIDOR DC-B/ERL. MOVE EXG VENDING MACHINES AND INSTALL NEW VENDING MACHINE FOR HOT/COLD DRINKS AT NEW LOCATION.
- ② CONSTRUCT ALTERATIONS TO READING B161A. EXISTING READING ROOM B161 AND CT TECH B162 MUST REMAIN IN USE DURING CONSTRUCTION. COORDINATE INSTALLATION OF TEMPORARY PARTITION IN CT TECH B162 WITH OWNER, LIMIT WORK IN THIS ROOM TO ONE WEEK MAX. ALL WORK IN OWNER OCCUPIED AREAS MUST BE DONE DURING EVENING HOURS.
- ③ WHEN PHASE 2 ALTERATIONS TO READING B161A ARE COMPLETE, RELOCATE THE TWO PACS WORKSTATIONS FROM READING B161 - SEE FLOOR PLAN FOR LOCATIONS. COMPLETE ALTERATIONS TO READING B161.

PHASE COMPLETION TIMES

PHASE 1: 3 WEEKS
 PHASE 2: 4 WEEKS
 PHASE 3: 2 WEEKS
 TOTAL: 9 WEEKS



DEMO FLOOR PLAN AND PHASING NOTES
 1/4" = 1'-0" 0 2 4 6 REF: NA **A1**

Project Title
**MAINE MEDICAL CENTER
 ED READING
 RENOVATION**
 PORTLAND, MAINE

HA Project No. **00112**

Key Plan

Mark	Date	Description
-	07-22-02	ISSUED FOR BID
-	06-07-02	FINAL REVIEW
-	05-13-02	75% REVIEW

Mark	Date	Description
-	07-22-02	ISSUED FOR BID
-	06-07-02	FINAL REVIEW
-	05-13-02	75% REVIEW

Mark	Date	Description
-	07-22-02	ISSUED FOR BID
-	06-07-02	FINAL REVIEW
-	05-13-02	75% REVIEW

Drawing Title
**DEMO FLOOR PLAN
 AND PHASING NOTES
 DEMO CEILING PLAN**

PA / PE: **JBL** Drawn By:

Drawing Number
AD10.1