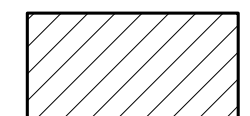
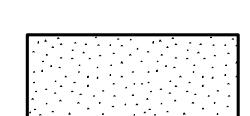
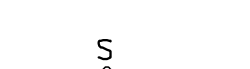

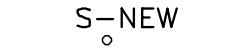
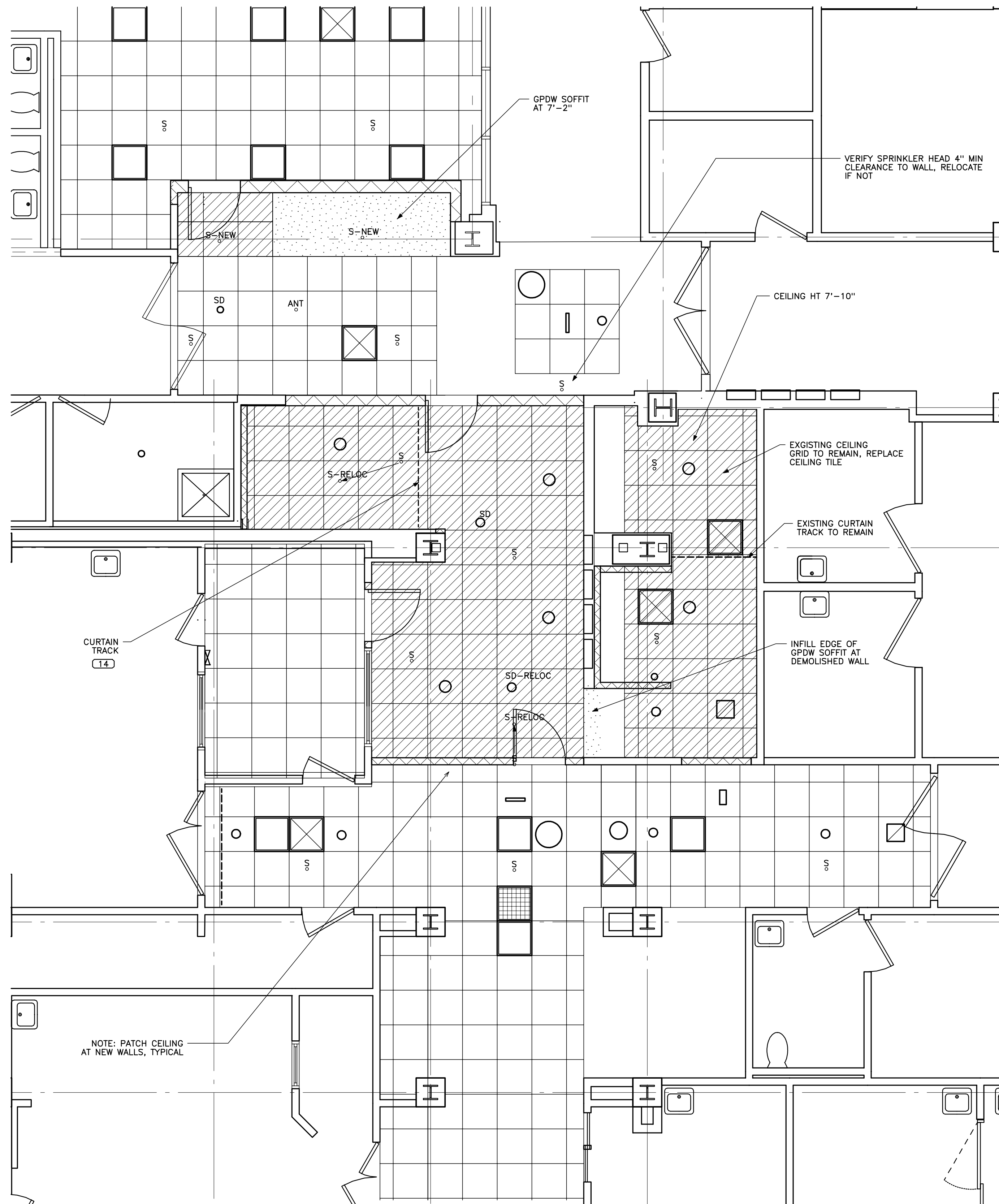


**LEGEND**

-  HATCHED AREAS INDICATE NEW SUSPENDED ACOUSTIC CEILING. EXISTING GRID TO REMAIN AT READING B161
-  STIPPLED AREAS INDICATE NEW GPDW SOFFIT
-  EXISTING SPRINKLER HEAD
-  S-RELOC RELOCATED SPRINKLER HEAD
-  S-NEW NEW SPRINKLER HEAD

NOTE: SEE ELECTRICAL DWGS FOR ADDITIONAL CLG MOUNTED DEVICES NOT SHOWN



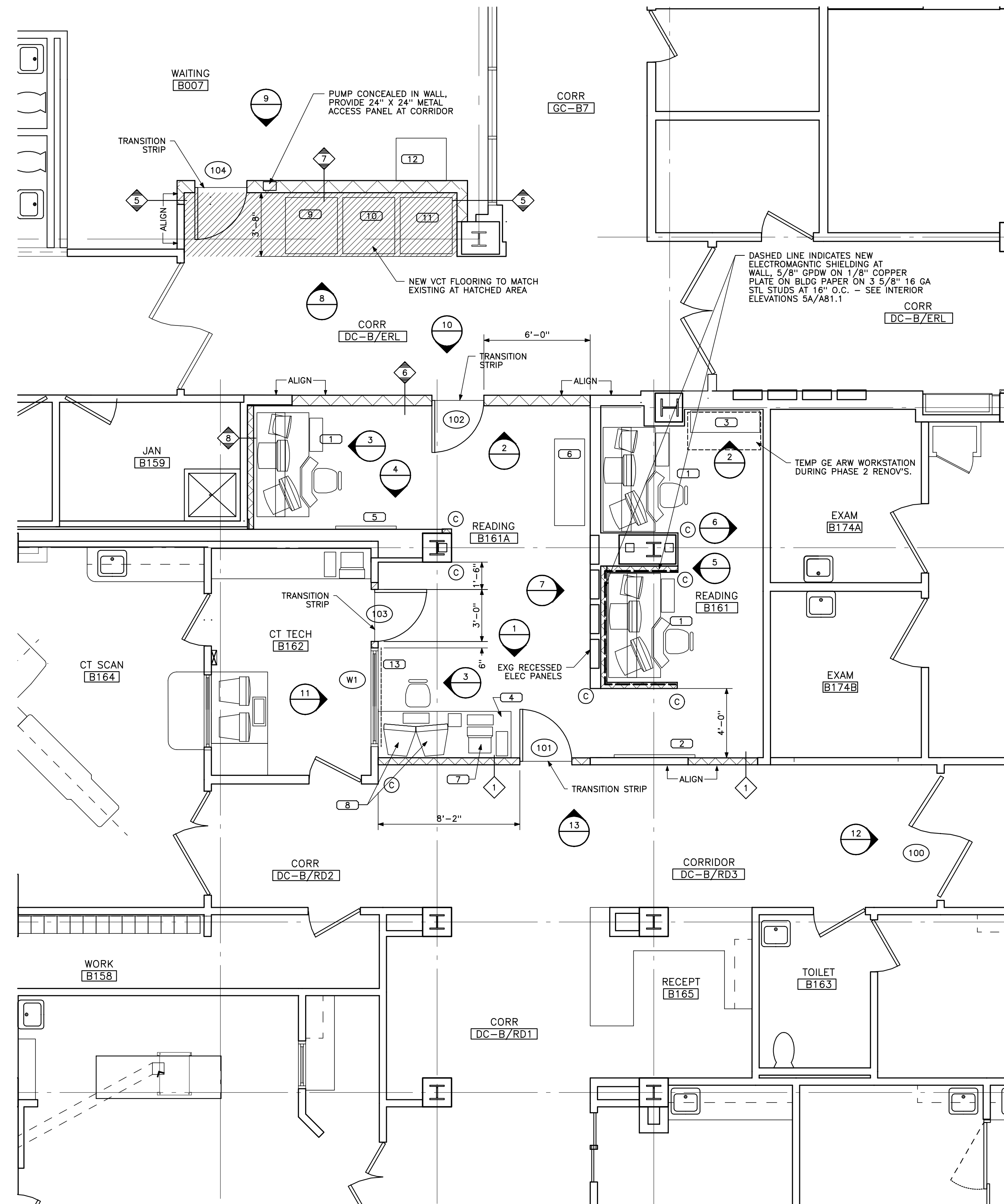
**CEILING PLAN**

1/8" = 1'-0" 0 4' 8' 12' REF: NA

**A2**

**LEGEND**

-  CORNERGUARD, SEE SPECIFICATIONS



**FLOOR PLAN**

1/8" = 1'-0" 0 4' 8' 12' REF: NA

**A1**

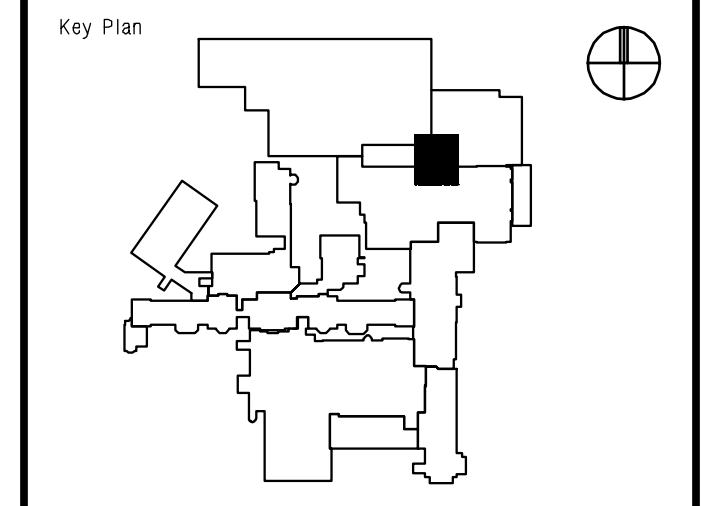
Architects • Engineers  
**HARRIMAN ASSOCIATES**

One Auburn Business Park  
Auburn, Maine 04210  
207.784.5100 tel  
207.782.3017 fax  
www.harriman.com

Building communities  
since 1870  
© 2002

Project Title  
**MAINE MEDICAL CENTER  
ED READING  
RENOVATION**  
PORTLAND, MAINE

HA Project No. **00112**



Mark	Date	Description
-	07-22-02	ISSUED FOR BID
-	06-03-02	FINAL REVIEW
-	05-13-02	75% REVIEW

Issue Dates

Drawing Status

Drawing Title  
**FLOOR PLAN  
& CEILING PLAN**

PA / PE: **JBL** Drawn By:

Drawing Number

**A10.1**