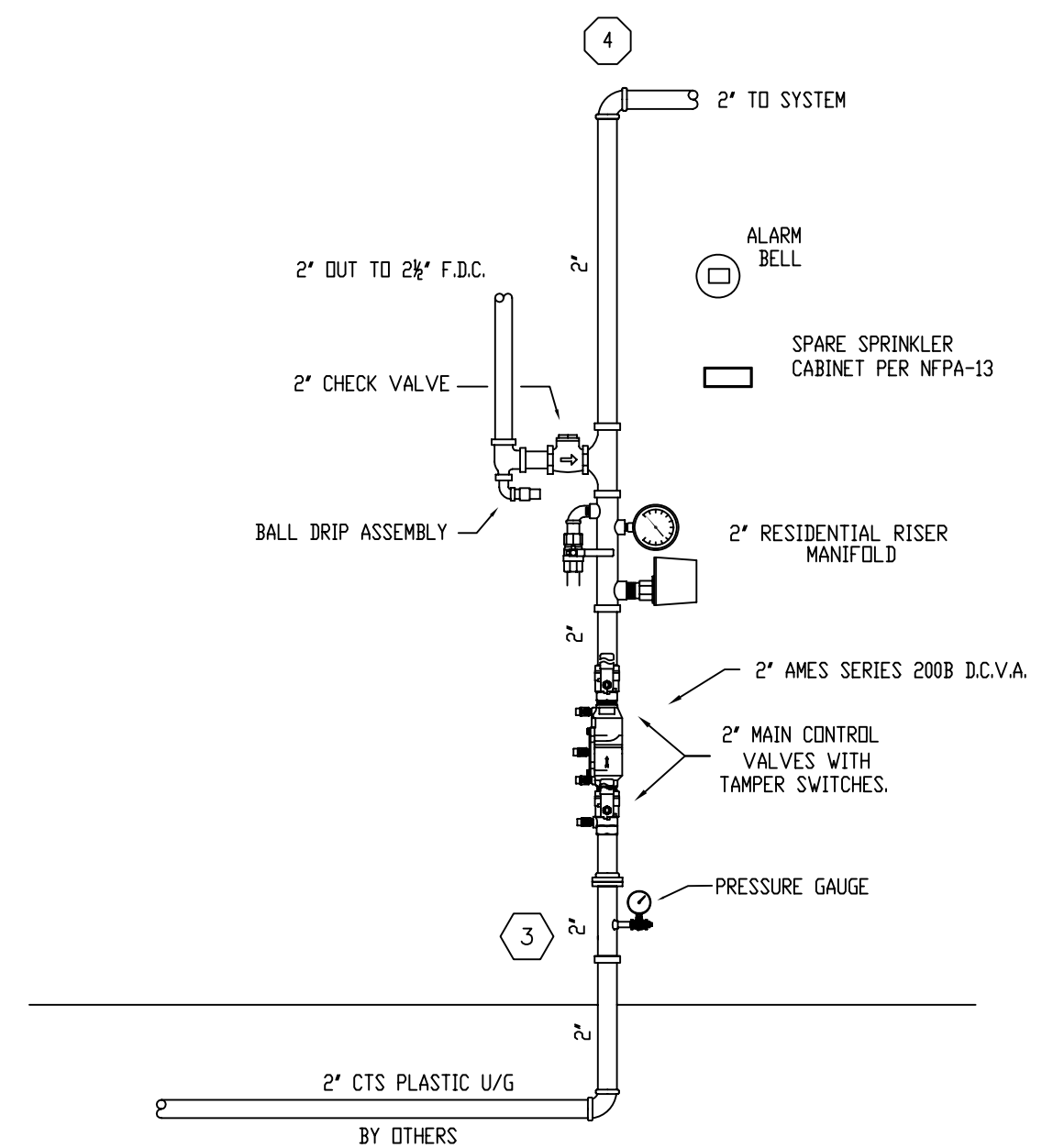


**FLOW TEST DATA**

STATIC PRESSURE:	54 PSI
RESIDUAL PRESSURE:	51 PSI
QUANTITY FLOWING:	949 GPM
TWO HYDRANT TEST:	
DECEMBER 13, 2002 PORTLAND WATER DISTRICT	



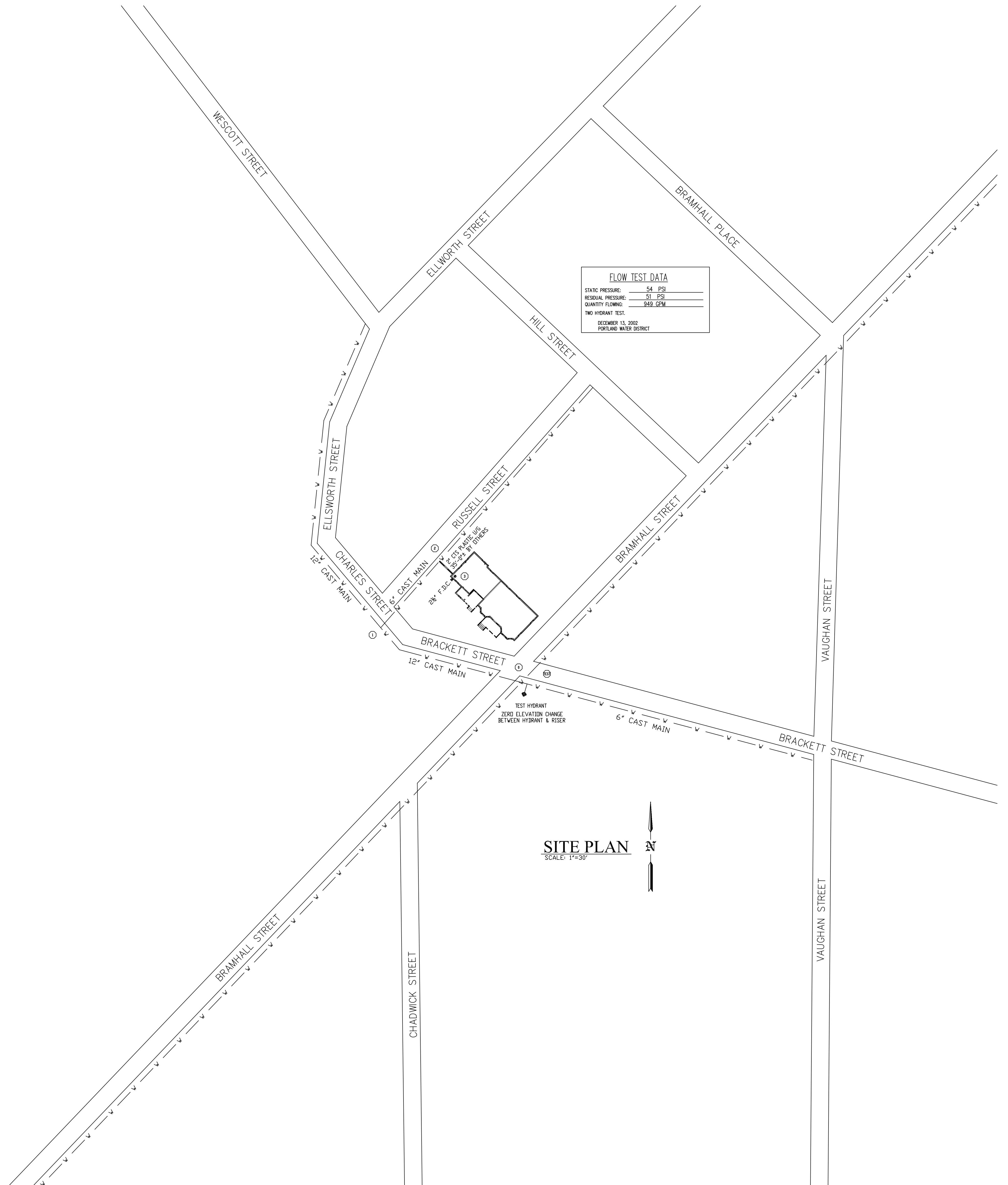
**GENERAL NOTES**

SYSTEM TO BE DESIGNED AND INSTALLED IN ACCORDANCE WITH NFPA-13R 2010.  
PIPE AND FITTINGS TO BE BLACK STEEL SCH. 40 TYPE AND SCH. 10 TYPE.  
ALL HANGERS TO BE SPACED IN ACCORDANCE WITH MANUFACTURER'S RECOMMENDATIONS.  
MAX SPACING OF RESIDENTIAL PENDENT SPRINKLERS TO BE 16'x16'.  
MAX SPACING OF 1ST FLOOR RESIDENTIAL SIDEWALL SPRINKLERS TO BE 16'x16'.  
MAX SPACING OF 2ND FLOOR RESIDENTIAL SIDEWALL SPRINKLERS TO BE 14'x14'.  
ALL WIRING OF DEVICES BY OTHERS.  
SPARE SPRINKLERS OF EACH TYPE SHALL BE PROVIDED PER NFPA 13.

SPRINKLERS MAY BE OMITTED FROM THE FOLLOWING:

- 1) BATHROOMS WHERE THE AREA DOES NOT EXCEED 55 SQ. FT. AND THE WALLS AND CEILINGS, INCLUDING BEHIND FIXTURES, ARE OF NON COMBUSTIBLE OR LIMITED COMBUSTIBLE MATERIALS PROVIDING A 15 MINUTE THERMAL BARRIER.
- 2) CLOTHES CLOSETS, LINEN CLOSETS, AND PANTRIES WITHIN THE DWELLING UNITS WHERE THE AREA OF THE SPACE DOES NOT EXCEED 24 SQ. FT. AND THE LEAST DIMENSION DOES NOT EXCEED 3 FT. AND THE WALLS AND CEILINGS ARE SURFACED WITH NON COMBUSTIBLE OR LIMITED COMBUSTIBLE MATERIALS AS DEFINED BY NFPA.
- 3) ANY PORCHES, BALCONIES, CORRIDORS, AND STAIRS THAT ARE OPEN AND ATTACHED.
- 4) ATTICS, PENTHOUSE EQUIPMENT ROOMS, CRAWL SPACES, FLOOR/CEILING SPACES, ELEVATOR SHAFTS, AND OTHER CONCEALED SPACES THAT ARE NOT USED OR INTENDED FOR LIVING PURPOSES OR STORAGE.

MAINTENANCE OF THE SPRINKLER SYSTEM IS THE RESPONSIBILITY OF THE OWNER.  
PROTECTION OF THE SPRINKLER SYSTEM AGAINST FREEZING IS THE RESPONSIBILITY OF THE OWNER.



REVISIONS	NOTES	HEAD COUNT											STANDARD SYMBOLS		STANDARD SYMBOLS		INSPECTIONS	
		SPRINKLER TYPE	IDENTIFICATION NO.	MFG.	ESC.	MODEL	FINISH	ORIFICE	TEMP.	SYMBOL	QUANT.					1.		2.
													- POST INDICATOR VALVE - KEY VALVE - FIRE HYDRANT - FIRE DEPT. CONNECTION - O.S. & Y GATE VALVE - SWING CHECK VALVE - NEW UNDERGROUND - EXIST UNDERGROUND	- ALARM CHECK VALVE - RISER W/ALARM VALVE - RISER W/DRY VALVE - RISER W/ELEC. FLOW SWITCH - RISER W/DELUGE VALVE - WATER MOTOR BELL - ELECTRIC BELL - FLUSH FIRE DEPT. CONNECTION	<p>RESponsible: [Signature]  MANAGING SUPERVISOR #348  CONTRACTOR LICENSE #295</p>	<p>11/14/13</p>		
		TOTAL SPRINKLERS THIS DRAWING																

BRACKETT HOUSE  
325 BRACKETT STREET  
PORTLAND, MAINE 04101

**FIRE PROTECTION PLAN**

FREEDOM FIRE PROTECTION, INC.  
209 QUAKER RIDGE ROAD  
CASCO, MAINE 04015

JOB No. M0148  
DATE 11/14/13  
DRAWN BY M/JN  
SCALE AS NOTED  
SHEET No. FP-1 of 2