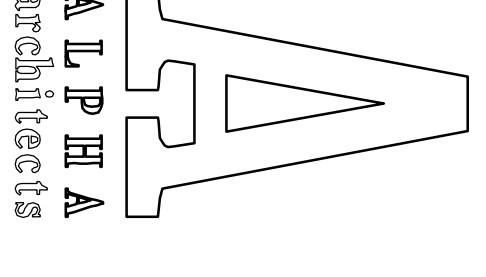


20 Hill Street

2 Family Residential



17 CHESTNUT STREET
 PORTLAND, ME 04101
 PHONE: 207.761.9500
 FAX: 207.761.9595
 design@alpharchitects.com

© COPYRIGHT
 Release or reproduction of the contents of
 this document is not permitted without
 written permission of ALPHA ARCHITECTS

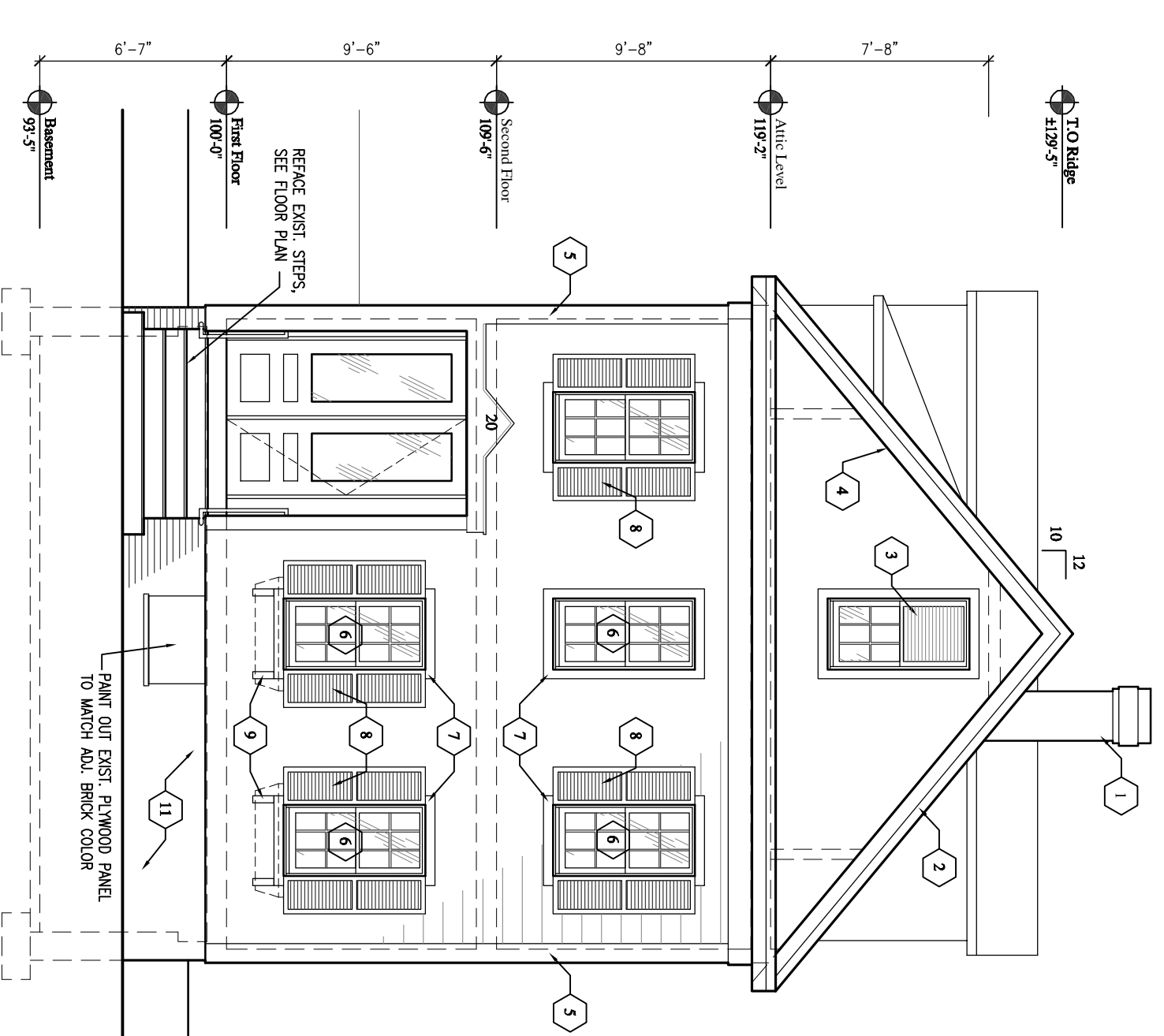
B.E.H Redevelopment Housing
20 Hill Street
Portland, ME 04101

JOB: 08010

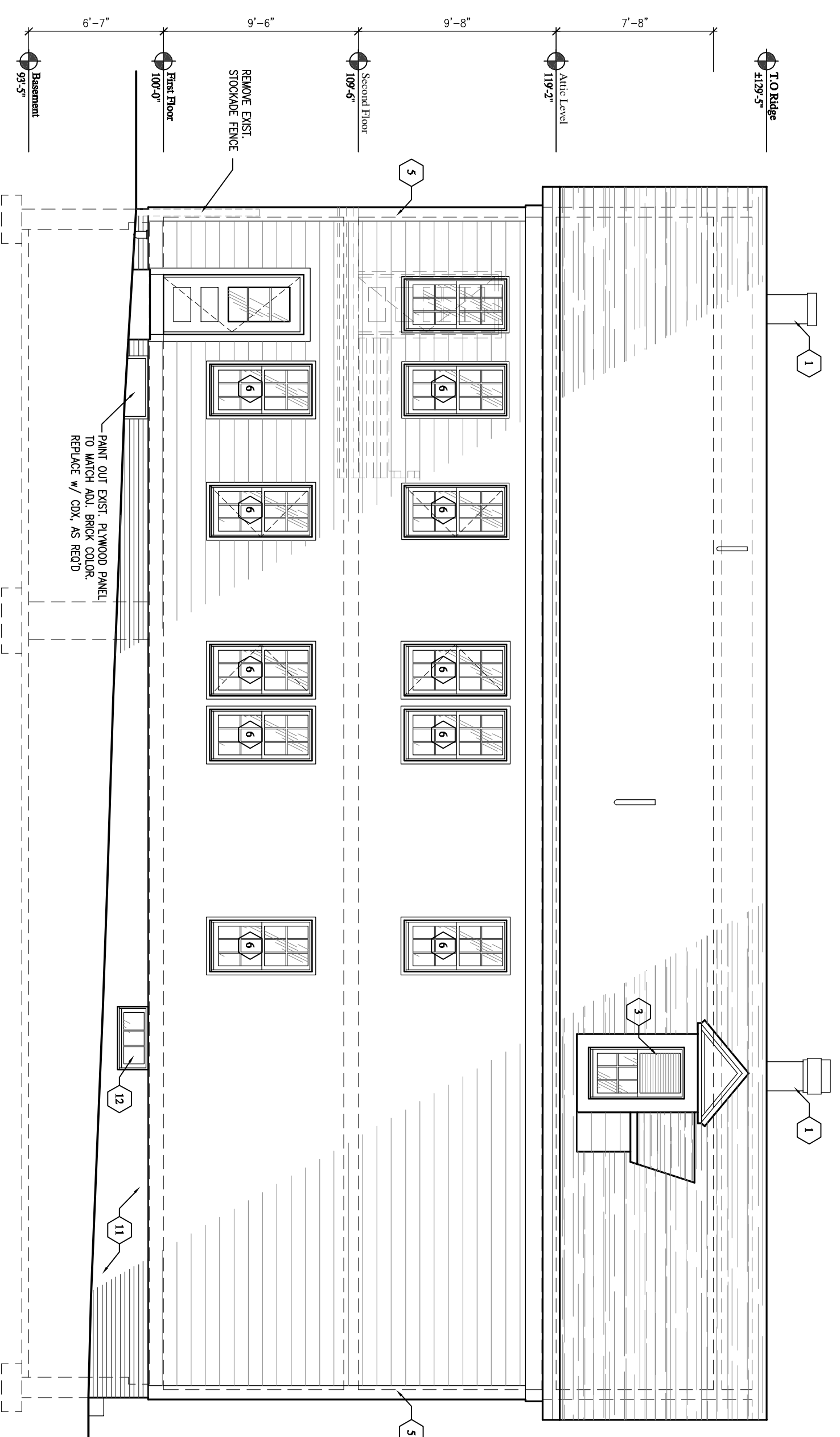
ISSUE DATE
PRELIM. 09-17-08
Board -
CDS -
REV. 1 -
REV. 2 -
PRINT 10-30-08

EXTERIOR
 ELEVATIONS

A2.0

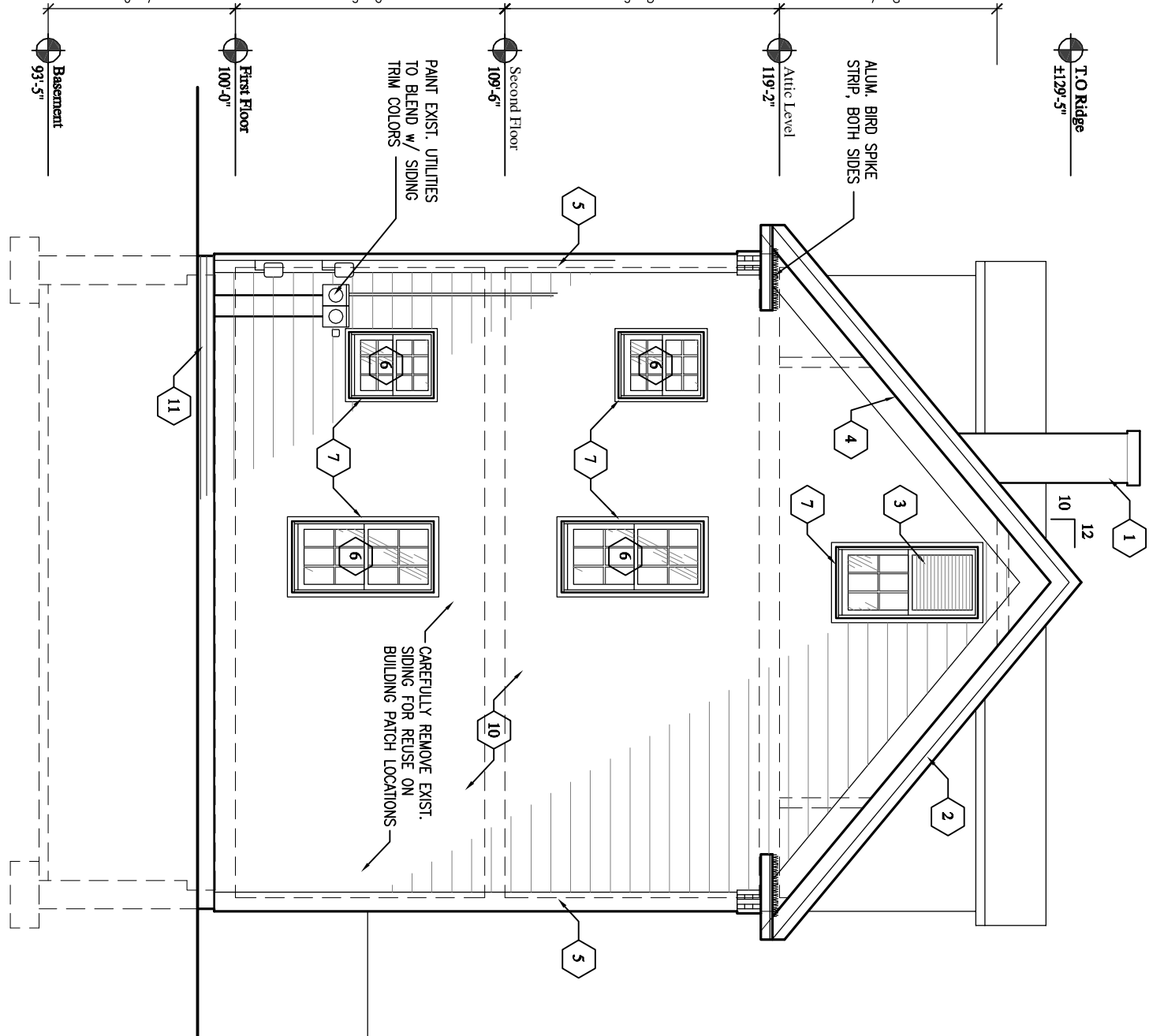


EXTERIOR ELEVATION
 SCALE: 3/16" = 1'-0"

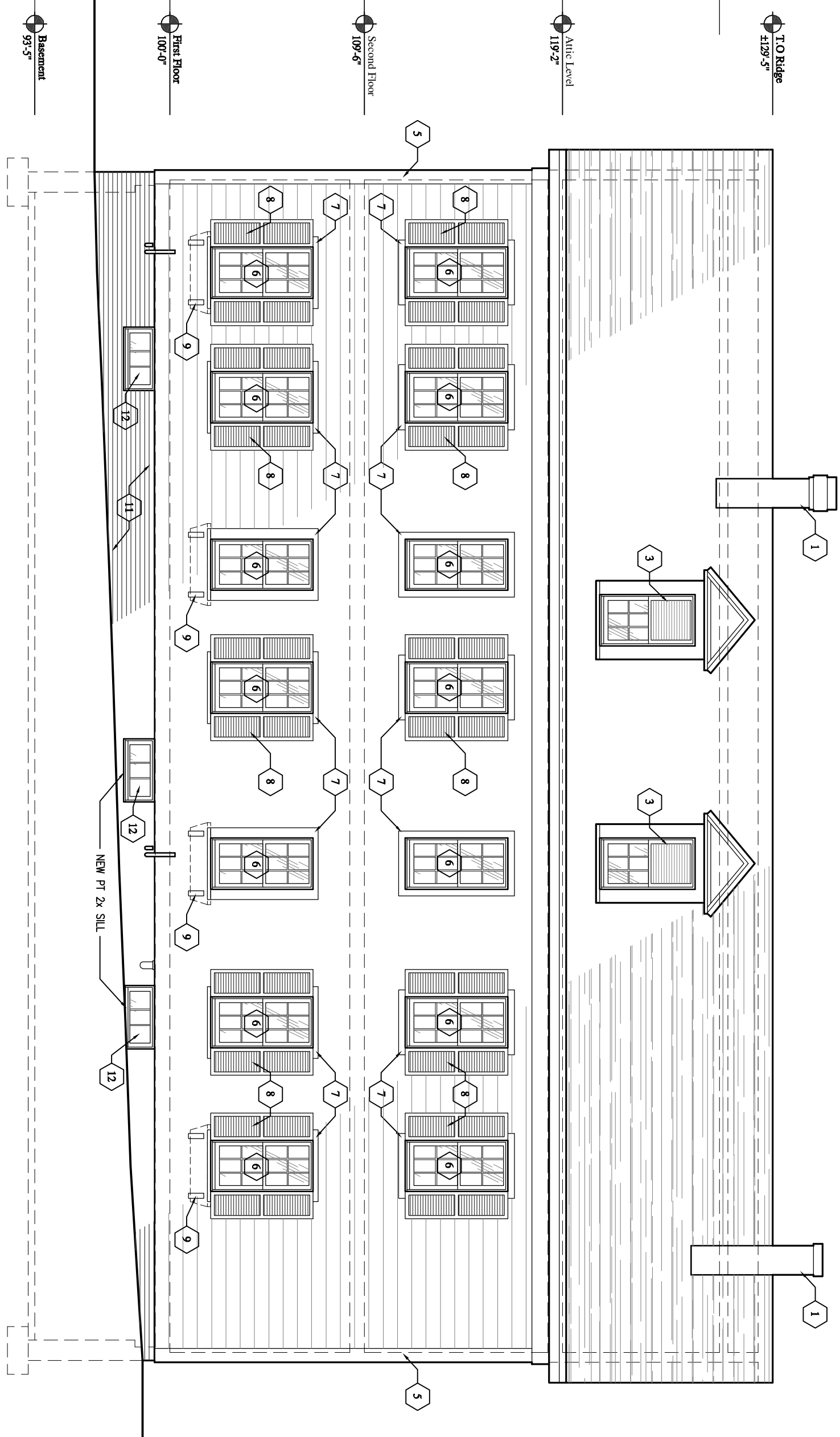


EXTERIOR ELEVATION
 SCALE: 3/16" = 1'-0"

- MATERIAL LEGEND:**
- 1 REPOINT & SEAL CHIMNEY, NEW CAP WASH
 - 2 WHITE BREAK METAL FASCIA
 - 3 REPOINT A NEW VENT INTO THE TOP SASH OF EXIST. ATTIC WINDOWS
 - 4 WHITE PERFORATED VINYL BEADBOARD SOFFIT
 - 5 NEW 'AZEK' 1x8 CORNER BOARDS
 - 6 NEW VINYL REPLACEMENT WINDOWS w/ SCREENS
 - 7 WHITE BREAK METAL TRIM
 - 8 NEW PAIR OF 16" x 60" VINYL WHITE SHUTTERS, AS SHOWN
 - 9 CUSTOM WINDOW BOX BRACKETS TO ALLOW FOR PERFORATED WINDOW BOX DROP-IN (TP, OF 6)
 - 10 NEW 7" TYP PRE-FINISHED CEMENT SHINGLE SYSTEM, TO MATCH EXIST. EXPOSURE (REAR ELEVATION ONLY)
 - 11 REPOINT & SEAL BRICK FOUNDATION WALL
 - 12 ADD NEW VINYL FIXED WINDOW w/ 1/2" HARDWARE CLOTH COVER IN 'AZEK' 1x3 FRAME, STAR-HEADED SCREW MOUNT



EXTERIOR ELEVATION
 SCALE: 3/16" = 1'-0"



EXTERIOR ELEVATION
 SCALE: 3/16" = 1'-0"

10-30-08