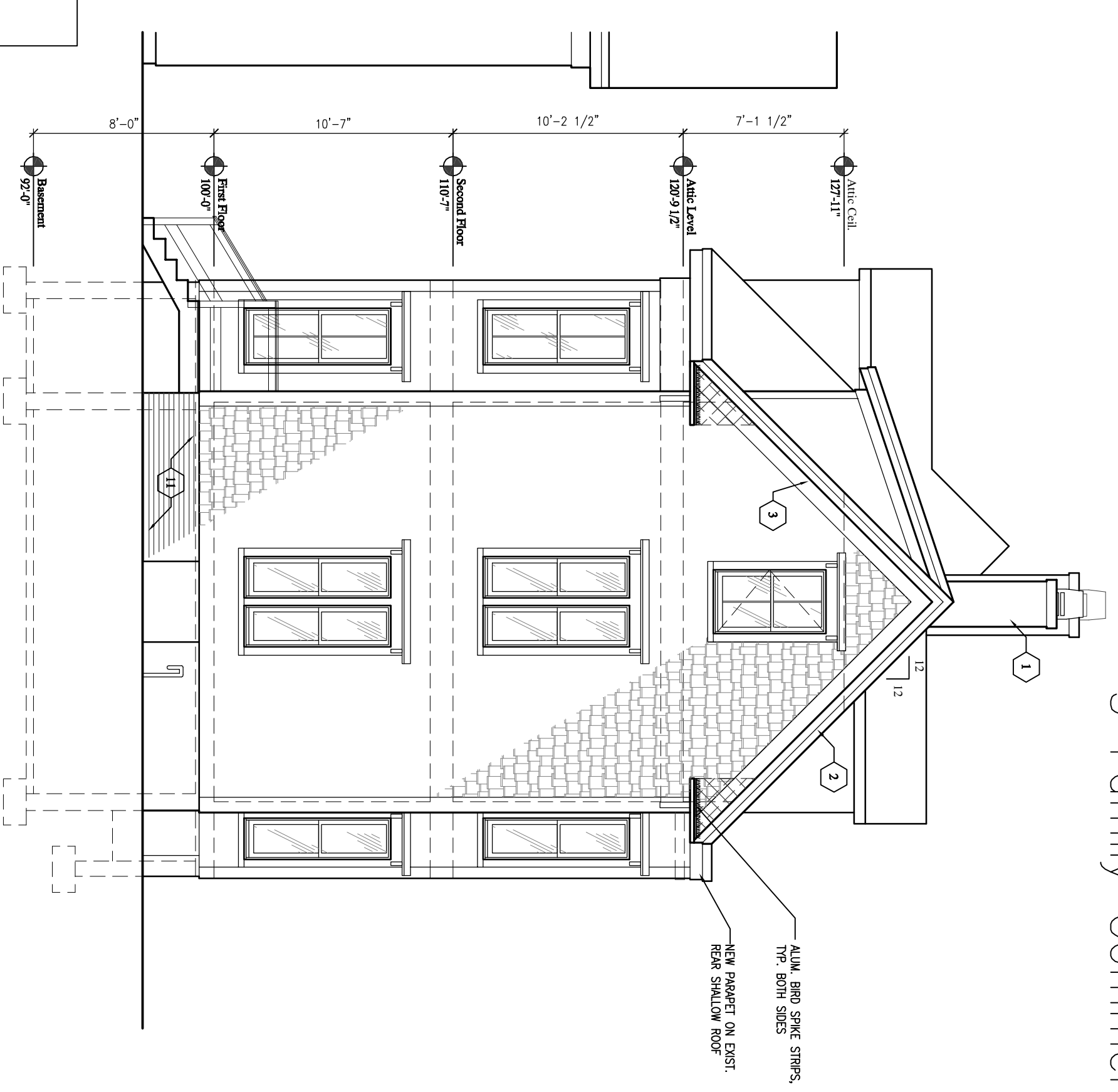
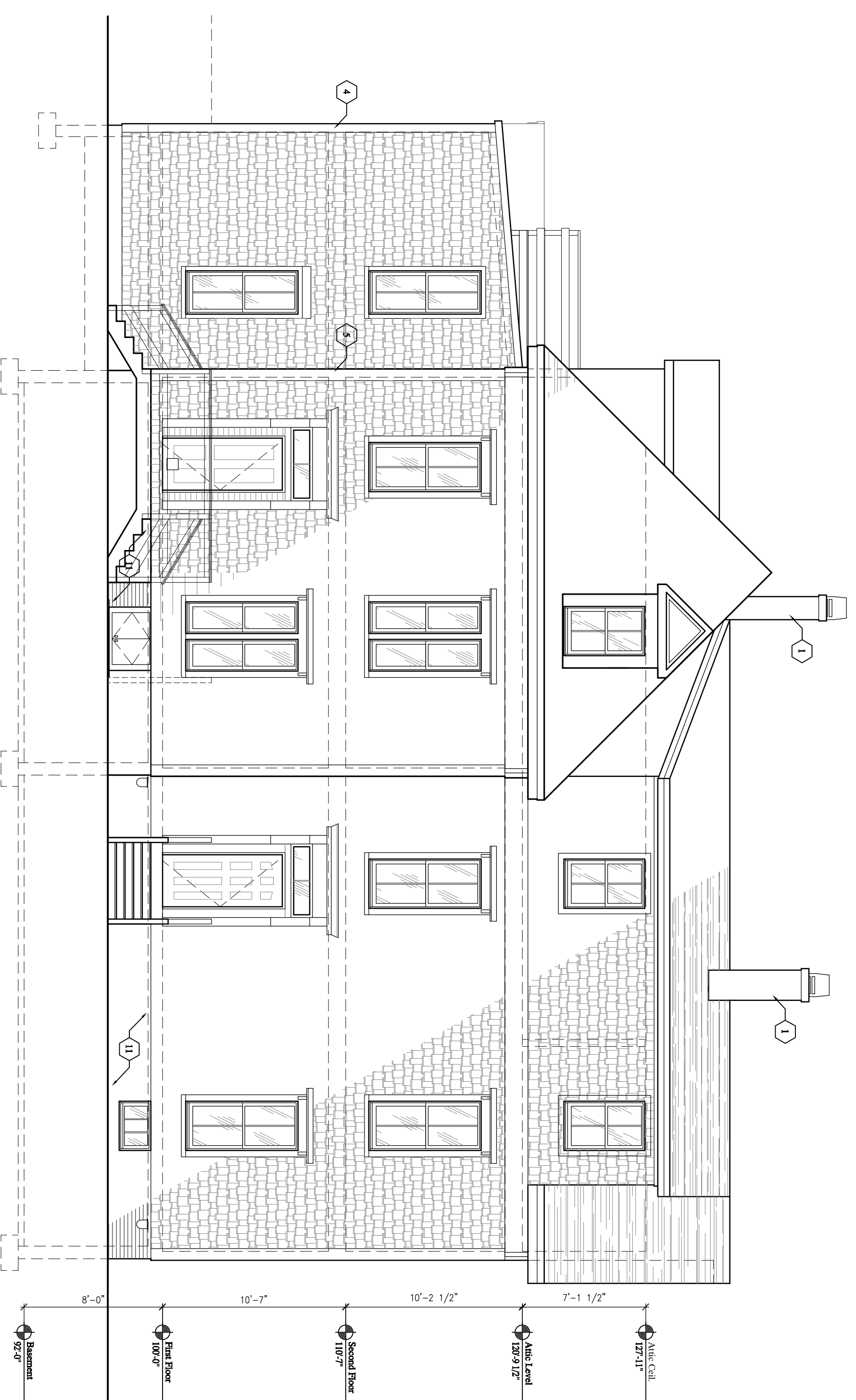


EXTERIOR ELEVATION
SCALE: 1/8" = 1'-0"

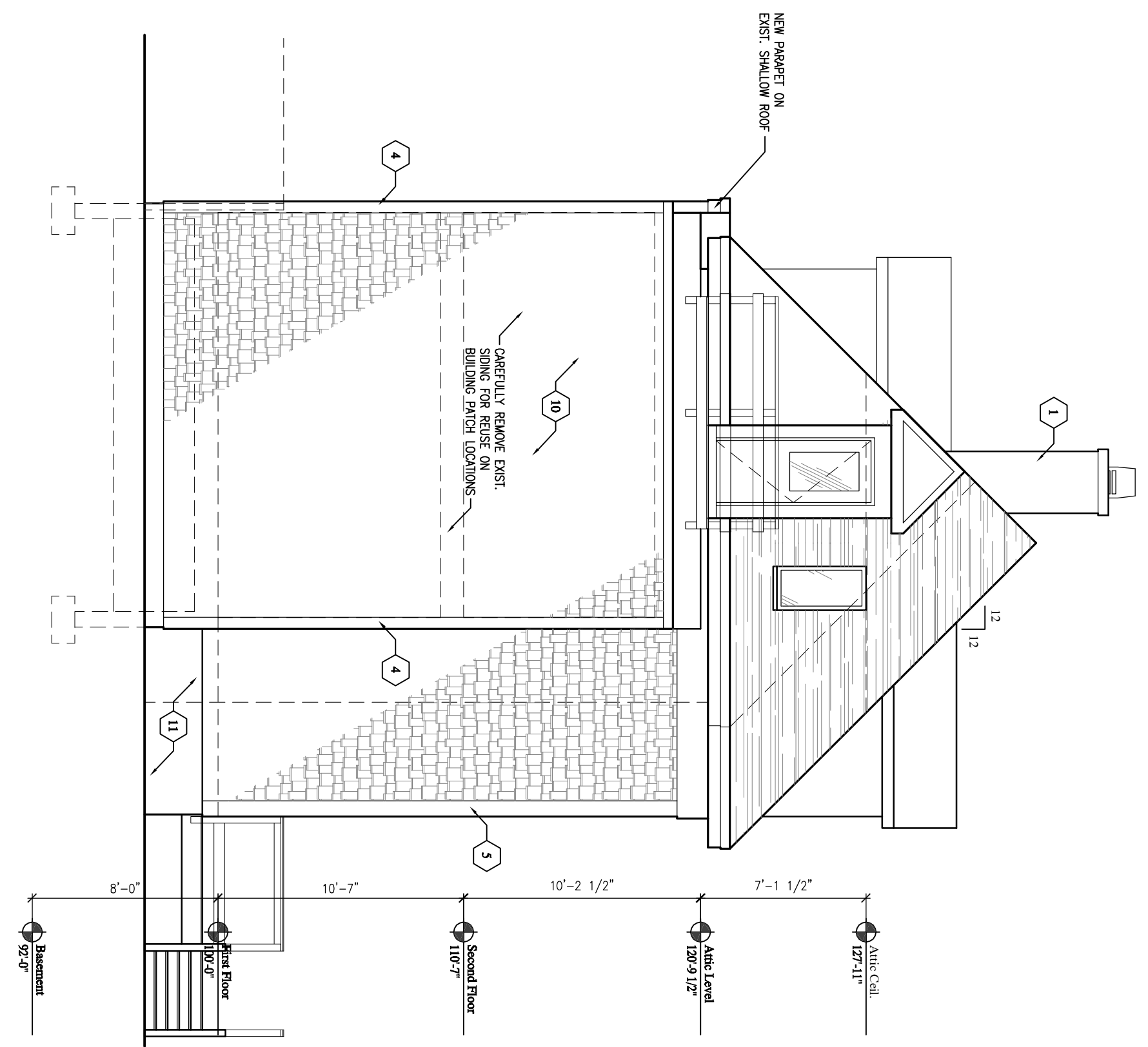


EXTERIOR ELEVATION
SCALE: 1/8" = 1'-0"

- MATERIAL LEGEND:**
- 1 REPOINT & SEAL CHIMNEY, NEW CAP WASH
 - 2 WHITE BREAK METAL FASCIA
 - 3 WHITE PERFORATED VINYL BEARBOARD SOFFIT
 - 4 NEW AZEK® 1x6 CORNER BOARDS
 - 5 NEW AZEK® 1x8 CORNER BOARDS
 - 6 NEW VINYL REPLACEMENT WINDOWS w/ SCREENS
 - 7 WHITE BREAK METAL TRIM
 - 8 NEW PAIR OF 16" x 60" VINYL WHITE SHUTTERS, AS SHOWN
 - 9 CUSTOM WINDOW BOX BRACKETS TO ALLOW FOR PREFABRICATED WINDOW BOX DROP-IN (TYP. OF 6)
 - 10 NEW 7" TYP. PRE-FINISHED CEMENT SHINGLE SYSTEM, TO MATCH EXIST. EXPOSURE (REAR ELEVATION ONLY)
 - 11 REPOINT & SEAL BRICK FOUNDATION WALL
 - 12 ADD NEW VINYL FIXED WINDOW w/ 1/2" HARDWARE CLOTH COVER IN AZEK® 1x3 FRAME STAR HEADED SCREW MOUNT



EXTERIOR ELEVATION
SCALE: 1/8" = 1'-0"



EXTERIOR ELEVATION
SCALE: 1/8" = 1'-0"

10-30-08

B.E.H Redevelopment Housing
32 Ellsworth Street
Portland, ME 04101

JOB: 08010

ISSUE DATE
PRELIM.
Board
CDS
REV. 1
REV. 2
PRINT

A2.0
EXTERIOR
ELEVATIONS