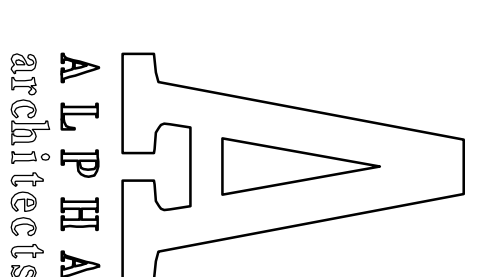


325 Brackett Street 2 Family Residential



17 CHESTNUT STREET
PORTLAND, ME 04101
PHONE: 207.761.9500
FAX: 207.761.9595
design@alpharchitects.com

© COPYRIGHT
Re-use or reproduction of the contents of this document is not permitted without the permission of ALPHA ARCHITECTS

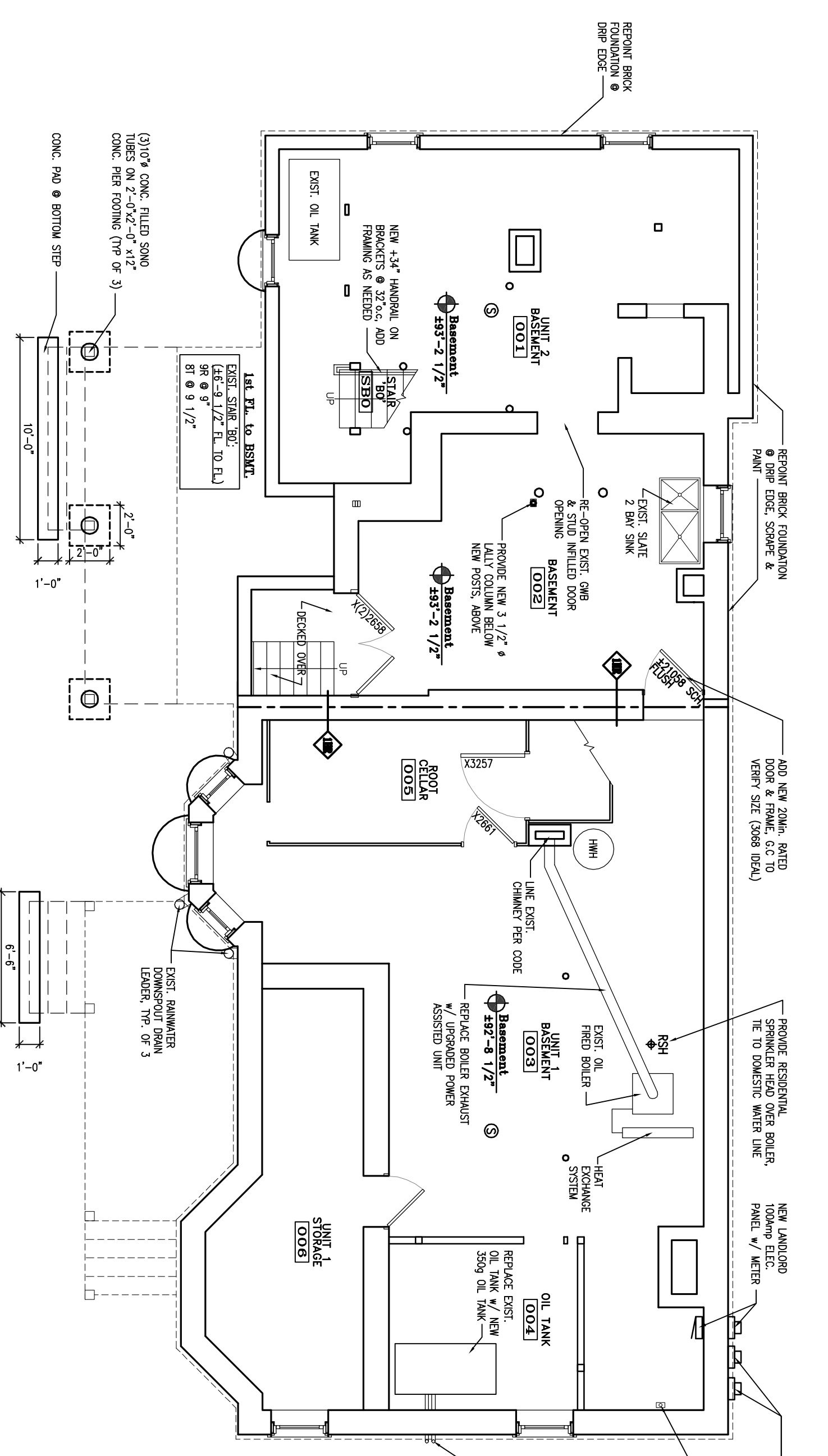
B.E.H Redevelopment Housing 325 Brackett Street Portland, ME 04101

JOB: 08010

ISSUE DATE	DESCRIPTION
PRELIM.	-
Board	-
CDS	-
REV. 1	-
REV. 2	-
PRINT	10-30-08

LIFE SAFETY
BASEMENT, 1st & 2nd FL.
& ROOF PLANS

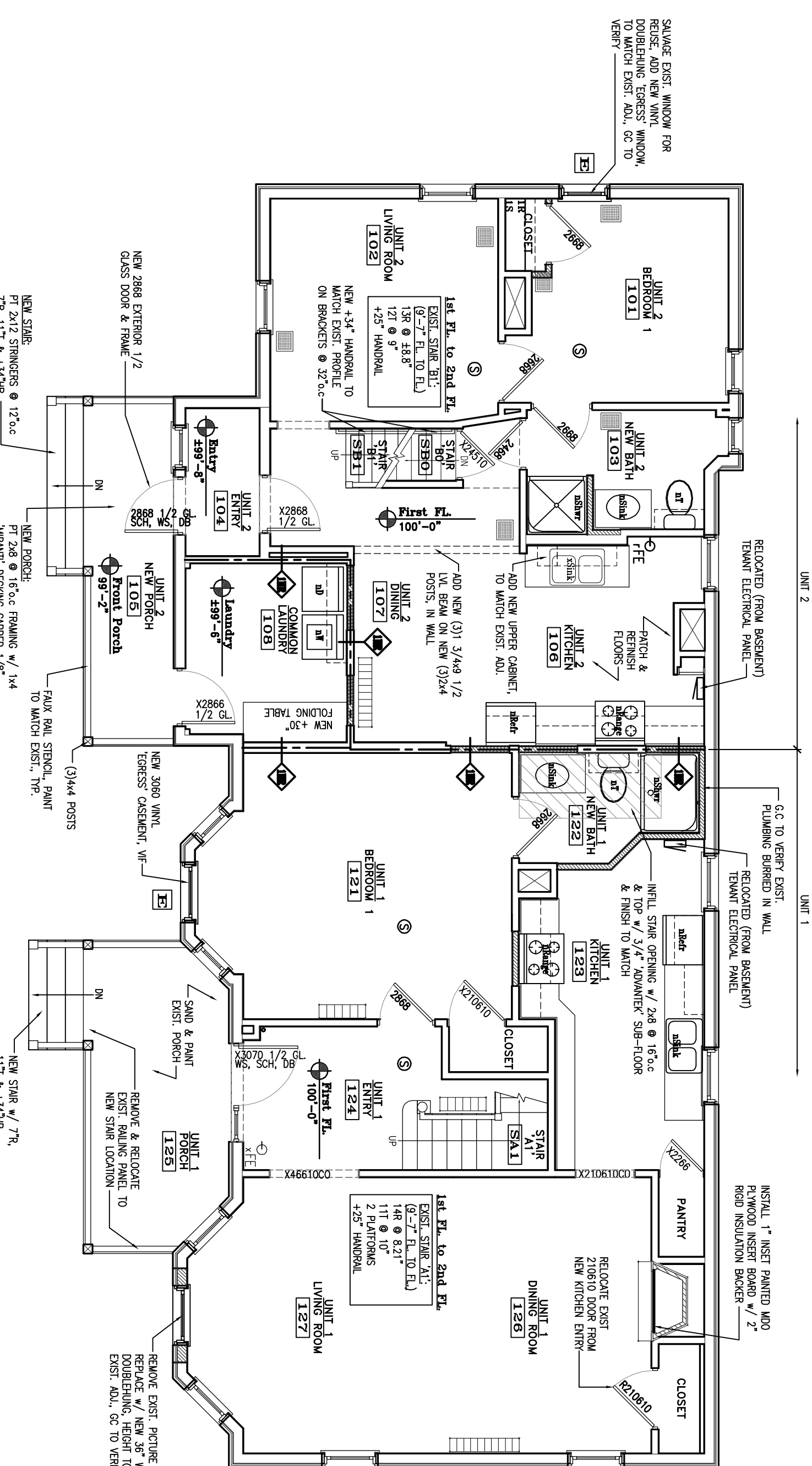
LS1.0



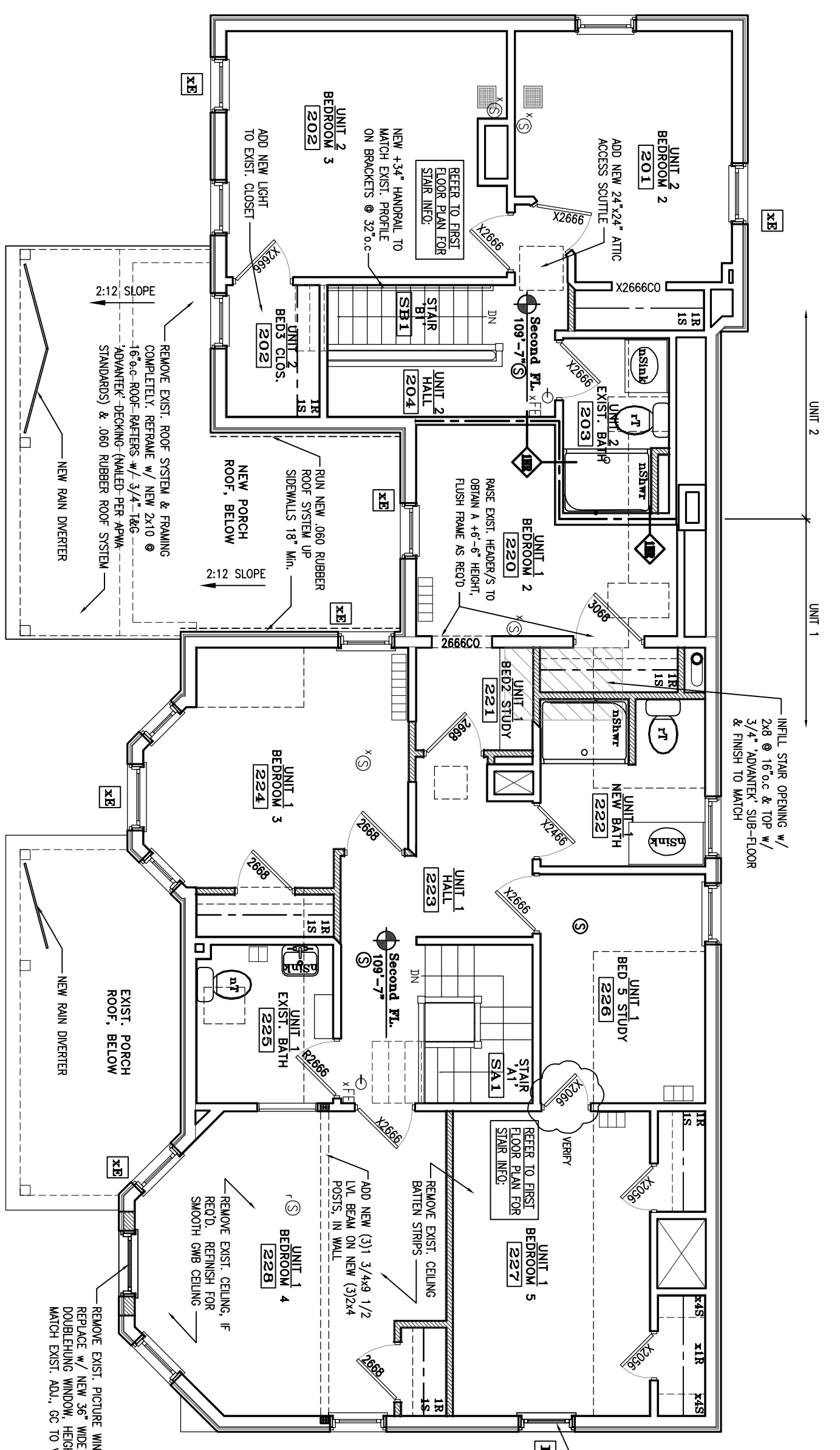
BASEMENT PLAN
SCALE: 3/16" = 1'-0"

- FIRE PROTECTION LEGEND**
- ☒ FIRE EXTINGUISHER 10# ABC
 - ☒ RESIDENTIAL SPRINKLER HEAD
 - ☒ SMOKE DETECTOR (CEILING)
 - ☒ COMBINATION LIGHT/EXHAUST FAN
 - ☒ FIRE ALARM MASTER CONTROL PANEL
 - ☒ EXTERIOR EXCESS LIGHT

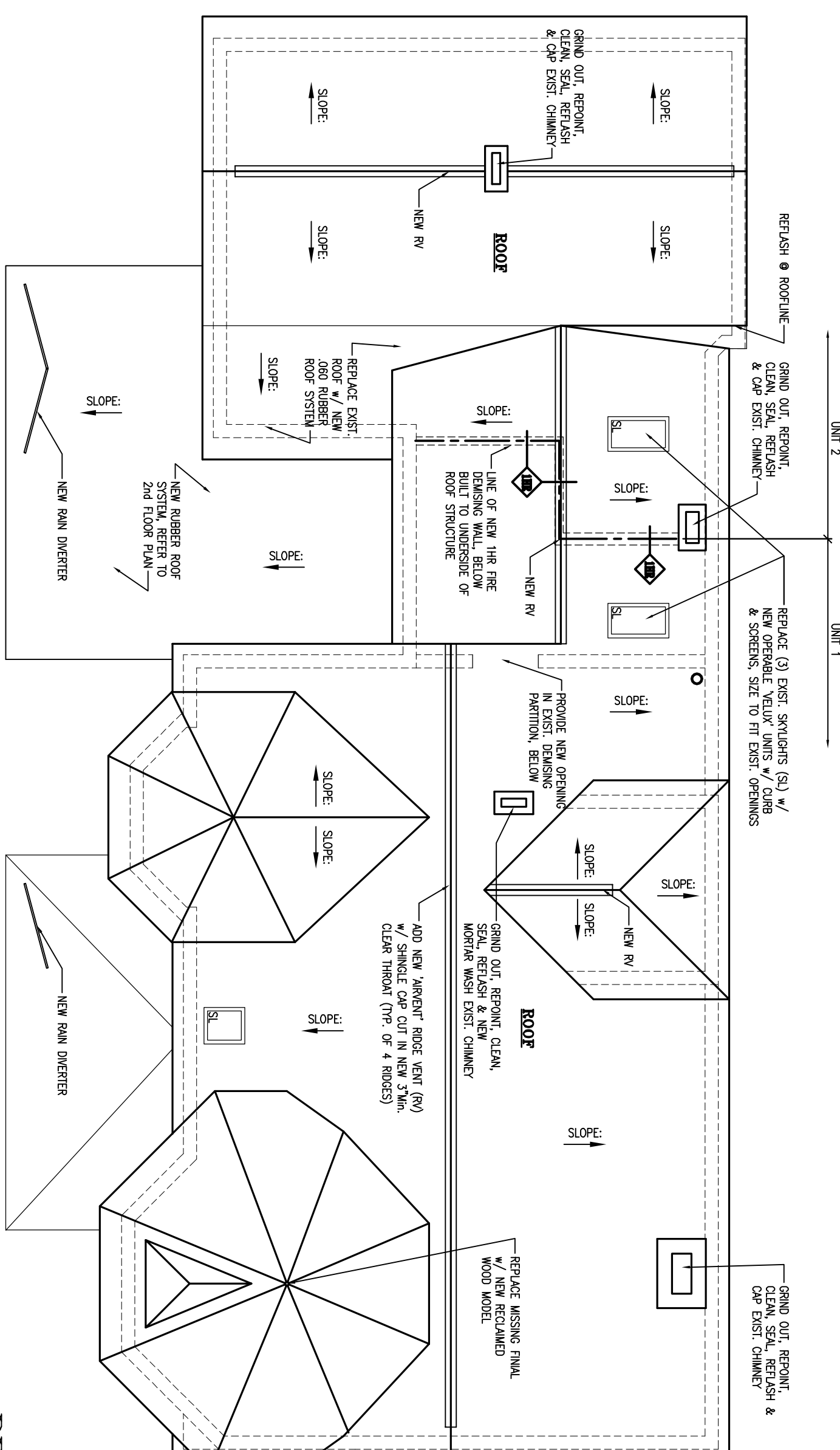
- ABBREVIATIONS:**
- CO = CASED OPENING
 - CL = DOOR CLOSER
 - SCH = SELF CLOSING HINGES
 - WS = WEATHER STRIPPING SYSTEM
 - DB = DEAD BOLT
 - BBC = BALL BEARING CENTER HINGE
 - SF =
- LIFE SAFETY NOTES:**
1. PROVIDE INTERCONNECTED SMOKE DETECTOR SYSTEM, MODIFY AS REQUIRED. SYSTEM TO BE HARDWIRED W/ BATTERY BACK-UP.



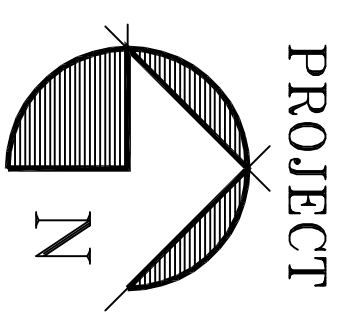
FIRST FLOOR PLAN
SCALE: 3/16" = 1'-0"



SECOND FLOOR PLAN
SCALE: 3/16" = 1'-0"



ROOF PLAN
SCALE: 3/16" = 1'-0"



10-30-08