



ALPHAarchitects
17 CHESTNUT STREET
PORTLAND, ME 04101
PHONE: 207.761.9500
FAX: 207.761.9595
design@alphaarchitects.com

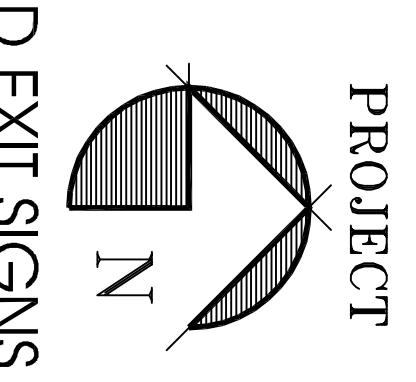
© COPYRIGHT
Reuse or reproduction of the contents of this document is not permitted without written permission of ALPHA ARCHITECTS



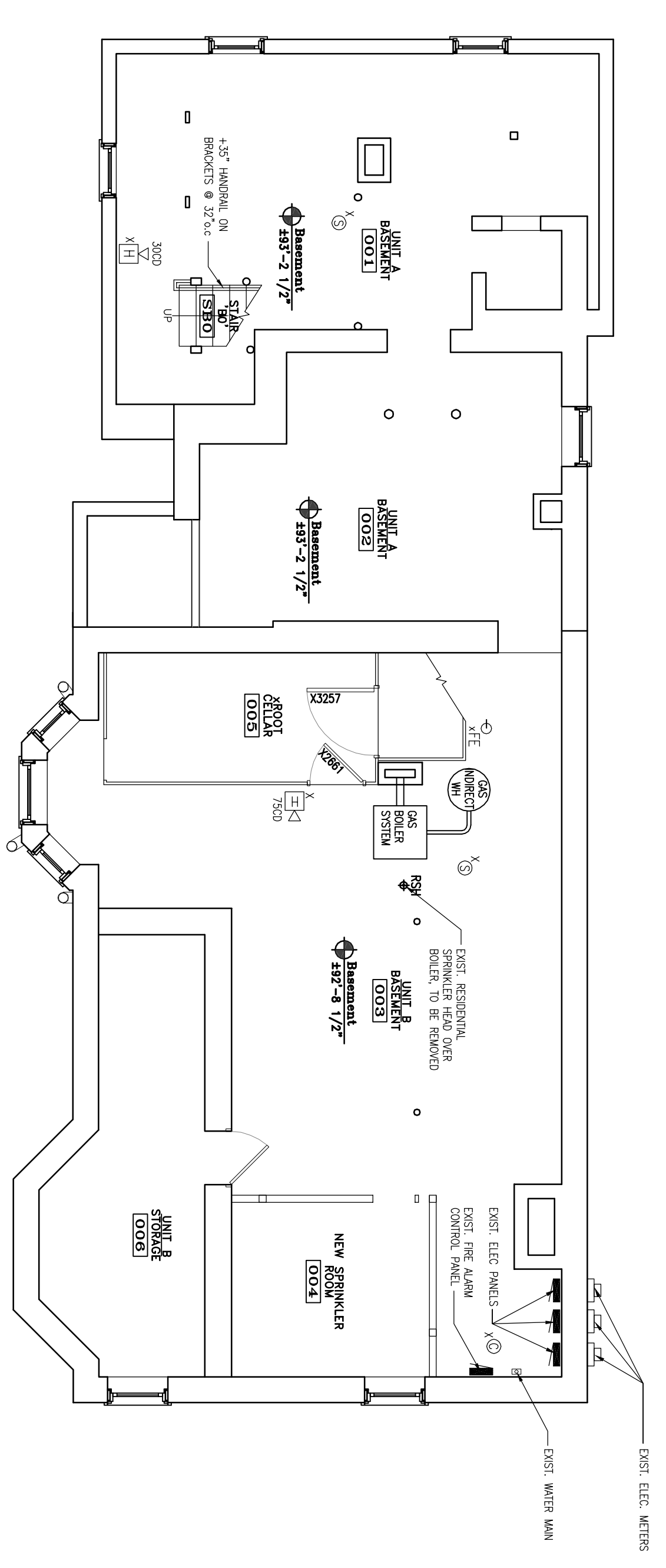
Bracket House
325 Brackett Street
Portland, ME 04101

JOB: 13132

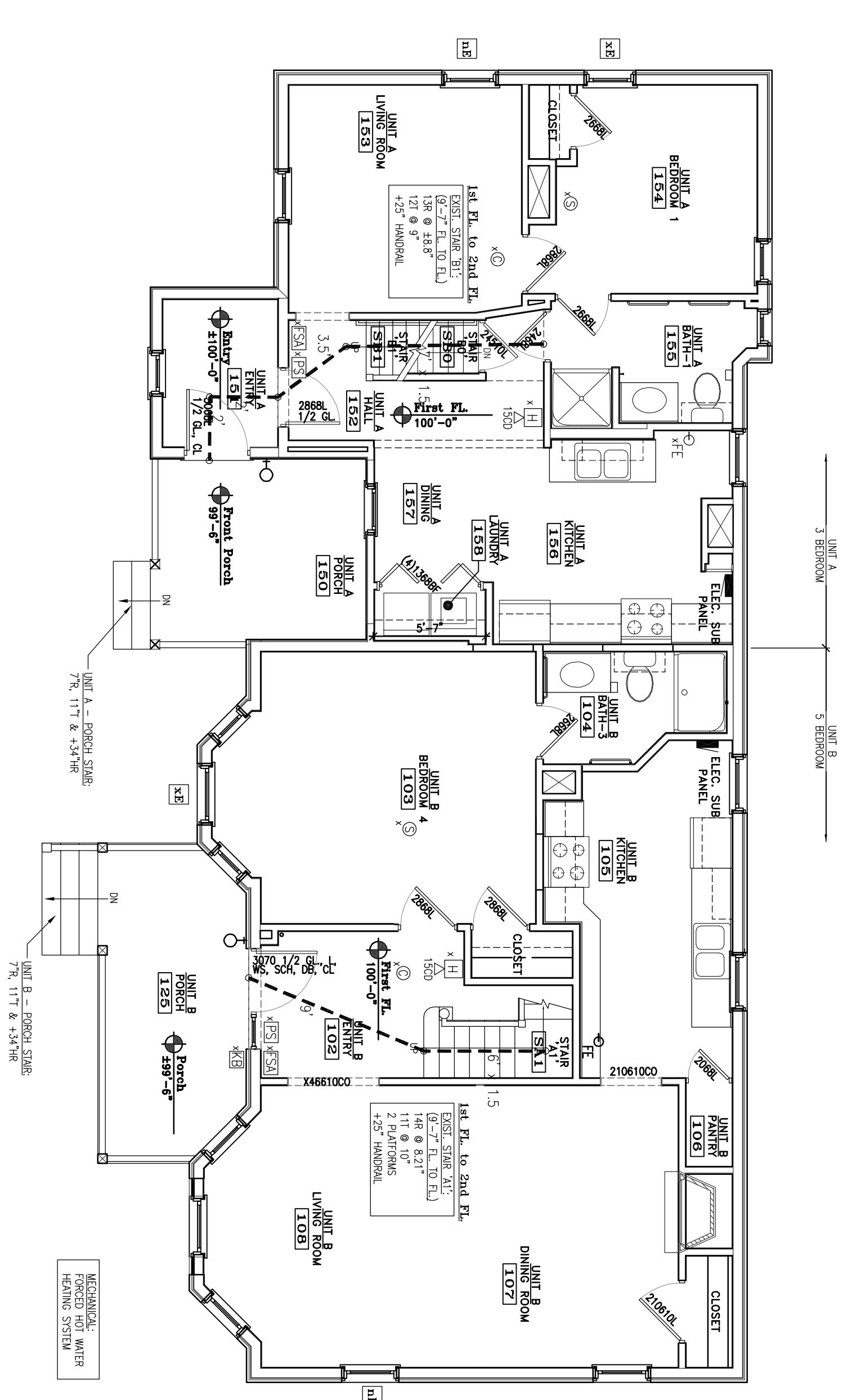
ISSUE DATE	ISSUE DATE
Preliminary	4-10-13
Permit	-
Pricing	-
REV. 1	1-22-14
REV. 2	1-27-14
CDS	1-27-14



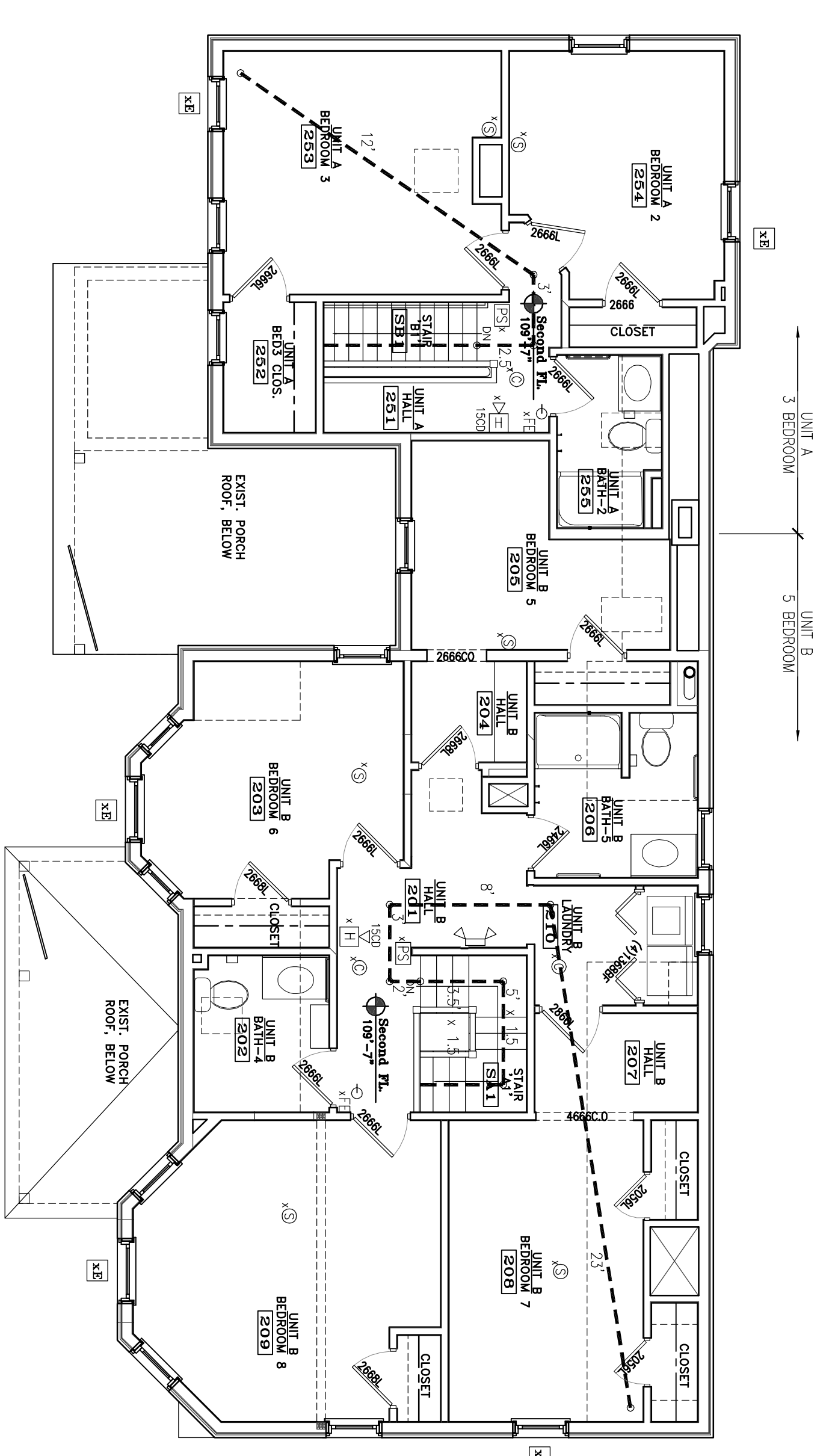
REV. 1 DELETE EMERGENCY LIGHTS AND EXIT SIGNS
REV. 2 RENAME UNITS CORRECTLY
325 Brackett Street 1-27-14



BASEMENT PLAN
SCALE: 3/16" = 1'-0"



FIRST FLOOR PLAN
SCALE: 3/16" = 1'-0"



SECOND FLOOR PLAN
SCALE: 3/16" = 1'-0"

EBC: See 705.3.1.(6.1)
Max. Travel Distance = 75'

UNIT A
7'x1.5' = 10.5' (SMR)
17.5'
± 7.5'
35.5' < 75' MAX

UNIT B
14.5'x1.5' = 21.75' (SMR)
15'
± 2.2'
66.75' < 75' MAX

ABBREVIATIONS:	FIRE PROTECTION LEGEND
OO = CASER OPENING	FE = FIRE EXTINGUISHER 10# ABC
CL = DOOR CLOSER	FE-K = FIRE EXTINGUISHER 10# K
SCH = SELF CLOSING HINGES	RSK = RESIDENTIAL SPRINKLER HEAD
MS = MEASURER STRIPPING SYSTEM	EL = EXIT LIGHT
DB = DOWN DOOR	STROBE = STROBE ONLY WITH CANDELLA RATING AS NOTED
L = LAMP LEVER	HA = HORN ALARM
BBC = BALL BEARING CENTER HINGE	DE = DUAL EMERGENCY LIGHT
	SE = SINGLE EMERGENCY LIGHT
	SD = SMOKE DETECTOR (CEILING)
	HD = HEAT DETECTOR (CEILING)
	CS = COMBO SMOKE/ CARBON MONOXIDE DETECTOR
	CLM = COMBINATION LIGHT/EXHAUST FAN
	CA = FIRE ALARM MASTER CONTROL PANEL
	PS = PULL STATION
	OE = EXTERIOR EGRESS LIGHT
	KA = NOT AN EXIT SIGN W/ RAISED BRILLE

LIFE SAFETY NOTES:

1. PROVIDE NFPA 101 13# SPRINKLER SYSTEM.
2. EXISTING INTERCONNECTED SMOKE DETECTOR SYSTEM.
3. PROVIDE NEW EMERGENCY LIGHTS AND EXIT SIGNS.
4. PROVIDE NEW PULL STATIONS AND HORN ALARMS PER NFPA 101.

NOTES:

1. ALL EMERGENCY LIGHTS MUST BE POWERED BY BATTERY BACK-UP OR GENERATOR PER NFPA 101.
2. HVAC PER NFPA 504
3. EMERGENCY LIGHTS TO AVERAGE 1' FOOTCANDLE AND 1' FOOTCANDLE MINIMUM.