

325 BRACKETT STREET GROUP LODGING

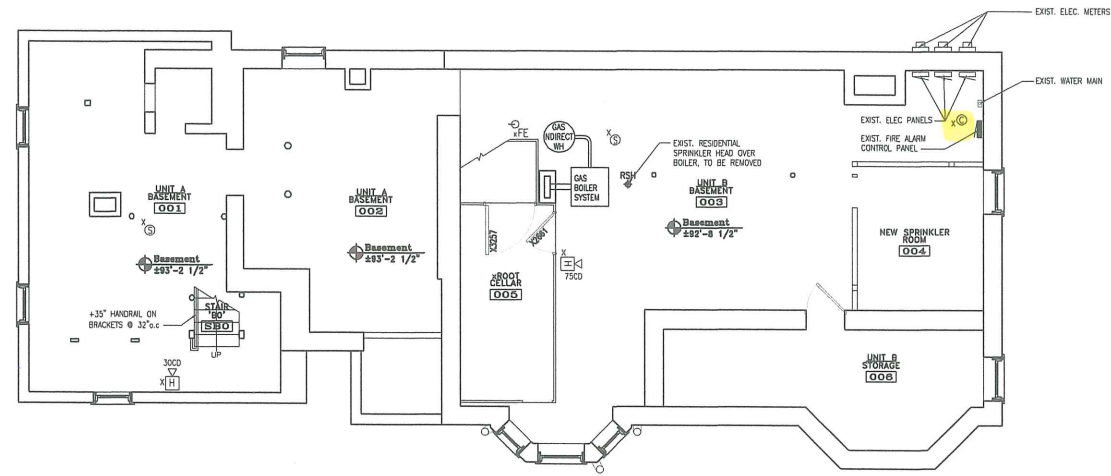


ALPHAarchitects
17 CHESTNUT STREET
PORTLAND, ME 04101
PHONE: 207.761.9500
FAX: 207.761.9595
design@alphaarchitects.com

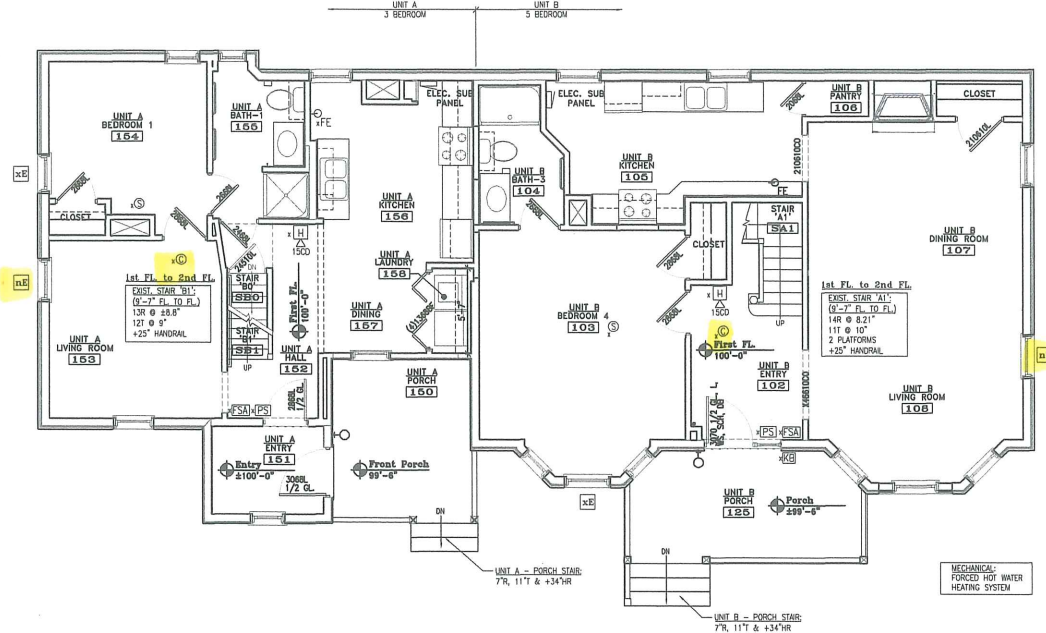
© COPYRIGHT
Reuse or reproduction of the contents of
this document is not permitted without
written permission of ALPHA ARCHITECTS



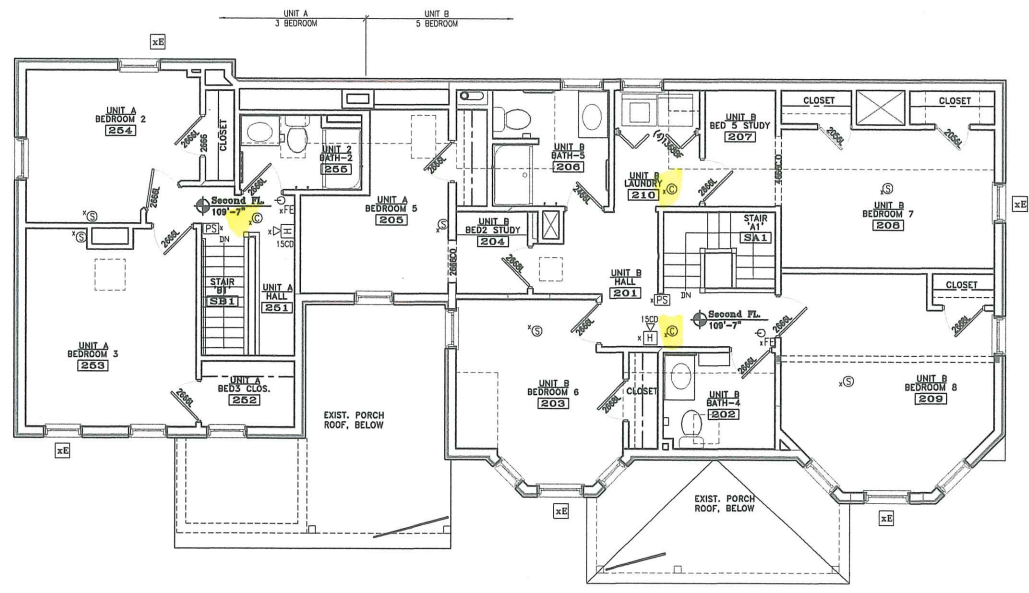
Brackett House 325 Brackett Street Portland, ME 04101



BASEMENT PLAN
SCALE: 3/16" = 1'-0"



FIRST FLOOR PLAN
SCALE: 3/16" = 1'-0"



SECOND FLOOR PLAN
SCALE: 3/16" = 1'-0"

ABBREVIATIONS:		FIRE PROTECTION LEGEND	
CO = CASD OPENING	r = REUSE/RELOCATE	FE = FIRE EXTINGUISHER 10# ABC	
CL = CASD CLOSER	x = EXISTING TO REMAIN	FE-K = FIRE EXTINGUISHER 10# K	
SCH = SELF CLOSING HINGES	n = NEW	RSH = RESIDENTIAL SPRINKLER HEAD	
WS = WEATHER STRIPPING SYSTEM		EXIT LIGHT	
DB = DEAD BOLT		STROBE ONLY WITH CANDELLA RATING AS NOTED	
L = ADA LEVER		HORN ALARM	
BBC = BALL BEARING CENTER HINGE		DUAL EMERGENCY LIGHT	
SF =		SINGLE EMERGENCY LIGHT	
		SMOKE DETECTOR (CEILING)	
		HEAT DETECTOR (CEILING)	
		COMBO SMOKE/ CARBON MONOXIDE DETECTOR	
		COMBINATION LIGHT/EXHAUST FAN	
		FIRE ALARM MASTER CONTROL PANEL	
		PULL STATION	
		EXTERIOR EGRESS LIGHT	
		N.A.B. 'NOT AN EXIT' SIGN W RAISED BRILLE	

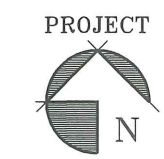
LIFE SAFETY NOTES:

- PROVIDE NFPA 101 130 SPRINKLER SYSTEM.
- PROVIDE ADDITIONAL INTERCONNECTED COMBO SMOKE / CARBON MONOXIDE DETECTOR SYSTEM.
- CONVERT LIVING (1) LIVING ROOM WINDOW TO EGRESS CASEMENT PER PLANS.

NOTES:

- ALL EMERGENCY LIGHTS MUST BE POWERED BY BATTERY BACK-UP OR GENERATOR PER NFPA 101.
- HVAC PER NFPA 90A
- EMERGENCY LIGHTS TO AVERAGE 1 FOOTCANDLE AND .1 FOOTCANDLE MINIMUM.

RECEIVED
JAN 15 2014
Dept. of Building Inspections
City of Portland Maine



01-17-13

JOB: 08010

ISSUE DATE	
Preliminary	01-07-13
Permit	-
Pricing	-
REV. 1	-
REV. 2	-
CD's	01-17-13

LIFE SAFETY
BASEMENT, 1st & 2nd FL.
& ROOF PLANS
LS1.0