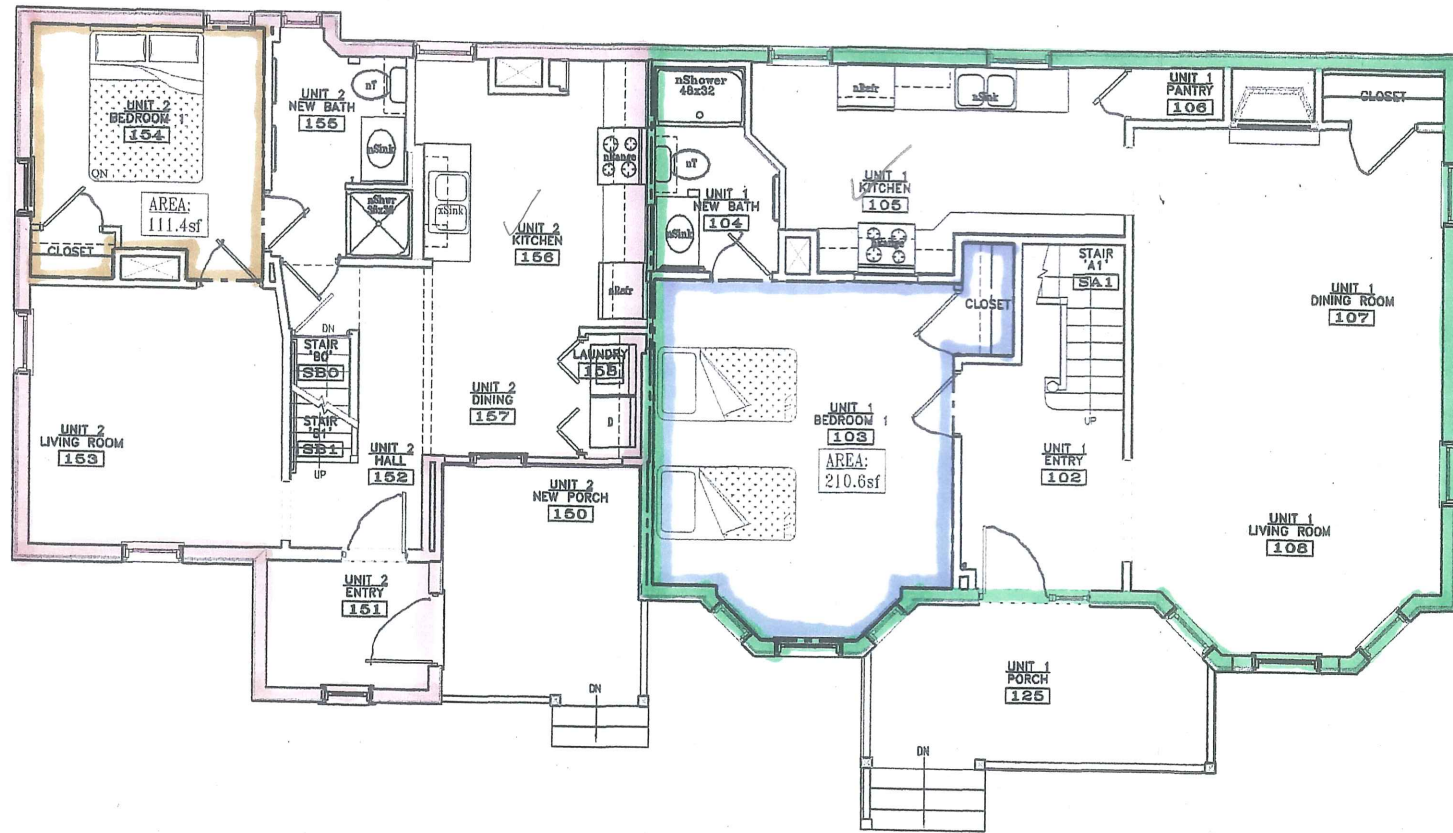
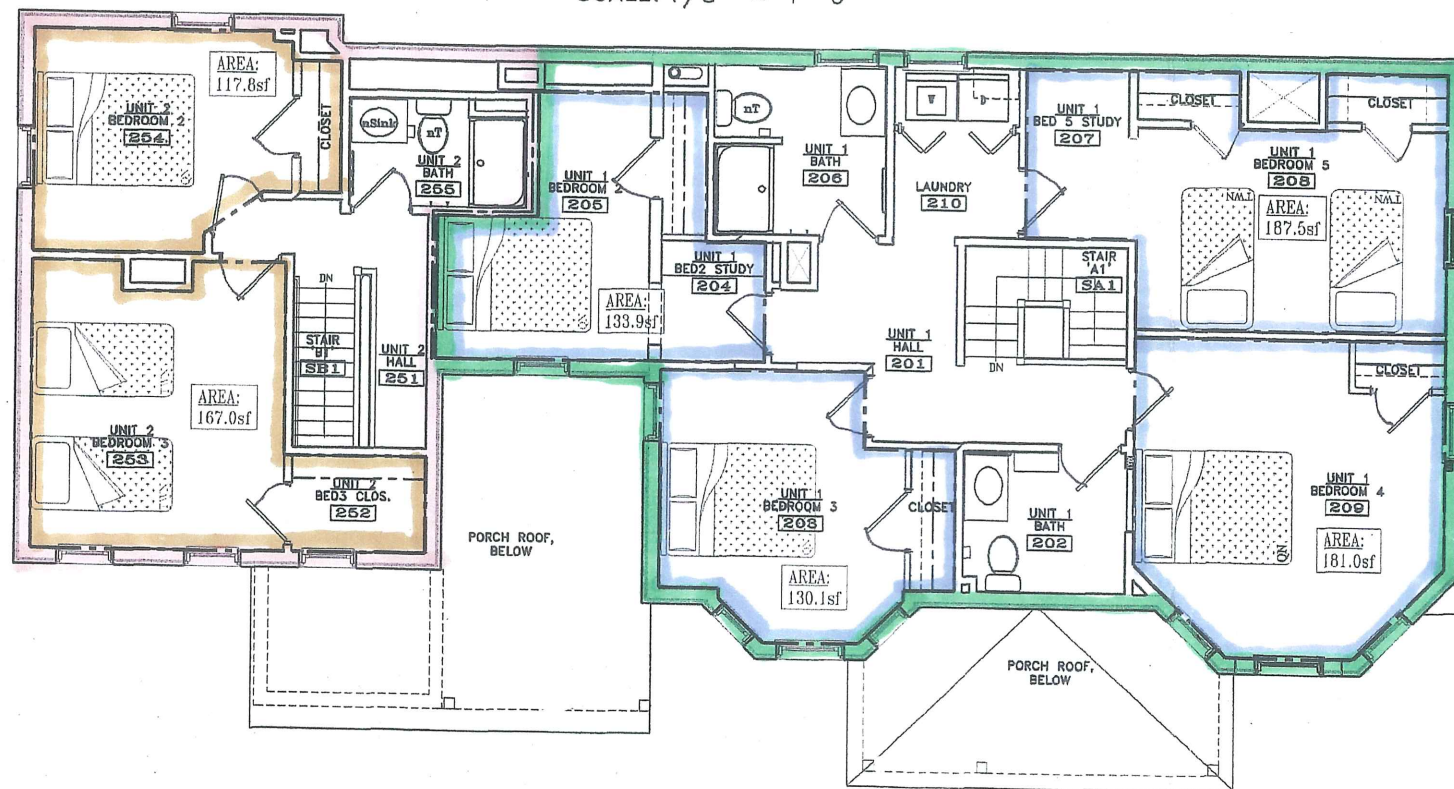


PROJECT



FIRST FLOOR PLAN

SCALE: 1/8" = 1'-0"



SECOND FLOOR PLAN

SCALE: 1/8" = 1'-0"

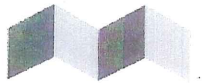
Whole building 1st floor - 16325
2nd floor - 15425

$$8 \times 200 = \frac{3175}{-1600} = 1575$$

AREAS:	UNIT 1:	UNIT 2:
FIRST FLOOR:	939.7sf	692.8sf
SECOND FLOOR:	1054.0sf	488.5sf
TOTAL:	1993.7sf	1181.3sf
(CODE Min./D.Unit)	(1000.0sf)	(1000.0sf)
UNIT 1:		
✓ -BEDROOM 1:	210.6sf	
✓ -BEDROOM 2:	133.9sf	
✓ -BEDROOM 3:	130.1sf	
✓ -BEDROOM 4:	181.0sf	
✓ -BEDROOM 5:	187.5sf	
(CODE Min./BR)	(80.0sf)	
UNIT 2:	843.1	
✓ -BEDROOM 1:		111.4sf
✓ -BEDROOM 2:		117.8sf
✓ -BEDROOM 3:		167.0sf
(CODE Min./BR)		(80.0sf)
OVERALL SF/BR	398.6sf Avg.	393.6sf Avg.
(CODE Min.)	(200.0sf)	(200.0sf)

LOT SIZE:

-331 BRACKETT ST:	2151sf
-325 BRACKETT ST:	2882sf
TOTAL:	5033sf
(Min LOT SIZE Req'd)	(4500sf)



ALPHA architects
17 CHESTNUT STREET
PORTLAND, ME 04101
PHONE: 207.761.9600
FAX: 207.761.9696
design@alphaarchitects.com

COPYRIGHT
Reuse or reproduction of the
contents of this document is not
permitted without written permission
of ALPHA ARCHITECTS

PRELIMINARY:
NOT FOR
CONSTRUCTION

Brackett St. Lodging
325 Brackett Street
Portland, ME. 04011

JOB: 12152

ISSUE DATE	
PRELIM.	09-11-12
PBoard	-
CD's	-
REV. 1	-
REV. 2	-
PRINT	09-11-12

FIRST &
SECOND FLOOR
AREA PLANS

A-1

09-11-12