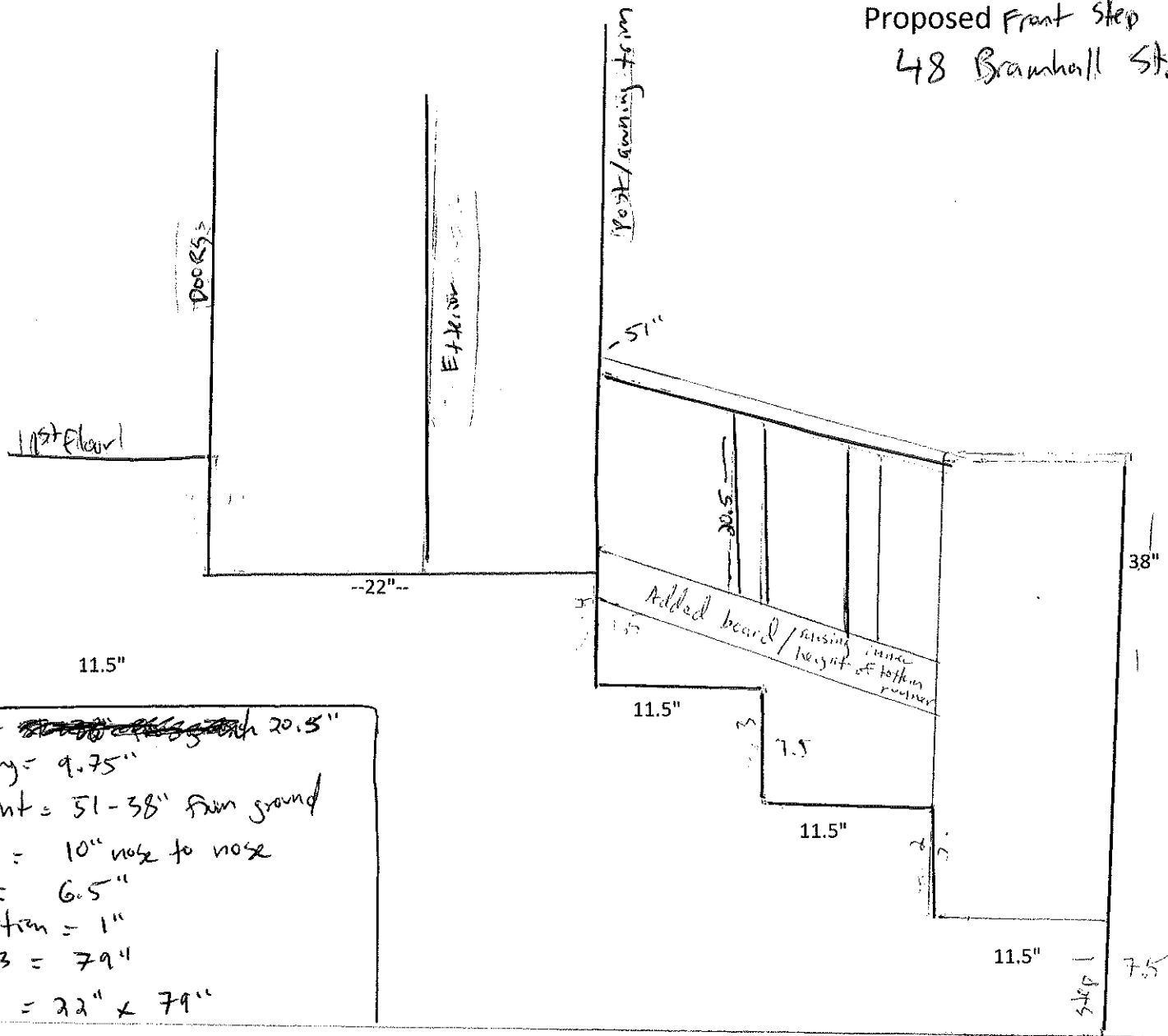


Proposed Front Step Design  
 48 Bramhall St, Portland 04102

Scale/Inches  
 1/8" = 1"



Further Specs

Guardrail height = ~~20.5"~~ 20.5"  
 Baluster spacing = 9.75"  
 Handrail height = 51-38" from ground  
 tread depth = 10" nose to nose  
 riser height = 6.5"  
 nosing projection = 1"  
 width of stairs = 79"  
 Landing size = 22" x 79"

Changes:

1. brings step down to street flush with exterior of newel post
2. extends landing step under awning
3. heightens inside bottom runner of ceiling to accommodate new horizontal pitch of steps