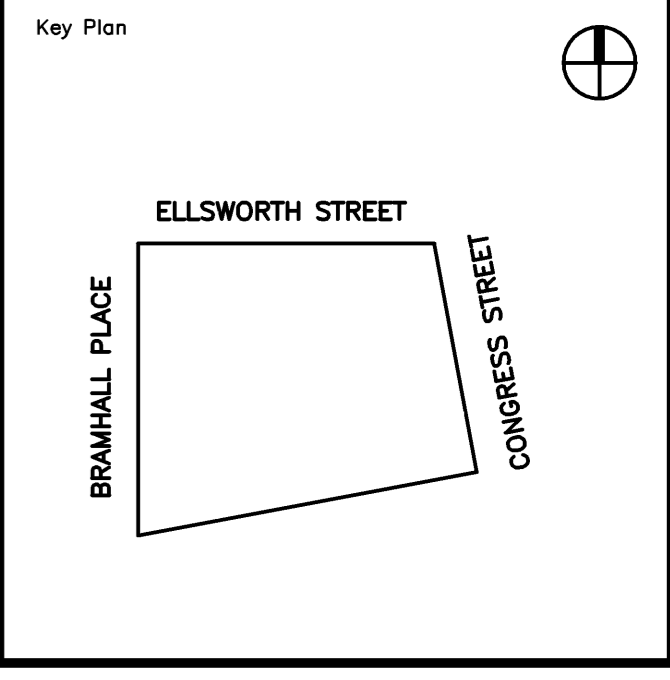
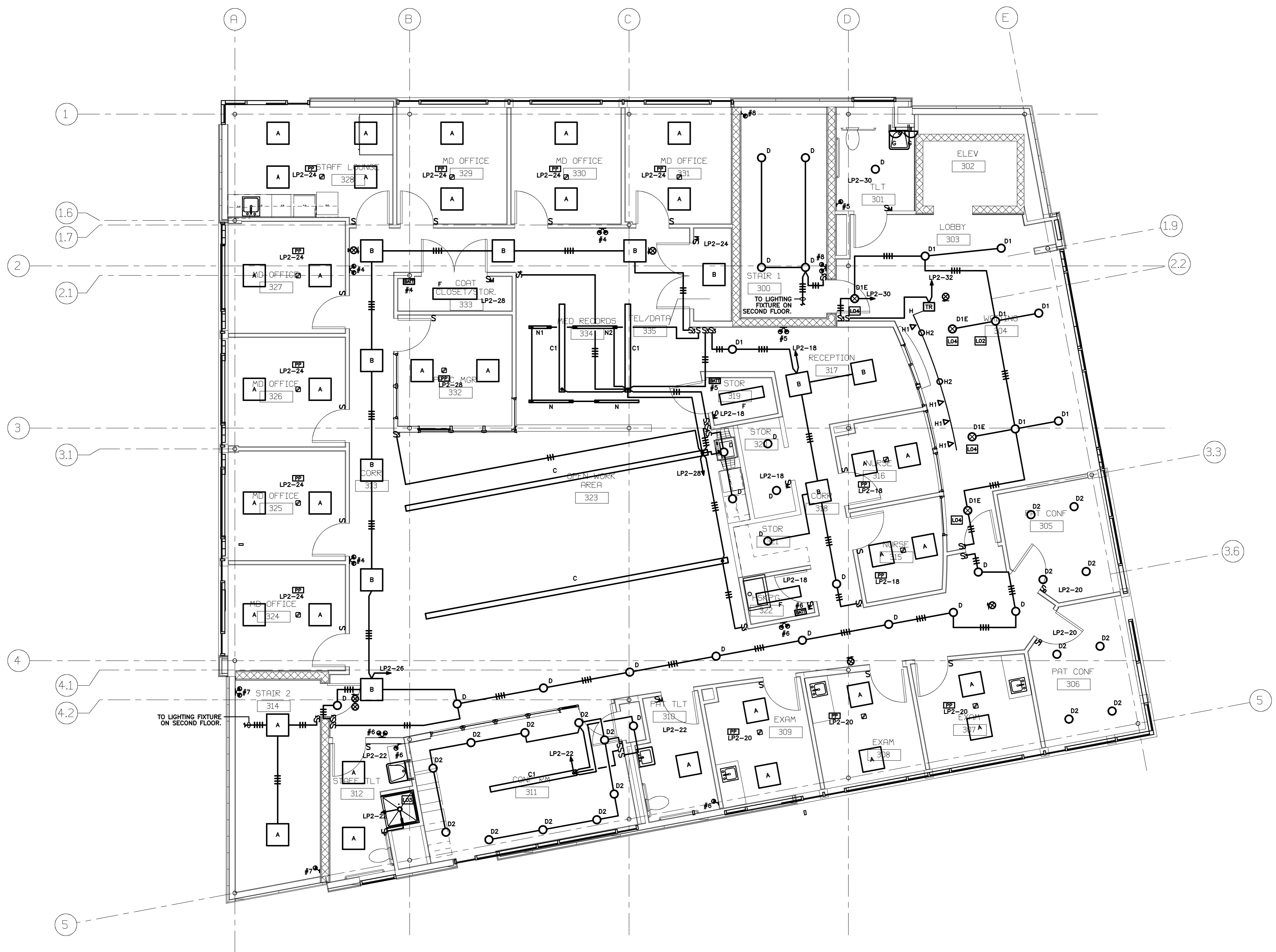


Project Title
**MAINE HEART SURGICAL ASSOC.
 NEW OFFICE BLDG.**
 PORTLAND, ME

HA Project No. **04180**



KEY NOTES:
 L02: LOW VOLTAGE TRANSFORMER. MOUNT ABOVE AN ACCESSIBLE CEILING. (TYPICAL)
 L03: LIGHT FIXTURE FURNISHED WITH SHOWER UNIT. INSTALLED AND WIRED UNDER DIVISION 16.
 L04: FOR EMERGENCY BATTERY PACK PROVIDE UNSWITCHED CIRCUIT.



| Mark | Date | Description |
|------|----------|----------------|
| - | 04-28-05 | ISSUED FOR BID |
| - | 04-11-05 | 100% REVIEW |
| - | 01-10-05 | DD REVIEW |

Issue Dates

Drawing Status

Drawing Title
**THIRD FLOOR
 PLAN - LIGHTING**

PA / PE: **PRM** Drawn By: **JMB/KRM**

Drawing Number