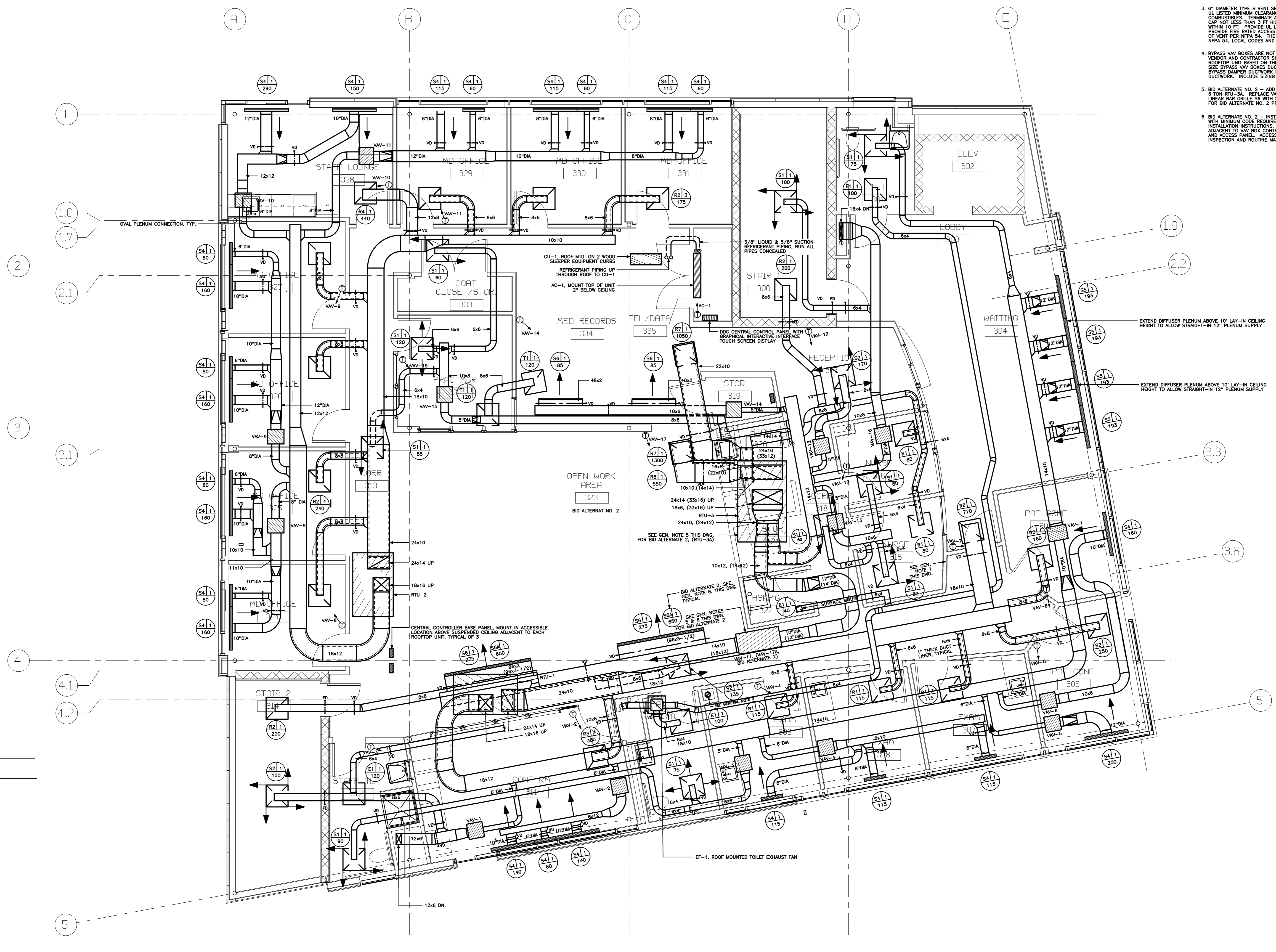


- GENERAL NOTES:
- INSTALL 16"x12" WALL MOUNTED ACCESS PANEL ABOVE CEILING ADJACENT TO BALANCING DAMPERS. COORDINATE WITH BALANCING AND CHECKERBOARD CONTRACTOR. TYPICAL AT BALANCING DAMPERS LOCATED ABOVE GYPSUM CEILINGS.
 - RETURN AIR GRILLE CFM SHOWN FOR 100% RETURN AIR MODE. FINAL BALANCING SHALL REFLECT MINIMUM OUTSIDE AIR MODE.
 - 6" DIAMETER TYPE B VENT SERVING DUCT FURNACE DF-1. MAINTAIN ALL LISTED MINIMUM CLEARANCES FROM COMBUSTIBLES AND NON-COMBUSTIBLES. TERMINATE ABOVE ROOF WITH A LISTED WEATHER CAP NOT LESS THAN 2 FT HIGHER THAN ANY PORTION OF THE BUILDING WITHIN 10 FT. PROVIDE UL LISTED THIMBLE AT ROOF PENETRATION. PROVIDE FIRE RATED ACCESS DOOR ABOVE CEILING FOR INSPECTION OF VENT PER NFPA 54. THE VENT SYSTEM SHALL BE INSTALLED PER NFPA 54 LOCAL CODES AND DUCT FURNACE INSTALLATION INSTRUCTIONS.
 - BYPASS VAV BOXES ARE NOT SHOWN ON THE DRAWINGS. ROOFTOP UNIT VENDOR AND CONTRACTOR SHALL SIZE BYPASS (DAMPERS) AT EACH ROOFTOP UNIT BASED ON THE MANUFACTURERS SIZING RECOMMENDATIONS. SIZE BYPASS VAV BOXES DUCTWORK AT A MAXIMUM 1.200 FPM. INSULATE BYPASS DAMPER DUCTWORK PER THE OPERATORS FOR SUPPLY DUCTWORK. INCLUDE SIZING CRITERIA WITH BYPASS DAMPER(S) SUBMITTAL.
 - BID ALTERNATE NO. 2 - ADD SKYLIGHTS; REPLACE 5 TON RTU-3 WITH 6 TON RTU-3A. REPLACE VAV BOX VAV-17 WITH VAV BOX VAV-17A. REPLACE LINEAR BAR GRILLE 56 WITH 56A. DUCT SIZES SHOWN IN PARENTHESES ARE FOR BID ALTERNATE NO. 2 PRICING.
 - BID ALTERNATE NO. 2 - INSTALL VAV 17A EQUIPPED WITH ELECTRIC HEATING COIL. WITH MINIMUM CODE REQUIRED CLEARANCES PER NEC, LOCAL CODES AND MFG'S INSTALLATION INSTRUCTIONS. PROVIDE WALL MOUNTED ACCESS PANEL ABOVE CEILING ADJACENT TO VAV BOX CONTROL PANEL. COORDINATE FINAL LOCATIONS OF VAV BOX AND ACCESS PANEL. ACCESS PANEL SIZE SHALL BE SIZED TO ALLOW FOR VISUAL INSPECTION AND ROUTINE MAINTENANCE OF VAV BOX AND CONTROL PANEL.



EXTEND DIFFUSER PLENUM ABOVE 10' LAY-IN CEILING HEIGHT TO ALLOW STRAIGHT-IN 12" PLENUM SUPPLY

EXTEND DIFFUSER PLENUM ABOVE 10' LAY-IN CEILING HEIGHT TO ALLOW STRAIGHT-IN 12" PLENUM SUPPLY

Mark	Date	Description
-	04-28-05	ISSUED FOR BID
-	04-11-05	100% REVIEW
-	01-10-05	DD REVIEW
Issue Dates		

Drawing Status

Drawing Title
**THIRD FLOOR PLAN
 MECHANICAL**

PA / PE: **CG** Drawn By: **KCW**
 Drawing Number

THIRD FLOOR PLAN - MECHANICAL
 1/4" = 1'-0" REF: NA **M1**

M10.3