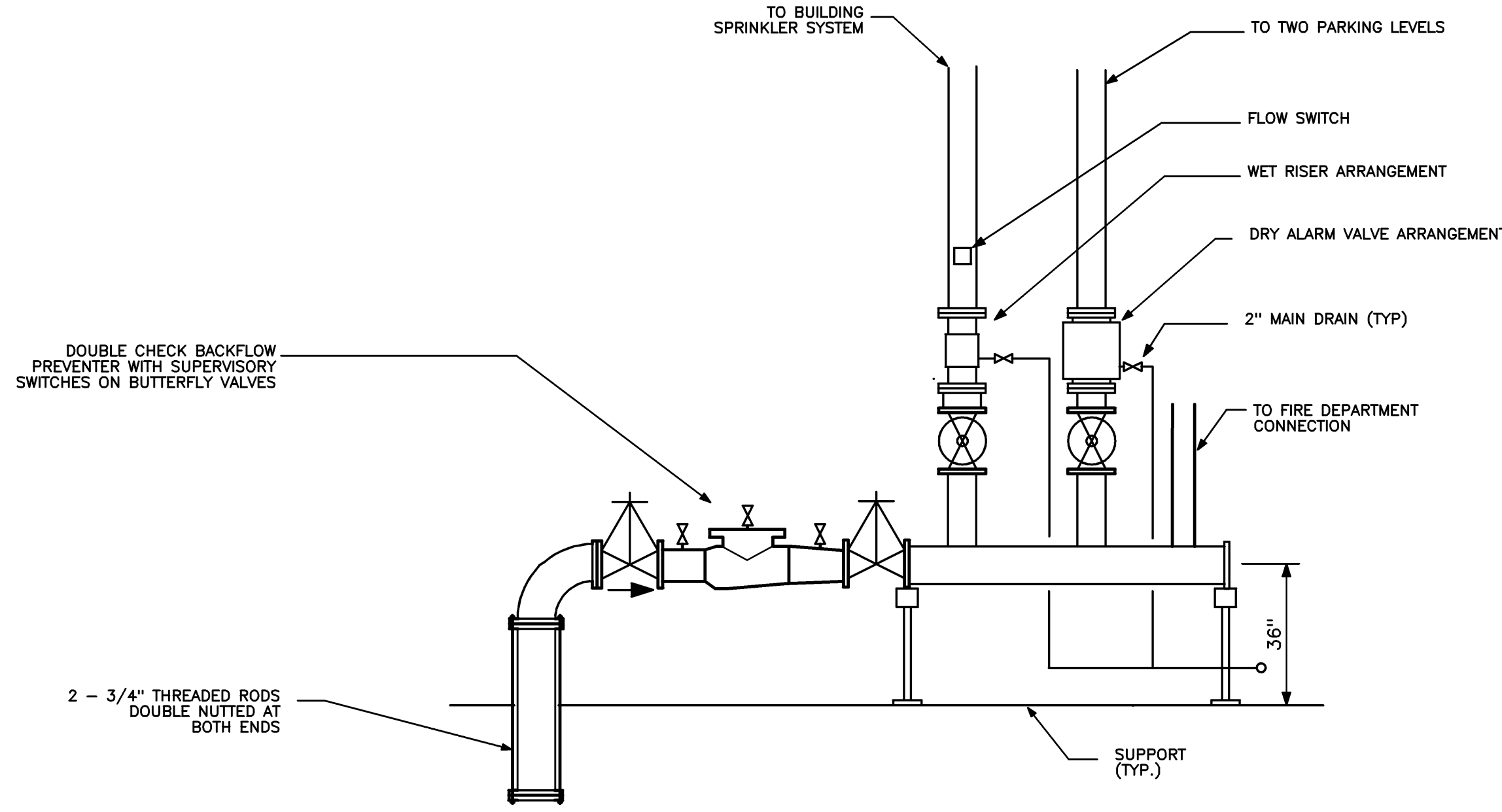
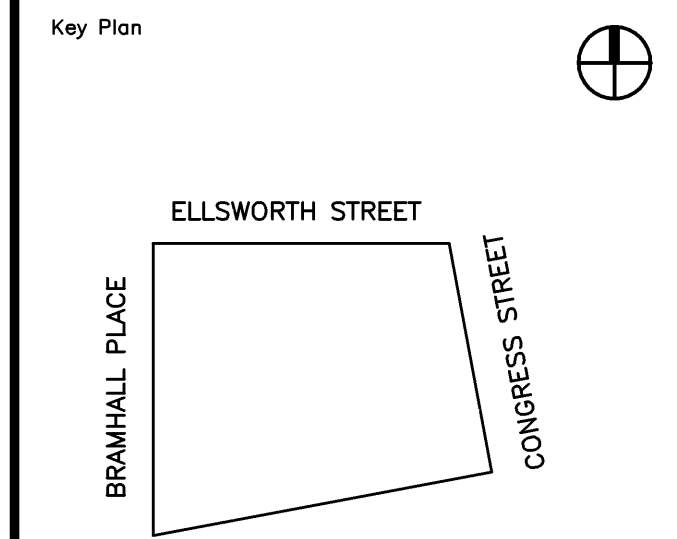


PLUMBING FIXTURE INSTALLATION SCHEDULE								
LABEL	FIXTURE DESCRIPTION	BRANCH SIZE					REMARKS	MOUNTING HEIGHT TO RIM
		VENT	WASTE	CW	HW	GAS		
WC-1	WATER CLOSET	2"	4"	1/2"	---	---	FLOOR MOUNTED TANK TYPE ADA COMPLIANT	16-1/2"
L-1	LAVATORY	1 1/2"	2"	1/2"	1/2"	---	WALL MOUNTED ADA COMPLIANT, INSULATE SUPPLIES AND WASTE SET FAUCET TEMPERATURE TO 105 DEGREES	34" MAXIMUM
MR	MOP RECEPTOR	1 1/2"	2"	1/2"	1/2"	---	---	FAUCET 36" AFF
WH	FREEZEPROOF WALL HYDRANT	---	---	3/4"	---	---	---	18" ABOVE GRADE OR CONCRETE LANDING
SK-1	STAINLESS STEEL SINK	1 1/2"	2"	1/2"	1/2"	---	SINGLE BOWL WITH GOOSENECK SPOUT SINGLE LEVER FAUCET	34" MAXIMUM
SK-2	STAINLESS STEEL SINK	1 1/2"	2"	1/2"	1/2"	---	SINGLE BOWL WITH GOOSENECK SPOUT SINGLE LEVER FAUCET AND HAND SPRAY	34" MAXIMUM
SH-1	SHOWER	1 1/2"	2"	1/2"	1/2"	---	---	VALVE SET AT 42" TOP OF SHOWER SPRAY AT 76"
FD-1	FLOOR DRAIN	1 1/2"	2"	---	---	---	---	---
FD-2	FLOOR DRAIN	2"	4"	---	---	---	1/2 OPEN GRATE	---
DW	DISHWASHER	1 1/2"	2"	---	1/2"	---	---	---
RTU-1	ROOFTOP UNIT	---	---	---	---	3/4"	130 MBH	---
RTU-2	ROOFTOP UNIT	---	---	---	---	3/4"	130 MBH	---
RTU-3	ROOFTOP UNIT	---	---	---	---	3/4"	150 MBH	---
DF-1	DUCT FURNACE	---	---	---	---	3/4"	125 MBH	---

PLUMBING FIXTURE INSTALLATION SCHEDULE C2
NO SCALE REF: NA

LEGEND	
—S—	SANITARY PIPING BELOW GROUND
—S—	SANITARY PIPING ABOVE GROUND
—V—	VENT PIPING BELOW GROUND
—V—	VENT PIPING ABOVE GROUND
—SD—	STORM DRAINAGE PIPING BELOW GROUND
—SD—	STORM DRAINAGE PIPING ABOVE GROUND
—OSD—	OVERFLOW STORM DRAINAGE PIPING ABOVE GROUND
—CW—	COLD WATER PIPING BELOW GROUND
—CW—	COLD WATER PIPING ABOVE GROUND
—HW—	HOT WATER PIPING BELOW GROUND
—HW—	HOT WATER PIPING ABOVE GROUND
—HWR—	HOT WATER RETURN PIPING
—G—	GAS PIPING ABOVE GROUND
—	SHUT-OFF VALVE
—	CHECK VALVE
—	BACKFLOW PREVENTER WITH ISOLATION VALVES
—	PRESSURE REDUCING VALVE
—	BALANCING VALVE
—	GAS COCK
—	CIRCULATOR PUMP
□	12" SQUARE FLOOR DRAIN
○	7" ROUND FLOOR DRAIN
⊙	FLOOR CLEANOUT
W/TP	WITH TRAP PRIMER
⊕	CLEANOUT
WC-1	HANDICAP WATER CLOSET
L-1	LAVATORY
MR	MOP RECEPTOR
DW	DISHWASHER
SH-1	SHOWER
WH	FREEZE PROOF WALL HYDRANT
V	VENT PIPING
VTR	VENT THROUGH ROOF
RD	ROOF DRAIN
RL	ROOF LEADER

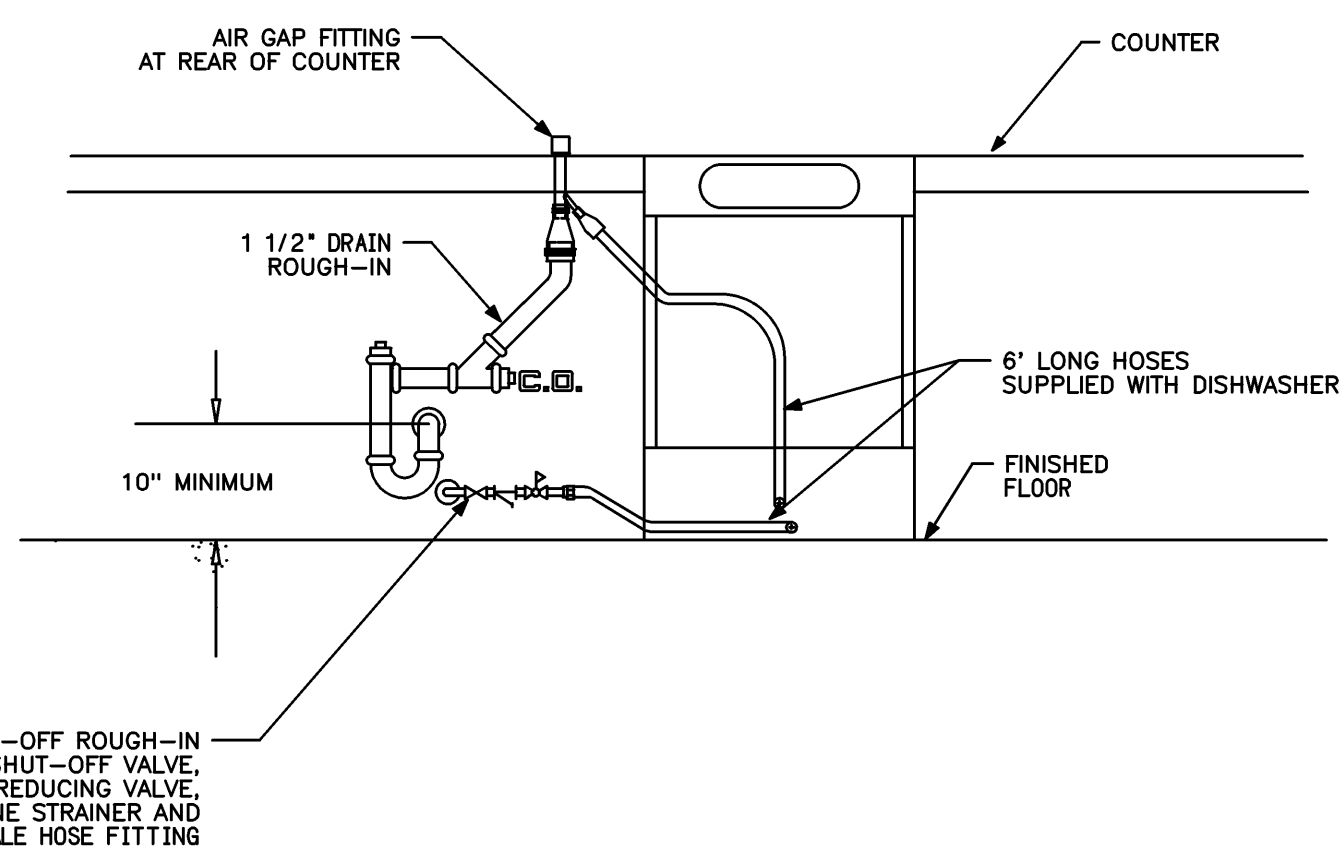
PLUMBING LEGEND C1
NO SCALE REF: NA



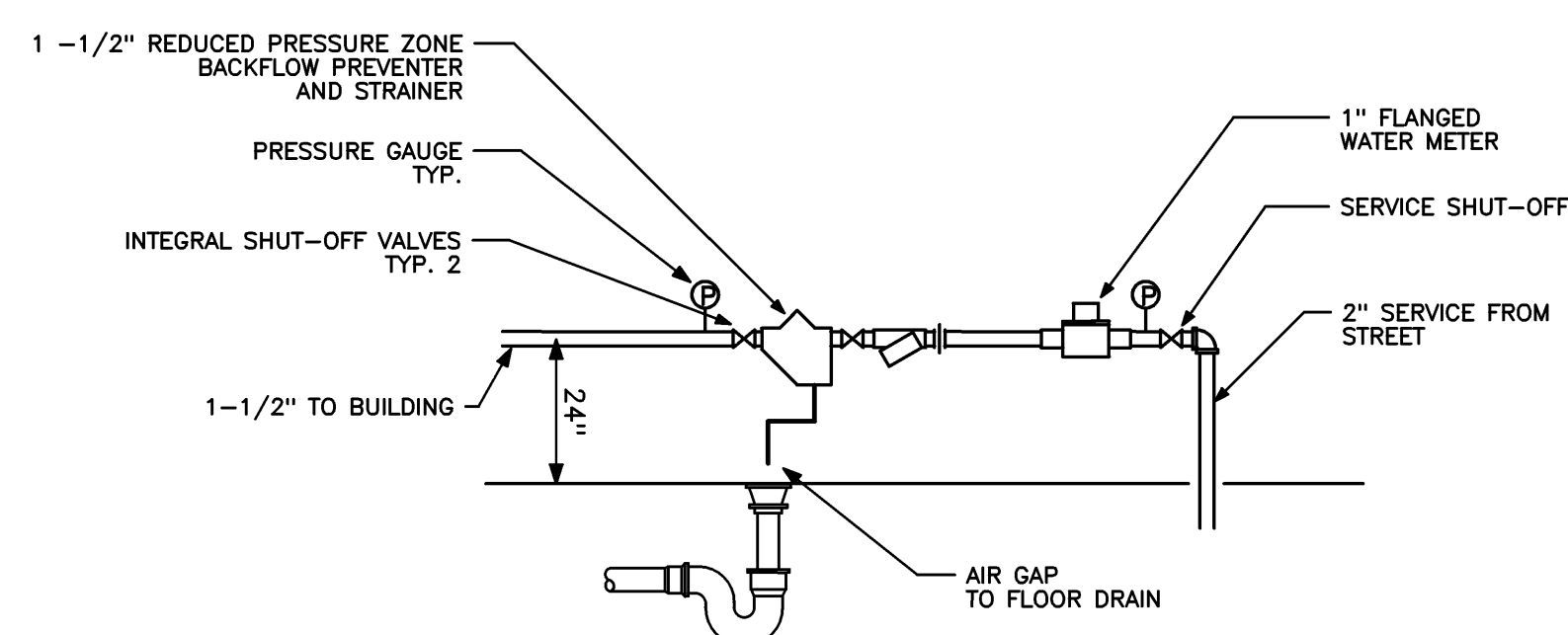
SPRINKLER RISER DETAIL B2
NO SCALE REF: NA

- COORDINATE WORK WITH THE WORK OF ALL OTHER TRADES.
- REFER TO INSTALLATION DATA SCHEDULE FOR THE SIZE OF PIPING CONNECTIONS AND MOUNTING HEIGHTS OF EACH FIXTURE.
- ALL SPRINKLER PIPING SHALL BE RUN LEVEL WITH LOW POINT DRAIN VALVES FOR ANY TRAPPED PIPE SECTIONS. ONE LOW POINT DRAIN VALVE WILL BE LOCATED IN EACH WING OF THE BUILDING.
- ALL PIPING SHALL BE CONCEALED EXCEPT IN SPACES WHERE NO COLLISIONS OCCUR.
- PROVIDE SPRINKLER PROTECTION BELOW ANY OBSTRUCTION 48" OR WIDER, FOR EXAMPLE DUCTS AND SHELVING.
- ENTIRE BUILDING SHALL BE SPRINKLERED IN ACCORDANCE WITH NFPA 13.

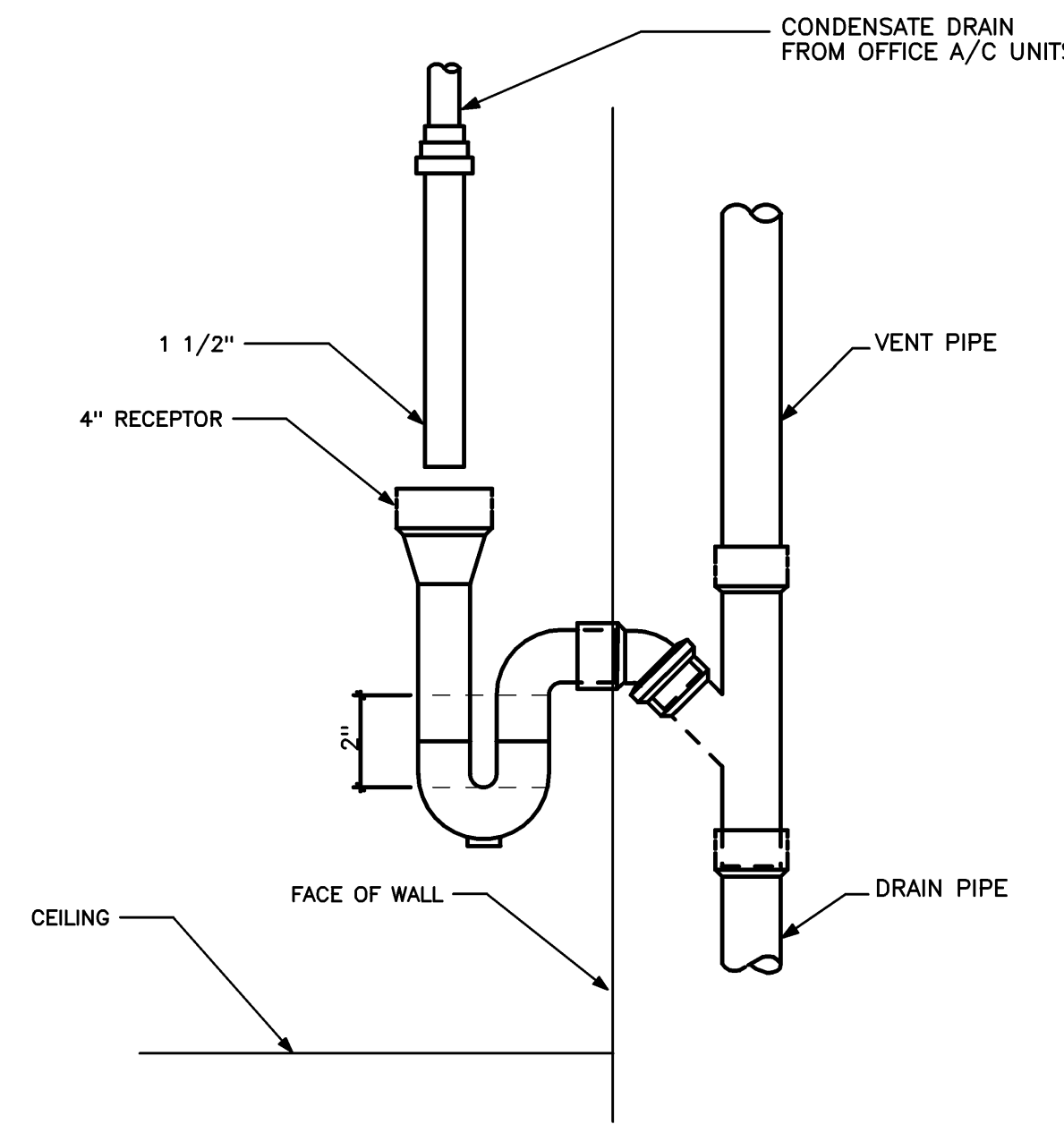
PLUMBING & SPRINKLER GENERAL NOTES B1
NO SCALE REF: NA



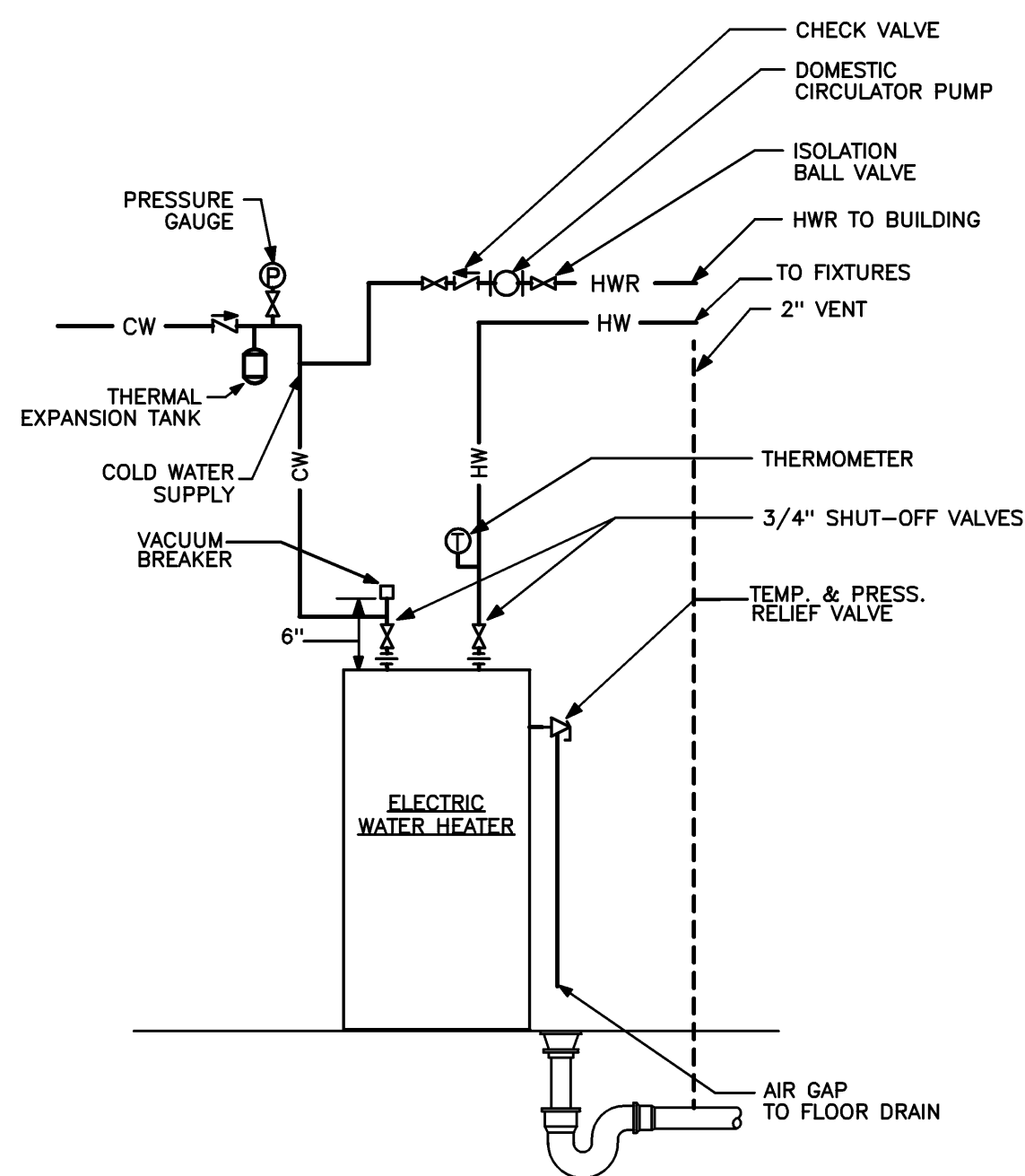
DISHWASHER PIPING DETAIL A4
NO SCALE REF: NA



DOMESTIC WATER ENTRANCE DETAIL A3
NO SCALE REF: NA



CONDENSATE DRAIN DETAIL A2
NO SCALE REF: NA



ELECTRIC WATER HEATER DETAIL A1
NO SCALE REF: NA

Mark	Date	Description
—	04-28-05	ISSUED FOR BID
—	04-11-05	100% REVIEW

Drawing Status

Drawing Title
PLUMBING SCHEDULES AND DETAILS

PA / PE: **SGH** Drawn By: **CWG**
Drawing Number

P00.1