

Project Title  
**MAINE HEART SURGICAL ASSOC. NEW OFFICE BLDG.**  
 PORTLAND, ME

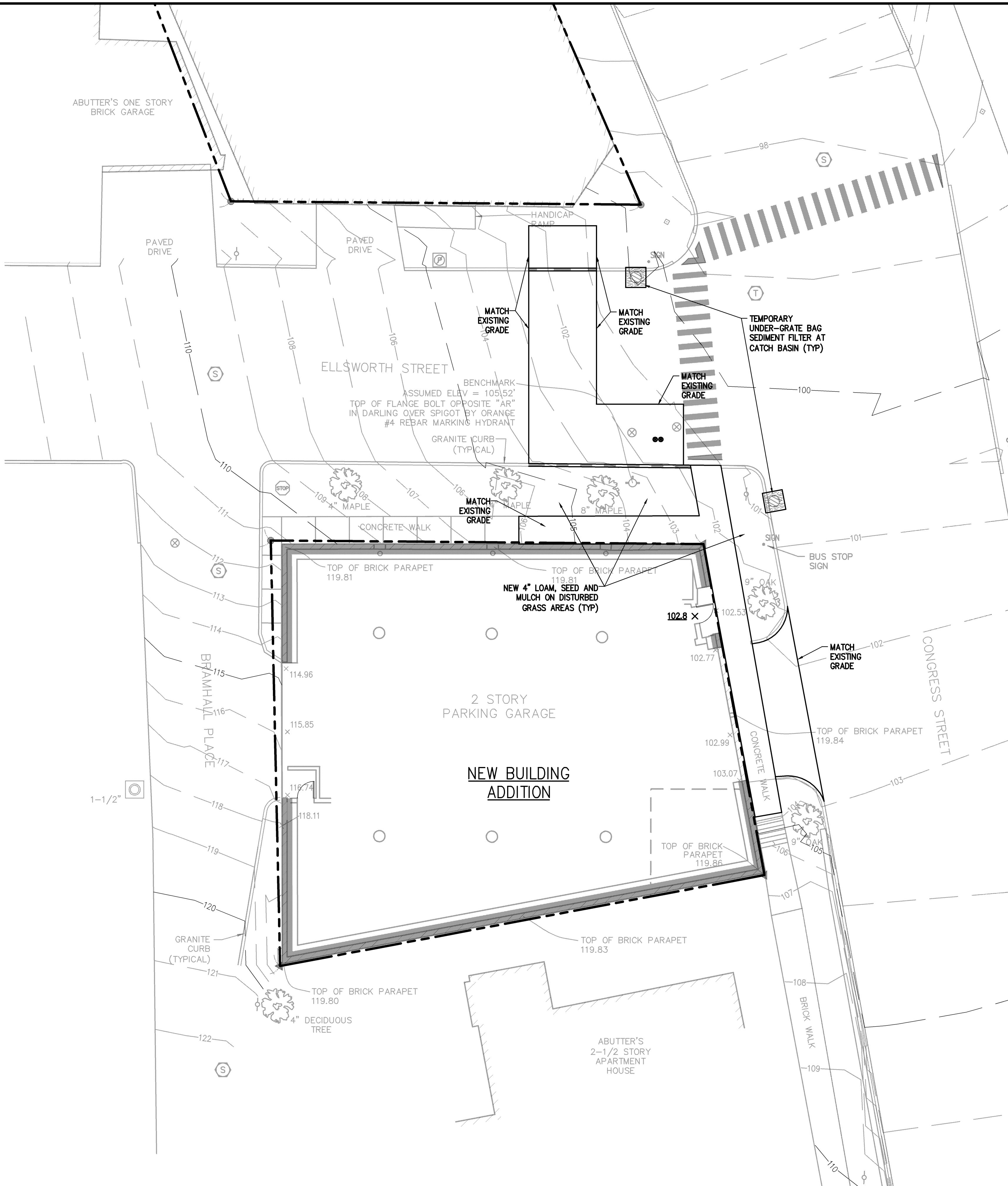
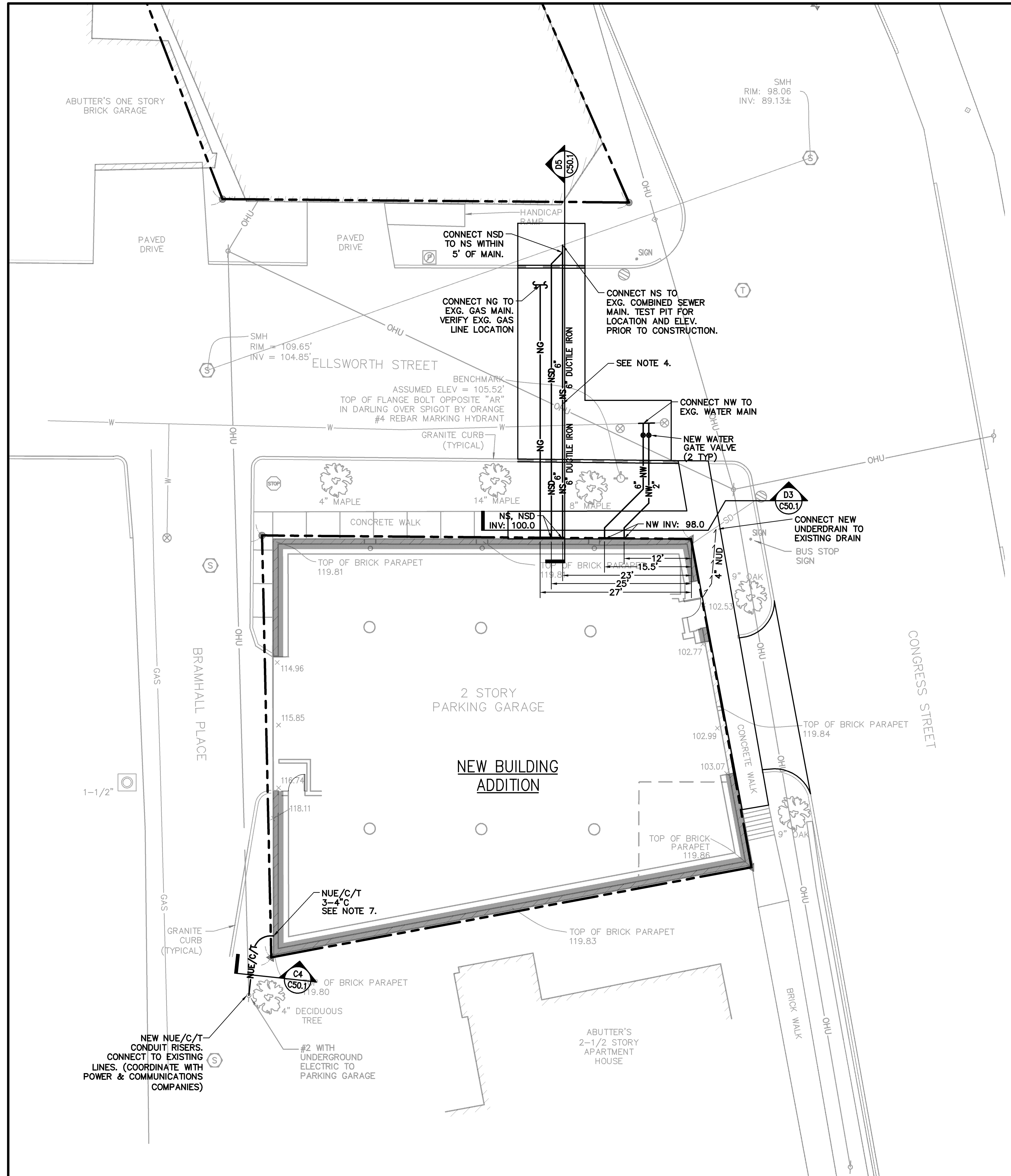
HA Project No. 04180

Key Plan

04-28-05	ISSUED FOR BID	
04-27-05	PLANNING BOARD REVISIONS	
02-23-05	PLANNING BOARD	
02-11-05	REVIEW	
01-10-05	D.D. REVIEW	
Mark	Date	Description

Drawing Status

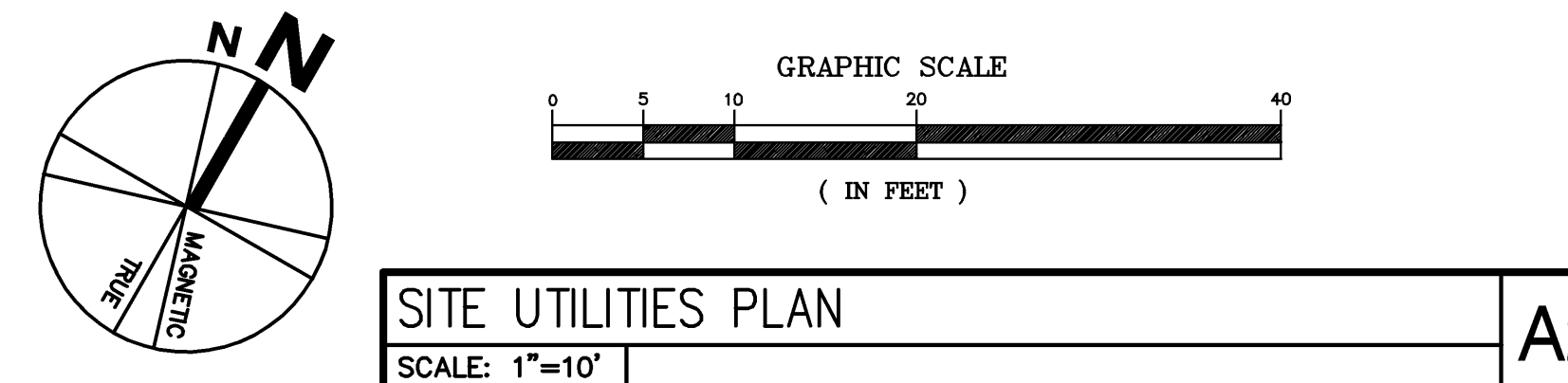
Drawing Title  
**SITE GRADING & EROSION CONTROL PLAN & UTILITIES PLAN**  
 PA / PE: FLC      Drawn By: MRL/NHS  
 Drawing Number  
**C30.1**



- UTILITY LOCATION REQUIREMENTS**  
 PRIOR TO EXCAVATION, VERIFY THE UNDERGROUND UTILITIES, PIPES, STRUCTURES, AND FACILITIES. PROVIDE THE FOLLOWING MINIMUM MEASURES:
- A. PRE-MARK THE BOUNDARIES OF YOUR PLANNED EXCAVATION WITH WHITE PAINT, FLAGS OR STAKES, SO UTILITY CREWS KNOW WHERE TO MARK THEIR LINES.
  - B. CALL DIG SAFE, AT 1-888-DIGSAFE, AT LEAST THREE BUSINESS DAYS - BUT NO MORE THAN 30 CALENDAR DAYS - BEFORE STARTING WORK. DON'T ASSUME SOMEONE ELSE WILL MAKE THE CALL.
  - C. IF BLASTING, NOTIFY DIG SAFE AT LEAST ONE BUSINESS DAY IN ADVANCE.
  - D. WAIT THREE BUSINESS DAYS FOR LINES TO BE LOCATED AND MARKED WITH COLOR-CODED PAINT, FLAGS OR STAKES. NOTE THE COLOR OF THE MARKS AND THE TYPE OF UTILITIES THEY INDICATE. TRANSFER THESE MARKS TO THE AS-BUILT DRAWINGS.
  - E. CONTACT THE LANDOWNER AND OTHER "NON-MEMBER" UTILITIES (WATER, SEWER, GAS, ETC.) FOR THEM TO MARK THE LOCATIONS OF THEIR UNDERGROUND FACILITIES. TRANSFER THESE MARKS TO THE AS-BUILT DRAWINGS.
  - F. RE-NOTIFY DIG SAFE AND THE NON-MEMBER UTILITIES IF THE DIGGING, DRILLING OR BLASTING DOES NOT OCCUR WITHIN 30 CALENDAR DAYS, OR IF THE MARKS ARE LOST DUE TO WEATHER CONDITIONS, SITE WORK ACTIVITY OR ANY OTHER REASON.
  - G. HAND DIG WITHIN 18 INCHES IN ANY DIRECTION OF ANY UNDERGROUND LINE UNTIL THE LINE IS EXPOSED. MECHANICAL METHODS MAY BE USED FOR INITIAL SITE PENETRATION, SUCH AS REMOVAL OF PAVEMENT OR ROCK.
  - H. DIG SAFE REQUIREMENTS ARE IN ADDITION TO TOWN, CITY AND/OR STATE DOT STREET OPENING PERMIT REQUIREMENTS.
  - I. FOR COMPLETE DIG SAFE REQUIREMENTS, CALL THE PUC OR VISIT THEIR WEBSITE.
  - J. IF YOU DAMAGE, DISLOCATE OR DISTURB ANY UNDERGROUND UTILITY LINE, IMMEDIATELY NOTIFY THE AFFECTED UTILITY. IF DAMAGE CREATES SAFETY CONCERNS, CALL THE FIRE DEPARTMENT AND TAKE IMMEDIATE STEPS TO SAFEGUARD HEALTH AND PROPERTY.
  - K. ANY TIME AN UNDERGROUND LINE IS DAMAGED OR DISTURBED, OR IF LINES ARE IMPROPERLY MARKED, YOU MUST FILE AN INCIDENT REPORT WITH THE PUC. FOR AN INCIDENT REPORT FORM VISIT WWW.STATE.ME.US/MPUC OR CALL THE PUC AT 1-800-452-4699.

**NOTES**

1. BOUNDARY SURVEY INFORMATION FOR MAINE HEART SURGICAL ASSOCIATION, PORTLAND, ME, PREPARED BY DES LAURIERS & ASSOCIATES, ON JULY 9, 1999. TOPOGRAPHIC INFORMATION FOR MAINE HEART SURGICAL ASSOCIATION, PORTLAND, ME, PREPARED BY ASSOCIATED DESIGN PARTNERS INC., FALMOUTH, MAINE, DATED 11-05-04. ELEVATION DATUM IS ASSUMED.
2. SEE DRAWING C50.1, SITE DETAILS, FOR STANDARD SITE LEGEND.
3. THE ACCURACY AND COMPLETENESS OF SUBSURFACE INFORMATION IS NOT GUARANTEED. VERIFY SITE CONDITIONS INCLUDING TEST PITS FOR LOCATIONS AND INVERTS OF UTILITIES AND REPORT ANY DISCREPANCIES TO ARCHITECT PRIOR TO PROCEEDING WITH THAT PORTION OF THE WORK.
4. PROVIDE AT LEAST 5" OF SOIL COVER OVER WATER LINES. SURROUND WATER PIPE WITH 6 INCHES OF CONCRETE ENCASEMENT, REINFORCED WITH WWF, AT CROSSINGS OF SEWER LINES UNLESS WATER IS ABOVE BY 18" CLEARANCE. ENCASEMENT TO EXTEND 10 FT. BEYOND SEWER LINE IN BOTH DIRECTIONS.
5. PROVIDE CONCRETE THRUST BLOCKING FOR WATER LINES ACCORDING TO THE TABLE ON THE DETAIL SHEET.
6. COORDINATE WORK ON UTILITY LINES OR WITHIN ROAD RIGHT-OF-WAY WITH THE UTILITY COMPANIES AND CITY PUBLIC WORKS DEPARTMENT AND STATE MDOT.
7. SLOPE CONDUITS AWAY FROM BUILDING TO HANDHOLE OR UTILITY POLE TO AVOID GROUND WATER SEEPAGE INTO BUILDING.



**NOTES**

1. BOUNDARY SURVEY INFORMATION FOR MAINE HEART SURGICAL ASSOCIATION, PORTLAND, ME, PREPARED BY DES LAURIERS & ASSOCIATES, ON JULY 9, 1999. TOPOGRAPHIC INFORMATION FOR MAINE HEART SURGICAL ASSOCIATION, PORTLAND, ME, PREPARED BY ASSOCIATED DESIGN PARTNERS INC., FALMOUTH, MAINE, DATED 11-05-04. BENCHMARK ON HYDRANT AT ELLSWORTH ST. IS ASSUMED ELEVATION 105.52. IT IS NOT COORDINATED WITH CITY OR NAD83/NAVD88 DATUM.
2. SEE DRAWING C50.1, SITE DETAILS, FOR STANDARD SITE LEGEND.
3. ADD 4" LOAM, SEED AND MULCH TO DISTURBED AREAS UNLESS OTHERWISE NOTED. PROVIDE EROSION CONTROL MESH ON ALL SLOPES 6:1 OR STEEPER, AND ALONG DITCH CHANNELS.
4. GRADE SURFACES TO DRAIN AWAY FROM BUILDING. PUDDLING OF WATER IN PAVED OR UNPAVED AREAS WILL NOT BE ACCEPTABLE EXCEPT FOR AREAS DESIGNATED AS PONDS.
5. MAINTAIN TEMPORARY EROSION CONTROL MEASURES FOR THE FULL DURATION OF CONSTRUCTION. INSPECT WEEKLY AND AFTER EACH STORM AND REPAIR AS NEEDED. REMOVE SEDIMENTS FROM THE SITE. PLACE IN AREA OF LOW EROSION POTENTIAL, AND STABILIZE WITH SEED AND MULCH.
6. PLACE TEMPORARY SOIL STABILIZATION WITHIN 30 DAYS OF INITIAL DISTURBANCE. PLACE PERMANENT SOIL STABILIZATION WITHIN 7 DAYS OF FINAL GRADING.

**STANDARD SITE ABBREVIATIONS**

BIT.	BITUMINOUS	NSD	NEW STORM DRAIN
C.O.	CLEAN-OUT	NSFM	NEW SEWER FORCE MAIN
CONC.	CONCRETE	NSL	NEW SPOT LIGHT
DI.	DRAIN INLET	NUD	NEW UNDERDRAIN
ELEV.	ELEVATION	NUE	NEW UNDERGROUND ELECTRICAL
EXG.	EXISTING	NUSC	NEW UNDERGROUND SPARE CONDUIT
F.F.E.	FINISHED FLOOR ELEVATION	NW	NEW WATER
FT	FEET	NWF	NEW WALL FIXTURE
IN.	INCHES	P.C.	PRECAST
INVT.	INVERT	R	RAMP
MAX.	MAXIMUM	S	STRUCTURAL PAD
MIN.	MINIMUM	SQ	SQUARE
N.I.C.	NOT IN CONTRACT	T	TRANSITIONAL PAD
NCB	NEW CATCH BASIN	TYP	TYPICAL
NLP	NEW LIGHT POLE	W/	WITH
NS	NEW SEWER	UNO	UNLESS NOTED OTHERWISE

