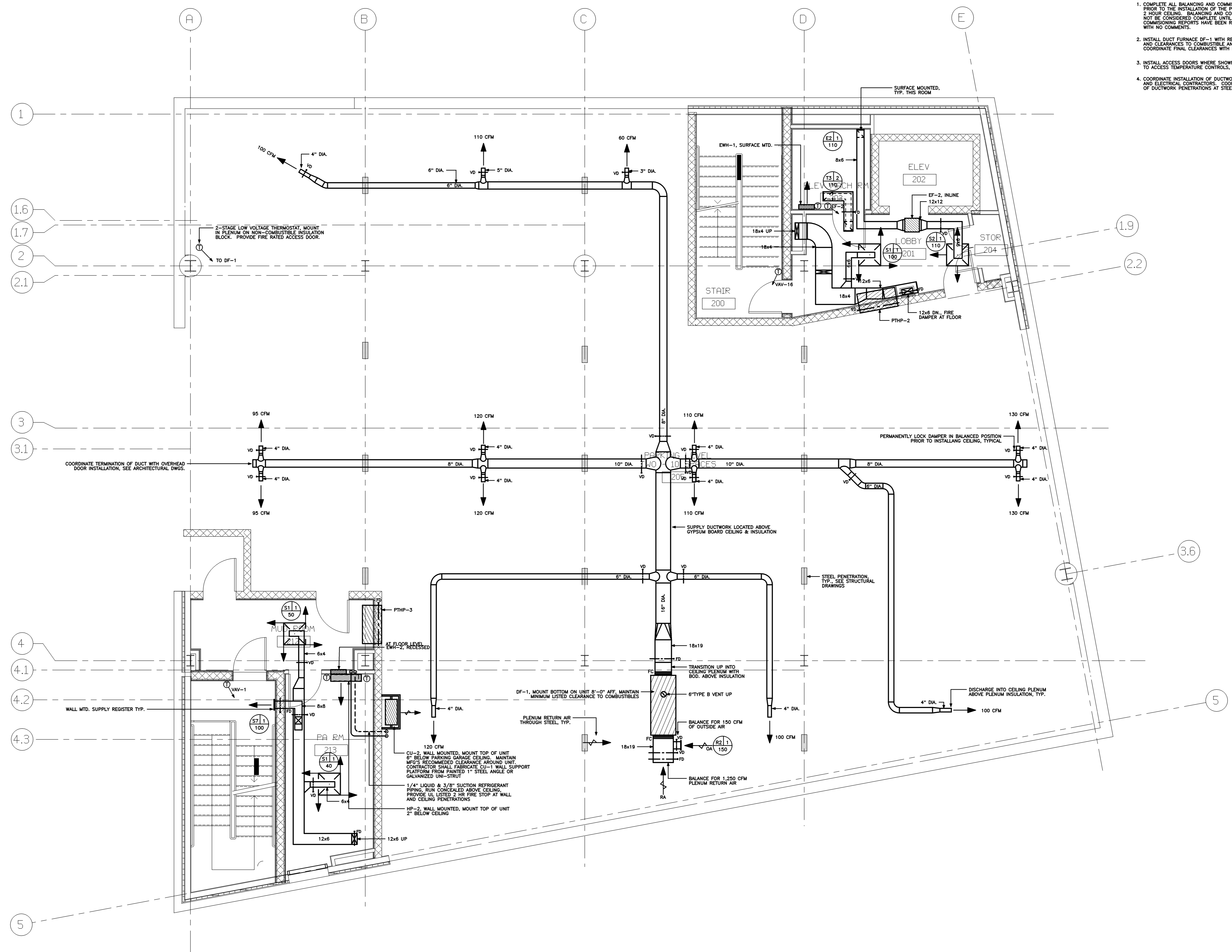
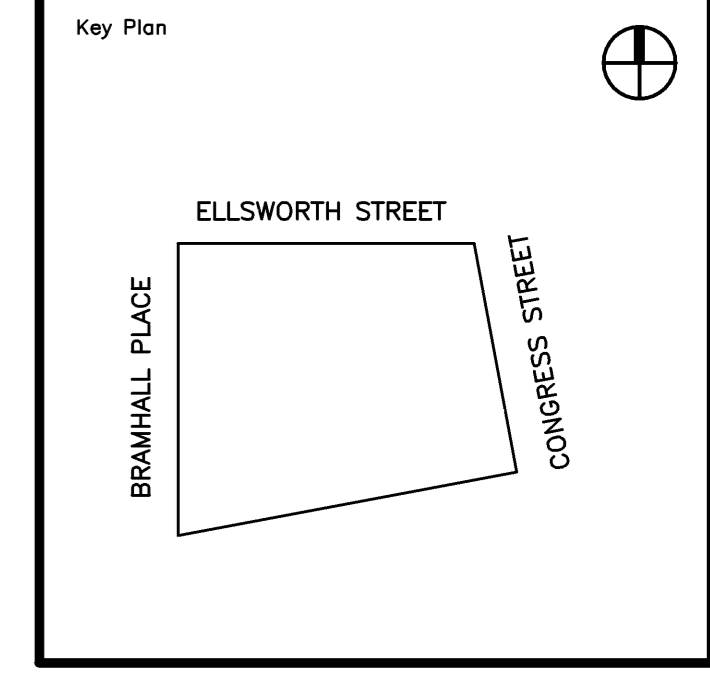


- GENERAL NOTES:
1. COMPLETE ALL BALANCING AND COMMISSIONING OF DF-1 PRIOR TO THE INSTALLATION OF THE PLENUM UL LISTED 2 HOUR CEILING. BALANCING AND COMMISSIONING SHALL NOT BE CONSIDERED COMPLETE UNTIL BALANCING AND COMMISSIONING REPORTS HAVE BEEN RETURNED APPROVED WITH NO COMMENTS.
 2. INSTALL DUCT FURNACE DF-1 WITH REQUIRED SERVICE CLEARANCES AND CLEARANCES TO COMBUSTIBLE AND NON-COMBUSTIBLE SURFACES. COORDINATE FINAL CLEARANCES WITH INSTALLATION OF CEILING PLENUM.
 3. INSTALL ACCESS DOORS WHERE SHOWN AND WHERE TO ACCESS TEMPERATURE CONTROLS, AND FIRE DAMPERS.
 4. COORDINATE INSTALLATION OF DUCTWORK WITH PLUMBING AND ELECTRICAL CONTRACTORS. COORDINATE EXACT LOCATIONS OF DUCTWORK PENETRATIONS AT STEEL OPENINGS.



Project Title
MAINE HEART SURGICAL ASSOC. NEW OFFICE BLDG.
 PORTLAND, ME

HA Project No. **04180**



Mark	Date	Description
-	04-28-05	ISSUED FOR BID
-	04-11-05	100% REVIEW
-	01-10-05	DD REVIEW

Issue Dates

Drawing Status

Drawing Title
SECOND FLOOR PLAN MECHANICAL

PA / PE: **CG** Drawn By: **KCW**
 Drawing Number

SECOND FLOOR PLAN - MECHANICAL
 1/4" = 1'-0" REF: NA **M1**

M10.2