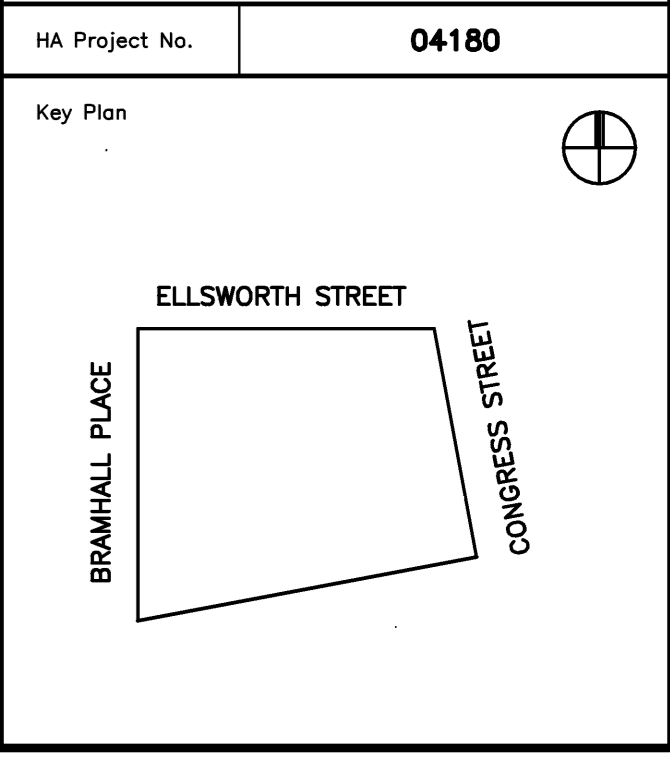
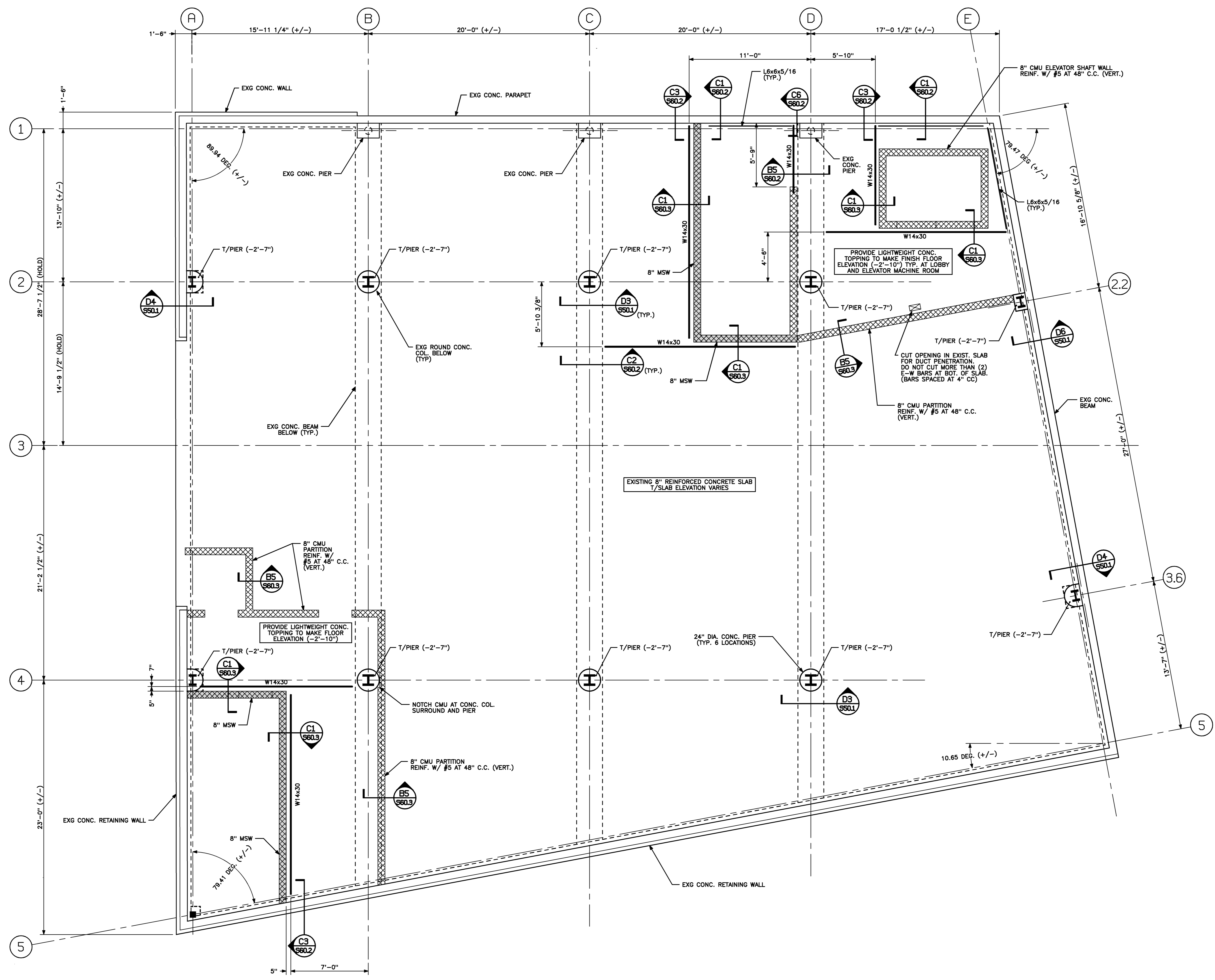


Project Title  
**MAINE HEART SURGICAL ASSOC.  
 NEW OFFICE BLDG.**  
 PORTLAND, ME



- NOTES:
1. BASELINE ELEVATION IS TOP OF CONC. PARAPET MEASURED AT NORTHWEST CORNER OF BUILDING. (119.81' +/-) ALL ELEVATIONS ARE REFERENCED FROM THIS BASELINE.
  2. TOP OF STEEL ELEVATION VARIES. (SEE DETAILS)
  3. ALL STEEL BEAMS AND WIDE-FLANGE COL'S TO BE ASTM A992 (Fy = 50 KSI)
  4. ALL HSS MEMBERS TO MEET THE FOLLOWING:  
 SQUARE AND RECTANGULAR - ASTM A500 GRADE B (Fy = 46 KSI)  
 ROUND - ASTM A500 GRADE B (Fy = 42 KSI)
  5. [Hatched pattern] DENOTES 8" MASONRY SHEAR WALL (MSW). SEE DRAWING S40.1 FOR DETAILS.
  6. ALL CONCRETE MASONRY SHALL HAVE A MIN. SPECIFIED COMPRESSIVE STRENGTH f'm = 2,000 PSI



Mark	Date	Description
-	04-28-05	ISSUED FOR BID
-	04-11-05	100% REVIEW

Issue Dates

Drawing Status

Drawing Title  
**SECOND FLOOR  
 FRAMING PLAN**

PA / PE: **BKB** Drawn By: **MRM**  
 Drawing Number

**S20.1**