

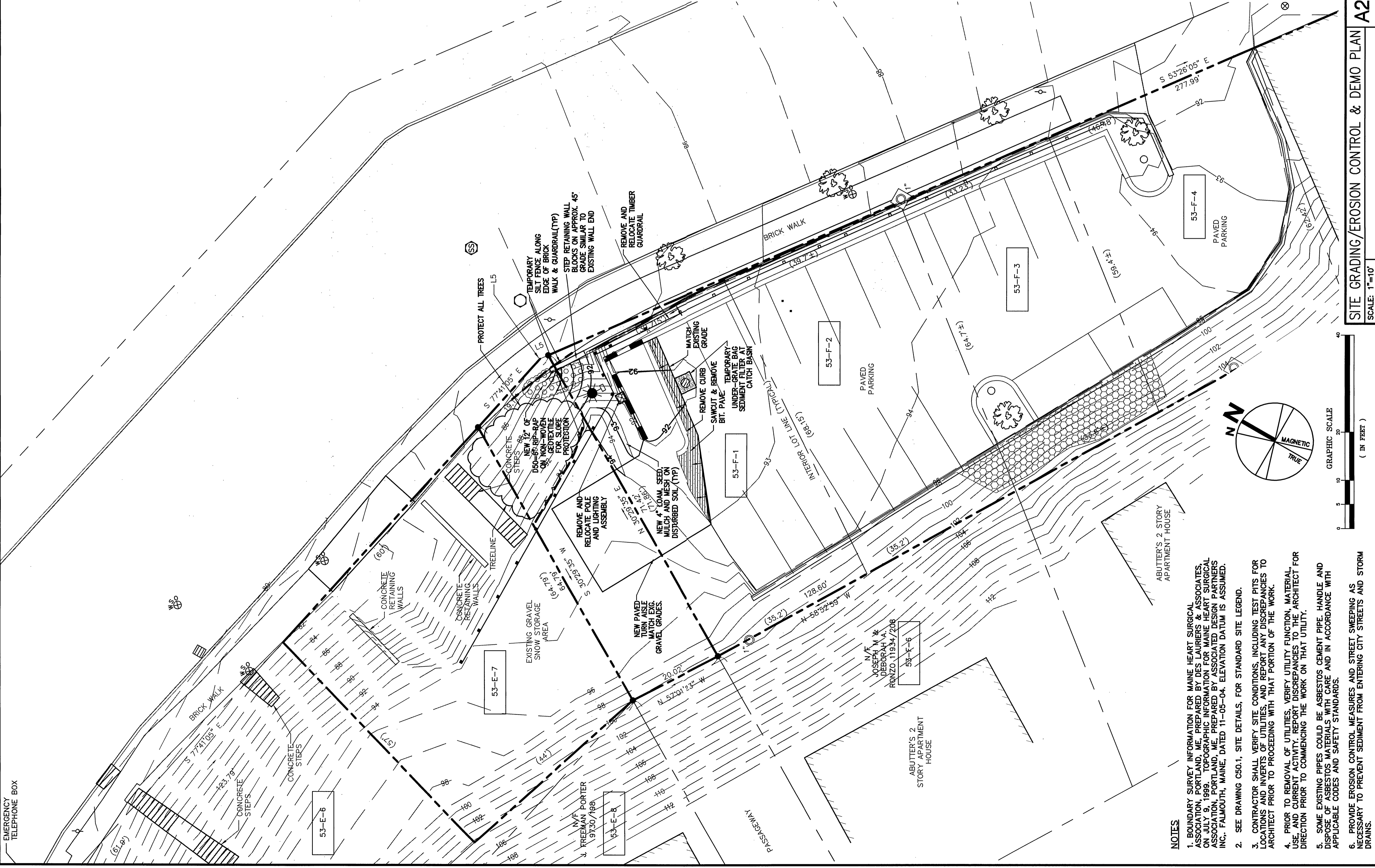
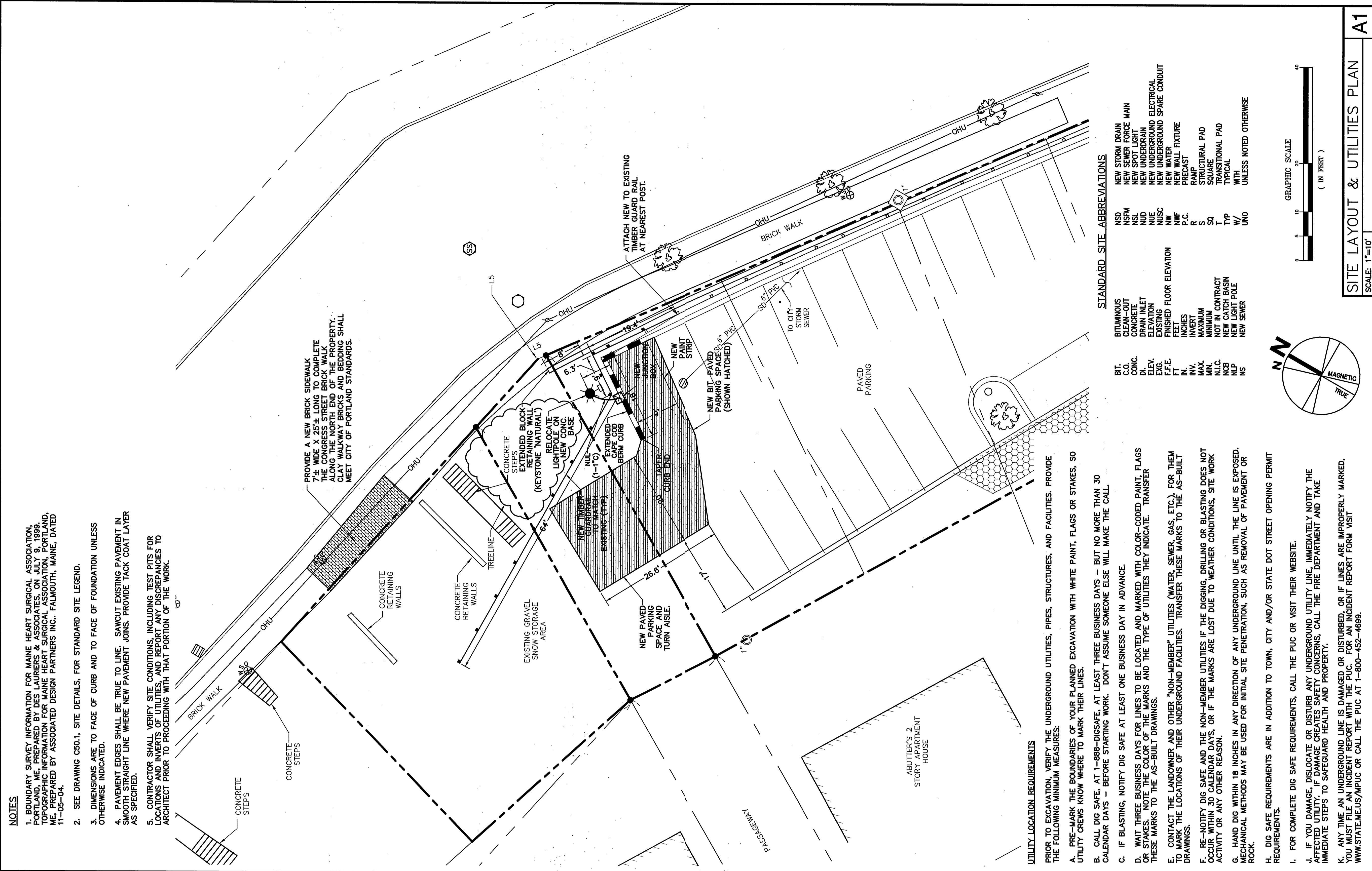

Date	Description
05-24-05	PLANNING BOARD REVISIONS
04-28-05	ISSUED FOR BID
04-27-05	PLANNING BOARD REVISIONS
02-23-05	PLANNING BOARD
02-11-05	REVIEW
01-10-05	D.D. REVIEW

Drawing Status

R/A / PE / FC	Drawn By: MRL/AH/S
	Drawing Number

**SITE PARTIAL PLAN**

**C60.1**



**NOTES**

- BOUNDARY SURVEY INFORMATION FOR MAINE HEART SURGICAL ASSOCIATION, PORTLAND, ME, PREPARED BY DES LAURIER & ASSOCIATES, PORTLAND, ME, PREPARED BY ASSOCIATED DESIGN PARTNERS INC., FALMOUTH, MAINE, DATED 11-05-04.
- SEE DRAWING C50.1, SITE DETAILS, FOR STANDARD SITE LEGEND.
- DIMENSIONS ARE TO FACE OF CURB AND TO FACE OF FOUNDATION UNLESS OTHERWISE INDICATED.
- PAVEMENT EDGES SHALL BE TRUE TO LINE. SAWCUT EXISTING PAVEMENT IN SMOOTH STRAIGHT LINE WHERE NEW PAVEMENT JOINS. PROVIDE TACK COAT LAYER AS SPECIFIED.
- CONTRACTOR SHALL VERIFY SITE CONDITIONS, INCLUDING TEST PITS FOR LOCATIONS AND DEPTHS, AND REPORT ANY DISCREPANCIES TO ARCHITECT PRIOR TO PROCEEDING WITH THAT PORTION OF THE WORK.

PROVIDE A NEW BRICK SIDEWALK 7½ WIDE X 25½ LONG TO COMPLETE THE CONGRESS STREET BRICK WALK. BRICK SHALL BE CLAY WALKWAY BRICKS AND BEDDING SHALL MEET CITY OF PORTLAND STANDARDS.

CONCRETE STEPS

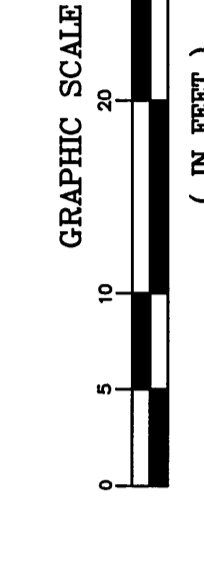
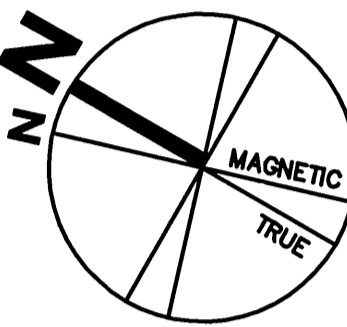
CONCRETE RETAINING WALLS

EXISTING GRAVEL SNOW STORAGE AREA

NEW PAVED SPACE AND TURN AISLE

**STANDARD SITE ABBREVIATIONS**

BT	BRITUMINOUS	NEW STORM DRAIN
C.O.	CLEAN-OUT	NEW SEWER FORCE MAIN
DL	DRAIN	NEW UNDERDRAIN
ELEV.	ELEVATION	NEW UNDERGROUND ELECTRICAL
EXG.	EXISTING	NEW UNDERGROUND SPARE CONDUIT
FT.	FEET	NEW UNDERGROUND PRECAST
IN.	INCHES	NEW WALL TEXTURE
R	RAMP	RAUP
S	STRUCTURAL PAD	STRUCTURAL PAD
S4	TRANSITIONAL PAD	TRANSITIONAL PAD
T	TYPICAL	TYPICAL
W/	WITH	WITH
UNO	UNLESS NOTED OTHERWISE	UNLESS NOTED OTHERWISE



**SITE GRADING/EROSION CONTROL & DEMO PLAN**

SCALE: 1"=10'

**SITE LAYOUT & UTILITIES PLAN**

SCALE: 1"=10'

**UTILITY LOCATION REQUIREMENTS**

PROVIDE TO EXCAVATION, VERIFY THE UNDERGROUND UTILITIES, PIPES, STRUCTURES, AND FACILITIES. PROVIDE THE FOLLOWING MINIMUM MEASURES:

- PRE-MARK THE BOUNDARIES OF YOUR PLANNED EXCAVATION WITH WHITE PAINT, FLAGS OR STAKES. SO UTILITY CREWS KNOW WHERE TO MARK THEIR LINES.
- CALL DIG SAFE, AT 1-888-DIGSAFE, AT LEAST THREE BUSINESS DAYS - BUT NO MORE THAN 30 CALENDAR DAYS - BEFORE STARTING WORK. DON'T ASSUME SOMEONE ELSE WILL MAKE THE CALL.
- IF BLASTING, NOTIFY DIG SAFE AT LEAST ONE BUSINESS DAY IN ADVANCE.
- WAIT THREE BUSINESS DAYS FOR LINES TO BE LOCATED AND MARKED WITH COLOR-CODED PAINT FLASGS BEFORE STARTING WORK. TRANSFER THESE MARKS TO THE AS-BUILT DRAWINGS.
- CONTACT THE LANDOWNER AND OTHER "NON-MEMBER" UTILITIES (WATER, SEWER, GAS, ETC.) FOR THEM TO LOCATE AND MARK THEIR UNDERGROUND UTILITIES. TRANSFER THESE MARKS TO THE AS-BUILT DRAWINGS.
- RE-NOTIFY DIG SAFE AND THE NON-MEMBER UTILITIES IF THE DIGGING, DRILLING OR BLASTING DOES NOT AFFECTED UTILITY. IF DAMAGE OCCURS, NOTIFY THE CITY OF PORTLAND, THE FIRE DEPARTMENT AND TAKE IMMEDIATE STEPS TO SAFEGUARD HEALTH AND PROPERTY.
- HAND DIG WITHIN 18 INCHES IN ANY DIRECTION OF ANY UNDERGROUND LINE UNTIL THE LINE IS EXPOSED. MECHANICAL METHODS MAY BE USED FOR INITIAL SITE PENETRATION, SUCH AS REMOVAL OF PAVEMENT OR ROCK.
- DIG SAFE REQUIREMENTS ARE IN ADDITION TO TOWN, CITY AND/OR STATE DOT STREET OPENING PERMIT REQUIREMENTS.
- FOR COMPLETE DIG SAFE REQUIREMENTS, CALL THE PUC OR VISIT THEIR WEBSITE.
- IF YOU DAMAGE, DISLOCATE OR DISTURB ANY UNDERGROUND UTILITY LINE, IMMEDIATELY NOTIFY THE AFFECTED UTILITY. IF DAMAGE CREATES SAFETY CONCERNS, CALL THE FIRE DEPARTMENT AND TAKE IMMEDIATE STEPS TO SAFEGUARD HEALTH AND PROPERTY.
- ANY TIME AN UNDERGROUND LINE IS DAMAGED OR DISTURBED, OR IF LINES ARE IMPROPERLY MARKED, YOU MUST FILE AN INCIDENT REPORT WITH THE PUC. FOR AN INCIDENT REPORT FORM VISIT WWW.STATE.ME.US/MPUC OR CALL THE PUC AT 1-800-452-4689.

**NOTES**

- BOUNDARY SURVEY INFORMATION FOR MAINE HEART SURGICAL ASSOCIATION, PORTLAND, ME, PREPARED BY DES LAURIER & ASSOCIATES, PORTLAND, ME, PREPARED BY ASSOCIATED DESIGN PARTNERS INC., FALMOUTH, MAINE, DATED 11-05-04. ELEVATION DATUM IS ASSUMED.
- SEE DRAWING C50.1, SITE DETAILS, FOR STANDARD SITE LEGEND.
- CONTRACTOR SHALL VERIFY SITE CONDITIONS, INCLUDING TEST PITS FOR LOCATIONS AND INVERTS OF UTILITIES, AND REPORT ANY DISCREPANCIES TO ARCHITECT PRIOR TO COMMENCING THE WORK ON THAT UTILITY.
- PRIOR TO REMOVAL OF UTILITIES, VERIFY UTILITY FUNCTION, MATERIAL DIRECTION PRIOR TO COMMENCING THE WORK ON THAT UTILITY.
- SOME EXISTING PIPES COULD BE ASBESTOS CEMENT PIPE. HANDLE AND DISPOSE OF ASBESTOS MATERIALS WITH CARE AND IN ACCORDANCE WITH APPLICABLE CODES AND SAFETY STANDARDS.
- PROVIDE EROSION CONTROL MEASURES AND STREET SWEEPING AS NECESSARY TO PREVENT SEDIMENT FROM ENTERING CITY STREETS AND STORM DRAINS.

SCALE: 1"=10'