

HARRIMAN ASSOCIATES
 Architects & Engineers
 One Auburn Business Park
 Auburn, ME 04210
 207.743.5593 FAX
 207.782.3877 TEL
 www.harriman.com
 Building Commissioner
 License 11927
 Since 1971
 67-9304

Project Title: **MAINE HEART SURGICAL ASSOC. NEW OFFICE BLDG.**
 PORTLAND, ME

PK Project No: 04180
 Key Plan

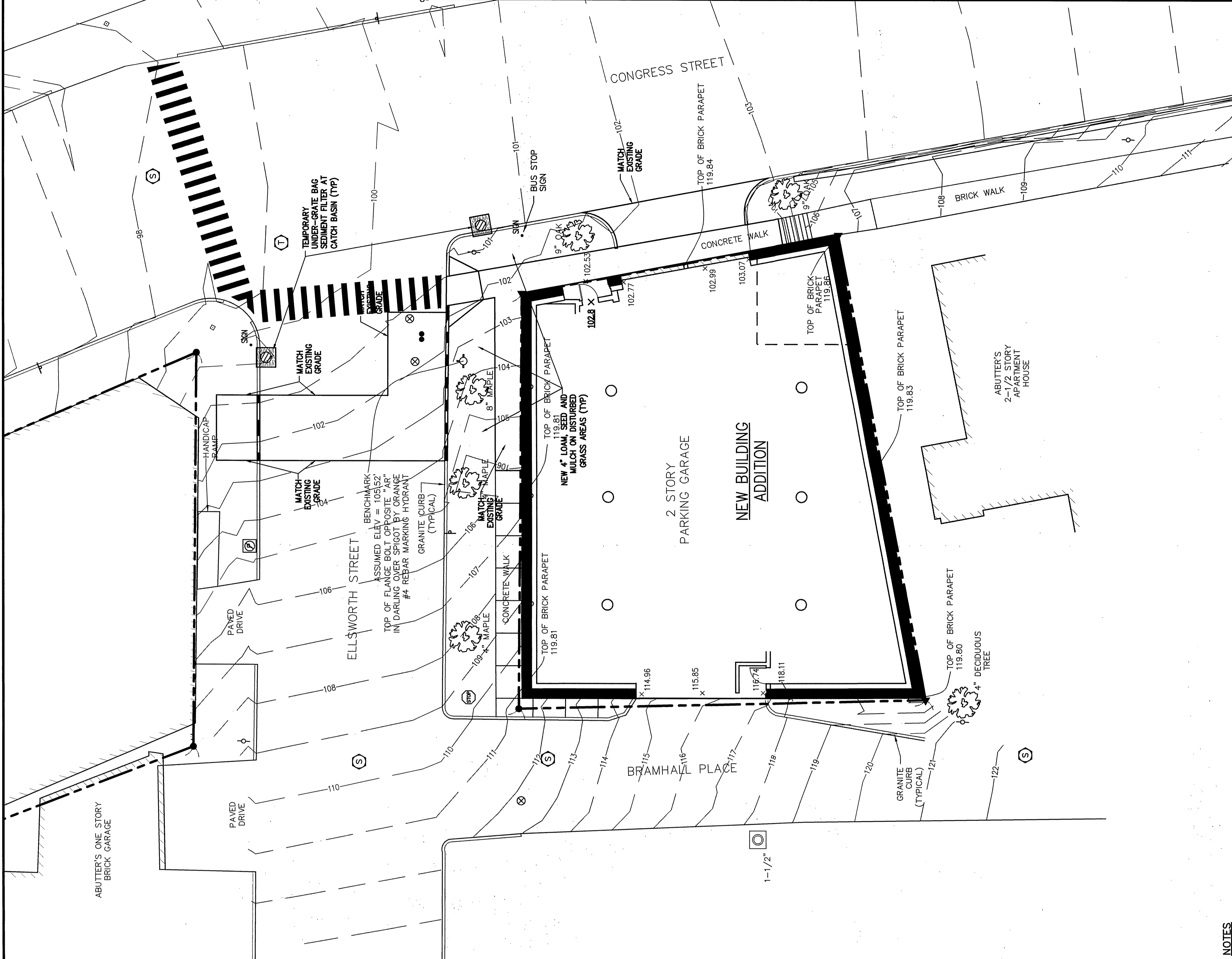
Mark	Date	Description
05-24-05	PLANNING BOARD REVISIONS	
04-28-05	ISSUED FOR BID	
04-27-05	PLANNING BOARD REVISIONS	
02-23-05	PLANNING BOARD	
02-11-05	REVIEW	
01-10-05	D.D. REVIEW	

Mark	Date	Description
05-24-05	PLANNING BOARD REVISIONS	
04-28-05	ISSUED FOR BID	
04-27-05	PLANNING BOARD REVISIONS	
02-23-05	PLANNING BOARD	
02-11-05	REVIEW	
01-10-05	D.D. REVIEW	

Drawing Status:
 PA / FE: FLC
 Drawn By: MRL/AHS
 Drawing Number: C30.1

SITE GRADING & EROSION CONTROL PLAN

SCALE: 1"=10'



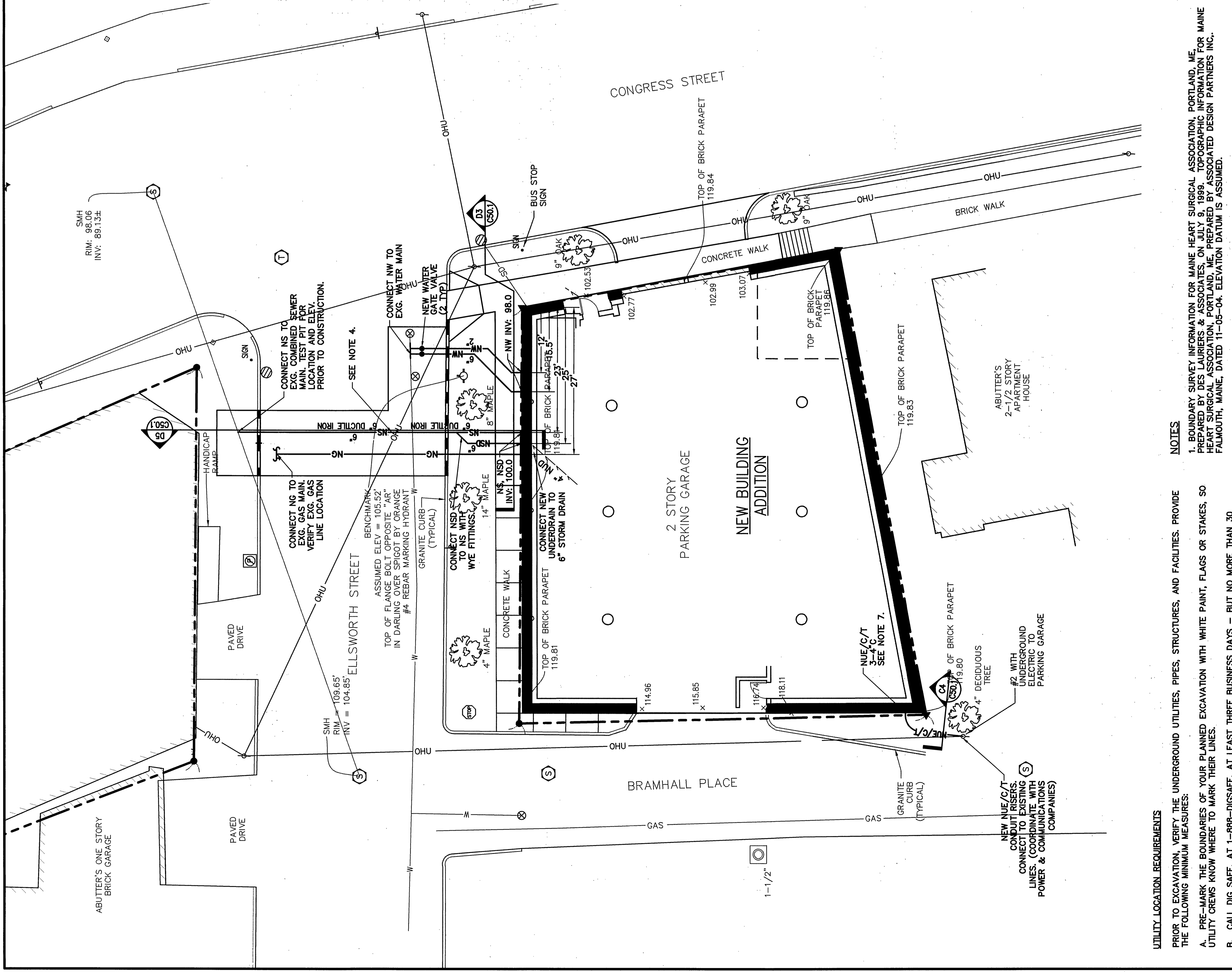
STANDARD SITE ABBREVIATIONS

BT. BITUMINOUS
 C.O. CLEAN-OUT
 D. DRAIN
 D.E. DRAIN ELEVATION
 E. EXISTING
 ELEV. ELEVATION
 EX. EXISTING
 F.E. FINISHED FLOOR ELEVATION
 FE. EXISTING
 FF. FINISHED FLOOR
 FT. FEET
 I.N. INCHES
 IN. INVERT
 INV. INVERT
 M.A. MANHOLE
 M.L. MINIMUM
 M.M. NOT IN CONTRACT
 M.N. NEW CATCH BASIN
 M.P. NEW LIGHT POLE
 M.S. NEW SEWER
 NS. UNLESS NOTED OTHERWISE

NSD NEW STORM DRAIN
 NSFW NEW SEWER FORCE MAIN
 NU NEW UNDERDRAIN
 NUE NEW UNDERGROUND ELECTRICAL
 NUWC NEW UNDERGROUND WASTE WATER CONDUIT
 NY NEW UNDERGROUND SPARE CONDUIT
 NWF NEW W/ATER FEATURE
 NYF NEW W/ATER FEATURE
 P.C. RAMP
 R STRUCTURAL PAD
 S STRUCTURAL PAD
 ST TRANSITIONAL PAD
 TYP TYPICAL
 W/ UNLESS NOTED OTHERWISE

NOTES

- BOUNDARY SURVEY INFORMATION FOR MAINE HEART SURGICAL ASSOCIATION, PORTLAND, ME, PREPARED BY DES LAURIERS & ASSOCIATES, ON JULY 9, 1999. TOPOGRAPHIC INFORMATION FOR MAINE HEART SURGICAL ASSOCIATION, PORTLAND, ME, PREPARED BY ASSOCIATED SURVEYING PARTNERS INC., FALMOUTH, MAINE, DATED 11-05-04. ELEVATION DATUM IS ASSUMED.
- SEE DRAWING CS0.1, SITE DETAILS, FOR STANDARD SITE LEGEND.
- NEW 4" LOAM AND MULCH TO DISTURBED CRASS AREAS (TYP)
- GRASS SURFACES TO DRAIN AWAY FROM BUILDING. RIDGING OF WATER IN PAVED OR UNPAVED AREAS WILL NOT BE ACCEPTABLE EXCEPT FOR AREAS DESIGNATED AS PONDS.
- MAINTAIN TEMPORARY EROSION CONTROL MEASURES FOR THE FULL DURATION OF CONSTRUCTION. INSPECT WEEKLY AND AFTER EACH STORM AND REPAIR AS NEEDED. REMOVE SEDIMENTS FROM THE SITE. PLACE IN AREA OF LOW EROSION POTENTIAL AND STABILIZE WITH SEED AND MULCH.
- PLACE TEMPORARY SOIL STABILIZATION WITHIN 30 DAYS OF INITIAL DISTURBANCE. PLACE PERMANENT SOIL STABILIZATION WITHIN 7 DAYS OF FINAL GRADING.
- PROVIDE EROSION CONTROL MEASURES AND STREET SWEEPING TO PREVENT SEDIMENT FROM ENTERING CITY STREETS AND STORM DRAINS.



UTILITY LOCATION REQUIREMENTS

BEFORE STARTING WORK, VERIFY THE UNDERGROUND UTILITIES, PIPES, STRUCTURES, AND FACILITIES. PROVIDE THE FOLLOWING MINIMUM MEASURES:

- PRE-MARK THE BOUNDARIES OF YOUR PLANNED EXCAVATION WITH WHITE PAINT, FLAGS OR STAKES, SO UTILITY CREWS KNOW WHERE TO MARK THEIR LINES.
- CALL DIG SAFE. AT LEAST THREE BUSINESS DAYS - BUT NO MORE THAN 30 CALENDAR DAYS - BEFORE STARTING WORK. DON'T ASSUME SOMEONE ELSE WILL MAKE THE CALL.
- IF BLASTING, NOTIFY DIG SAFE AT LEAST ONE BUSINESS DAY IN ADVANCE.
- WAIT THREE BUSINESS DAYS FOR LINES TO BE LOCATED AND MARKED WITH COLOR-CODED PAINT, FLAGS OR STAKES. NOTE THE COLOR OF THE MARKS AND THE TYPE OF UTILITIES THEY IDENTIFY. TRANSFER THESE MARKS TO THE AS-BUILT DRAWINGS.
- CONTACT THE LANDOWNER AND OTHER "NON-MEMBER" UTILITIES (WATER, SEWER, GAS, ETC.) FOR THEM TO MARK THE LOCATIONS OF THEIR UNDERGROUND FACILITIES. TRANSFER THESE MARKS TO THE AS-BUILT DRAWINGS.
- RE-NOTIFY DIG SAFE AND THE NON-MEMBER UTILITIES IF THE DIGGING, DRILLING OR BLASTING DOES NOT OCCUR WITHIN 30 CALENDAR DAYS, OR IF THE MARKS ARE LOST DUE TO WEATHER CONDITIONS, SITE WORK ACTIVITY OR ANY OTHER REASON.
- HAND DIG WITHIN 18 INCHES IN ANY DIRECTION OF ANY UNDERGROUND LINE UNTIL THE LINE IS EXPOSED. MECHANICAL METHODS MAY BE USED FOR INITIAL SITE PENETRATION, SUCH AS REMOVAL OF PAVEMENT OR ROCK.
- DIG SAFE REQUIREMENTS ARE IN ADDITION TO TOWN, CITY AND/OR STATE DOT STREET OPENING PERMIT REQUIREMENTS.
- FOR COMPLETE DIG SAFE REQUIREMENTS, CALL THE PUC OR VISIT THEIR WEBSITE.
- IF YOU DAMAGE, DISLOCATE OR DISTURB ANY UNDERGROUND UTILITY LINE, IMMEDIATELY NOTIFY THE PUC AND ALL UTILITIES INVOLVED. CALL THE FIRE DEPARTMENT AND TAKE IMMEDIATE STEPS TO SAFEGUARD HEALTH AND PROPERTY.
- IF ANY UNDERGROUND LINE IS DAMAGED OR DISTURBED, OR IF LINES ARE IMPROPERLY MARKED, YOU MUST FILE AN INCIDENT REPORT FORM VISIT WWW.STATE.ME.US/PUC OR CALL THE PUC AT 1-800-452-4888.

NOTES

- BOUNDARY SURVEY INFORMATION FOR MAINE HEART SURGICAL ASSOCIATION, PORTLAND, ME, PREPARED BY DES LAURIERS & ASSOCIATES, ON JULY 9, 1999. TOPOGRAPHIC INFORMATION FOR MAINE HEART SURGICAL ASSOCIATION, PORTLAND, ME, PREPARED BY ASSOCIATED DESIGN PARTNERS INC., FALMOUTH, MAINE, DATED 11-05-04. ELEVATION DATUM IS ASSUMED.
- SEE DRAWING CS0.1, SITE DETAILS, FOR STANDARD SITE LEGEND.
- THE ACCURACY AND COMPLETENESS OF SUBSURFACE INFORMATION IS NOT GUARANTEED. VERIFY SITE CONDITIONS INCLUDING TEST PITS FOR LOCATIONS AND INVERTS OF UTILITIES AND REPORT ANY DISCREPANCIES TO ARCHITECT PRIOR TO PROCEEDING WITH THAT PORTION OF THE WORK.
- PROVIDE AT LEAST 5% OF SOIL COVER OVER WATER LINES. SURROUND WATER PIPE WITH 6 INCHES OF CONCRETE ENCASUREMENT, REINFORCED WITH W/AF AT CROSSINGS OF SEWER LINES UNLESS WATER IS ABOVE BY 18" CLEARANCE. ENCASUREMENT TO EXTEND 10 FT. BEYOND SEWER LINE IN BOTH DIRECTIONS.
- PROVIDE CONCRETE THRUST BLOCKING FOR WATER LINES ACCORDING TO THE TABLE ON THE DETAIL SHEET.
- COORDINATE WORK ON UTILITY LINES OR WITHIN ROAD RIGHT-OF-WAY WITH THE UTILITY COMPANIES AND CITY PUBLIC WORKS DEPARTMENT AND STATE ADOT.
- SLOPE CONSULTS AWAY FROM BUILDING TO HANDHOLE OR UTILITY POLE TO AVOID GROUND WATER SEEPAGE INTO BUILDING.