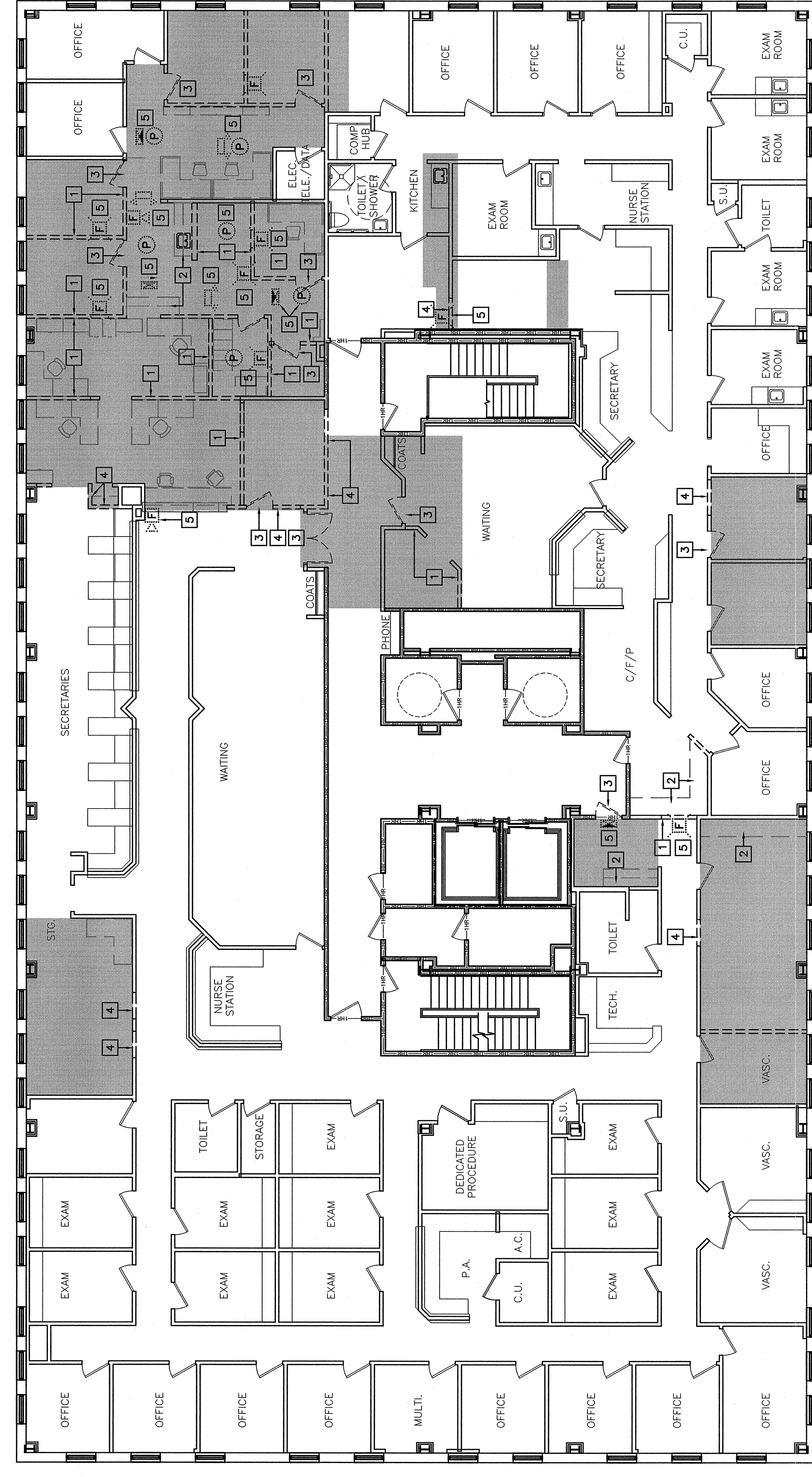


DEMOLITION KEY NOTES:

- 1 REMOVE PARTITION COMPLETE.
- 2 REMOVE EXISTING CASEWORK COMPLETE FOR POTENTIAL RELOCATION. COORDINATE WITH OWNER.
- 3 REMOVE DOOR, FRAME AND HARDWARE COMPLETE. COORDINATE POTENTIAL RELOCATION.
- 4 REMOVE PORTION OF PARTITION FOR INSTALLATION OF DOOR. COORDINATE EXTENTS WITH FINISHES TO REMAIN. REFERENCE DOOR SCHEDULE.
- 5 REMOVE EXISTING LIFE SAFETY ELECTRICAL FOR POTENTIAL RELOCATION.

GENERAL DEMOLITION NOTES:

1. COORDINATE EXTENT OF DEMOLITION WITH LOCATIONS OF PARTITIONS DESCRIBED ON PLANS AND WITH LOCATIONS OF FINISHES NOTED AS EXISTING TO REMAIN.
2. ANY WALL, PARTITION OR SURFACE DISTURBED BECAUSE OF NEW WORK OR DEMOLITION SHALL BE PATCHED AND FINISHED TO MATCH EXISTING ADJACENT CONSTRUCTION FINISHES. CONTINUITY AND FIRE RATINGS UNLESS NOTED OTHERWISE.
3. PROTECT ALL FINISHES, MATERIALS AND EQUIPMENT NOTED AS EXISTING TO REMAIN. CONTRACTOR SHALL BE RESPONSIBLE TO REPLACE ALL FINISHES, MATERIALS AND EQUIPMENT DAMAGED DURING CONSTRUCTION.
4. FOR EXTENTS OF CEILING GRID REMOVALS AND ADJUSTMENTS REFER TO SHEET AE77?
5. DIMENSIONS INDICATED ± ARE EXISTING CONDITION DIMENSIONS TO BE VERIFIED IN FIELD.



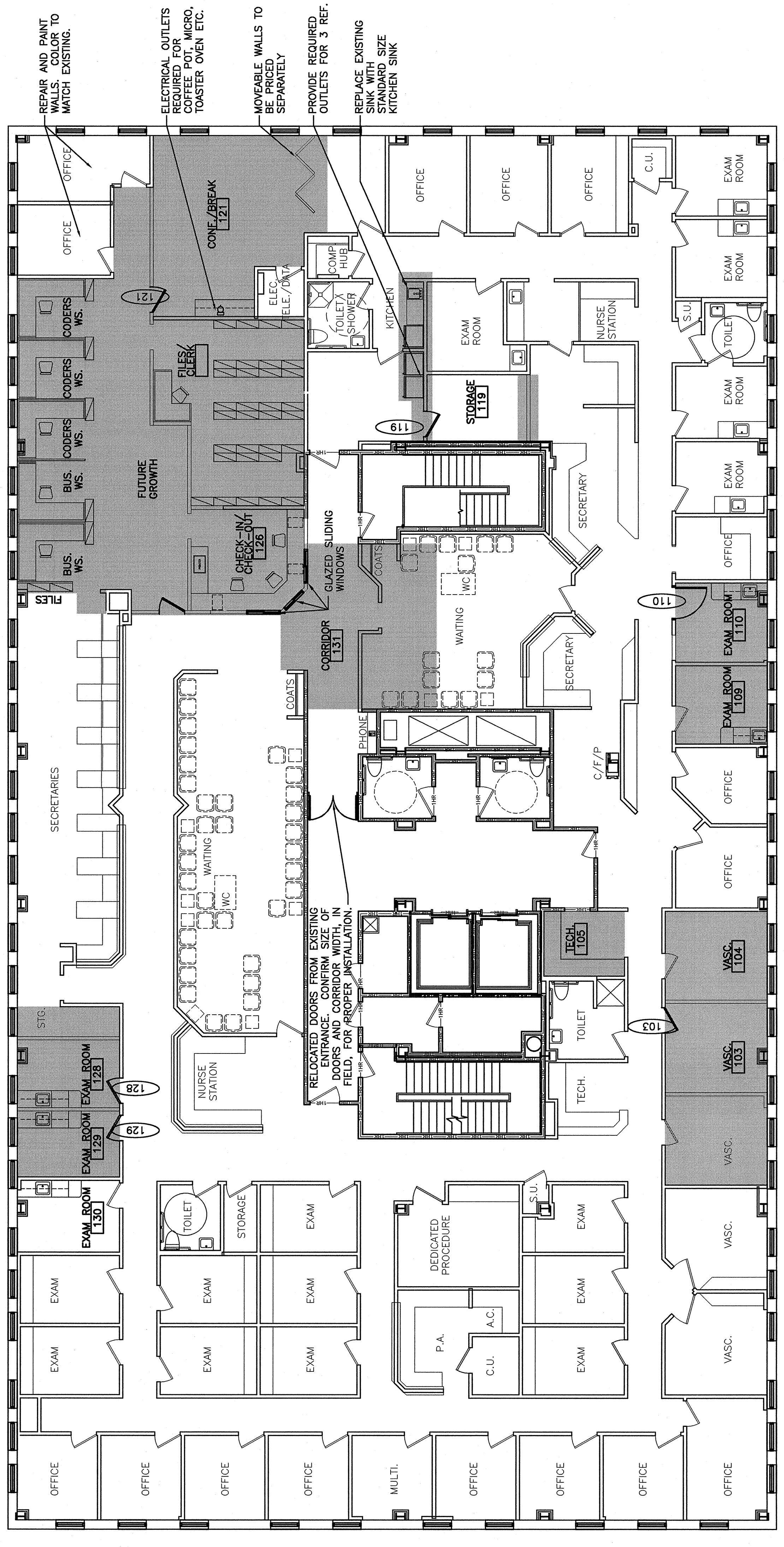
J1 DEMOLITION PLAN

1/8"=1'-0"

FINISH NOTES:

1. CARPET IN NEW OFFICES/ADMIN, CHECK-IN/CHECK-OUT, FILES, CONFERENCE ROOMS, CONFERENCE/BREAK/KITCHEN. PATCH CARPET WHERE POSSIBLE.
2. VCT IN NEW EXAM ROOMS AND STORAGE.
3. ALL NEW EXAM ROOMS TO HAVE NEW (PRE-FABRICATED) CASEWORK. (CASEWORK TO BE PRICED OUT SEPARATELY)
4. CHECK-IN/CHECK-OUT RECEPTION DESK TO BE CUSTOM MILLWORK WITH GLAZED SLIDING WINDOWS.
5. ALL NEW WALLS TO BE CONSTRUCTED TO UNDERSIDE OF DECK, EXCEPT NORTH WALL OF FILE ROOM.

TOTAL # OF OFFICES: 14
TOTAL # OF EXAM ROOMS: 20



A1 FLOOR PLAN

1/8"=1'-0"

GENERAL NOTES:

1. RELOCATE SPRINKLERS AS REQUIRED.
2. REPAIR AND REPAINT EXISTING FINISH AS NEEDED.
3. CLEAN ENTIRE SPACE

ISSUED FOR CONSTRUCTION
1-4-06

PROJECT: **SM RT**
ARCHITECTURE ENGINEERING PLANNING
144 Fore Street P.O. Box 618
Portland, Maine 04104
Tel: (207) 772-3846
Fax: (207) 772-1070

PROJECT NO: 06110-01
JOB CAP/DRAWN: ART
A/E OF RECORD: CDP
SHEET NO: AE101

DATE: 1-4-06
GRAPHIC SCALE: 1"=10'-0"

PROJECT TITLE: **887 CONGRESS ST
THE MAINE SURGICAL GROUP
4TH FLOOR RENOVATION**
DEMOLITION &
FLOOR PLAN