

NOTE:

- SEE M-001 FOR THE LEGEND AND ABBREVIATIONS.
- SUPPLY AND RETURN AIRFLOWS HAVE BEEN DESIGNED TO MATCH THE ORIGINAL CONSTRUCTION DOCUMENTS BALANCING SCHEME. RETURN AIR FLOWS CAN BE ADJUSTED IN THE FIELD NO ACCOMMODATE EXISTING CONDITIONS.

KEYNOTES

| KEYNOTE NUMBER | KEYNOTE DESCRIPTION |
|----------------|---|
| 1 | EXISTING REGISTER/DIFFUSER/GRILLE TO REMAIN. ADJUST FOR NEW CEILING LAYOUT AS NECESSARY. |
| 2 | REBALANCE EXISTING RGD TO INDICATED AIRFLOW. |
| 3 | EXISTING VAV SHALL BE RE-BALANCED FROM EXISTING AIRFLOWS. SEE VAV RE-BALANCE SCHEDULE ON M-801. TAB CONTRACTOR SHALL VERIFY THAT ALL EXISTING RGD'S NOT EFFECTED WITHIN SCOPE OF WORK CONTINUE TO PROVIDE CURRENT AIRFLOWS. |

| REV | DESCRIPTION | DATE |
|-----|-------------------------|---------|
| 0 | ISSUED FOR CONSTRUCTION | 4-25-17 |

ISSUED FOR CONSTRUCTION
4-25-17

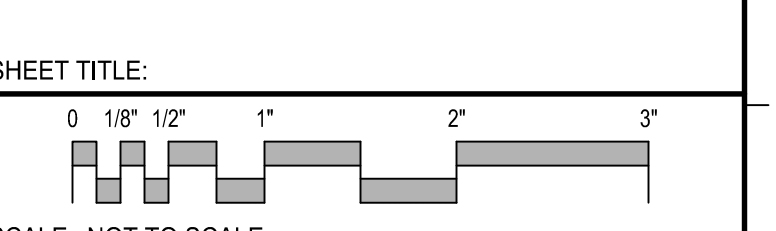
CURRENT ISSUE STATUS:

PROJECT NORTH:
SMRT Architects and Engineers
144 Fore Street
Portland, Maine 04104
1.877.700.7678
www.smrtinc.com

ARCHITECTURE | ENGINEERING | PLANNING | INTERIORS | ENERGY **SMRT**

**MAINE MEDICAL PARTNERS
SURGICAL CARE RENOVATIONS**

PORTLAND, MAINE
**LEVEL 4
HVAC DUCTWORK PLAN**



SCALE: NOT TO SCALE

| | | | |
|------------------|-----|--------------|-------------|
| PROJECT MANAGER: | DJV | PROJECT NO.: | 17027 |
| A/E OF RECORD: | RMW | JOB CAPTAIN: | CAH |
| DRAWN BY: | CWF | SMRT FILE: | MH101-17027 |

MH101
SHEET No. ©COPYRIGHT 2015 SMRT INC.

LEVEL 4 - HVAC DUCTWORK PLAN A1
1/8" = 1' - 0"