

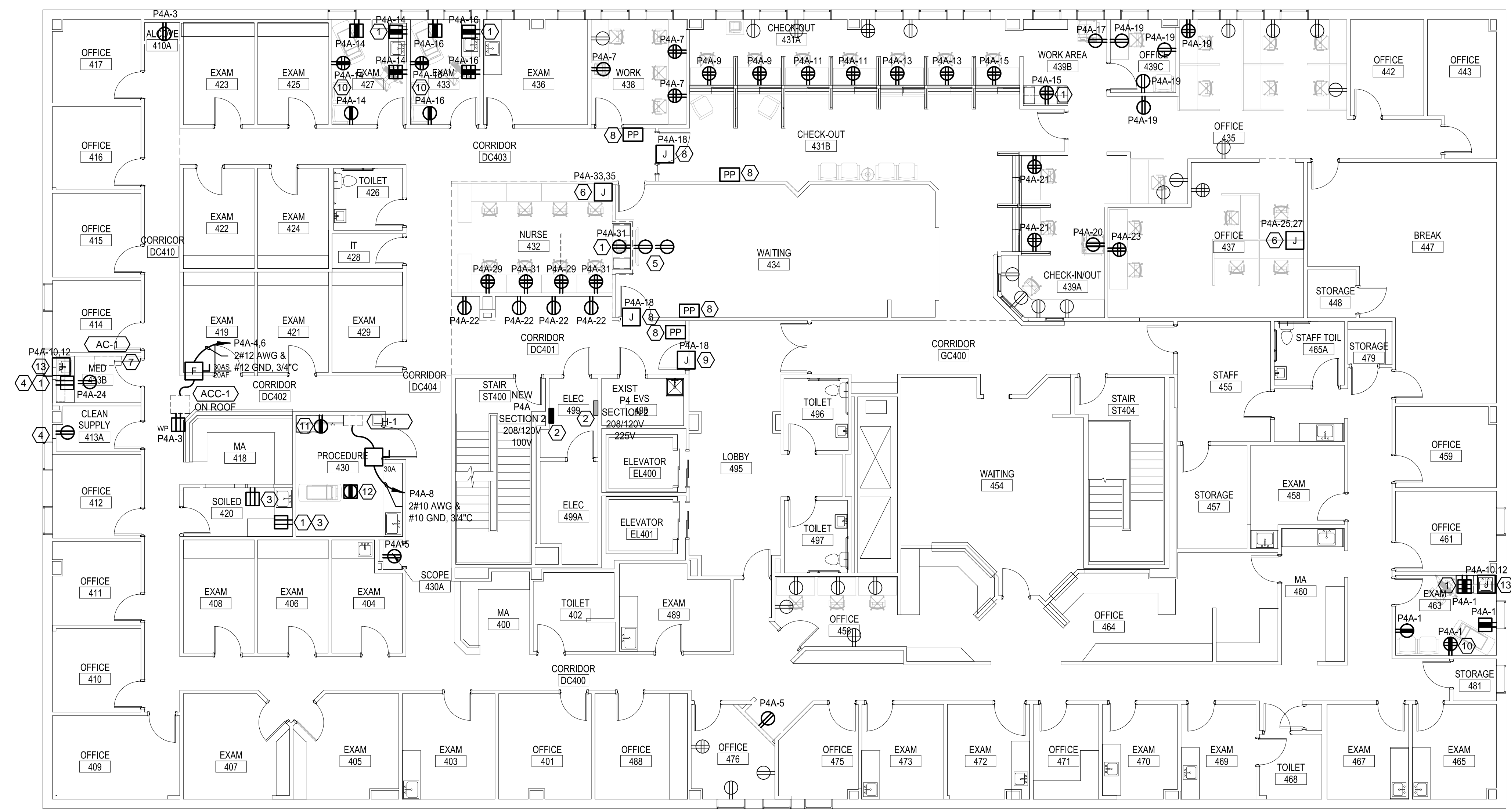
DIRECTORY	KVA LOAD			CKT NO.	BKR AMPS	A B C			BKR AMPS	CKT NO.	KVA LOAD			DIRECTORY	
	A	B	C			A	B	C							
RECEPTS EXAM RM	0.9			1	20				20	2	0.2			AC OUTLET (1)	
RECEPTS NURSE STATION		0.6		3	20				20	4	1.2			SPLIT SYSTEM MED RM	
ALCOVE RECEPTS			0.4	5	20				20	6		1.2		HUMIDIFIER H-1	
RECEPTS WORK ROOM	0.8			7	20				25	8	0.8			HEAT TRACE (2)	
RECEPTS CHECK-OUT		0.8		9	20				15	10		1.0		RECEPTS EXAM 427	
RECEPTS CHECK-OUT			0.8	11	20				15	12			1.0	RECEPTS EXAM 433	
RECEPTS CHECK-OUT	0.8			13	20				20	14	1.3			AUTO DOOR OPERATORS	
RECEPTS CHECK-OUT			0.8	15	20				20	16		1.3		COPIER CHECK IN/OUT	
OFFICE COPIER RECEPT			1.0	17	20				20	18			1.0	RECEPTS CORRIDOR DC401	
RECEPTS OFFICE AREA	0.9			19	20				20	20	1.0			UNDER COUNTER REFRIG	
RECEPTS CHECK-IN/OUT		0.8		21	20				20	22		0.8		SPARE	
RECEPTS FILES			0.8	23	20				20	24			0.2	SPARE	
MODULAR FURNITURE FILES	1.0			25	20				20	26				SPARE	
MODULAR FURNITURE FILES		1.0		27	20				20	28				SPARE	
RECEPTS NURSE 432			0.8	29	20				20	30				SPARE	
RECEPTS NURSE 432	0.9			31	20				20	32				SPARE	
RECEPTS NURSE 432		1.0		33	20				20	34				SPACE	
RECEPTS NURSE 432			1.0	35	20				20	36				SPACE	
SPARE				37	20				20	38				SPACE	
SPARE				39	20				20	40				SPACE	
SPARE				41	20				20	42				SPACE	
SUB-TOTAL				5.3	5.0	4.8	NEUTRAL BUS			3.3	4.3	3.4	SUB-TOTAL		
							GROUND BUS								
VOLTAGE: 208Y/120V				3 PHASE			4 WIRE			100 AMP BUS			TOTAL KVA A		
MAIN LUGS ONLY							100 AMP LUGS						TOTAL KVA B		
MOUNTING: SURFACE													TOTAL KVA C		
SC RATING: 10,000 AIC													TOTAL KVA		
NOTES: (1) EXISTING CIRCUIT TO BE RE-FED FROM NEW PANELBOARD.															
(2) PROVIDE GFCI CIRCUIT BREAKER WITH 5mA.															

**KEYED NOTES:**

- MOUNT RECEPTACLE 42" AFF TO BOTTOM OF DEVICE.
- NEW PANELBOARD P4A TO BE FED FROM A NEW 100 AMP, THREE POLE BREAKER IN EXISTING SQUARE D PANEL P4 SECTION 2. REMOVE ONE 20 AMP, 120 VOLT CIRCUIT FROM P4 SECTION 2 AND EXTEND TO NEW PANELBOARD P4A TO CREATE SPACE FOR NEW THREE POLE BREAKER. FEEDER FOR NEW PANELBOARD P4A TO BE 4 #2 AWG & #8 GND, 1-1/4"C.
- RELOCATE RECEPTACLES FROM CURRENT LOCATIONS SHOWN ON ED101. EXTEND EXISTING WIRING AS REQUIRED TO ACCOMMODATE NEW RECEPTACLE LOCATIONS.
- PROVIDE NEW RECEPTACLES FED FROM THE SAME BRANCH CIRCUIT THAT FEED THE RECEPTACLE SHOWN TO BE REMOVED ON ED101. EXTEND EXISTING WIRING AS REQUIRED TO FEED NEW RECEPTACLES.
- RELOCATE RECEPTACLES SHOWN TO BE REMOVED ON ED101 TO BE REINSTALLED AT LOCATION SHOWN. MOUNT ONE RECEPTACLE AT 18" AFF AND THE SECOND AT 84" AFF FOR SCREEN. EXTEND EXISTING WIRING AS REQUIRED TO ACCOMMODATE NEW DEVICE LOCATIONS.
- PROVIDE POWER FOR MODULAR FURNITURE. WIRING TO BE 2 #12 AWG PHASE CONDUCTORS, 2 #12 AWG NEUTRALS AND 2 #12 GND, 3/4"C.
- INDOOR SECTION OF SPLIT SYSTEM TO BE FED VIA OUTDOOR CONDENSING UNIT. COORDINATE WITH EQUIPMENT SUPPLIER FOR WIRING REQUIRED BETWEEN INDOOR AND OUTDOOR SECTIONS OF SPLIT SYSTEM.
- PROVIDE POWER FOR AUTOMATIC DOOR OPERATORS AND WIRING BETWEEN OPERATORS AND PUSH PADS. FIELD COORDINATE WITH OWNER FOR EXACT MOUNTING LOCATION OF PUSH PADS.
- PROVIDE POWER FOR DELAYED EGRESS DOOR HARDWARE. COORDINATE WITH DOOR HARDWARE INSTALLER FOR EXACT LOCATION OF ELECTRICAL CONNECTION.
- MOUNT RECEPTACLE 60" AFF ABOVE EQUIPMENT RAIL.
- MOUNT RECEPTACLE 42" AFF AND FEED FROM THE SAME BRANCH CIRCUIT THAT FEEDS OTHER PROCEDURE ROOM OUTLETS.
- PROVIDE A DUPLEX POKE THROUGH STYLE FLOOR BOX WITH INSERTS FOR VOICE DATA JACKS. COORDINATE WITH OWNER FOR EXACT MOUNTING LOCATION OF FLOOR BOX.
- PROVIDE POWER FOR HOT WATER PIPING HEAT TRACE FURNISHED BY PLUMBING CONTRACTOR. COORDINATE WITH PLUMBING CONTRACTOR FOR EXACT LOCATION OF ELECTRICAL CONNECTION.

**NOTES:**

- SEE E-001 FOR THE LEGEND AND GENERAL NOTES.



REV	DESCRIPTION	DATE
0	ISSUED FOR CONSTRUCTION	4-25-17

**ISSUED FOR CONSTRUCTION**  
4-25-17  
CURRENT ISSUE STATUS:

PROJECT NORTH:

SMRT Architects and Engineers  
144 Fore Street  
Portland, Maine 04104  
1.877.700.7678  
www.smrta.com

ARCHITECTURE | ENGINEERING | PLANNING | INTERIORS | ENERGY

**SMRT**

MAINE MEDICAL PARTNERS  
SURGICAL CARE RENOVATIONS

PORTLAND, MAINE

LEVEL 4  
POWER PLAN

SHEET TITLE:  
0 1/8" 1/2" 1" 2" 3"

SCALE: AS NOTED

PROJECT MANAGER: DJV PROJECT NO: 17027  
A/E OF RECORD: DJT  
JOB CAPTAIN: CAH  
DRAWN BY: CDS  
SMRT FILE: EP101-17027 SHEET No.

**LEVEL 4 - POWER PLAN** (A1)  
1/8" = 1' - 0"

**EP101**