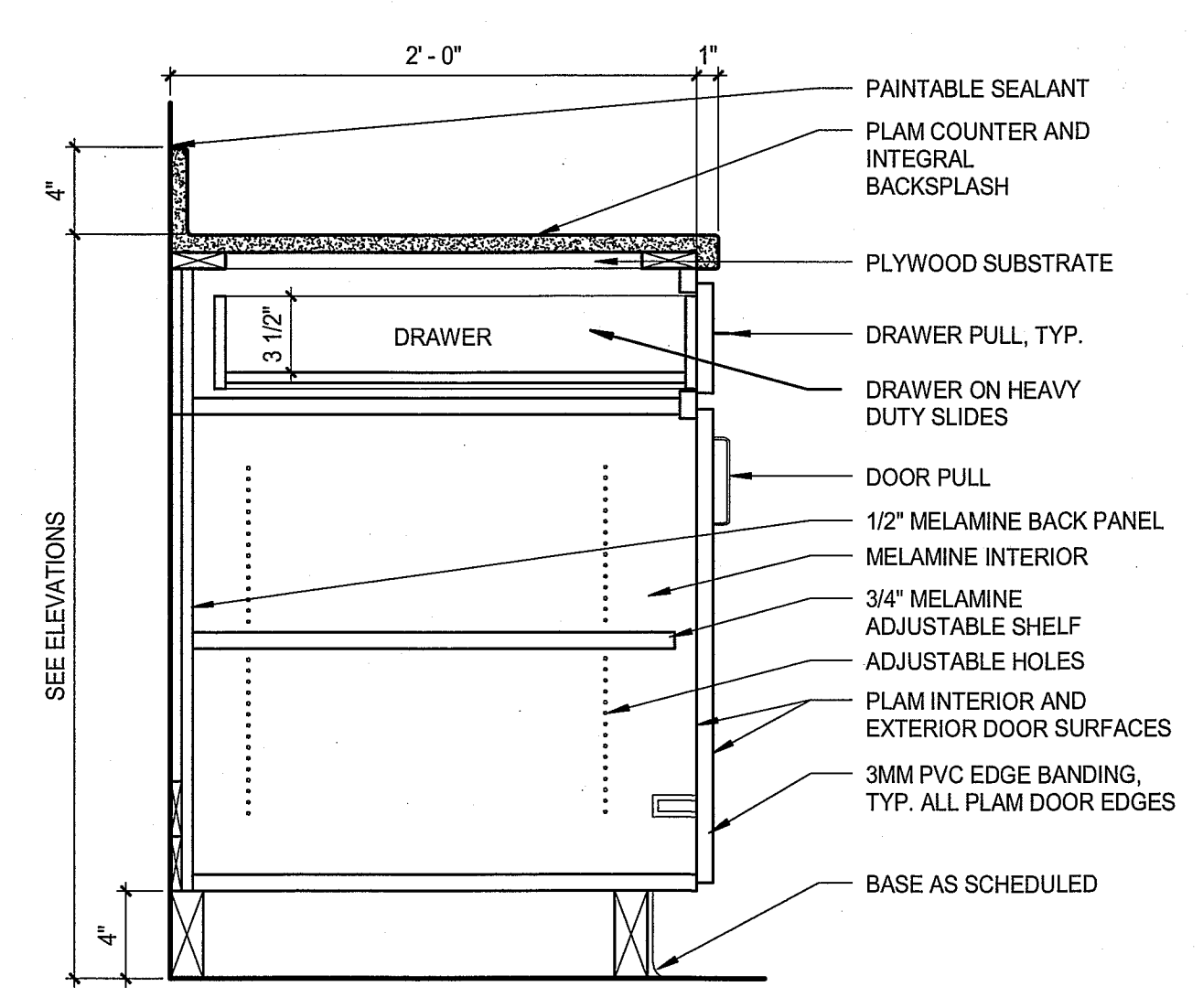
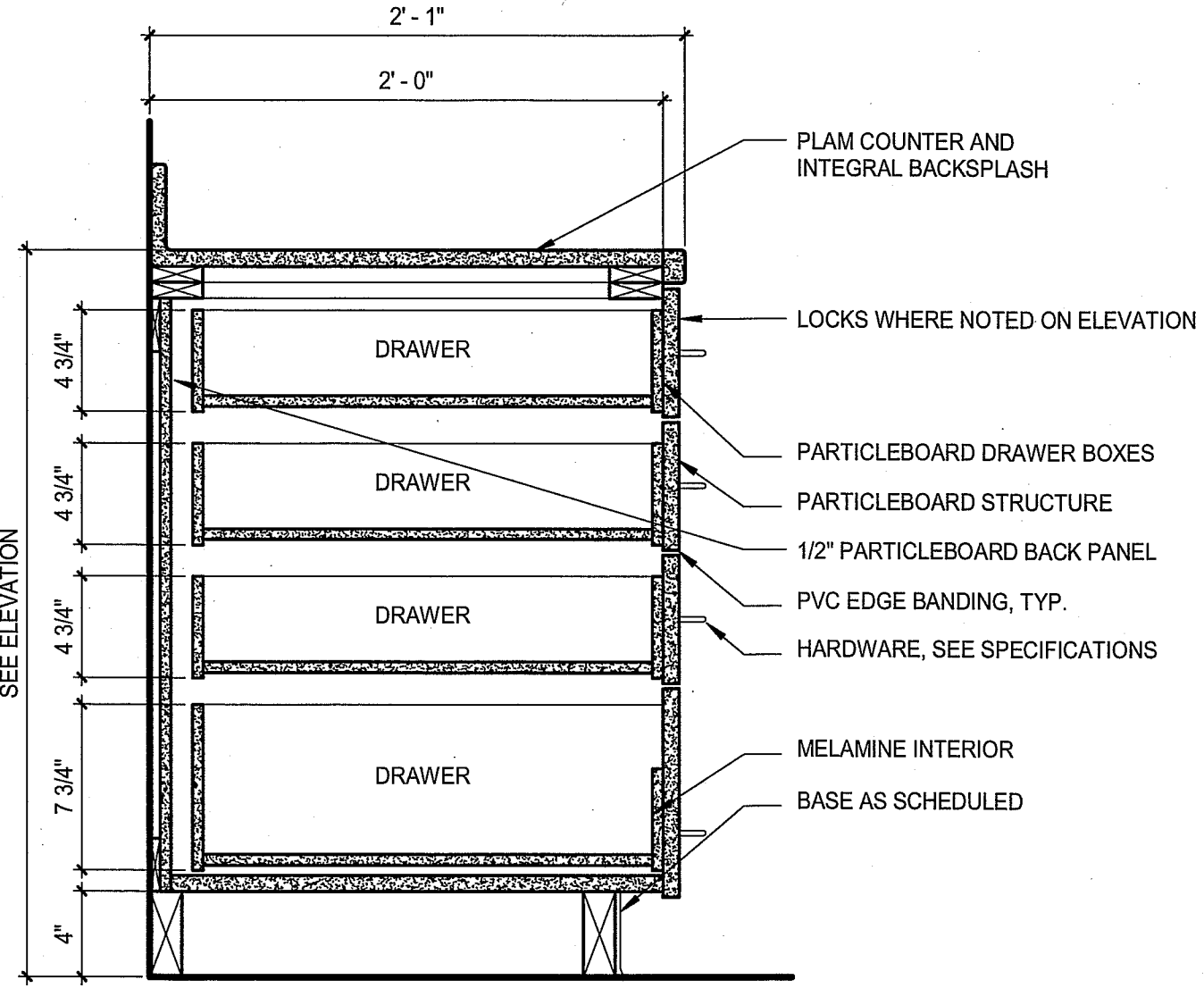


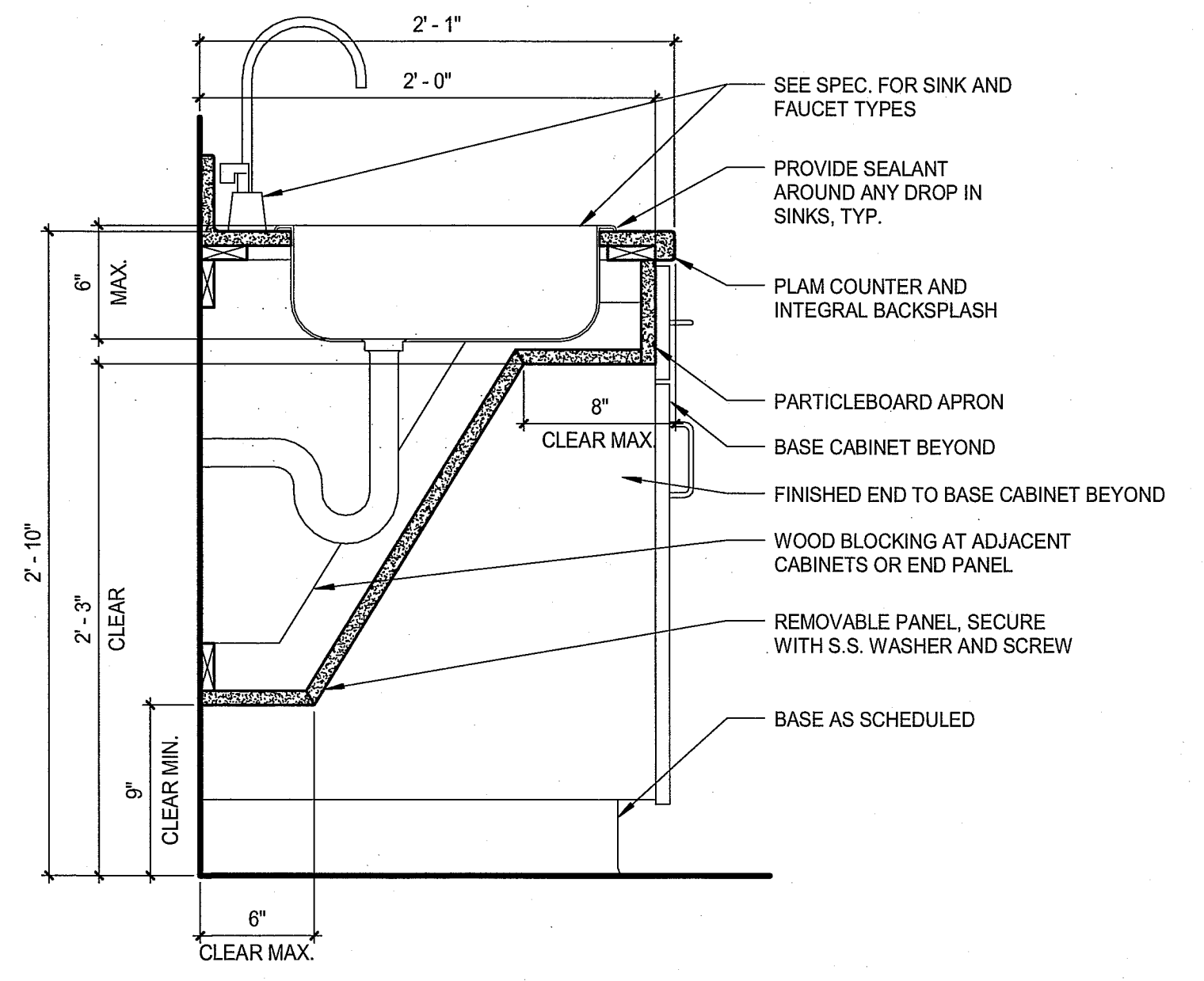
CASEWORK DETAIL (H12)  
1 1/2" = 1'-0"



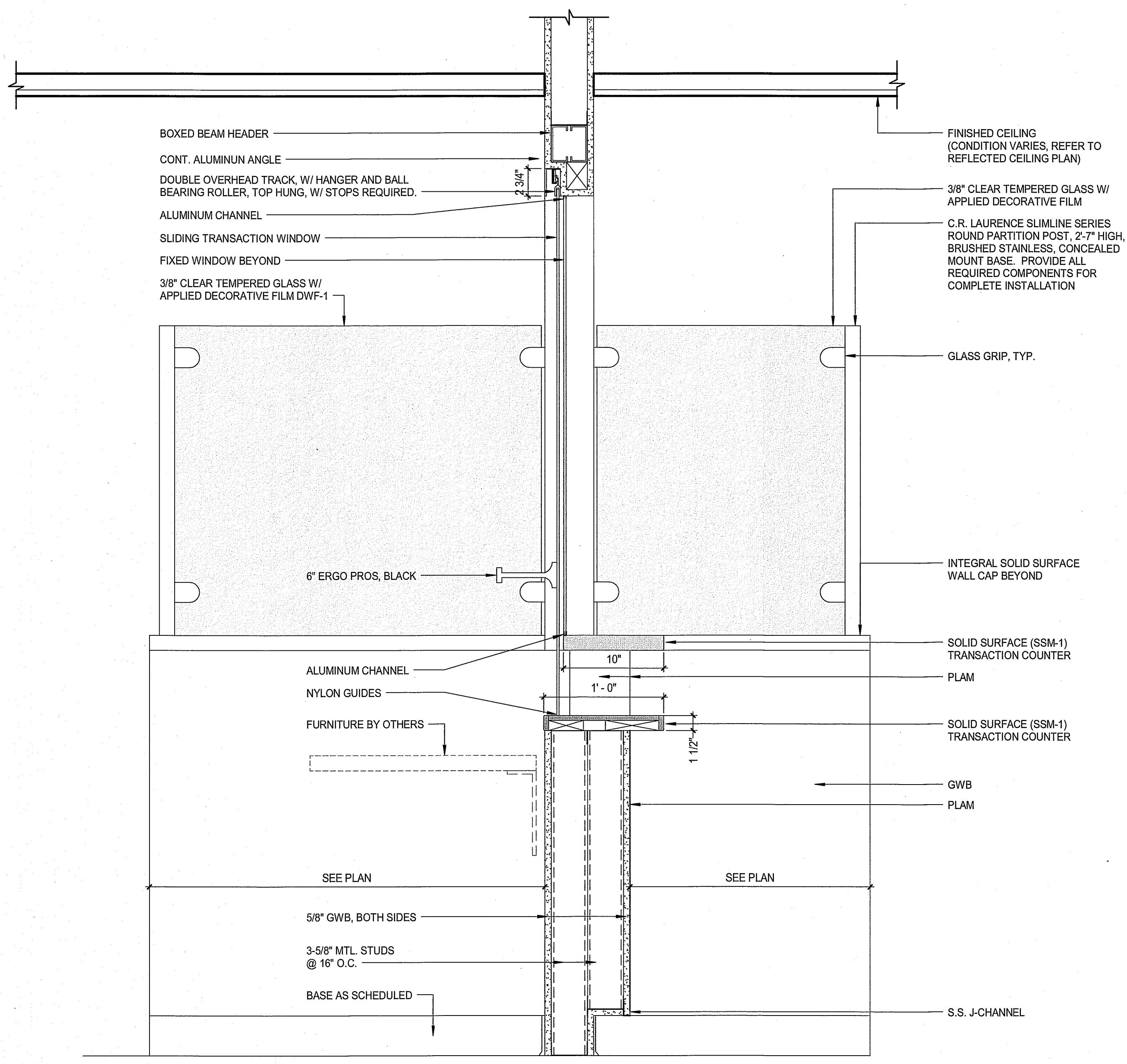
CASEWORK DETAIL (H9)  
1 1/2" = 1'-0"



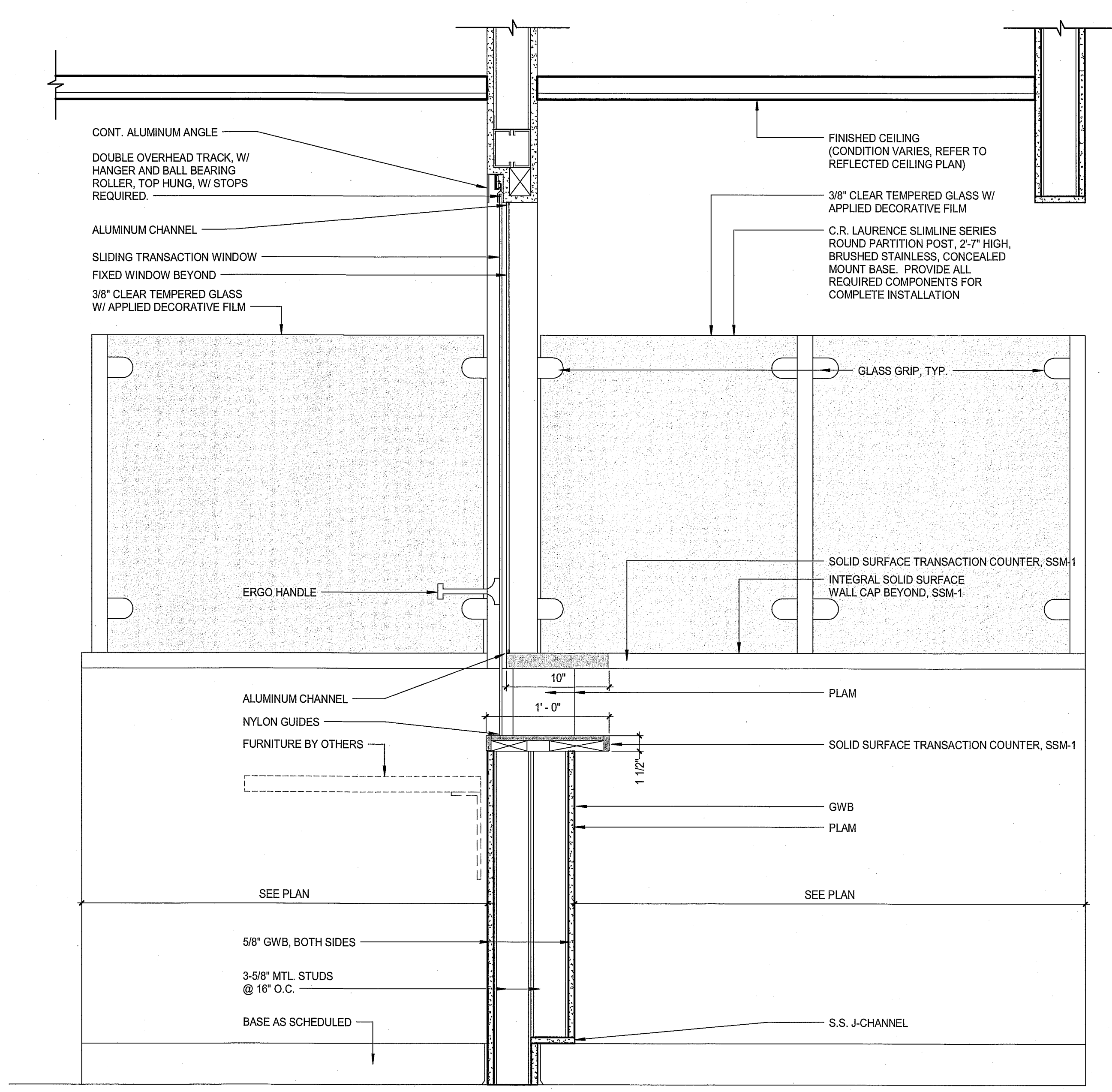
CASEWORK DETAIL (H5)  
1 1/2" = 1'-0"



CASEWORK DETAIL (H1)  
1 1/2" = 1'-0"



SECTION - CHECK-OUT LOW (A8)  
1 1/2" = 1'-0"



SECTION - CHECK-OUT LOW LONG (A1)  
1 1/2" = 1'-0"

0	ISSUED FOR CONSTRUCTION	4-25-17
REV	DESCRIPTION	DATE

ISSUED FOR CONSTRUCTION  
4-25-17

CURRENT ISSUE STATUS:

PROJECT NORTH:

4-25-17

SMRT Architects and Engineers  
144 Fore Street/P.O. Box 618  
Portland, Maine 04104

ARCHITECTURE | ENGINEERING | PLANNING | INTERIORS | ENERGY **SMRT**

**MAINE MEDICAL PARTNERS  
SURGICAL CARE RENOVATIONS**

PORTLAND, MAINE

**DETAILS**

SHEET TITLE:

SCALE: AS NOTED

PROJECT MANAGER:	DJV	PROJECT NO.:	17027
A/E OF RECORD:	DJV		
JOB CAPTAIN:	CAH		
DRAWN BY:	CAH/JCH		
SMRT FILE:	AE502-17027	SHEET NO.:	<b>AE502</b>

© COPYRIGHT 2015 SMRT INC.