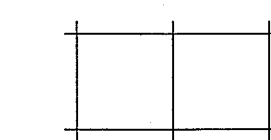
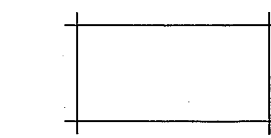
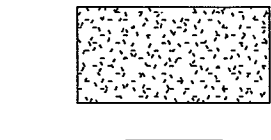
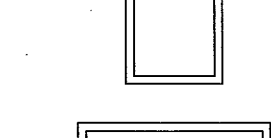
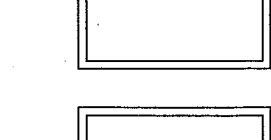
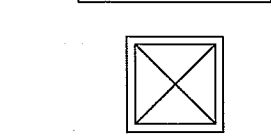
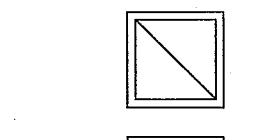
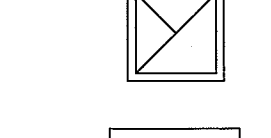


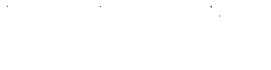


**CEILING LEGEND:**

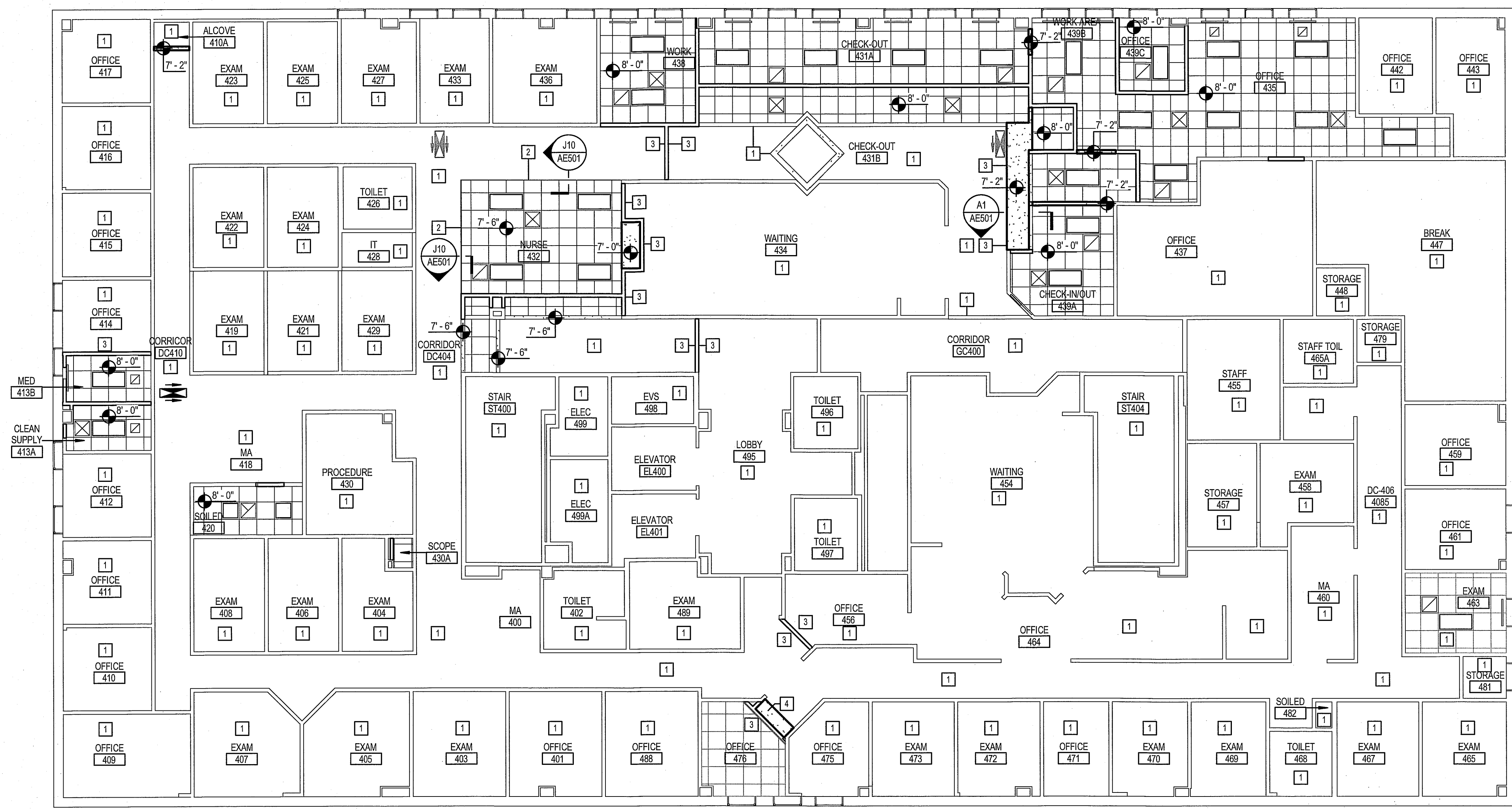
-  2x2 CEILING TILE AND GRID
-  2x4 CEILING TILE AND GRID
-  GWB CEILING
-  2x2 LIGHT FIXTURE
-  2x4 LIGHT FIXTURE
-  1x4 LIGHT FIXTURE
-  SUPPLY DIFFUSER
-  RETURN DIFFUSER
-  EXHAUST DIFFUSER
-  LINEAR DIFFUSER
-  EXIT SIGN

**CEILING NOTES:**

1. SEE G-001 FOR GENERAL PROJECT NOTES.
2. SEE FINISH SCHEDULE FOR CEILING AND CEILING GRID TYPES.
3. EXCEPT WHERE INDICATED, CENTER CEILING GRIDS IN ROOMS. USE HALF TILES OF GREATER @ PERIMETERS WHEN POSSIBLE.
4. ALIGN CEILING ITEMS AS SHOWN, WITH COMMON CENTERLINES TYPICALLY. CENTER ITEMS IN CEILING, OR IN AREAS UNLESS INDICATED OTHERWISE.
5. WHERE REGULAR OR BEVELED TILE IS USED, PAINT ALL CUT EDGES TO MATCH.
6. CAULK JOINT BETWEEN CEILING GRID (WALL ANGLE) AND WALL WHERE GAPS ARE LARGER THAN 1/8" OR GREATER.
7. PROVIDE ACCESS PANELS AS REQUIRED IN GWB CEILINGS FOR ACCESS AS REQUIRED BY ALL TRADES.
8. FIRE SPRINKLERS SHALL BE CENTERED IN CEILING TILE OR HALF TILE AS SHOWN. FIRE SPRINKLERS SHALL BE LOCATED IN ALIGNMENT WITH OTHER CEILING ITEMS AND SHALL BE PLACED IN COORDINATION WITH LIGHT FIXTURE POSITIONS INDICATED, TYPICAL.
9. FIRE SPRINKLERS ARE SHOWN FOR COORDINATION PURPOSES ONLY. ADDITIONAL SPRINKLER HEADS MAY BE REQUIRED FOR CODE COMPLIANCE, AS DETERMINED BY THE FIRE PROTECTION DESIGNER. SPRINKLERS ARE NOT SHOWN IN ALL AREAS WHERE REQUIRED. FIRE PROTECTION CONTRACTOR SHALL BE RESPONSIBLE FOR PROVIDING A COMPLETE AND FULLY CODE COMPLIANT SYSTEM, INCLUDING HEADS NOT INDICATED IN THIS DRAWING. SIDEWALL MOUNT SPRINKLER HEADS UNDER BALCONIES ARE NOT SHOWN IN THE CEILING PLANS.
10. SEE MECHANICAL, ELECTRICAL AND PLUMBING DRAWINGS FOR ADDITIONAL INFORMATION.
11. WHERE ARCHITECTURAL DRAWINGS DEPICT MECHANICAL OR ELECTRICAL ITEMS OR EQUIPMENT (LIGHTS, DIFFUSERS, ETC.) INSTALLATION OF SUCH ITEMS SHALL BE COORDINATED WITH EACH RESPECTIVE TRADE SUB-CONTRACTOR.
12. WHERE DRAWINGS DO NOT ACCESS INSTALLATION METHODOLOGY, THE CONTRACTOR SHALL BE BOUND TO PERFORM IN STRICT COMPLIANCE WITH THE MANUFACTURER'S SPECIFICATIONS, AND STANDARD INDUSTRY STANDARDS.

**KEYED NOTES:**

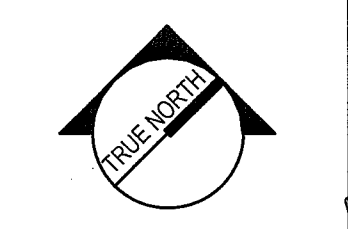
- 1 EXISTING CEILING SYSTEM TO REMAIN.
- 2 4" AXIOM TRIM.
- 3 PATCH TO MATCH EXISTING CEILING SYSTEM AT NEW WALL PARTITION.
- 4 ALIGN B.O. SOFFIT W/ B.O. EXISTING ADJACENT SOFFIT.



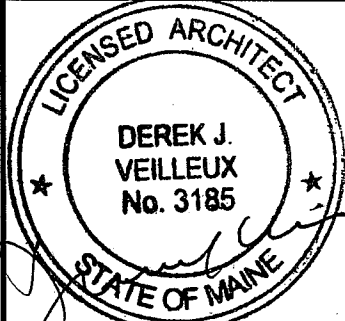
REV	DESCRIPTION	DATE
0	ISSUED FOR CONSTRUCTION	4-25-17

**ISSUED FOR CONSTRUCTION**  
4-25-17

CURRENT ISSUE STATUS:



PROJECT NORTH:



4.25.17

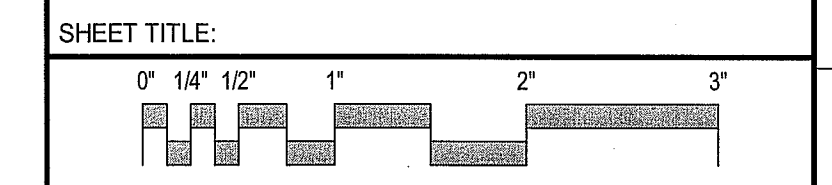
SMRT Architects and Engineers  
144 Fore Street/P.O. Box 618  
Portland, Maine 04104

ARCHITECTURE | ENGINEERING | PLANNING | INTERIORS | ENERGY **SMRT**

**MAINE MEDICAL PARTNERS  
SURGICAL CARE RENOVATIONS**

PORTLAND, MAINE

**LEVEL 4 REFLECTED CEILING  
PLAN**



SCALE: AS NOTED

PROJECT MANAGER: DJV PROJECT NO: 17027  
A/E OF RECORD: DJV  
JOB CAPTAIN: CAH  
DRAWN BY: CAH/JCH  
SMRT FILE: AE111-17027 SHEET No.

**AE111**

**LEVEL 4 - REFLECTED CEILING PLAN** A1  
1/8" = 1'-0"