

DEMOLITION KEYED NOTES:

- 1 REMOVE EXISTING PARTITION COMPLETE.
- 2 REMOVE EXISTING CASEWORK COMPLETE.
- 3 REMOVE EXISTING DOOR, FRAME, AND HARDWARE COMPLETE.
- 4 REMOVE AND RELOCATE EXISTING CASEWORK TO WORK AREA 439B. REFER TO NEW PLAN.
- 5 REMOVE EXISTING CEILING SYSTEM COMPLETE.
- 6 REMOVE EXISTING FLOORING SYSTEM COMPLETE.
- 7 REMOVE PORTION OF EXISTING PARTITION FOR INSTALLATION OF NEW DOOR OR WINDOW. SEE FLOOR PLAN FOR LOCATION.
- 8 REMOVE PORTION OF EXISTING CEILING TO ALIGN WITH NEW PARTITION. SEE FLOOR PLAN FOR LOCATION.
- 9 REMOVE & RELOCATE DOOR, FRAME, AND HARDWARE TO DOOR 414.
- 10 REMOVE DOOR LEAF INCLUDING HINGES ONLY. DOOR FRAME TO REMAIN. PROVIDE HINGE PLATES ON EXISTING FRAME. PAINT TO MATCH EXISTING.
- 11 REMOVE AND RELOCATE EXISTING WALL MOUNTED MONITOR. SEE FLOOR PLAN FOR NEW LOCATION.
- 12 RELOCATE EXISTING FREE-STANDING CABINET TO CHECK-OUT 439A. REFER TO NEW FLOOR PLAN.
- 13 REMOVE ONE BASE & UPPER CABINET. CUT BACK COUNTER TO ALIGN W/ EXISTING CASEWORK TO REMAIN. PROVIDE FINISHED END PANELS ON REMAINING BASE AND UPPER CABINETS AND NEW COUNTER EDGE.
- 14 REMOVE PORTION OF EXISTING FULL HEIGHT WALL ASSEMBLY TO B.O. ADJACENT SOFFIT. FINISHED HEIGHT TO ALIGN WITH EXISTING ADJACENT SOFFIT. REFER TO REFLECTED CEILING PLAN AND FLOOR PLAN.
- 15 SYSTEMS FURNITURE TO BE REMOVED BY OWNERS/VENDOR.
- 16 REMOVE WALL PARTITION UP TO B.O. FINISHED SOFFIT. 7'-2" AFF. REFER TO REFLECTED CEILING PLAN AND FLOOR PLAN.
- 17 REMOVE WALL PARTITION UP TO B.O. FINISHED SOFFIT. 7'-6" AFF. REFER TO REFLECTED CEILING PLAN AND FLOOR PLAN.
- 18 REMOVE AND RELOCATE DOOR, FRAME AND HARDWARE TO DOOR 476.
- 19 REMOVE AND RELOCATE EXISTING SCALE. REFER TO NEW WORK FOR LOCATION.
- 20 EXISTING SCALE TO BE REMOVED BY OWNER.
- 21 REMOVE AND SALVAGE PUSH BUTTON LOCK SYSTEM FOR RE-USE.
- 22 EXISTING SOFFIT ABOVE TO REMAIN. REFER TO REFLECTED CEILING PLAN FOR MORE INFORMATION.

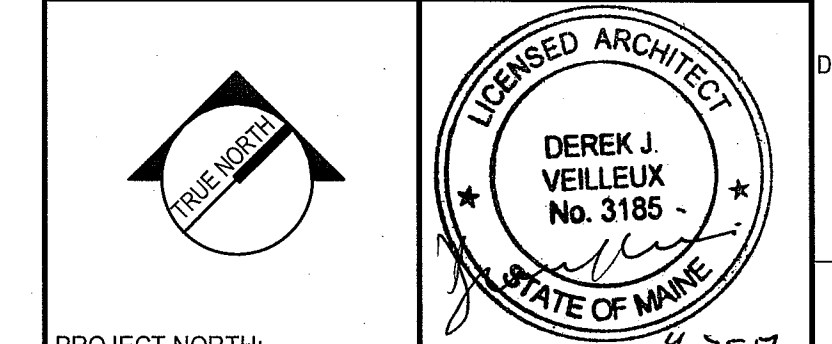
DEMOLITION NOTES:

1. COORDINATE EXTENT OF DEMOLITION WITH LOCATIONS OF PARTITIONS DESCRIBED ON PLANS AND WITH LOCATIONS OF FINISHES NOTED AS EXISTING TO REMAIN.
2. ANY WALL, PARTITION OR SURFACE DISTURBED BECAUSE OF NEW WORK OR DEMOLITION SHALL BE PATCHED AND FINISHED CONTINUOUSLY TO THE NEAREST CORNER UNLESS NOTED OTHERWISE. MATCH EXISTING ADJACENT CONSTRUCTION FINISHES, CONTINUITY, AND FIRE RATINGS UNLESS NOTED OTHERWISE.
3. PROTECT ALL FINISHES, MATERIALS, AND EQUIPMENT NOTED AS EXISTING TO REMAIN. CONTRACTOR SHALL BE RESPONSIBLE TO REPLACE ALL FINISHES, MATERIALS AND EQUIPMENT DAMAGED DURING CONSTRUCTION.
4. DIMENSIONS INDICATED ± ARE EXISTING CONDITION DIMENSIONS TO BE VERIFIED IN FIELD.
5. COORDINATE THE REMOVAL OF MISC. ACCESSORIES (INCLUDING BATHROOM ACCESSORIES). COORDINATE W/ OWNER ACCESSORIES TO BE SALVAGED FOR REUSE.
6. CLEARLY IDENTIFY AND TAG MECHANICAL, PLUMBING, AND ELECTRICAL FIXTURES/EQUIPMENT THAT ARE STILL IN USE PRIOR TO DEMOLITION TO AVOID ACCIDENTAL REMOVAL.
7. WALLS INDICATED WITH A DASHED LINE ARE TO BE REMOVED COMPLETE. DETERMINE IF WALL IS BEARING PRIOR TO REMOVAL. IF SO, CONTACT ARCHITECT/ENGINEER IMMEDIATELY.
8. SEE ELECTRICAL DRAWINGS FOR THE SCOPE OF DEMOLITION IN THAT DISCIPLINE.
9. SEE MECHANICAL DRAWINGS FOR THE SCOPE OF DEMOLITION IN THAT DISCIPLINE.
10. SEE PLUMBING DRAWINGS FOR THE SCOPE OF DEMOLITION IN THAT DISCIPLINE.

REV	DESCRIPTION	DATE
0	ISSUED FOR CONSTRUCTION	4-25-17

ISSUED FOR CONSTRUCTION
4-25-17

CURRENT ISSUE STATUS:

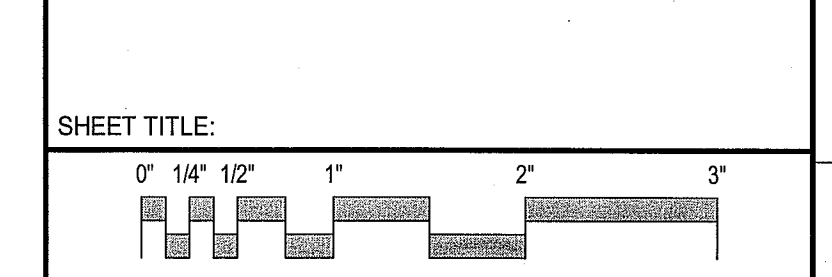


PROJECT NORTH:
SMRT Architects and Engineers
144 Fore Street/P.O. Box 618
Portland, Maine 04104

ARCHITECTURE | ENGINEERING | PLANNING | INTERIORS | ENERGY **SMRT**

**MAINE MEDICAL PARTNERS
SURGICAL CARE RENOVATIONS**

PORTLAND, MAINE
LEVEL 4 DEMOLITION PLAN



PROJECT MANAGER: DJV	PROJECT NO: 17027
A/E OF RECORD: DJV	
JOB CAPTAIN: CAH	
DRAWN BY: CAH/JCH	
SMRT FILE: AD101-17027	SHEET No. AD101

LEVEL 4 - DEMOLITION PLAN
1/8" = 1'-0" **A1**