

- PLAN NOTES:**
- SEE G1001 FOR GENERAL PROJECT NOTES, LEGENDS AND ABBREVIATIONS.
 - CONTRACTOR IS RESPONSIBLE FOR REVIEWING CODE COMPLIANCE PLANS AND NOTIFYING THE ARCHITECT OF CONFLICTS BETWEEN WHAT IS IN THE FIELD AND ON THE CODE DOCUMENTS.
 - DIMENSIONS ARE FACE OF CONCRETE, FACE OF MASONRY AND CENTERLINE OF STUD, UNLESS NOTED OTHERWISE.
 - DOOR JAMBS (HINGE SIDE) SHALL BE 6" FROM CORNER IN STUD PARTITIONS UNLESS NOTED OTHERWISE.
 - REFER TO DETAILS FOR ADDITIONAL DIMENSIONING INFORMATION.
 - FURNITURE AND OWNER PROVIDED EQUIPMENT ARE INDICATED BY DASHED LINE TYPE.
 - CONTRACTOR IS RESPONSIBLE FOR THE COORDINATION OF OWNER PROVIDED EQUIPMENT INCLUDING BUT NOT LIMITED TO DIMENSIONAL INFORMATION, AND MECHANICAL, ELECTRICAL AND PLUMBING REQUIREMENTS.

- PLAN KEYED NOTES:**
- RELOCATED DOOR, HARDWARE, AND FRAME.
 - RELOCATED WALL MOUNTED MONITOR, 60" AFF O.C.
 - RELOCATED CASEWORK.
 - RELOCATED FREE-STANDING CABINET.
 - PROVIDE FINISHED END PANEL AND COUNTER EDGE ON EXISTING CASEWORK. MATCH EXISTING.
 - INFILL WALL OPENING. MATCH EXISTING WALL TYPE.

REV	DESCRIPTION	DATE
0	ISSUED FOR CONSTRUCTION	4-25-17

ISSUED FOR CONSTRUCTION
4-25-17

CURRENT ISSUE STATUS:

PROJECT NORTH:

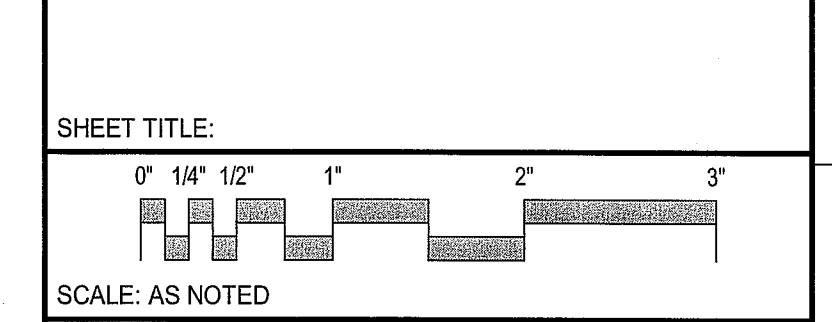
4-25-17

SMRT Architects and Engineers
144 Fore Street/P.O. Box 618
Portland, Maine 04104

ARCHITECTURE | ENGINEERING | PLANNING | INTERIORS | ENERGY **SMRT**

**MAINE MEDICAL PARTNERS
SURGICAL CARE RENOVATIONS**

PORTLAND, MAINE
LEVEL 4 FACILITY PLAN



PROJECT MANAGER: DJV PROJECT NO: 17027
A/E OF RECORD: DJV
JOB CAPTAIN: CAH
DRAWN BY: CAH/JCH
SMRT FILE: A-101-17027 SHEET NO. **A-101**

LEVEL 4 - FACILITY PLAN **A1**
1/8" = 1'-0"